

RL-7550-2

LOW DCR/ LOW PROFILE SMD INDUCTORS

DESCRIPTION

- Low Profile SMD Inductor

ENVIRONMENTAL DATA

- Storage temperature range: -55°C to +130°C
- Operating temperature range: -40°C to +130°C

PACKAGING INFORMATION

- Packaging information: pg. 490

FEATURES & APPLICATIONS

- Enclosed in a rugged case to provide optimum pick and place operations
- High inductance / high current ultra low profile inductor
- Low profile. Great for applications when space is at a premium
- Excellent as DC-DC converter used in notebook computers, smartphones, cell phones, step-up or step-down converters, and flash memory

Verify operation with sample in actual circuit. Order samples at www.rencousa.com.

MECHANICAL DIMENSIONS

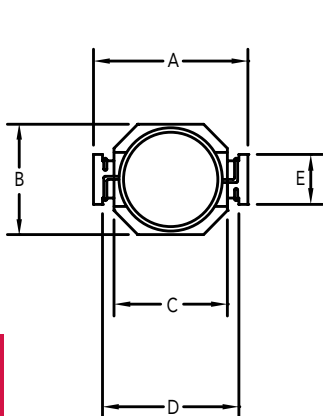
U.S. Standard (mm)

PART NUMBER	A (MAX.)	B (MAX.)	C ±0.012 (0.3)	D ±0.012 (0.3)	E ±0.008 (0.2)	F (MAX.)
RL-7550-2	0.29 (7.30)	0.22 (5.50)	0.20 (5.00)	0.25 (6.40)	0.08 (2.00)	0.12 (2.92)

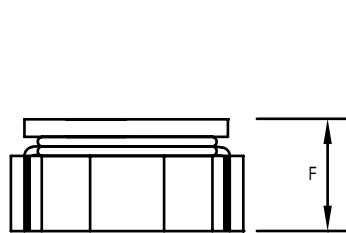
PART NUMBER	PART WEIGHT
RL-7550-2	0.2g (0.007oz)

G (REF.)	H (REF.)	I (REF.)
0.06 (1.60)	0.10 (2.50)	0.16 (4.00)

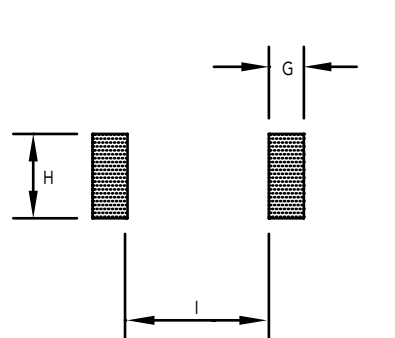
TOP VIEW



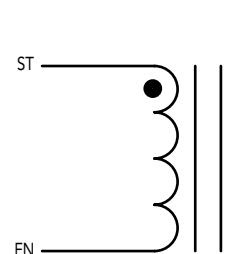
SIDE VIEW



RECOMMENDED LAND PATTERN



SCHEMATIC



RL-7550-2

Renco Part No. RL-7550-2	Inductance (μ H)	DCR Max. (Ohms)	Isat (A)	Irms (A)	SRF (MHz) Typ.
RL-7550-2-1R0M	1.0 \pm 20%	0.050	2.90	2.90	130.0
RL-7550-2-1R5M	1.5 \pm 20%	0.050	2.60	2.80	115.0
RL-7550-2-2R2M	2.2 \pm 20%	0.070	2.30	2.40	90.0
RL-7550-2-3R3M	3.3 \pm 20%	0.080	2.00	2.00	70.0
RL-7550-2-4R7M	4.7 \pm 20%	0.090	1.50	1.50	50.0
RL-7550-2-6R8M	6.8 \pm 20%	0.130	1.20	1.40	45.0
RL-7550-2-100M	10.0 \pm 20%	0.160	1.10	1.10	35.0
RL-7550-2-150M	15.0 \pm 20%	0.230	0.90	1.20	30.0
RL-7550-2-220M	22.0 \pm 20%	0.370	0.70	0.80	20.0
RL-7550-2-330M	33.0 \pm 20%	0.510	0.58	0.60	15.0
RL-7550-2-470M	47.0 \pm 20%	0.640	0.50	0.50	14.0
RL-7550-2-680M	68.0 \pm 20%	0.860	0.40	0.40	11.0
RL-7550-2-101M	100.0 \pm 20%	1.270	0.31	0.30	9.0
RL-7550-2-151M	150.0 \pm 20%	2.000	0.27	0.25	6.0
RL-7550-2-221M	220.0 \pm 20%	3.110	0.22	0.20	5.5

NOTES:

1. Isat - DC CURRENT THAT WILL CAUSE INDUCTANCE TO DROP BY 5%
2. Irms - CURRENT THAT CAUSES THE TEMPERATURE TO RISE APPROX. 40°C ABOVE AMBIENT OF 25°C
3. RESISTANT TO SOLDER HEAT: 260°C FOR 10 SECONDS
4. ELECTRICAL SPECIFICATIONS MEASURED AT 25°C
5. INDUCTANCE TESTED AT 100 kHz, 0.1 Vrms



RENCO ELECTRONICS INC.

595 International Place, Rockledge, FL 32955-4200 USA • www.rencousa.com • ISO 9001 Certified
Toll Free Engineering Hot Line: 800.645.5828 • P: 321.637.1000 • F: 321.637.1600

