

# High Pass Filter

## RHP-73+

50Ω 140 to 2000 MHz

### Maximum Ratings

Operating Temperature	-40°C to 85°C
Storage Temperature	-55°C to 100°C
RF Power Input	0.5W at 25°C

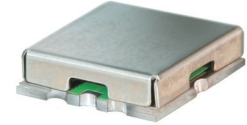
Permanent damage may occur if any of these limits are exceeded.

### Pin Connections

INPUT	2
OUTPUT	6
GROUND	1, 3, 4, 5, 7, 8

### Features

- low insertion loss, 0.3dB typ. @ passband
- high rejection
- shielded case
- aqueous washable



CASE STYLE: GP731

### +RoHS Compliant

The +Suffix identifies RoHS Compliance. See our web site for RoHS Compliance methodologies and qualifications



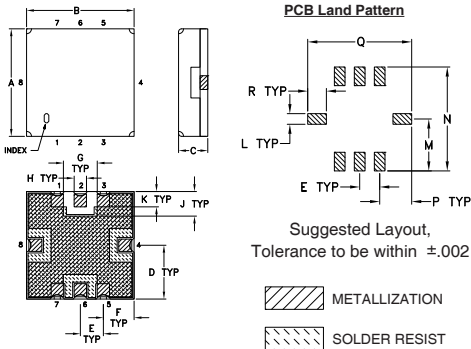
### Applications

- transmitters/receivers
- sub-harmonic rejection
- military communications

### High Pass Filter Electrical Specifications (T<sub>AMB</sub> = 25°C)

STOPBAND (MHz)		f <sub>co</sub> , MHz Nom.	PASSBAND (MHz)	VSWR (:1)	
(Loss > 40dB)	(Loss > 20dB)	(Loss 3dB)	(Loss < 1dB)	Stopband Typ.	Passband Typ.
DC - 42	DC - 55	73	140 - 2000	18	1.2

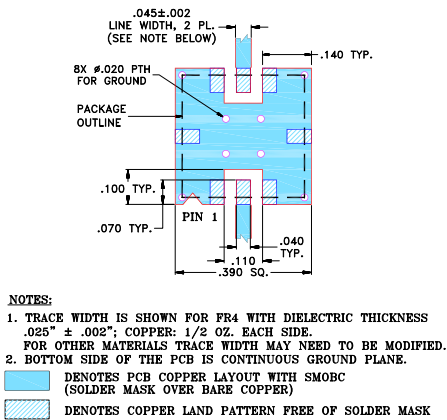
### Outline Drawing



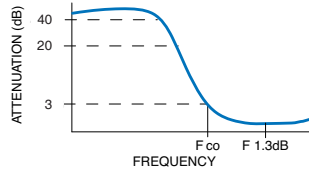
### Outline Dimensions (inch/mm)

A	B	C	D	E	F	G	H	J
.350	.350	.100	.175	.075	.100	.110	.040	.080
8.89	8.89	2.54	4.45	1.93	2.54	2.79	1.02	2.03
K	L	M	N	P	Q	R	wt.	
.050	.040	.195	.390	.120	.390	.070	grams	
1.27	1.02	4.95	9.91	3.05	9.91	1.78	0.25	

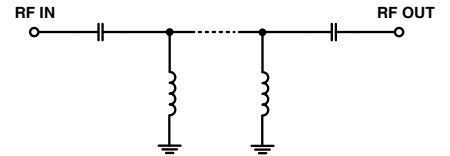
### Demo Board MCL P/N: TB-332 Suggested PCB Layout (PL-176)



### Typical Frequency Response

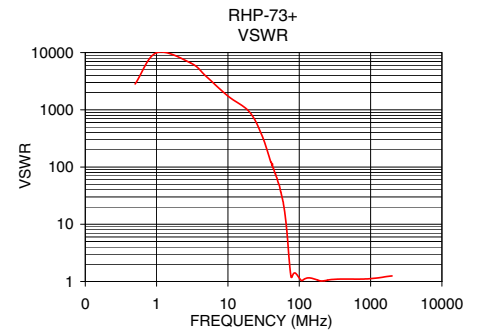
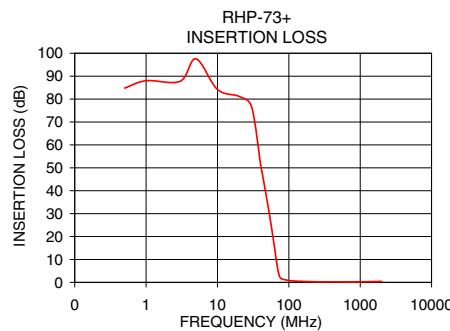


### Functional Schematic



### Typical Performance Data at 25°C

Frequency (MHz)	Insertion Loss (dB)	VSWR (:1)
0.5	84.79	2823.13
10.0	84.19	1737.18
20.0	81.19	921.27
30.0	76.77	356.09
42.0	48.28	114.28
55.0	27.25	36.72
62.0	16.65	17.55
69.0	6.80	4.89
73.0	3.19	2.06
85.0	1.27	1.41
110.0	0.65	1.04
140.0	0.47	1.16
250.0	0.24	1.06
750.0	0.22	1.10
500.0	0.21	1.10
1000.0	0.25	1.12
1400.0	0.31	1.18
2000.0	0.41	1.25



### Notes

- A. Performance and quality attributes and conditions not expressly stated in this specification document are intended to be excluded and do not form a part of this specification document.
- B. Electrical specifications and performance data contained in this specification document are based on Mini-Circuits' applicable established test performance criteria and measurement instructions.
- C. The parts covered by this specification document are subject to Mini-Circuits standard limited warranty and terms and conditions (collectively, "Standard Terms"); Purchasers of this part are entitled to the rights and benefits contained therein. For a full statement of the Standard Terms and the exclusive rights and remedies thereunder, please visit Mini-Circuits' website at [www.minicircuits.com/MCLStore/terms.jsp](http://www.minicircuits.com/MCLStore/terms.jsp)

