

Power Splitter/Combiner

ZB6PD-2+

6 Way 50Ω 800 to 2000 MHz



HT-Series
Tight Spot
SMA Wrench
From \$24.95

Maximum Ratings

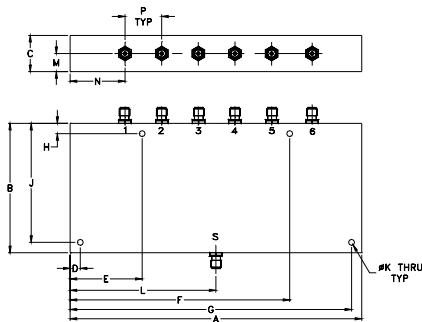
Operating Temperature	-55°C to 100°C
Storage Temperature	-55°C to 100°C
Power Input (as a splitter)	10W max.
Internal Dissipation	0.875W max.
DC Current	1.8A(300mA for each port)

Permanent damage may occur if any of these limits are exceeded.

Coaxial Connections

SUM PORT	S
PORT 1,2,3,4,5,6	1,2,3,4,5,6

Outline Drawing



Outline Dimensions (inch/mm)

A	B	C	D	E	F	G	H
7.06	3.13	.88	.250	1.750	5.310	6.810	.250
179.32	79.50	22.35	6.35	44.45	134.87	172.97	6.35

J	K	L	M	N	P	wt
2.875	.144	3.53	.44	1.31	.89	grams
73.03	3.66	89.66	11.18	33.27	22.61	800

Features

- wideband, 800 to 2000 MHz
- excellent VSWR, 1.1:1 typ. output
- high isolation, 27dB typ.
- rugged, shielded case
- up to 10W power input as splitter

Applications

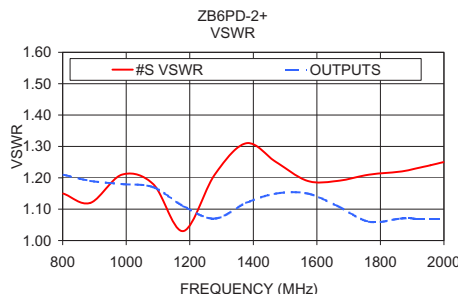
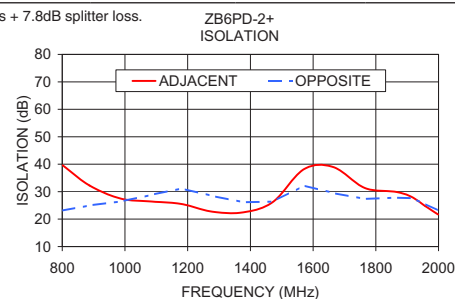
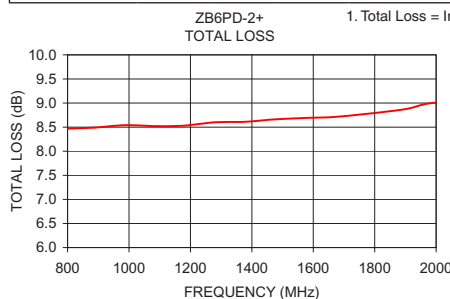
- cellular
- PCN
- instrumentation
- satellite distribution

Electrical Specifications

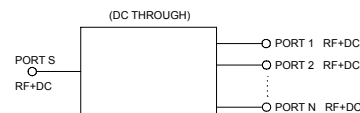
FREQ. RANGE (MHz)	ISOLATION (dB)		INSERTION LOSS (dB) ABOVE 7.8 dB		AMPLITUDE UNBALANCE (dB)	VSWR (:1)			
	Typ.	Min.	Typ.	Max.		S		OUT	
f _L -f _U					Max.	Typ.	Max.	Typ.	Max.
800-2000	27	17	0.7	1.7	0.7	1.2	1.6	1.13	1.3

Typical Performance Data

Frequency (MHz)	Total Loss ¹ (dB)	Amplitude Unbalance (dB)	Isolation (dB)		VSWR S	VSWR OUTPUTS
			Adjacent	Opposite		
			801.50	8.47		
887.00	8.49	0.31	32.26	24.98	1.12	1.19
986.50	8.54	0.33	27.48	26.44	1.21	1.18
1085.00	8.52	0.31	26.40	28.83	1.18	1.17
1179.50	8.53	0.31	25.53	31.14	1.03	1.11
1278.50	8.60	0.31	22.70	28.45	1.21	1.07
1377.50	8.61	0.30	22.46	26.13	1.31	1.12
1472.00	8.66	0.30	26.27	26.38	1.25	1.15
1571.00	8.69	0.27	38.21	32.21	1.19	1.15
1665.00	8.71	0.26	38.95	29.48	1.19	1.11
1764.50	8.77	0.33	31.36	27.36	1.21	1.06
1863.50	8.84	0.30	29.93	27.81	1.22	1.07
1913.00	8.89	0.32	28.17	27.62	1.23	1.07
1958.00	8.97	0.34	24.73	25.52	1.24	1.07
1998.50	9.01	0.35	21.70	23.15	1.25	1.07



electrical schematic



Notes

- Performance and quality attributes and conditions not expressly stated in this specification document are intended to be excluded and do not form a part of this specification document.
- Electrical specifications and performance data contained in this specification document are based on Mini-Circuit's applicable established test performance criteria and measurement instructions.
- The parts covered by this specification document are subject to Mini-Circuits standard limited warranty and terms and conditions (collectively, "Standard Terms"); Purchasers of this part are entitled to the rights and benefits contained therein. For a full statement of the Standard Terms and the exclusive rights and remedies thereunder, please visit Mini-Circuits' website at www.minicircuits.com/WCLStore/terms.jsp

