

FLORENTINA-HLD-O-90

~35° 15° oval beam. Variant with beam direction rotated 90°.

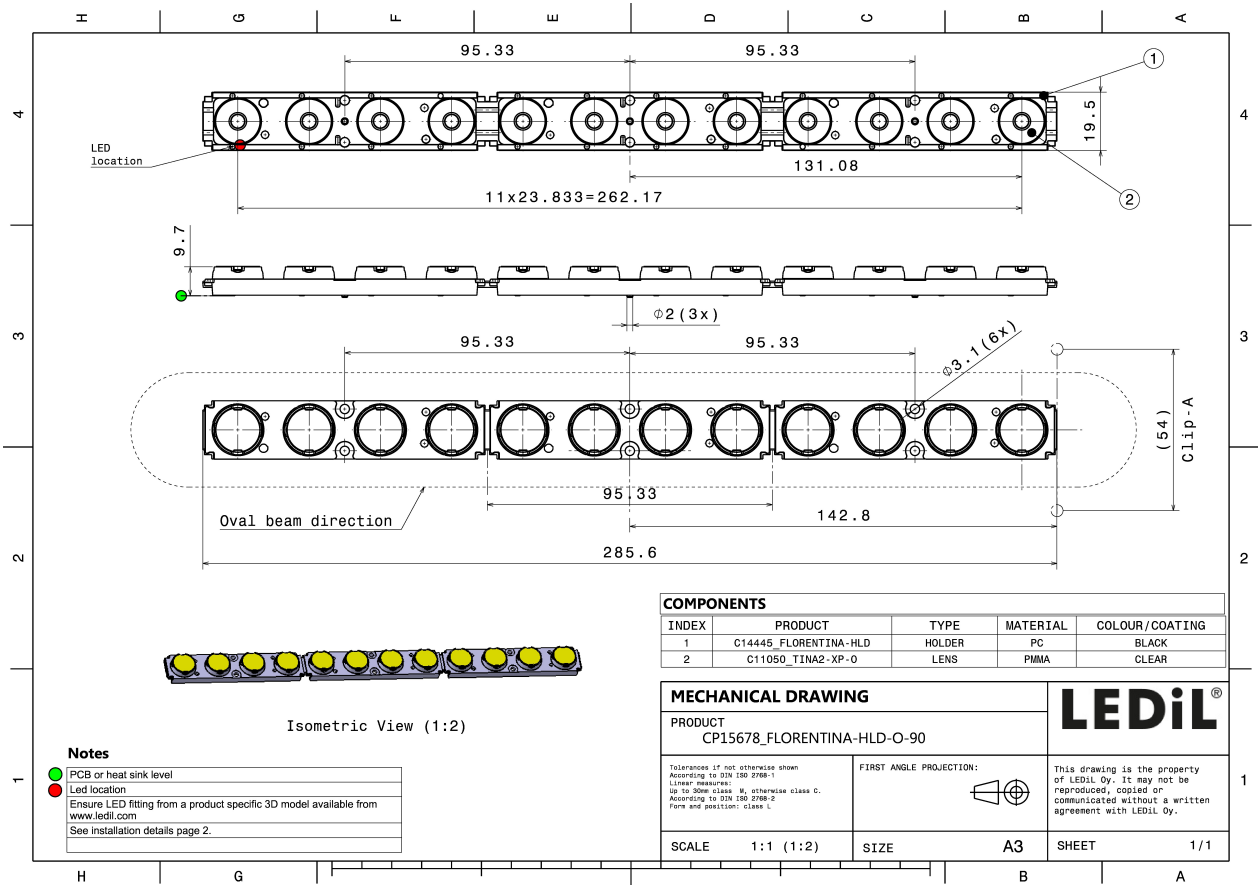
TECHNICAL SPECIFICATIONS:

Dimensions	285.6+19.5 mm
Height	9.7 mm
Fastening	screw
Colour	black
Box size	390 x 300 x 130 mm
Box weight	5.4 kg
Quantity in Box	160 pcs
ROHS compliant	yes ⓘ



MATERIAL SPECIFICATIONS:

Component	Type	Material	Colour
TINA2-XP-O	Lens	PMMA	clear
FLORENTINA-HLD	Holder	PC	black



PHOTOMETRIC DATA (MEASURED):

CREE

LED XP-E2
FWHM 35.0 + 12.0°
Efficiency 83 %
Peak intensity 5.050 cd/lm
Required components:
C14446_FLORENTINA-SHD

CREE

LED XP-G2
FWHM 34.0 + 15.0°
Efficiency 83 %
Peak intensity 4.200 cd/lm
Required components:
C14446_FLORENTINA-SHD

LG Innotek

LED H35C1 (LEMWA33)
FWHM 34.0 + 16.0°
Efficiency 80 %
Peak intensity 3.660 cd/lm
Required components:
C14446_FLORENTINA-SHD

LUMILEDS

LED LUXEON Rebel ES
FWHM 33.0 + 17.0°
Efficiency 79 %
Peak intensity 3.600 cd/lm
Required components:
C14446_FLORENTINA-SHD

PHOTOMETRIC DATA (MEASURED):

LUMILEDS

LED LUXEON Rebel Plus
FWHM 33.0 + 15.0°
Efficiency 81 %
Peak intensity 4.300 cd/lm
Required components:
C14446_FLORENTINA-SHD

LUMILEDS

LED LUXEON TX
FWHM 34.0 + 16.0°
Efficiency 81 %
Peak intensity 3.800 cd/lm
Required components:
C14446_FLORENTINA-SHD

LUMILEDS

LED LUXEON Z ES
FWHM 34.0 + 13.0°
Efficiency 82 %
Peak intensity 5.100 cd/lm
Required components:
C14446_FLORENTINA-SHD

NICHIA

LED NCSxx19B
FWHM 34.0 + 14.0°
Efficiency 79 %
Peak intensity 4.200 cd/lm
Required components:
C14446_FLORENTINA-SHD

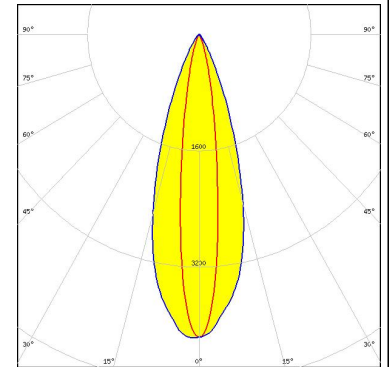
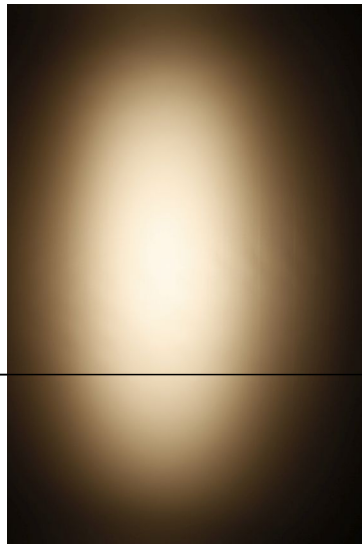
PHOTOMETRIC DATA (MEASURED):



LED NVSxx19B/NVSxx19C
FWHM 34.0 + 17.0°
Efficiency 78 %
Peak intensity 3.430 cd/lm
Required components:
C14446_FLORENTINA-SHD



LED Oslon Square EC
FWHM 15.0 + 34.0°
Efficiency 85 %
Peak intensity 4.200 cd/lm
Required components:
C14446_FLORENTINA-SHD



LED Oslon SSL 80
FWHM 33.0 + 15.0°
Efficiency 79 %
Peak intensity 4.080 cd/lm
Required components:
C14446_FLORENTINA-SHD



LED LH351B
FWHM 34.0 + 18.0°
Efficiency 94 %
Peak intensity 3.480 cd/lm
Required components:
C14446_FLORENTINA-SHD

PHOTOMETRIC DATA (MEASURED):

TOSHIBA

Leading Innovation >>>

LED TL1L4
FWHM 34.0 + 17.0°
Efficiency 79 %
Peak intensity 3.590 cd/lm
Required components:
C14446_FLORENTINA-SHD

GENERAL INFORMATION:

NOTE: The typical beam angle will be changed by different color, chip size and chip position tolerance. The typical total beam angle is the full angle measured where the luminous intensity is half of the peak value.

MATERIALS:

As part of our continuous research and improvement processes, and to ensure the best possible quality and availability of our products, LEDiL reserves the right to change material grades without notice.

PRODUCT DATA USER AGREEMENT AND DISCLAIMER:

The measured data in the provided downloadable LEDiL Product Datasheets and Mechanical 2D-Drawings is rounded and provided as reference for planning. LEDiL Oy's optical specifications have been verified by conducting performance testing of the products in accordance with the company's quality system. The reported data are averaged results of multiple measurements with typical variation. LEDiL Oy reserves the right to without prior notification make changes and improvements to its products.

LEDiL Oy assumes neither warranty, nor guarantee nor any other liability of any kind for the contents and correctness of the provided data. The provided data has been generated with highest diligence but the provided data may in reality not represent the complete possible variation range of all intrinsic parameters. Therefore, in certain cases a deviation from the provided data could occur.

LEDiL Oy reserves the right to undertake technical changes of its products without further notification which could lead to changes in the provided data. LEDiL Oy assumes no liability of any kind for the possible deviation from any provided data or any other damage resulting from the usage of the provided data.

The user agrees to this disclaimer and user agreement with the download or usage of the provided files.

LEDiL Oy

Joensuunkatu 13
FI-24240 SALO
Finland

LEDiL Inc.

228 West Page Street
Suite D
Sycamore IL 60178
USA

Local sales and technical support

[www.ledil.com/
where_to_buy](http://www.ledil.com/where_to_buy)

Shipping locations

Salo, Finland
Hong Kong, China

Distribution Partners

[www.ledil.com/
where_to_buy](http://www.ledil.com/where_to_buy)