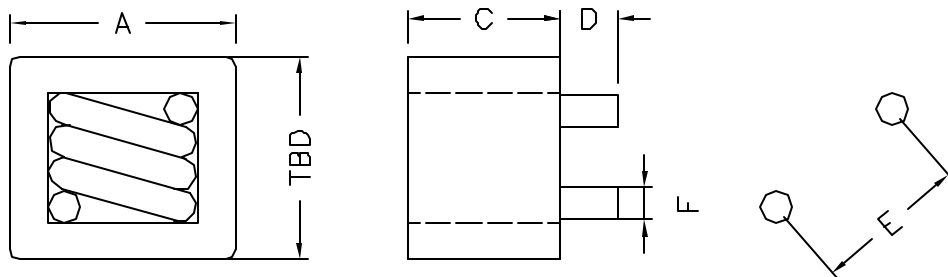


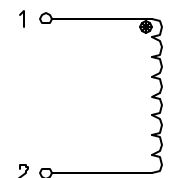
XFHCL12TH-XXXX SERIES INDUCTORS

- * L test parameters: 100KHz 1.0Vrms,0Adc
- * Ambient Temperature: 25°C
- * RoHS Compliant
- * Operating Temperature: -40 to +120°C
- * Irms (Amount of current to cause a 40°C Temp Rise)
- * Isat (Amount of current to cause a 20% drop in L)

Mechanical Dimensions:



Schematic:



Part Number	A	B	C	D	E	F
XFHCL12TH-R47M	11.7 Max	11.7 Max	9.7 Max	3.5±0.5	8.7±1	1.5±0.1
XFHCL12TH-0R6M	11.7 Max	11.7 Max	9.7 Max	3.5±0.5	8.7±1	1.5±0.1
XFHCL12TH-0R8M	11.7 Max	11.7 Max	9.7 Max	3.5±0.5	8.4±1	1.3±0.1
XFHCL12TH-1R0M	11.7 Max	11.7 Max	9.7 Max	3.5±0.5	8.4±1	1.3±0.1

Electrical Characteristics:

Part Number	L(0A) (uH±20%)	DCR (m) Max	L(rms) (uH±20%)	Irms (Amperes)	Isat (Amperes)
XFHCL12TH-R47M	0.47	0.70	0.41	34	50
XFHCL12TH-0R6M	0.60	0.70	0.56	33	50
XFHCL12TH-0R8M	0.80	1.50	0.73	32	45
XFHCL12TH-1R0M	1.00	1.50	0.92	30	45

XFHCL13TH-XXXX SERIES INDUCTORS

- * L test parameters: 100KHz 1.0Vrms,0Adc
- * Ambient Temperature: 25°C
- * RoHS Compliant
- * Operating Temperature: -40 to +120°C
- * Irms (Amount of current to cause a 40°C Temp Rise)
- * Isat (Amount of current to cause a 20% drop in L)

Mechanical Dimensions:

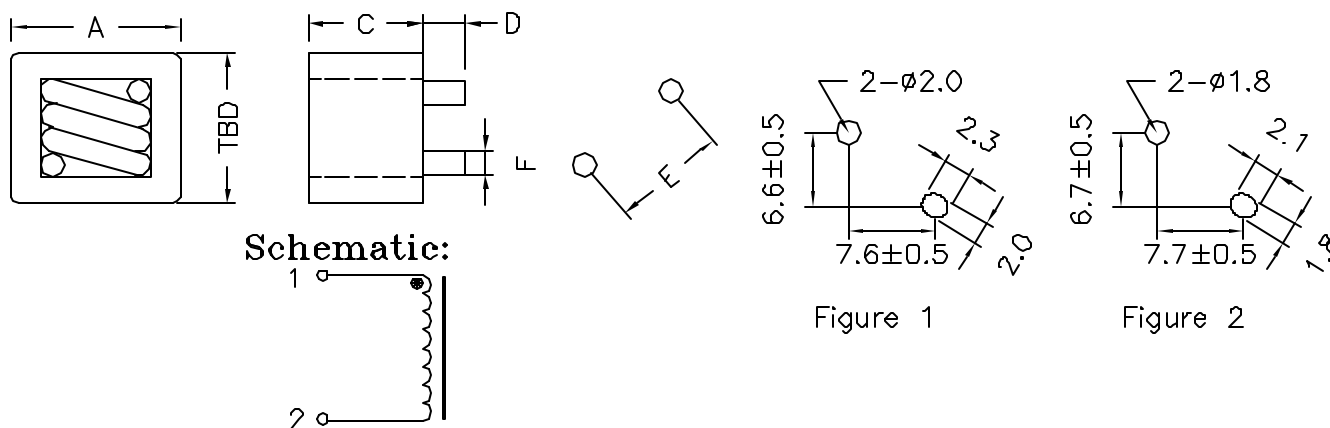


Figure 1

Figure 2

Part Number	A	B	C	D	E	F
XFHCL13TH-R47M	13.5 Max	12.5 Max	10.0 Max	3.5±0.5	10.0±1	1.7±0.1
XFHCL13TH-OR6M	13.5 Max	12.5 Max	10.0 Max	3.5±0.5	10.0±1	1.7±0.1
XFHCL13TH-OR8M	13.5 Max	12.5 Max	10.0 Max	3.5±0.5	10.0±1	1.7±0.1
XFHCL13TH-1R0M	13.5 Max	12.5 Max	10.0 Max	3.5±0.5	10.2±1	1.5±0.1

Electrical Characteristics:

Part Number	L(0A) (uH±20%)	DCR (m) Max	L(rms) (uH±20%)	Irms (Amperes)	Isat (Amperes)	Pin to Pin
XFHCL13TH-R47M	0.47	0.85	0.45	40	54	Figure 1
XFHCL13TH-OR6M	0.60	0.85	0.55	40	50	Figure 1
XFHCL13TH-OR8M	0.80	0.85	0.68	38	39	Figure 1
XFHCL13TH-1R0M	1.00	1.30	0.94	34	42	Figure 2