

15 BTOR 1

RCA connectors



RCA chassis socket acc. to JEITA RC-5231, upright version,  
for printed circuit boards

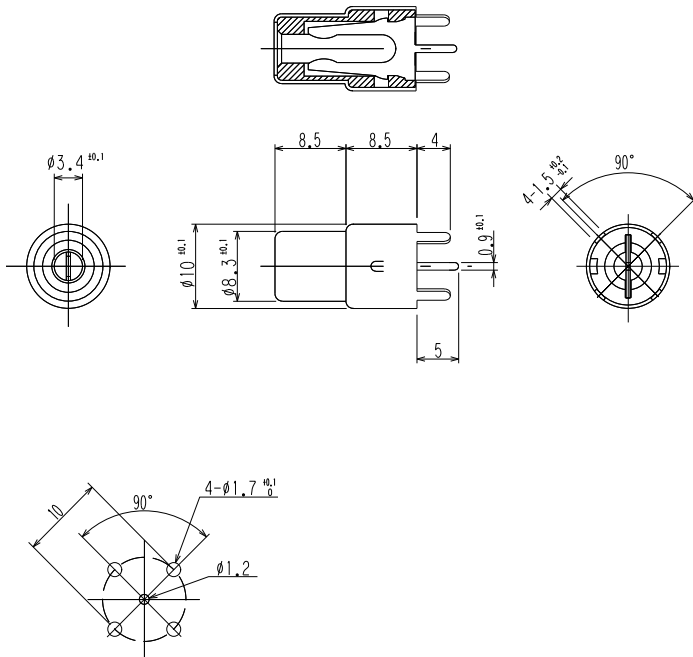
---

State: Active

---

15

BTOR 1



\*a printed circuit board layout

#### Environmental conditions

Temperature range -20 °C/+70 °C

#### Materials

Insulating body PBT GF, V-0 according to UL94  
Inner contact CuZn, pre-copper and tin-plated  
Outer contact CuZn, pre-copper and nickel-plated





#### Mechanical data

Mating cycles  $\geq 5000$   
Insertion force  $\leq 30$  N  
Withdrawal force 3–30 N

#### Electrical data (at $T_{amb}$ 20 °C)

Contact resistance  $\leq 50$  m $\Omega$   
Rated current 2 A  
Rated voltage 34 V AC/DC  
Rated impulse voltage 500 V AC/60 s  
Insulation resistance  $\geq 100$  M $\Omega$

#### Associated products

Counterparts  
 1573 01 V  STO 1  STO 11 V  
 STO 2  XSTO 1

15 BTOR 1

Designation	Pole Number	PU (Pieces)	MDQ (Pieces)
BTOR 1 GELB (yellow/jaune)	2	200	600
BTOR 1 ROT (red/rouge)	2	200	600
BTOR 1 SCHWARZ (black/noir)	2	200	600
BTOR 1 WEISS (white/blanc)	2	200	600

**Packaging:**  
in a tray