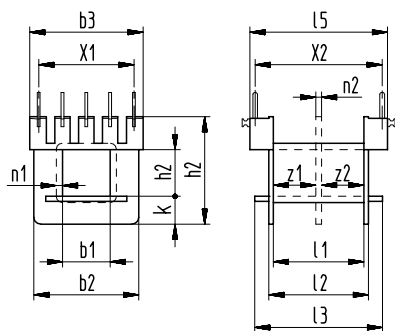


Sketch with main dimensions



Bobbins with pins group 1.  
Forms and dimensions when fitted see chapter accessories B (fitting) catalog page 285.

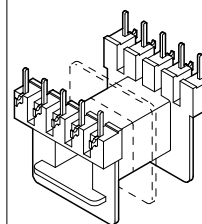
Please note: pin types 531-581/532-562/543-583, dimension X2 see table below.

pin types 564/574 and 565  
dimension X2 reduced by 2,5 mm

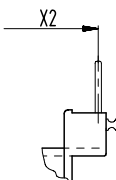
Without special note bobbin will be fitted with pin 561.

ST  
with pins

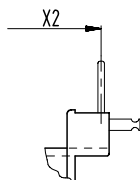
1



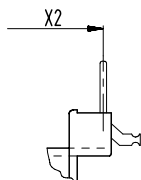
Typ: 531/ 541/ 551/ 561/ 571/ 581



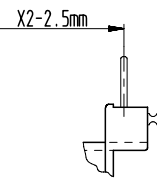
Typ: 532/ 542/ 562



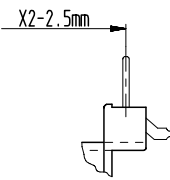
Typ: 543/ 553/ 563/ 573/ 583



Typ: 564/ 574



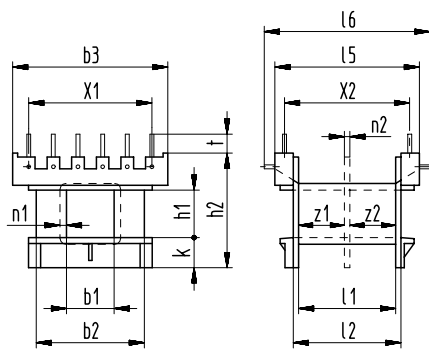
Typ: 565



Pin type 532 - 562, 543 - 583 and 565 are to be preferred for dip soldering the winding-side connections. Bobbins fitted with these terminals do not fit into the boxes.

z1	z2	b1	b2	b3	h1	h2	k	l1	l2	l3	l5	n1	n2	X1	X2	X3 ①	Type	Art. No.	
± 0,2	± 0,2	± 0,1	± 0,2	± 0,2	± 0,1	± 0,2	± 0,2	± 0,2	± 0,2	± 0,2	± 0,2	+0,2	± 0,1	± 0,2	± 0,2		EE 32/9,8/1 ST EE 32/9,8/2 ST	Wz 6450/1 ST Wz 6450/2 ST	2645 2952
9,7	9,7	9,8	22,1	24	9,8	22,6	6	20,4	21,7	27,2	29,7	0,6	1	4x5	27,5	2x5			
15,7	15,7	9,8	22,1	24	9,8	22,6	6	32,4	33,7	39,4	39,7	0,6	1	4x5	37,5	2x5	EE 32L/9,8/1 ST EE 32L/9,8/2 ST	Wz 6383/1 ST Wz 6383/2 ST	2406 2852

Sketch with main dimensions

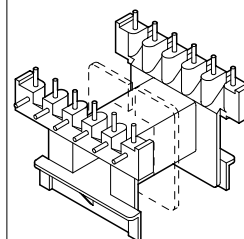


Standard: fully pinned, partial fitting on request.

t = standard pin length alternative pin length in brackets.

The grid distances X1/X2 can be used for metric and for inch measures.

ST  
with molded-in pins  $\varnothing$  0,8 mm



z1	z2	b1	b2	b3	h1	h2	k	l1	l2	l5	l6	n1	n2	t	X1	X2	X3 ①	Type	Art. No.	
± 0,2	± 0,2	± 0,1	± 0,2	± 0,2	± 0,1	± 0,2	± 0,2	± 0,2	± 0,2	± 0,3	± 0,3	+0,2	± 0,1	± 0,2	± 0,2	± 0,2		EE 32/9,8/1 ST	Wz 6694/1 ST	1802
-	-	9,8	22,3	32	9,8	23,6	6,2	20,3	21,8	29,5	35,8	0,7	-	3 (4,4)	5x5	25	2x6			
9,6	9,6	9,8	22,3	32	9,8	23,6	6,2	20,3	21,8	29,5	35,8	0,7	1,1	3 (4,4)	5x5	25	2x6	EE 32/9,8/2 ST with closed middle flange	Wz 6694/2 ST	1413
9,6	9,6	9,8	22,3	32	9,8	23,6	6,2	20,3	21,8	29,5	35,8	0,7	1,1	3 (4,4)	5x5	25	2x6	EE 32/9,8/2 ST with slotted middle flange	Wz 6694/2 ST ⑤	1367

① X3 = max. number of slots or terminals  
⑤ Slot width 1.7 mm for slotted middle flange.