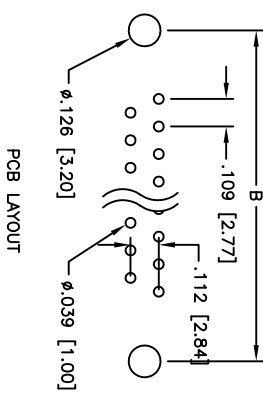
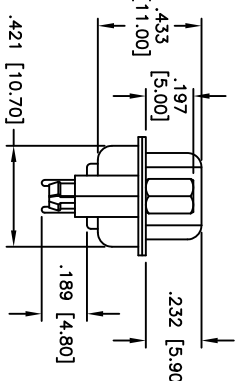
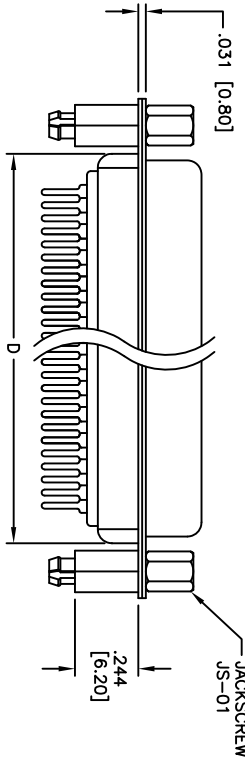
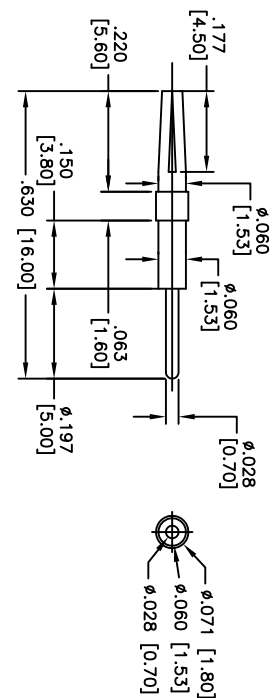
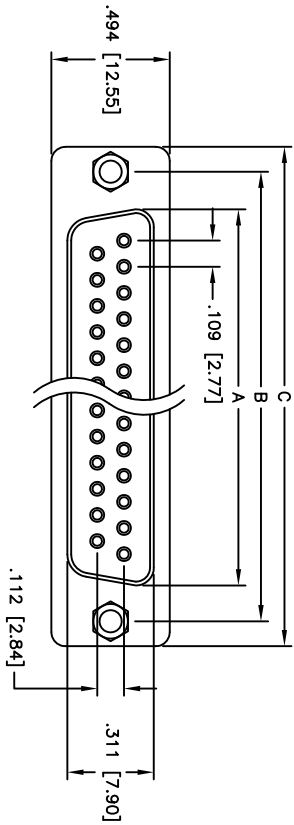


| Rev | AWO # | Description | Date    | Appr |
|-----|-------|-------------|---------|------|
| -   |       | RELEASED    | 3/31/06 |      |

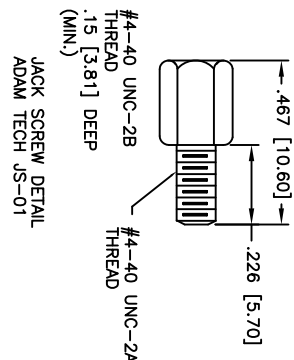
APPROVED: \_\_\_\_\_  
 DATE: \_\_\_\_\_ TITLE: \_\_\_\_\_



| Positions | DIMENSIONS    |               |               |               |
|-----------|---------------|---------------|---------------|---------------|
|           | A             | B             | C             | D             |
| 9         | .643 [16.33]  | .984 [24.99]  | 1.213 [30.81] | .756 [19.20]  |
| 15        | .971 [24.66]  | 1.312 [33.32] | 1.541 [39.14] | 1.091 [27.70] |
| 25        | 1.511 [38.38] | 1.852 [47.04] | 2.088 [53.04] | 1.618 [41.10] |
| 37        | 2.159 [54.84] | 2.500 [63.50] | 2.729 [69.32] | 2.256 [57.30] |
| 50        | 2.064 [52.43] | 2.406 [61.11] | 2.637 [67.00] | 2.169 [55.10] |

Unit: Inch / mm

SPECIFICATIONS:  
 Material: Insulator: PBT, glass reinforced, rated UL 94V-0  
 Insulator color: Black  
 Contacts: Phosphor Bronze  
 Shell: Steel, Tin plated  
 Hardware: Brass, Nickel plated  
 Plating: Gold flash over Nickel underplate overall



Electrical: Operating voltage: 250 VAC max  
 Current rating: 5 Amps max  
 Contact resistance: 20 mohms max  
 Insulation resistance: 5,000 Mohms min  
 Dielectric withstanding voltage: 1,000 VAC for 1 minute  
 Temperature Rating: Operating temperature: -65°C to +125°C  
 Environmental: Lead free, RoHS compliant  
 Recommended soldering temp: 235°C for 5 seconds



**ADAM TECH**

909 Rahway Avenue, Union, NJ 07083  
 Phone: 908-687-5000 Fax: 908-687-5710

| UNLESS OTHERWISE SPECIFIED ALL DIMENSIONS ARE INCHES [MM] TOLERANCES EXCEPT AS NOTED |        | INCHES                      |        | HOLDS    |  |
|--|--------|-----------------------------|--------|----------|--|
| .X   | ± .10  | ØX                          | ± .10  |          |  |
| .XX  | ± .020 | ØXX                         | ± .015 |          |  |
| .XXX   | ± .015 | ØXXX                        | ± .010 |          |  |
| APPROVALS  |        | DATE                        |        |          |  |
| DRAWN  | SS     | 3/31/06                     |        |          |  |
| CHECKED  |        |                             |        |          |  |
| APPROVED   |        |                             |        |          |  |
| TITLE  |        | D-SUB SOCKET, RIVETED #4-40 |        | PART NO. |  |
| JACKSCREWS & STANDOFFS W/BOARDLOCKS  |        | DXXX-ST-1BL-JS-MC           |        | REV.     |  |
| SCALE: NTS   |        | SHEET 1 OF 1                |        |          |  |