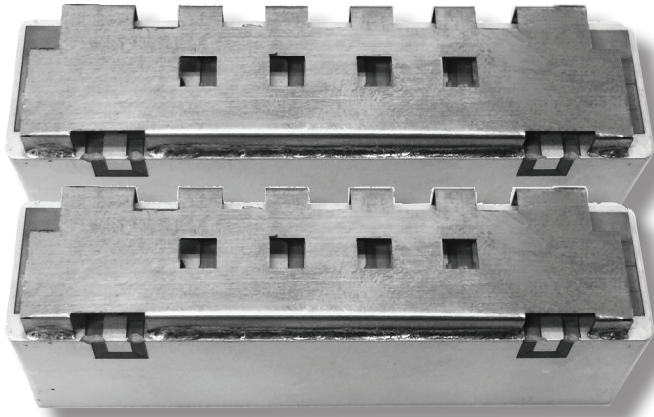


UMD: Universal-footprint Metro Cell Duplexers

Highest Power and Performance in a Pair of Monoblock Bandpass Filters



CTS Electronic Components introduces new high-reliability, surface-mounted ceramic filters that deliver performance comparable to Air-Cavity for next-generation size optimized system requirements.

Delivers the isolation and rejection required for 4-10W at Antenna metro cell basestations and remote radio head, as well as medium-power DAS systems including applications needing multi-band co-location, linearized PAs, carrier-aggregation, and “whole-band” systems.

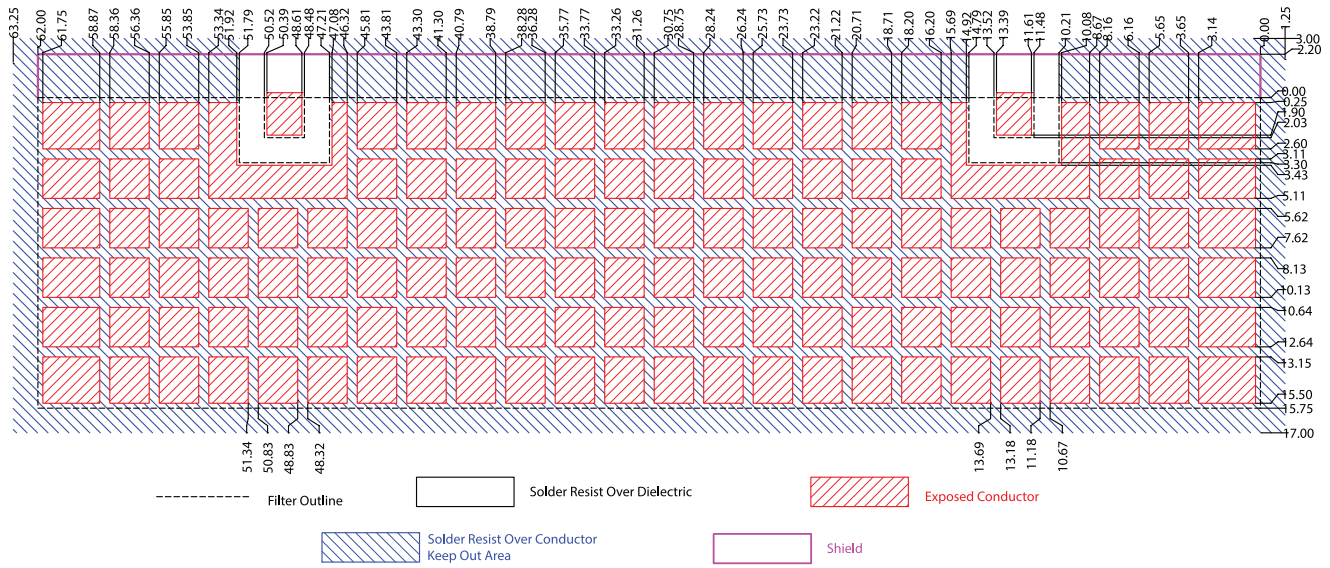
Product family offers versions for all of the major frequency bands <1.0GHz while sharing a common PCB layout enabling a platform solution. See the CMD product family for >1.7GHz.

Model	Freq Band#	DL Freq Range [MHz]	UL Freq Range [MHz]
UMD005A	5	869 - 894	824 - 849
UMD008A	8	925 - 960	880 - 915
UMD012A	12 17	728 - 746	698 - 716
UMD013A	13	746 - 756	777 - 787
UMD014A	14	758 - 768	788 - 798
UMD020A	20	791 - 821	832 - 862
UMD026A	5 26	859 - 894	814 - 849
UMD027A	27	851 - 869	806 - 824
UMD028A	28	758 - 803	703 - 748

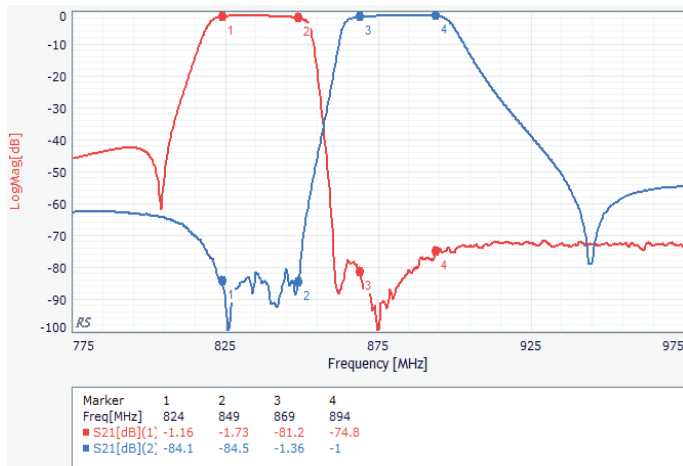
Insertion Loss (5MHz avg)	< 2.2 dB
Uplink Atten	82 dB typ 80 dB min
Downlink Atten	76 dB typ 74 dB min
Return Loss	> 12.0 dB
Input Power Rating	20.0W Avg 200W Peak
Size (L x W x H) (incl shield)	62.0 x <18.0 x 16.0mm (each BPF)
Max Weight	<48 g (each BPF)
Temperature Range	-40°C to +85°C



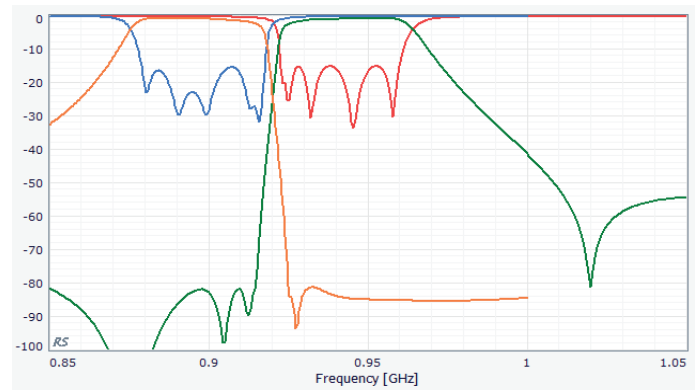
Universal PCB Footprint for all UMD frequency versions: (requires 2 such footprints for the pair of Bandpass Filters)



UMD005A (measured)



UMD008A (simulated)



UMD012A (simulated)

