



CSS0518P Series SMD WIRE WOUND POWER INDUCTORS (SHIELDED)

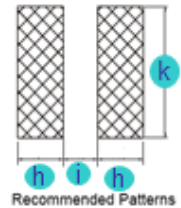
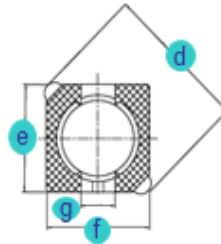
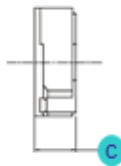
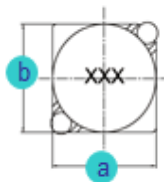
Rev. A

A. Electrical Specifications:

P/N	Marking	Inductance (μH)	Test Freq. (KHz)	DCR Max. (mΩ)	Rated Current (A)
CSS0518P-4R1N	4R1	4.1	10	57	1.95
CSS0518P-5R4N	5R4	5.4	10	76	1.60
CSS0518P-6R2N	6R2	6.2	10	96	1.40
CSS0518P-8R9N	8R9	8.9	10	116	1.25
CSS0518P-100N	100	10	10	124	1.20
CSS0518P-120N	120	12	10	153	1.10
CSS0518P-150N	150	15	10	196	0.97
CSS0518P-180N	180	18	10	210	0.85
CSS0518P-220N	220	22	10	290	0.80
CSS0518P-270N	270	27	10	330	0.75
CSS0518P-330N	330	33	10	385	0.65
CSS0518P-390N	390	39	10	520	0.57
CSS0518P-470N	470	47	10	595	0.54
CSS0518P-560N	560	56	10	665	0.50
CSS0518P-680N	680	68	10	840	0.43
CSS0518P-820N	820	82	10	978	0.41
CSS0518P-101N	101	100	10	1200	0.36

B. Dimensions: mm (Inch)

Series	a	b	c	d	e	f	g	h	i	k
CSS0518P	5.7 (0.224)	5.7 (0.224)	2.0 (0.049)	8.2 (0.323)	5.5 (0.217)	5.5 (0.217)	2.0 (0.079)	2.15 (0.085)	2.0 (0.079)	6.3 (0.248)
Tol.	±0.3 (0.012)	±0.3 (0.012)	Max.	Max.	Typ.	Typ.	Typ.	Typ.	Typ.	Typ.



C. General Information:

1. CSS0518P-xxx_, "CSS0518P" = P/N, "xxx" = Inductance, "_" = Tolerance.
2. Tolerance "_": N: ± 30%, M: ± 20%, L: ± 15%.
3. Operating temperature range: -30°C to +100°C (Including self-generated heat).
4. Storage temperature: -40°C to +85°C.
5. Inductance measured using the HP4284A and Chroma 1320 & 3302.
6. DCR measured using Chroma 16502 milliohm meter.
7. Inductance drop no more than 35% of initial value at rated current, temperature rise Δt < 40°C
8. Inductance and Current range: From 4.1μH (1.95A) to 100.0 μH (0.36A).
9. MSL: Level 1.

D. Applications:

1. Game Consoles
2. Set Top Boxes
3. Cables Modems
4. Computers
5. Mobile Communication Devices (Cell Phones, Radios, etc.)
6. PDA, LCD, DVD, BRP, HD.

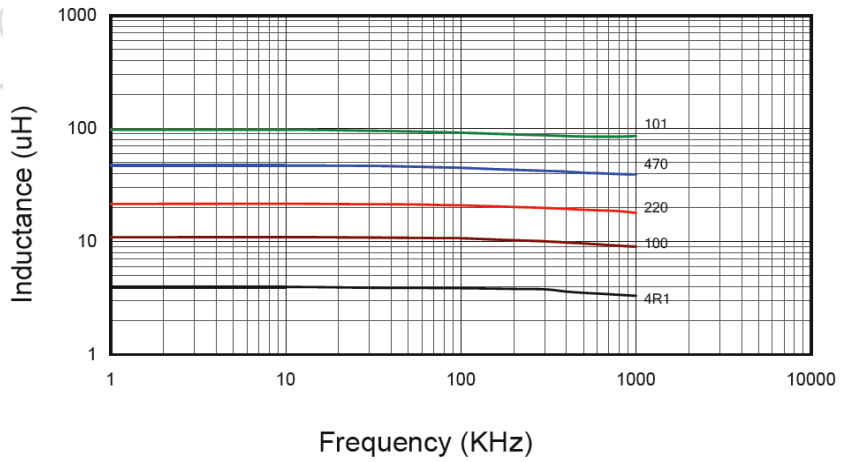


CSS0518P Series SMD WIRE WOUND POWER INDUCTORS (SHIELDED)

Rev. A

E. Characteristics Curve:

Inductance vs. Frequency



Inductance vs. DC Current

