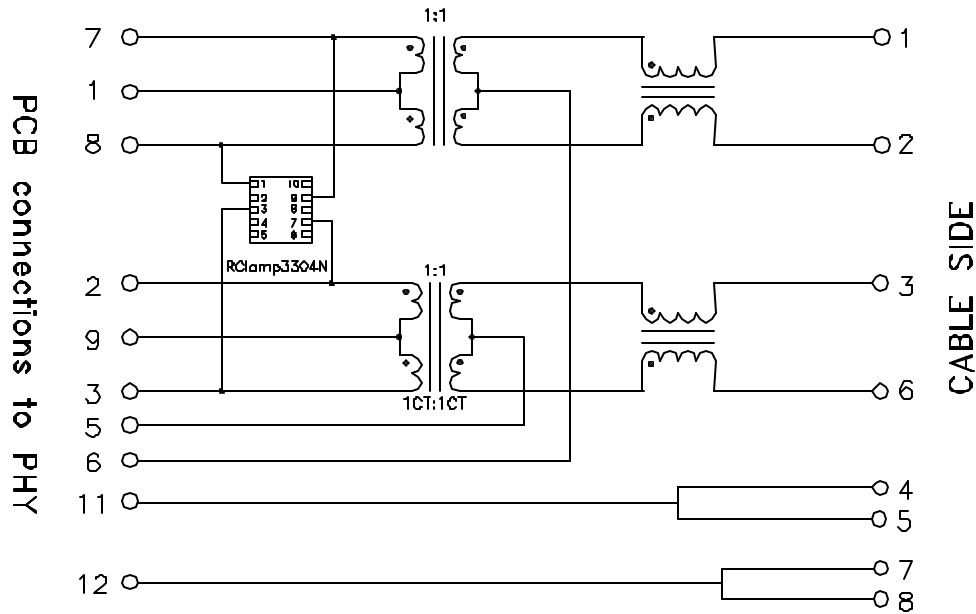


Schematic:



Electrical Specifications: @25°C

Isolation Voltage: 1500 VAc (Input to Output)
 Turns Ratio: TX 1CT:1CT ±3% RX 1CT:1CT ±3%
 Insertion Loss(TX/RX): -1.0dB Typ @1-100 MHz
 Return Loss: 1-10MHz 30MHz 60-80MHz
 -20dB -16dB -12dB (Typ)
 Cross Talk: 1-10MHz 30MHz 60-80MHz
 -40dB -35dB -30dB (Typ)
 Common Mode Rejection: 1-50MHz 50-130MHz
 -26dB -20dB(Typ)
 DC Current: 350mA
 Q: 18 Min @100KHz 0.1V

Notes:

1. Solderability: Leads shall meet MIL-STD-202G, Method 208H for solderability.
2. Flammability: UL94V-0
3. ASTM oxygen index: > 28%
4. Insulation System: Class F 155°C, UL file E151556
5. Operating Temperature Range: All listed parameters are to be within tolerance from -40°C to +85°C
6. Storage Temperature Range: -55°C to +125°C
7. Aqueous wash compatible
8. Electrical and mechanical specifications 100% tested
9. RoHS Compliant Component

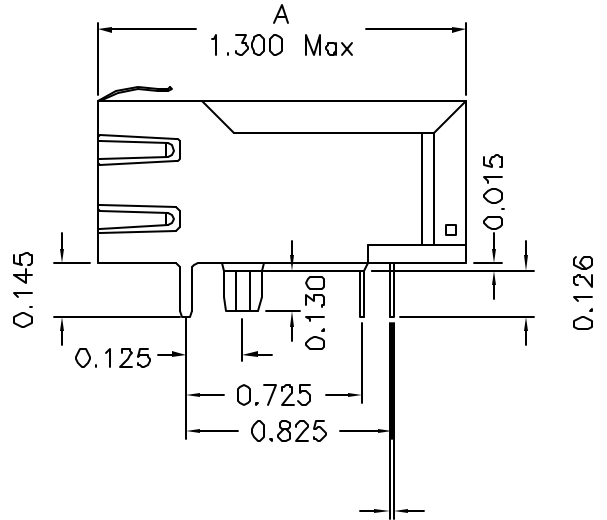
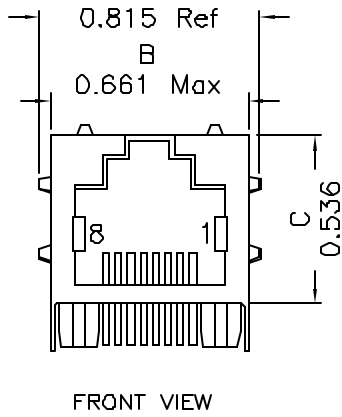
DOC. REV: A/3

XFMRs Inc. www.XFMRS.com		Title: SINGLE PORT COMBO	
UNLESS OTHERWISE SPECIFIED TOLERANCES: .xxx ±0.010 Dimensions in Inch		P/N: XFV0IPTVSB-CT1-4L	REV. A
DWN.	Xiany	Jul-11-09	
CHK.	YK Liao	Jul-11-09	
SHEET 1 OF 2	APP.	Joe Huff	Jul-11-09

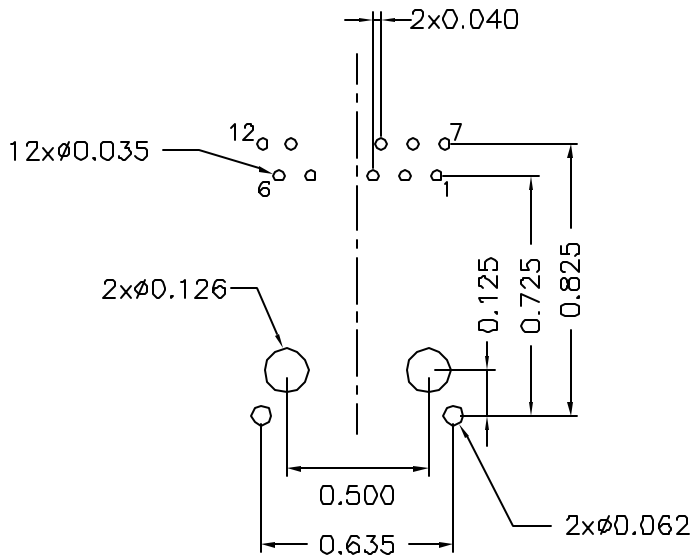
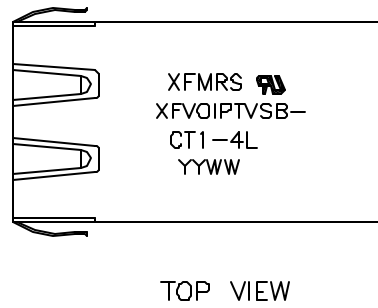
PROPRIETARY:

Document is the property of XFMRs Group & is not allowed to be duplicated without authorization.

Mechanical Dimensions:



SQ 0.018±0.005



DOC REV: A/3

PROPRIETARY:

Document is the property of XFMRS Group & is not allowed to be duplicated without authorization.

XFMRS Inc. www.XFMRS.com		Title: Mechanical Dimensions For TAB UP RJ45 COMBO	
UNLESS OTHERWISE SPECIFIED TOLERANCES: .xxx ±0.010 Dimensions in Inch		P/N: XFVOIPTVSB-CT1-4L	REV. A
DWN.	Xianyi	Jul-11-09	
CHK.	YK Liao	Jul-11-09	
APP.	Joe Huff	Jul-11-09	

SHEET 2 OF 2