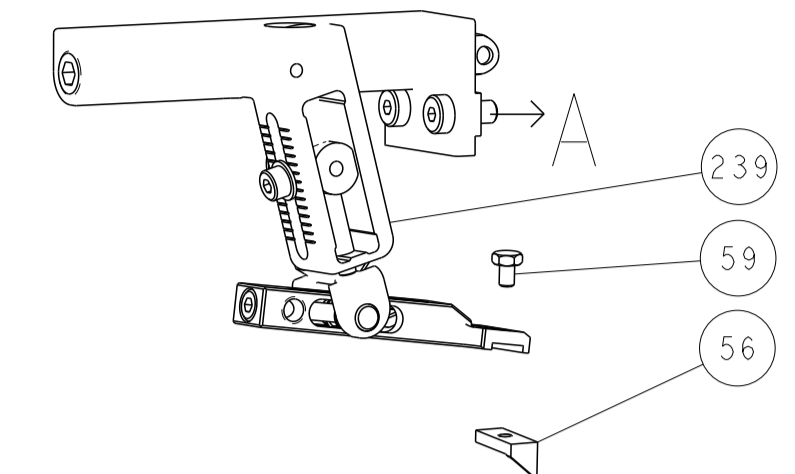
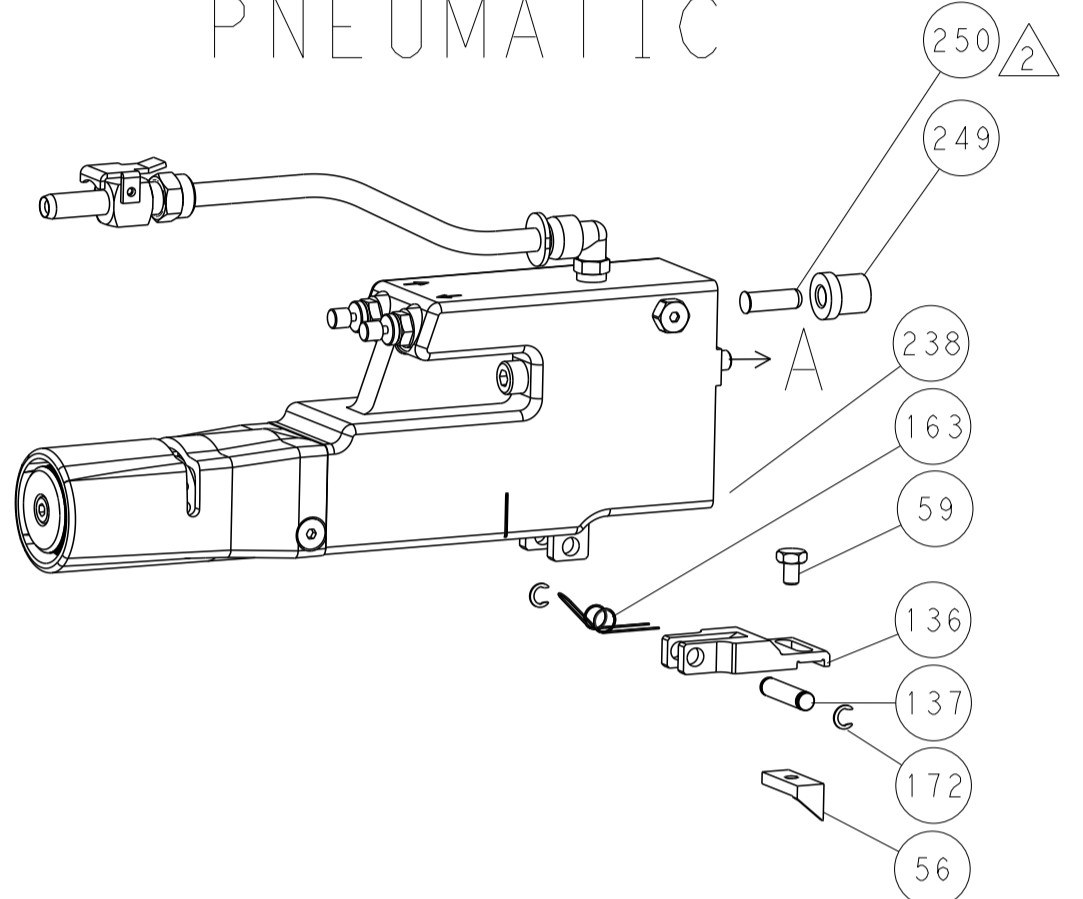


REVISIONS				
P	LTN	DESCRIPTION	DATE	APVD
-	SEE SHEET 1			

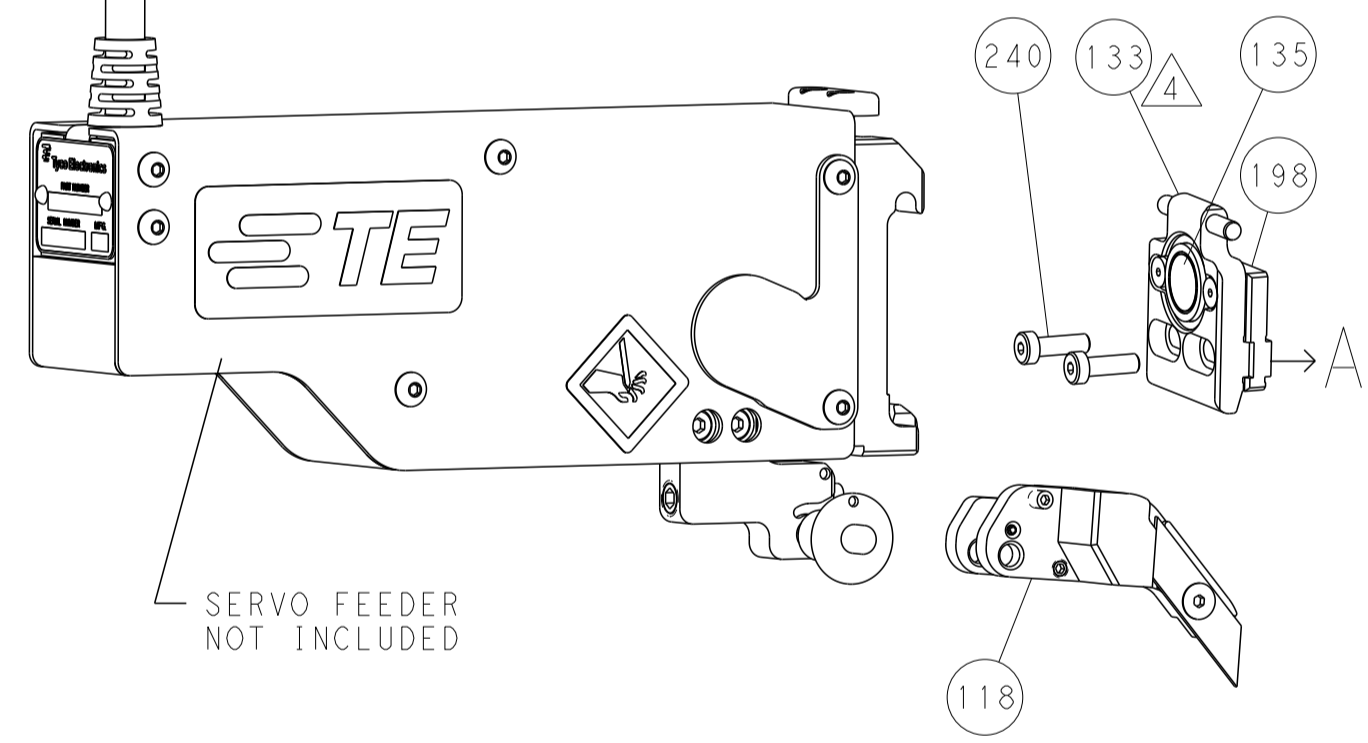
FEED TYPE MECHANICAL



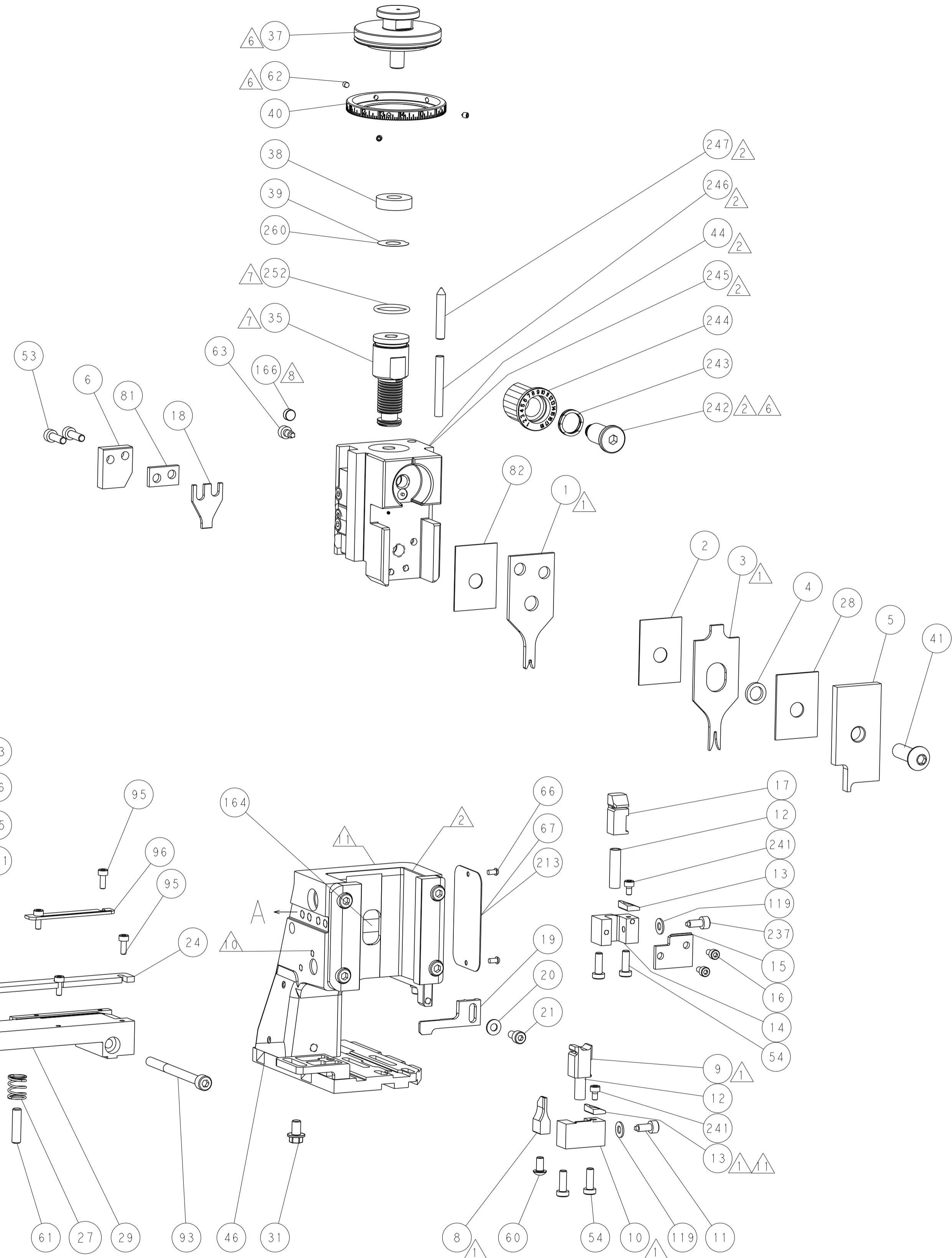
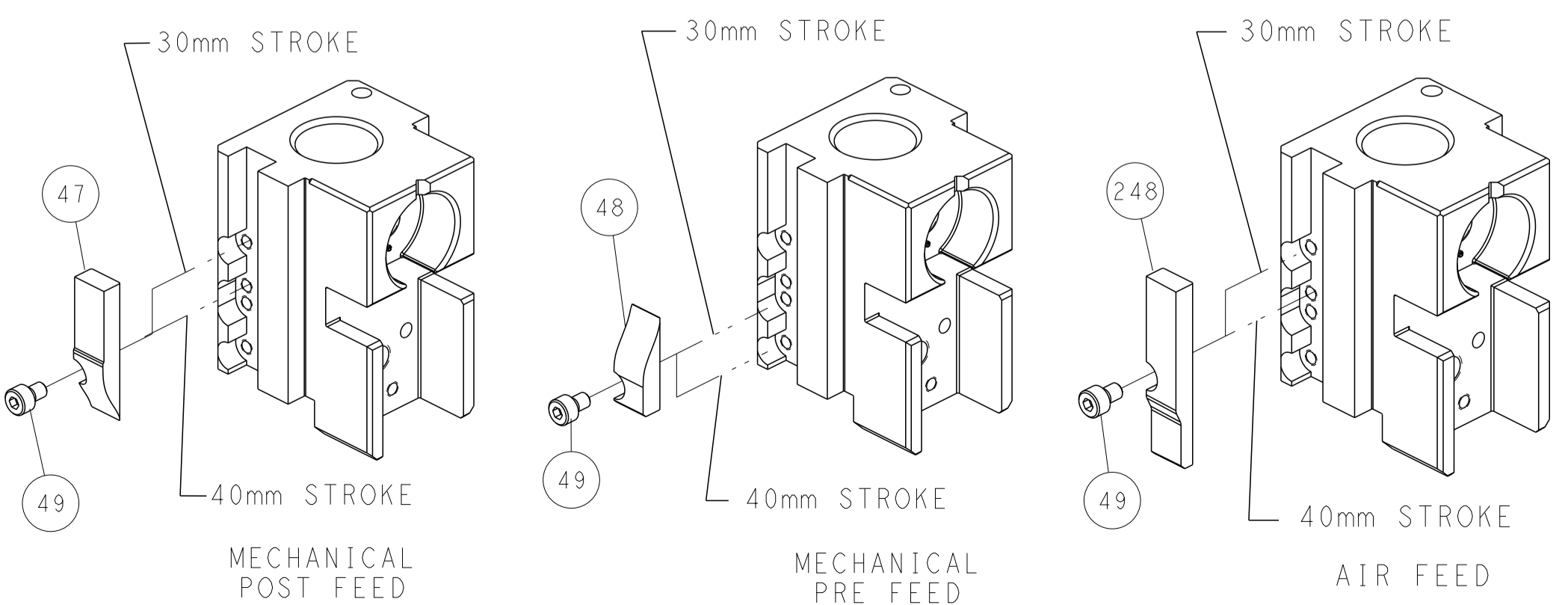
PNEUMATIC



SERVO LATCH PLATE



CAM POSITIONS



ATLANTIC VERSION
 Shown on sheets 1 of 4 & 2 of 4
 (Pacific version shown on sheets 3 of 4 & 4 of 4)

THIS DRAWING IS A CONTROLLED DOCUMENT.		OWN: C. MOYER 25AUG2011	TE Connectivity
DIMENSIONS: mm		CHK: T. ELBIN 25AUG2011	
TOLERANCES UNLESS OTHERWISE SPECIFIED:		APVD: T. ELBIN 25AUG2011	NAME: Ocean Side Feed Applicator
0 PLC ± 1 PLC ± 2 PLC ± 3 PLC ± 4 PLC ± ANGLES ±		PRODUCT SPEC	SIZE: A1
MATERIAL: -		APPLICATION SPEC	CAGE CODE: -
FINISH: -		WEIGHT: -	DRAWING NO: C=2151488
		CUSTOMER ACCESSIBLE PRODUCTION DRAWING	RESTRICTED TO: -
		SCALE: 1:2	SHEET: 2 of 4
			REV: B

Table with columns: PART NUMBER, REVISION, DESCRIPTION, FEED TYPE, CONVERT TO, PART NUMBERS REQUIRED. Includes a diagram of the Pacific Version Terminator Interface Adapter.

APPLICATOR DATA table with columns: CRIMP, SIZE, TYPE. Includes WIRE, INSUL, and APPLICATOR INSTRUCTIONS.

Terminal data and specification tables including TE CRIMP SPECIFICATION, WIRE STRIP LENGTH, INSULATION DIAMETER RANGE, and TERMINALS APPLIED.

Table with columns: WIRE SIZE, CRIMP HEIGHT mm [INCH], CRIMP HEIGHT REFERENCE SETTING. Includes diagrams for crimping.

- RECOMMENDED SPARE PARTS
GREASE BEARING SURFACES LIGHTLY
LUBRICATE DAILY PER THE APPLICATOR INSTRUCTION SHEET SUPPLIED WITH THE APPLICATOR.
APPLICATOR SPECIFIC DATA TO BE ENTERED INTO BLANK MEMORY CHIP AT ASSEMBLY. SEE BELOW FOR PART NUMBER:
MECHANICAL FEED WITH "SMART APPLICATOR" CONVERSION: 8-2151488-4
PNEUMATIC FEED WITH "SMART APPLICATOR" CONVERSION: 8-2151488-5
SERVO FEED WITH "FINE CRIMP HEIGHT ADJUST": 8-2151488-5
SERVO FEED WITH "NON-CRIMP HEIGHT ADJUST": 8-2151488-6
ADJUSTMENT OF THE STRIPPER MAY BE REQUIRED WHEN MOVING THE APPLICATOR BETWEEN BENCH AND LEADMAKER APPLICATIONS.
APPLY PART NUMBER 1-23419-5 LOCTITE TO THREADS OF ITEM 62. APPLY PART NUMBER 2-23419-6 LOCTITE TO THREADS OF ITEM 242.
GREASE THREADS, GROOVE AND O-RING ON ITEMS 139 & 152.
MAGNET MUST BE ORIENTED CORRECTLY IN ORDER TO PROPERLY ACTUATE THE COUNTER.
CRIMP HEIGHT REFERENCE SETTING WAS THE SETTING USED WHEN THE APPLICATOR WAS QUALIFIED AT THE FACTORY. ADJUSTMENT MAY BE NECESSARY WHEN RUNNING APPLICATOR IN THE FIELD.
SPARE FEED CAM STORAGE LOCATION REFER TO INSTRUCTION SHEET FOR ADDITIONAL INFORMATION.
TO CONVERT THE APPLICATOR TO A NON-CARRIER CUTTING STYLE, REMOVE ITEM 13 AND ATTACH TO THE LOCATION ON BACK SIDE OF THE HOUSING. REFER TO INSTRUCTION SHEET FOR ADDITIONAL INFORMATION.

*WARNING ON INSTALLATION, SET WIRE DISC, ITEM 40 TO LARGEST WIRE SIZE SETTING. USE OF SETTINGS BELOW MINIMUM REQUIRED CRIMP HEIGHT SETTING WILL CAUSE DAMAGE TO CRIMP TOOLING.

Table with columns: PART NO, DESCRIPTION, ITEM NO. Lists various parts like FINE ADJUST HEAD ASM, PUSH ROD, BUSHING, SPRING, etc.

PACIFIC VERSION Shown on sheets 3 of 4 & 4 of 4 (Atlantic version shown on sheets 1 of 4 & 2 of 4)

SET UP GAUGE 2119599-1

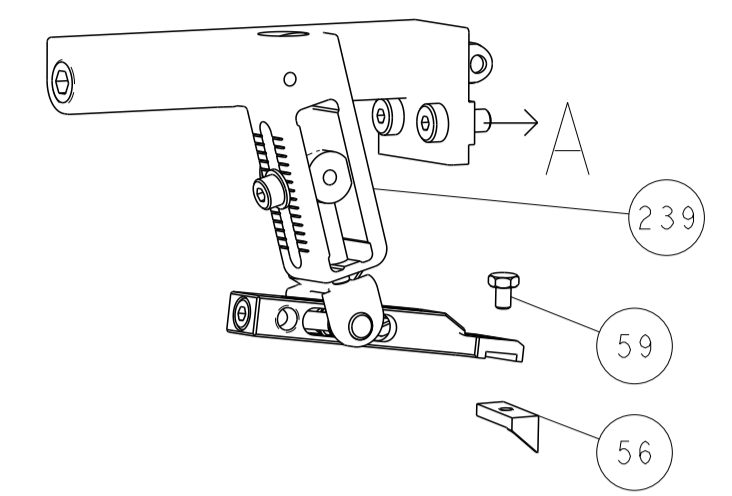
REVISIONS table with columns: P, LTM, DESCRIPTION, DATE, DWN, APVD.

Main parts list table with columns: PART NO, DESCRIPTION, ITEM NO. Lists numerous components like MECHANICAL FEED ASSEMBLY, AIR FEED MODULE, STOP, SHEAR, TAG IDENTIFICATION, etc.

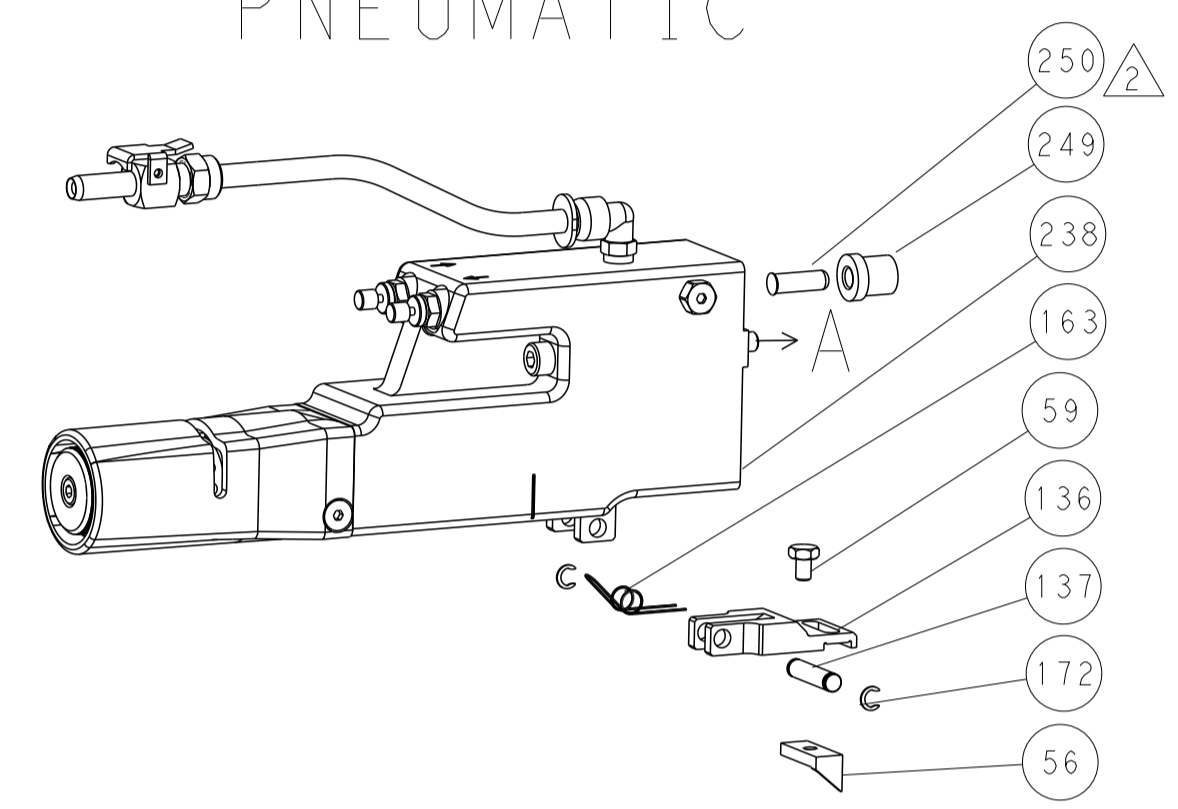
Technical drawing header including dimensions, tolerances, materials, and a title block with the STE logo and product name 'Ocean Side Feed Applicator'.

REVISIONS				
P	LTN	DESCRIPTION	DATE	APVD
-	-	SEE SHEET 1	-	-

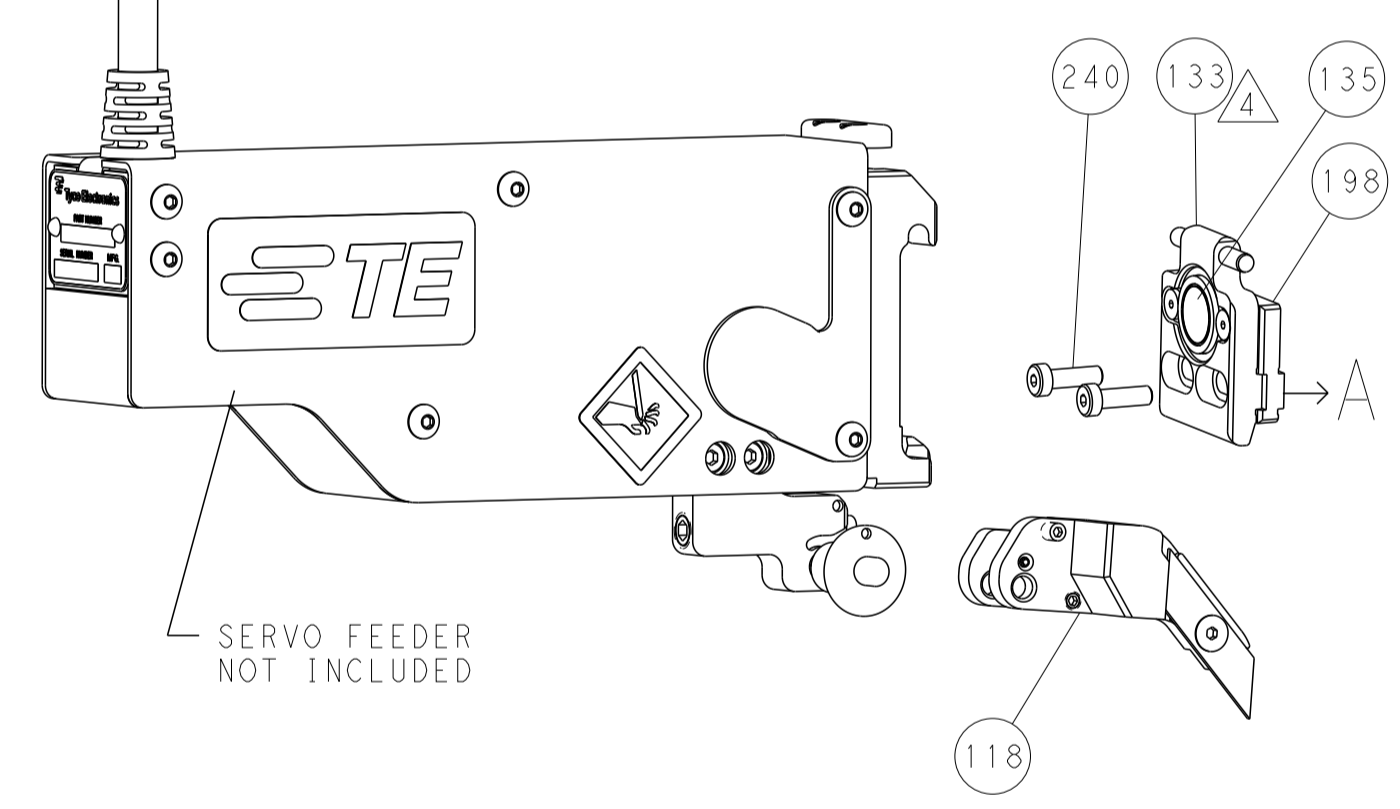
FEED TYPE MECHANICAL



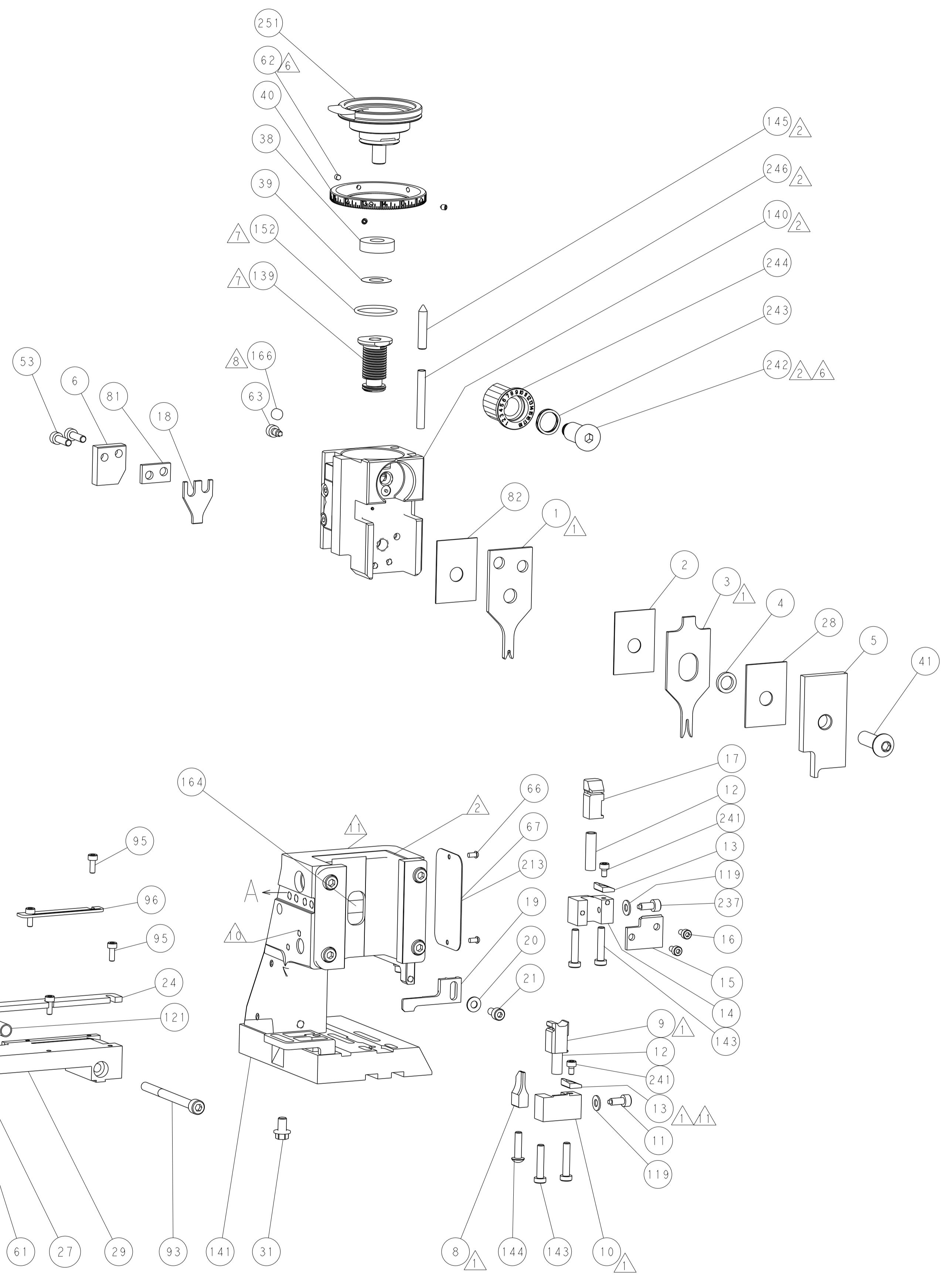
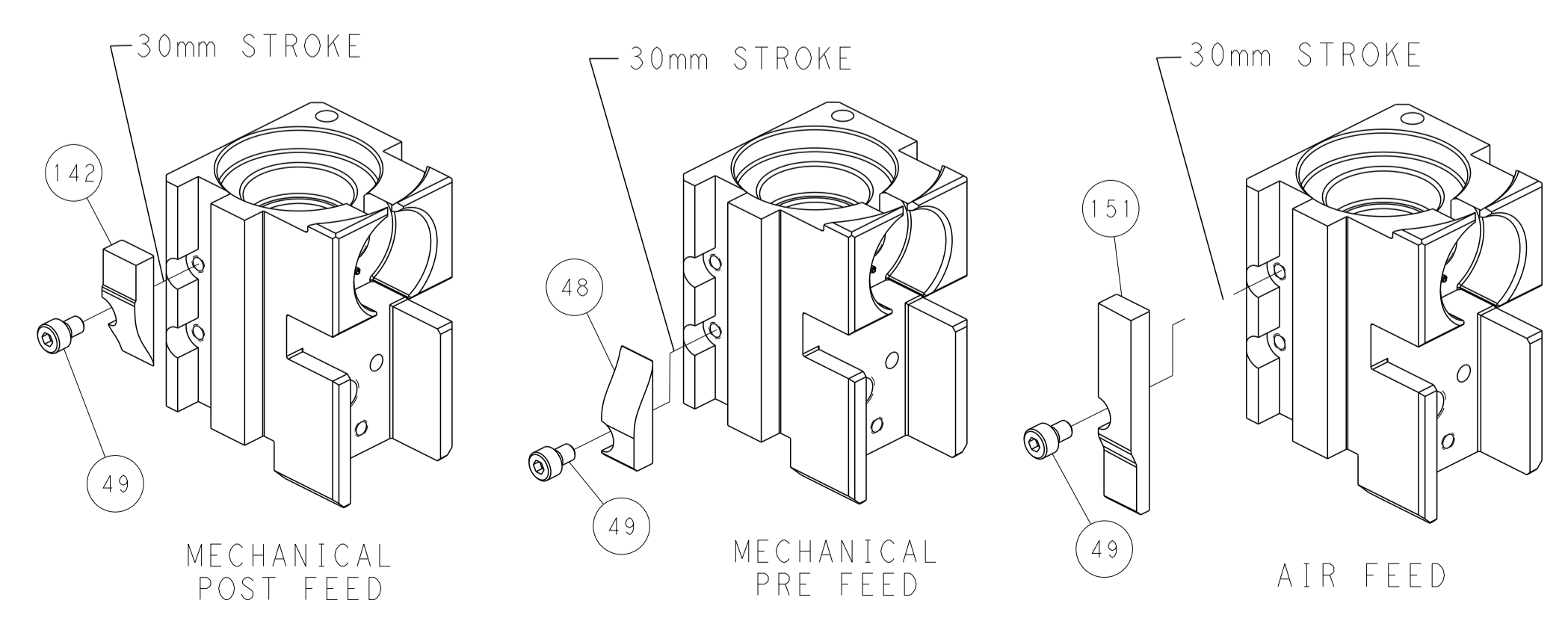
PNEUMATIC



SERVO LATCH PLATE



CAM POSITIONS



PACIFIC VERSION
 Shown on sheets 3 of 4 & 4 of 4
 (Atlantic version shown on sheets 1 of 4 & 2 of 4)

THIS DRAWING IS A CONTROLLED DOCUMENT.		OWN: C. MOYER 25AUG2011	STE TE Connectivity
DIMENSIONS: mm		CHK: T. ELBIN 25AUG2011	
TOLERANCES UNLESS OTHERWISE SPECIFIED:		APVD: T. ELBIN 25AUG2011	NAME: Ocean Side Feed Applicator
0 PLC ±		PRODUCT SPEC	SIZE: A1
1 PLC ±		APPLICATION SPEC	CAGE CODE: -
2 PLC ±		WEIGHT	DRAWING NO: C=2151488
3 PLC ±		CUSTOMER ACCESSIBLE PRODUCTION DRAWING	SCALE: 1:2
4 PLC ±		RESTRICTED TO	SHEET 4 OF 4
ANGLES FINISH		REV: B	