



CSS127P Series SMD WIRE WOUND POWER INDUCTORS (SHIELDED)

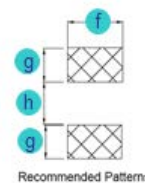
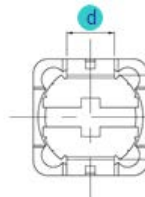
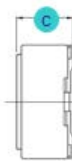
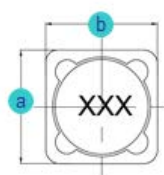
Rev. A

A. Electrical Specifications:

P/N	Marking	Inductance (μH)	Test Freq. (KHz)	DCR Max. (Ω)	Rated Current (A)
CSS127P-1R2N	1R2	1.2+40%,-20%	100	0.0070	9.80
CSS127P-2R4N	2R4	2.4+40%,-20%	100	0.0115	8.00
CSS127P-3R5N	3R5	3.5+40%,-20%	100	0.0135	7.50
CSS127P-4R7N	4R7	4.7+40%,-20%	100	0.0158	6.80
CSS127P-6R1N	6R1	6.1+40%,-20%	100	0.0176	6.60
CSS127P-7R6N	7R6	7.6+40%,-20%	100	0.0200	5.90
CSS127P-100M	100	10 ± 20%	1	0.0216	5.40
CSS127P-120M	120	12 ± 20%	1	0.0243	4.90
CSS127P-150M	150	15 ± 20%	1	0.0270	4.50
CSS127P-180M	180	18 ± 20%	1	0.0392	3.90
CSS127P-220M	220	22 ± 20%	1	0.0432	3.60
CSS127P-270M	270	27 ± 20%	1	0.0459	3.40
CSS127P-330M	330	33 ± 20%	1	0.0648	3.00
CSS127P-390M	390	39 ± 20%	1	0.0729	2.75
CSS127P-470M	470	47 ± 20%	1	0.1000	2.50
CSS127P-560M	560	56 ± 20%	1	0.110	2.35
CSS127P-680M	680	68 ± 20%	1	0.140	2.10
CSS127P-820M	820	82 ± 20%	1	0.160	1.95
CSS127P-101M	101	100 ± 20%	1	0.220	1.70
CSS127P-121M	121	120 ± 20%	1	0.250	1.60
CSS127P-151M	151	150 ± 20%	1	0.280	1.42
CSS127P-181M	181	180 ± 20%	1	0.350	1.30
CSS127P-221M	221	220 ± 20%	1	0.390	1.16
CSS127P-271M	271	270 ± 20%	1	0.560	1.06
CSS127P-331M	331	330 ± 20%	1	0.640	0.95
CSS127P-391M	391	390 ± 20%	1	0.700	0.88
CSS127P-471M	471	470 ± 20%	1	0.980	0.79
CSS127P-561M	561	560 ± 20%	1	1.070	0.73
CSS127P-681M	681	680 ± 20%	1	1.460	0.67
CSS127P-821M	821	820 ± 20%	1	1.640	0.60
CSS127P-102M	102	1000 ± 20%	1	1.820	0.55

B. Dimensions: mm (Inch)

Series	a	b	c	d	e	f	g	h
CSS127P	12.0 (0.472)	12.0 (0.472)	8.0 (0.315)	5.0 (0.197)	8.4 (0.331)	5.4 (0.213)	2.8 (0.110)	7.0 (0.276)
Tol.	±0.3 (0.012)	±0.3 (0.012)	Max.	Typ.	Typ.	Typ.	Typ.	Typ.



C. General Information:

- CSS127P-xxx_, "CSS127P" = P/N, "xxx" = Inductance, "_" = Tolerance.
- Tolerance "_": N = ± 30%, M = ± 20%, L = ± 15%.
- Operating temperature range: -30°C to +100°C (Including self-heating).
- Storage temperature: -40°C to +85°C.
- Inductance measured using the HP4284A and Chroma1320 & 3302.
- DCR measured using Chroma 16502 milliohm meter.
- Inductance drop no more than 25% of initial value at rated current, temperature rise $\Delta t < 40^\circ\text{C}$
- Inductance and Current range: From 1.2μH (9.80A) to 1000.0 μH (0.55A).
- MSL: Level 1.



CSS127P Series SMD WIRE WOUND POWER INDUCTORS (SHIELDED)

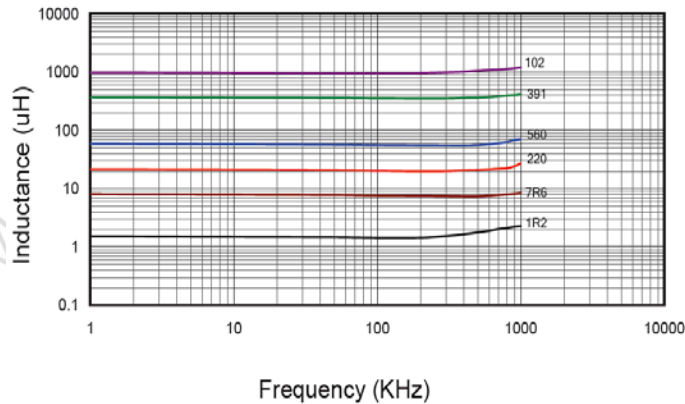
Rev. A

D. Applications:

1. Game Consoles
2. Set Top Boxes
3. Cables Modems
4. Computers
5. Mobile Communication Devices (Radios, etc.)
6. PDA, LCD, DVD, BRP, HD.

E. Characteristics Curve:

Inductance vs. Frequency



Inductance vs. DC Current

