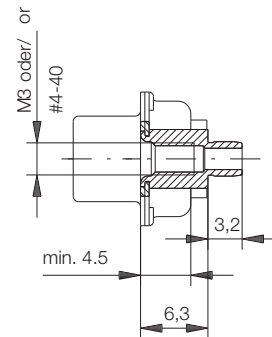
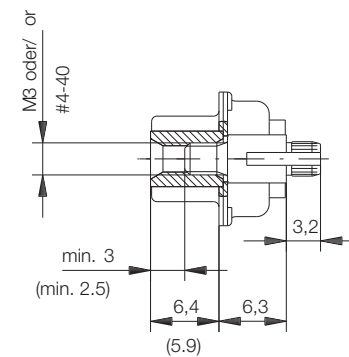


Schnitt A-A / cross section A-A

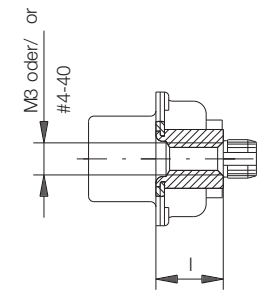
Einpressbolzen
press-fit bolt :



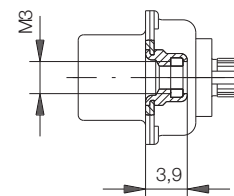
Einpressbolzen / Gewindehülse
press-fit bolt / threaded sleeve :



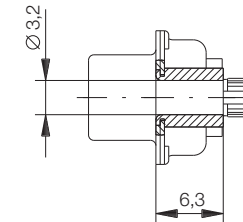
Nietmutter / riveted nut :
l = 3,7/5,6/6,0/6,3



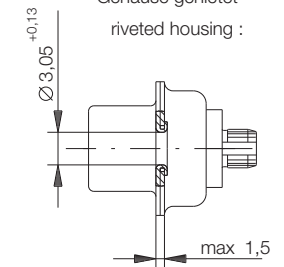
Nietmutter mit Klemmteil
clamping thread :



Abstandshülse / standoff :



Gehäuse genietet
riveted housing :



Ident-Nr. / Part No. :	Refer to table on page 2
Polzahl / No. of contacts :	Refer to table on page 2
Anschlußart / Terminal Type :	Pressfit
Anschlußlänge / Terminal Length :	6.3 mm
Bauart / Type :	8W8
Anforderungsstufe / Class :	201=0.8µm (30 µin) Au CONTACT, GOLD/LEAD TERMINAL
Aufdruck / Logo :	ERNI
Zubehör / Accessory :	Refer to table on page 2
Sonderausführung / Special :	Refer to table on page 2

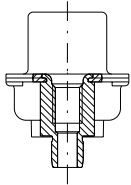
Leiterplattenbohrbild 144060 / Board hole pattern 144060
 Schichtaufbau im metallisierten Loch / metal plating of plated-through hole
 für Einpresskontakt Zeichnung 114110 / for press-fit contact drawing 114110
 für Einpressbolzen Zeichnung 114109 / for press-fit bolt drawing 114109

Information:	Tolerances	 All Dimensions in mm	Scale	2:1
	All rights reserved. Only for information. To insure that this is the latest version of this drawing, please contact one of the ERNI companies before using.		Designation TMC-S 8W8-EP36-6,3-8 TMC-S 8W8-EP36-6,3-8	
Subject to modification without prior notice. Drawing will not be updated.		 www.ERNI.com	054991	
Index	Date		M:00022980.SZN	TMCS

Ordering Information

D-Sub Connector High Power Pressfit Vertical Female Assembly Height 6.3mm

Number of Pins **8W8**

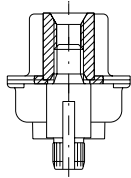


Accessory Termination Side: Pressfit bolt M3

134462

Accessory Termination Side: Pressfit bolt #4-40

134463



Accessory Mating Side: Threaded sleeve M3 Accessory Termination Side: Pressfit bolt

134516

Accessory Mating Side: Threaded sleeve #4-40 Accessory Termination Side: Pressfit bolt

134517

Ordering Information press-in tools

Number of Pins	Upper Tool with Quick Change Device	Lower Tool
----------------	-------------------------------------	------------

8W8	220224	220147
-----	--------	--------