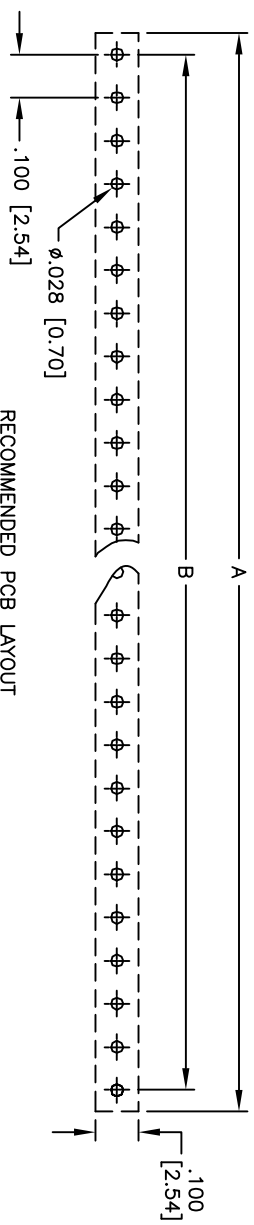
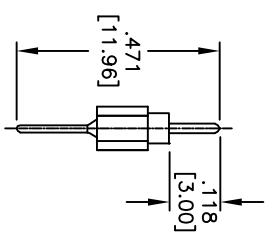
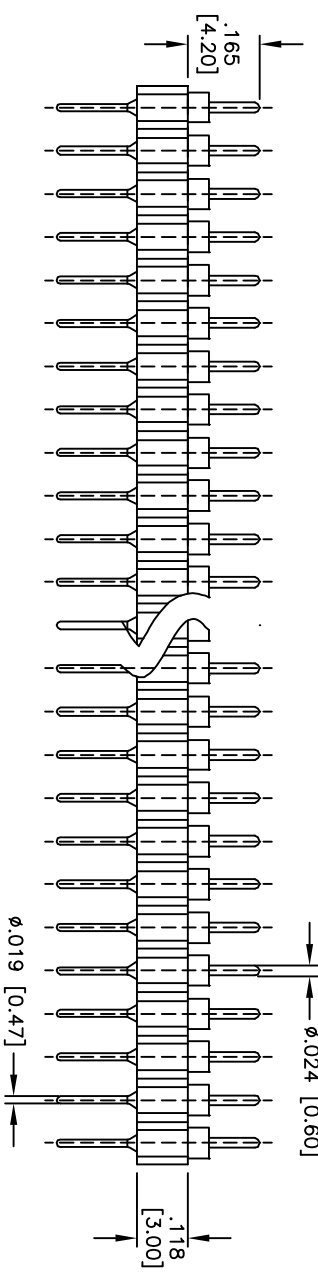
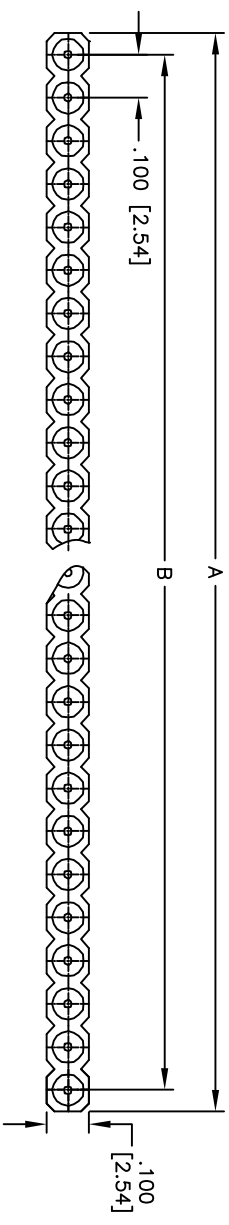


APPROVED: \_\_\_\_\_  
 DATE: \_\_\_\_\_ TITLE: \_\_\_\_\_

Rev	AWO #	Description	Date	Appr
-		RELEASED	6/24/08	
A		REDRAWN	11/17/10	



Positions: 1 thru 40  
 A = .100 [2.54] x No. of Positions per Row  
 B = .100 [2.54] x No. of Spaces per Row

**SPECIFICATIONS:**  
 Material: PPS, Glass reinforced, rated UL 94V-0  
 Contacts: Brass  
 Plating: Gold over Nickel underplate overall  
 Electrical: Gold over Nickel underplate overall  
 Current rating: 3 Amp max  
 Insulation resistance: 1,000 Mohms min @ 500 VAC  
 Dielectric withstanding voltage: 500 VAC for 1 minute  
 Operating temperature: -55°C to +125°C  
 Environmental: Lead free, RoHS compliant  
 Recommended soldering temp: 235°C for 5 seconds



UNLESS OTHERWISE SPECIFIED	
ALL DIMENSIONS ARE INCHES [MM]	
TOLERANCES: EXCEPT AS NOTED	
INCHES	HOLES
X ± .10	ØX ± .10
.XX ± .020	ØXX ± .015
.XXX ± .015	ØXXX ± .010
APPROVALS	DATE
DRAWN	DY
CHECKED	
APPROVED	

**ADAM TECH**  
 909 Rahway Avenue, Union, NJ 07083  
 Phone: 908-687-5000 Fax: 908-687-5710  
 TITLE: SCREW MACHINE TERMINAL STRIP, SINGLE ROW  
 STRAIGHT, .100" SPACING, GOLD

SIZE	PART NO.	REV.
X	MCT-1-XX-1-G	A
REF:	S00007T	SHEET 1 OF 1
SCALE:	NTS	