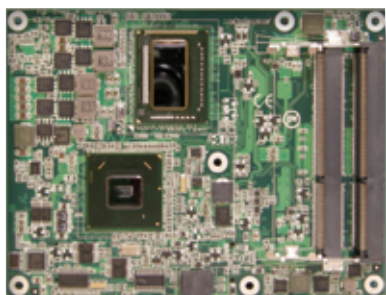


# EmETXe-i67M2/ i65M2



## Intel® 2nd Gen. Core™ COM Express Basic Type 6 CPU Module



### Features

- Soldered Onboard 2nd Gen. Intel® Core™ i7-i2610UE/ Celeron® 827E Processor
- Integrated Gigabit Ethernet
- Dual Channels 24-bit LVDS, Analog RGB, and 3 x DDI Ports
- Support Dual Independent Displays
- RAID 0, 1, 5, 10 Supported (only for EmETXe-i67M2)
- Support Intel® Active Management Technology (Intel AMT)
- **Extended Operating Temp.: -20 ~ 70°C**

### System

<b>CPU</b>	Soldered onboard Intel® Core™ i7-2610UE 1.5GHz, i7-2715QE 2.1GHz or Celeron® 827E 1.4GHz processor
<b>Memory</b>	2 x DDR3 SO-DIMM sockets, supporting SDRAM up to 8GB
<b>Chipset</b>	Intel® PCH QM67 for EmETXe-i67M2-2610UE Intel® PCH HM65 for EmETXe-i65M2-827E
<b>BIOS</b>	AMI UEFI BIOS
<b>Watchdog Timer</b>	1~255 levels reset

### I/O

<b>USB Port</b>	8 x USB 2.0 ports
<b>Digital I/O</b>	8-bit programmable Digital Input/Output
<b>Expansion Bus</b>	1 x PCIe x16 lanes 7 x PCIe x1 lanes SPI and LPC (Low Pin Count) interfaces
<b>Storage</b>	4 x Serial ATA ports: - 2 ports with 600MB/s HDD transfer rate - 2 ports with 300MB/s HDD transfer rate
<b>Ethernet Chipset</b>	1 x Intel 82579LM PCIe GbE PHY
<b>Audio</b>	HD Audio Link

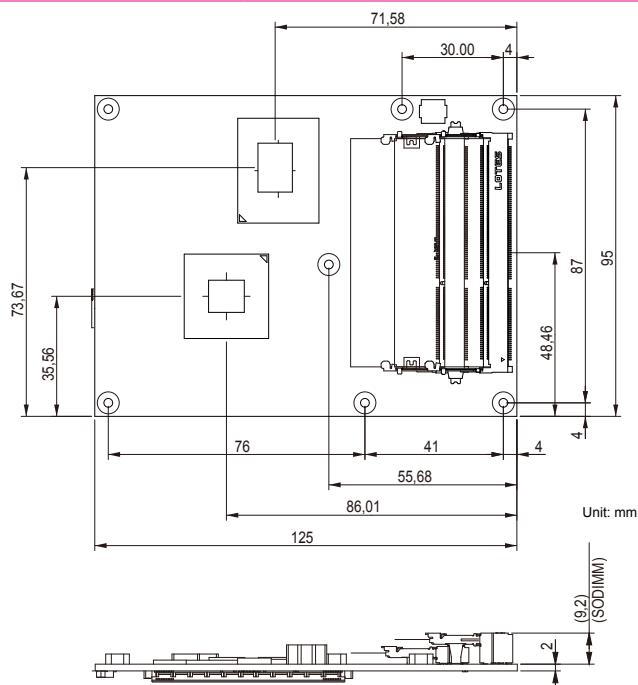
### Display

<b>Graphics Chipset</b>	Integrated Intel® HD Graphics 3000
<b>Graphics Interface</b>	Analog RGB supports resolution up to 2048 x 1536 @60Hz LCD: Dual Channels 24-bit LVDS Support DDI ports, resolution up to 2536 x 1600 Support Dual Independent Displays

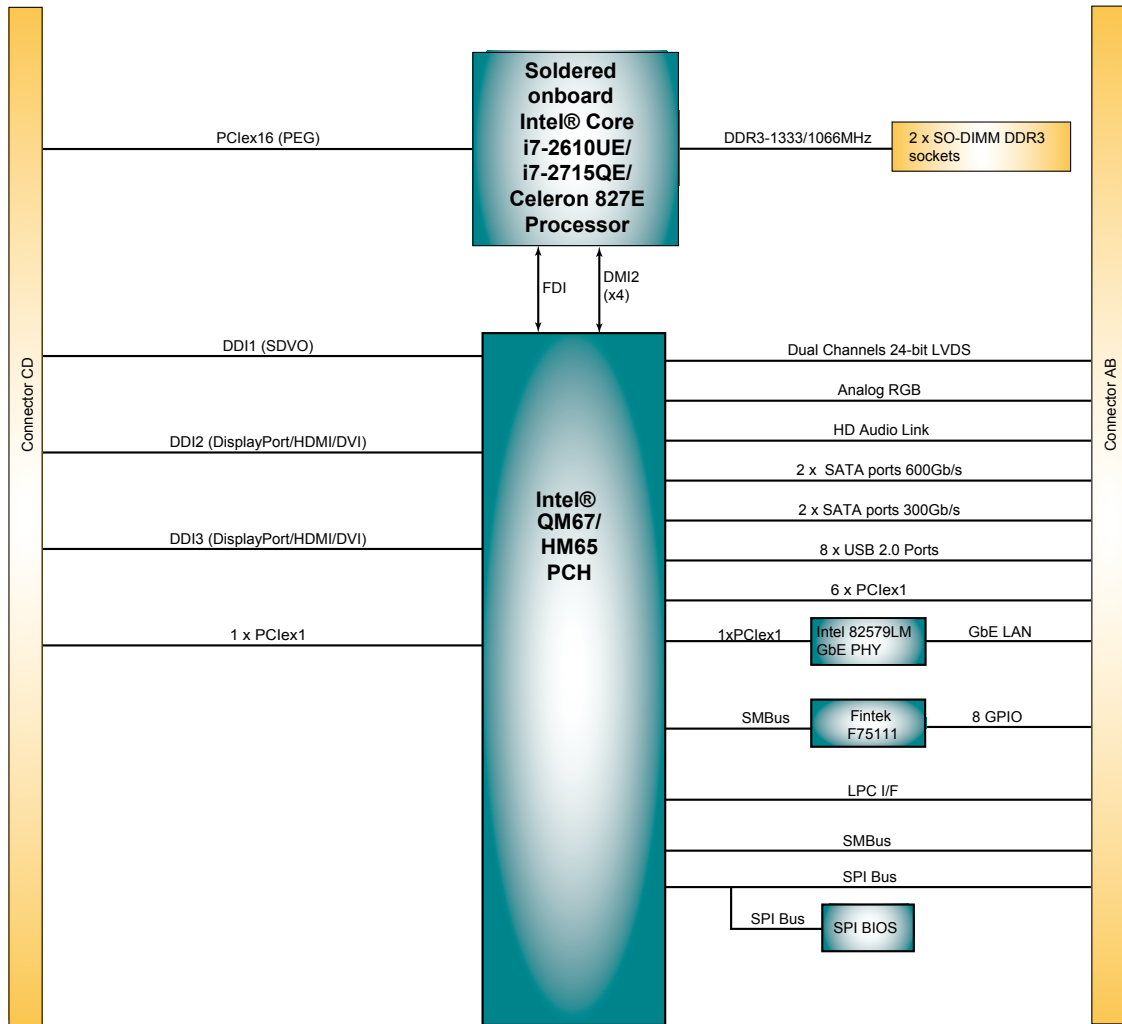
### Mechanical & Environmental

<b>Power Requirement</b>	+12V, 5VSB
<b>Power Consumption</b>	2.12A@+12V with i7-2610UE (Typical)
<b>Operating Temp.</b>	-20 ~ 70°C (-4 ~ 158°F)
<b>Operating Humidity</b>	10 ~ 95% @ 70°C (non-condensing)
<b>Dimension (L x W)</b>	125 x 95 mm (4.9" x 3.7")

### Dimensions



## Block Diagram



## Ordering Information

**EmETXe-i67M2-2610UE** Intel® Core™ i7-2610UE/ QM67 COM Express CPU module

**EmETXe-i67M2-2715QE (BTO)** Intel® Core™ i7-2715QE/ QM67 COM Express CPU module

**EmETXe-i65M2-827E** Intel® Celeron® 827E/ HM65 COM Express CPU module

## Optional Accessories

**HS-65M2-F2** Heat spreader (95x95x11mm)

**HS-0000-W4** Universal evaluation heatsink kit w/ thermal pad (dimension: 125x95x22mm, only used on a flat type heatspreader)

**PBE-1702** COM Express type 6 evaluation carrier board (ATX form factor)

Page 62

**CBK-04-1702-00**

- Cable Kit
- 1 x SATA cable
- 2 x COM port cables
- 1 x USB cable