

# LOW FREQUENCY REFLOWABLE CYLINDRICAL WATCH CRYSTAL



8.3 x 2.7mm

AB26TRJ

**RoHS**  
Compliant

## FEATURES:

- Formed leads for low cost SMD type
- Excellent shock resistance
- Reflow Capable
- Low cost for consumer applications

## APPLICATIONS:

- Real time clock
- Measuring instruments
- Blue-tooth and wireless applications

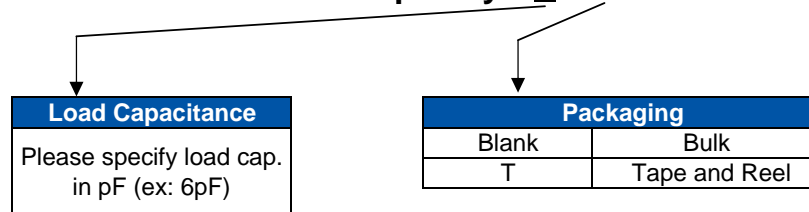
## STANDARD SPECIFICATIONS:

PARAMETERS	
ABRACON P/N	AB26TRJ Series
Frequency Range	32.768kHz / 25kHz to 200kHz
Operating Temperature	-40°C to + 85°C
Turn-over Temperature	+25°C to ± 5°C
Storage Temperature	-55°C to +125°C
Frequency Tolerance	± 20 ppm max. for 32.768KHz / ± 30 ppm max. for 25kHz to 200kHz
Frequency Stability	-0.034 ± 0.006ppm/°C <sup>2</sup>
Equivalent Series Resistance	40kohms max. (32.768kHz / 25kHz to 200kHz)
Shunt Capacitance C0	1.1pF typ. For 32.768kHz / 0.8 to 1.7pF for 25kHz to 200kHz
Load Capacitance CL	12.5pF (see options)
Quality Factor	70,000 typ. for 32.768kHz / 70,000 to 100,000 for 25kHz to 200kHz
Drive Level	1μW max.
Aging at 25°C first year	± 3 ppm max. for 32.768kHz / ± 5 ppm max. for 25kHz to 200kHz
Insulation Resistance	500 MW min. at 100 Vdc ± 15V

## OPTIONS & PART IDENTIFICATION:

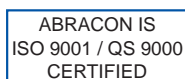
[Left blank if standard]

AB26TRJ - Frequency -  -



Available: From 6 pF to Series

**Please NOTE:** This part is not recommended for high reliability applications such as automotive, medical, or safety related applications. Please contact ABRACON for information regarding our high reliability products and for application assistance.



Visit [www.abracon.com](http://www.abracon.com) for Terms & Conditions of Sale **Revised: 08.16.07**  
30332 Esperanza, Rancho Santa Margarita, California 92688  
tel 949-546-8000 | fax 949-546-8001 | [www.abracon.com](http://www.abracon.com)

# LOW FREQUENCY REFLOWABLE CYLINDRICAL WATCH CRYSTAL

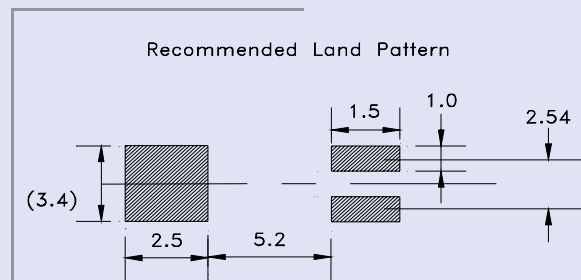
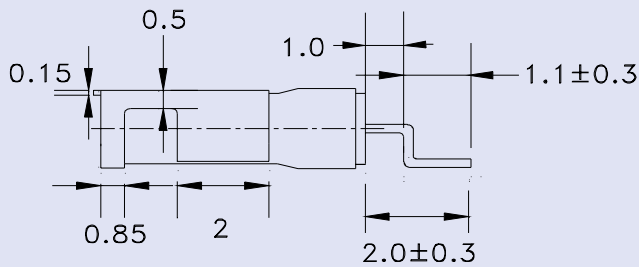
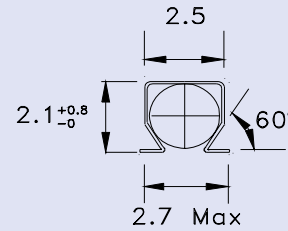
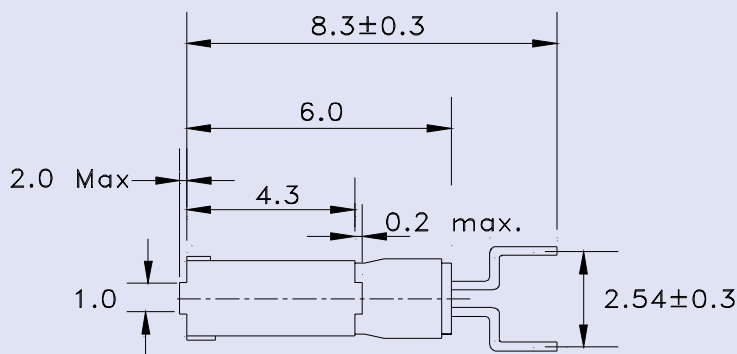


8.3 x 2.7mm

AB26TRJ

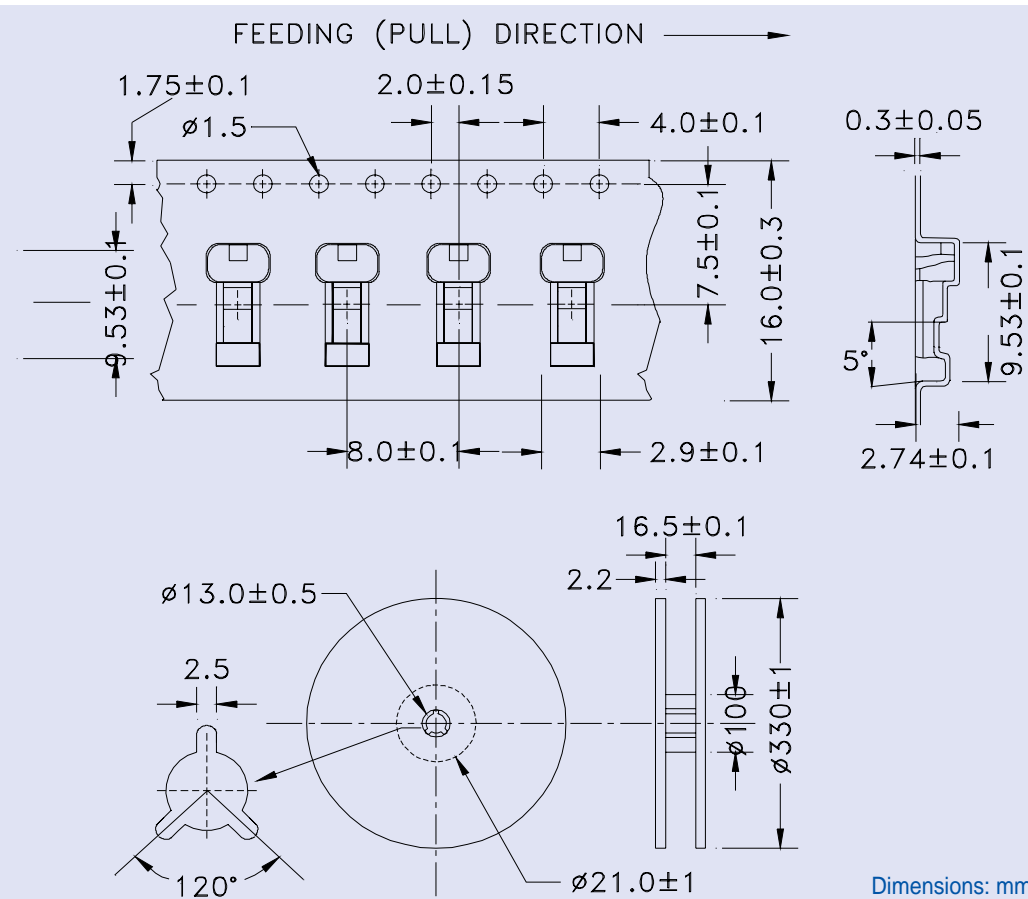
**RoHS**  
Compliant

## OUTLINE DRAWING:



Dimensions: mm

## TAPE & REEL: Tape and reel 3,000pcs/reel



Dimensions: mm

**Please NOTE:** This part is not recommended for high reliability applications such as automotive, medical, or safety related applications. Please contact ABRACON for information regarding our high reliability products and for application assistance.

ABRACON IS  
ISO 9001 / QS 9000  
CERTIFIED



Visit [www.abracon.com](http://www.abracon.com) for Terms & Conditions of Sale **Revised: 08.16.07**

30332 Esperanza, Rancho Santa Margarita, California 92688

tel 949-546-8000 | fax 949-546-8001 | [www.abracon.com](http://www.abracon.com)