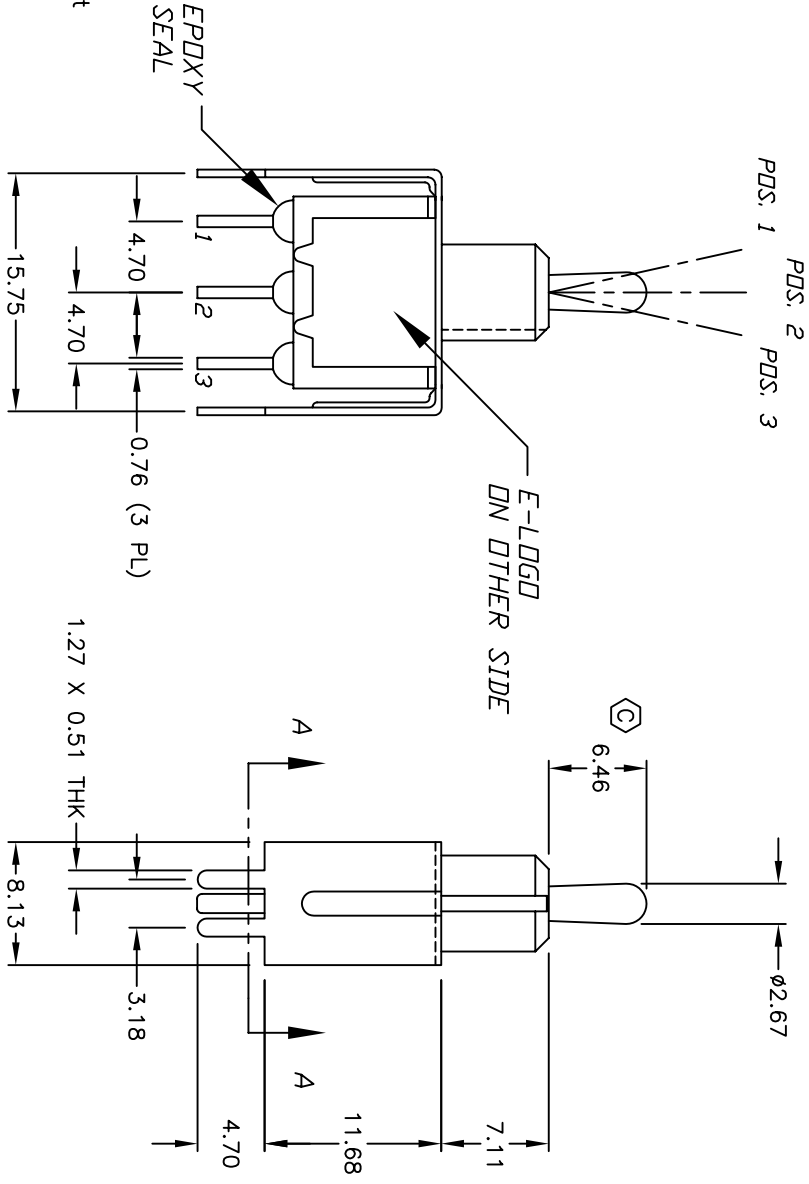


CIRCUIT: SPDT

SWITCH FUNCTION			
POS. 1	POS. 2	POS. 3	
DN	OFF	DN	
2-3	OPEN	2-1	

NOTES:

1. ALL DIMENSIONS IN MM
2. GENERAL TOLERANCE: X.X=±0.4 X.XX=±0.25
3. TERM. NOS. FOR REF. ONLY
4. RATING: 0.4VA @20V AC or DC max.
5. FIXED TERM. & MOVING CONTACT:  
Copper alloy w/GOLD plate over Nickel plate
6. ELECTRICAL LIFE: 50,000 make-and-break cycles at full load.
7. INSULATION RESISTANCE: 1000M ohm min.
8. DIELECTRIC STRENGTH: 1000V RMS min. @sea level.
9. OPERATING TEMP.: -30°C to +85°C



REV.	ECN No.	DESCRIPTION	DATE	CHKD
D	15423	CORRECT DESCRIPTION	10/20/05	PH
C	13700	CORRECTED ACTUATOR	1/12/04	AR
B	12045	REVISED AND REDRAWN	4/8/02	CB
		DESCRIPTION		

TITLE		SCALE		DATE		DR		DWG		REV	
100 SP-3 T2 B4 V22 R E (GOLD CONTACTS)		2:1		4/8/02		CB		T110012		D	



THE INFORMATION CONTAINED IN THIS DOCUMENT IS PROPRIETARY TO E-SWITCH AND IS NOT TO BE COPIED OR TRANSMITTED