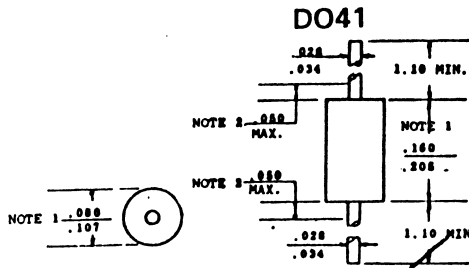
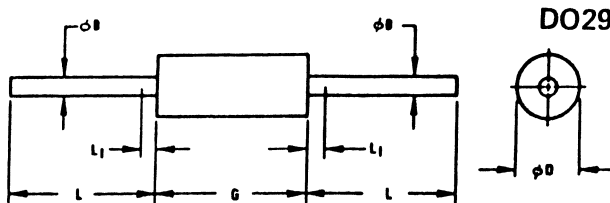


1N4833
SILICON ZENER DIODE

Zener Type No.	Zener Voltage at I_{ZT}		Max. Zener Impedance @ I_{ZT} Ohms	Zener Voltage Tolerance	Power Rating
	Volts	@ mA			
1N4833	11.0	23.0	10.0	No Suffix = 20% Suffix A = 10% Suffix B = 5%	1.2 watt



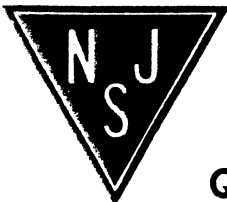
- NOTES:
- Package contour optional within cylinder of diameter $\frac{.028}{.107}$ and length $\frac{.160}{.208}$. Slugs if any, shall be included within this cylinder but shall not be subject to the minimum limit of $\frac{.028}{.107}$.
 - Lead diameter not controlled in this zone to allow for flash, lead finish build up, and minor irregularities other than slugs.



- NOTES:
- PACKAGE CONTOUR OPTIONAL WITHIN CYLINDER OF DIAMETER ϕD AND LENGTH G . SLUGS, IF ANY, SHALL BE INCLUDED WITHIN THIS CYLINDER, BUT SHALL NOT BE SUBJECT TO THE MINIMUM LIMIT OF ϕD .
 - LEAD DIAMETER NOT CONTROLLED IN THIS ZONE TO ALLOW FOR FLASH, LEAD FINISH BUILD-UP, AND MINOR IRREGULARITIES OTHER THAN SLUGS.

SYMBOL	INCHES		MILLIMETERS		NOTES
	MIN.	MAX.	MIN.	MAX.	
ϕB	.029	.033	0.737	0.838	-
ϕD	.120	.150	3.05	3.81	1
G	.315	.360	8.01	9.14	1
L	1.000	-	25.40	-	-
L_1	-	.050	-	1.27	2

MILLIMETER DIMENSIONS ARE DERIVED FROM ORIGINAL INCH DIMENSIONS.



Quality Semi-Conductors