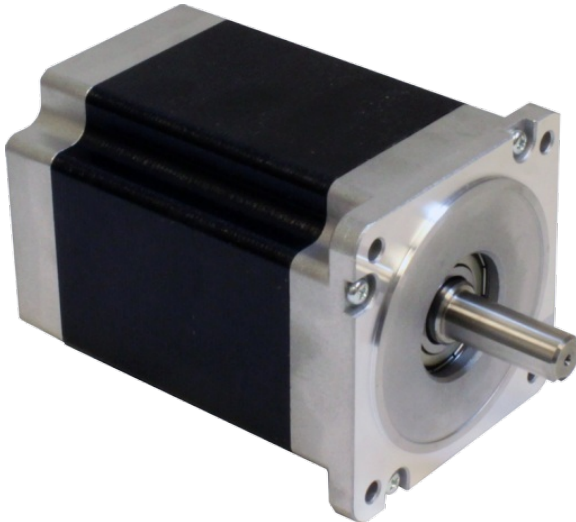


HT34-489

NEMA 34 High Torque Step Motor

1pc. - 423.00
50pc. - 317.25



Product Features

- 2-phase hybrid step motor
- High torque design
- Standard NEMA 34 dimensions
- Optimized for high bus voltage operation



Description

Product Description:

The HT34-489 two-phase stepper motor is designed for use with the STAC6 series of stepper drives (120 VAC input versions only) and is suitable for a wide range of motion control applications. The motor comes with an integral 10 ft shielded cable and a preassembled drive connector for easy connection to a STAC6 drive.

When not used with STAC6 drives, the preassembled drive connector can be removed to reveal 8 motor leads plus 1 ground lead. The 8 motor leads can be connected in one of three ways to the step motor drive of your choice: bipolar series (required for STAC6 drives), bipolar parallel, or unipolar.







Note: The HT34-489 step motor has been superseded by the [HT34-496](#) step motor for use in all new applications with STAC6 stepper drives.

Specifications

Part Number:	HT34-489
Frame Size:	NEMA 34
Motor Type:	High torque
Part Number w/Double Shaft:	HT34-489D
Part Number w/Encoder:	HT34-489D-YAA
Motor Length:	4.63 inches
Number of Lead Wires:	8
Lead Wire Configuration:	shielded cable w/ connector
Lead Wire/Cable Length:	10 feet inches
Lead Wire Gauge:	22 AWG
Unipolar Holding Torque:	785 oz-in
Bipolar Holding Torque:	1110 oz-in
Step Angle:	1.8 deg
Bipolar Series Current:	4.10 A/phase
Bipolar Series Resistance:	1.08 Ohms/phase
Bipolar Series Inductance:	10.5 mH/phase
Bipolar Parallel Current:	8.20 A/phase
Bipolar Parallel Resistance:	0.27 Ohms/phase
Bipolar Parallel Inductance:	2.63 mH/phase
Unipolar Current:	5.80 A/phase
Unipolar Resistance:	0.54 Ohms/phase
Unipolar Inductance:	2.63 mH/phase
Rotor Inertia:	4.53E-02 oz-in-sec ²
Integral Gearhead:	No
Weight:	7.7 lbs
Storage Temperature:	-40 to 70 °C

Operating Temperature:	-20 to 50 °C
Insulation Class:	Class B (130 °C)
Maximum Radial Load:	42 lbs
Maximum Thrust Load:	33 (2.2 w/ encoder) lbs
Shaft Run Out:	0.002 inch T.I.R. max
Radial Play:	0.001 inch max w/ 1.1 lb load
End Play:	0.003 inch max w/ 2.2 lb load
Perpendicularity:	0.003 inches
Concentricity:	0.003 inches

Downloads

Family Datasheet:	 StepMotorWiring-8-lead-cabled-solid.pdf
Datasheet:	http://s3.amazonaws.com/applied-motion-pdf/HT34-489.pdf
2D Drawing:	 HT34-489_RevK.pdf  HT34-489D-YAA_RevB.pdf
3D Drawing:	 34HT117D.igs  HT34-489D_117mm_YAA_Enc.igs
Speed-Torque Curves:	 STAC6_speed-torque.pdf

Pricing

	HT34-489 Part No. w/ Single Shaft	HT34-489D Part No. w/ Double Shaft	HT34-489D-YAA Part No. w/ Encoder
1pc.	\$423.00	\$423.00	\$549.00
25pc.	\$363.78	\$363.78	\$472.14
50pc.	\$317.25	\$317.25	\$411.75
100pc.	Request a Quote for 100+ piece pricing.		