

KEY FEATURES

- Power Module for PCB Mountable
- Smaller Dimension with High Efficiency
- 4:1 Wide Input Range
- Regulated Output
- Low Ripple and Noise
- Remote ON/OFF Control (Optional)
- Operating Temperature: -40°C...+85°C (with derating)
- Small Size :1.0 x 1.0 x 0.433 Inches
- 3-Years Product Warranty


ELECTRICAL SPECIFICATIONS

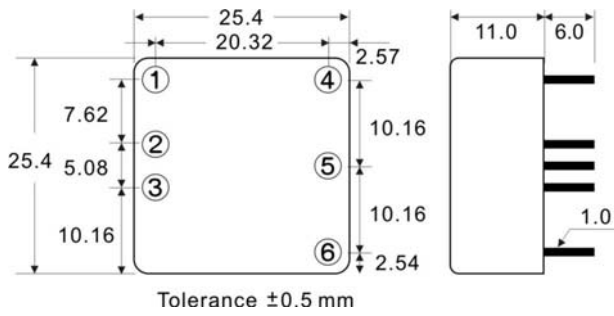
All specifications valid at normal input voltage, full load and +25°C after warm-up time unless otherwise stated.

Model No. (Single Output)		SW30-48-3.3S	SW30-48-5S	SW30-48-12S	SW30-48-15S
Max Output Wattage (W)		19.8W	30W	30W	30W
Input	Input Filter	L-C type			
	Voltage	48V (18-72V)			
Output	Voltage (V.DC.)	3.3	5	12	15
	Voltage Accuracy	±2%			
	Current (mA) max	6000	6000	2500	2000
	Line Regulation (LL-HL) (typ.)	±0.5%			
	Load Regulation (10-100%) (typ.)	±1%			
	Capacitor Load (max)	Pending	Pending	Pending	Pending
	Ripple	100 mV max.		125mV max.	
	Noise	100 mV max.		125mV max.	
	Efficiency	88%	90%	90%	90%
Switching Frequency	450KHz		300KHz		
Protection	Over Power Protection	Auto-recovery			
	Over Voltage Protection	Zener diode clamp			
	Short Circuit Protection	Current limit, auto-recovery			
Isolation	Voltage	1600 VDC.			
	Resistance	10 ⁸ ohms			
Environment	Operating Temperature	-40°C...+85C (with derating)			
	Storage Temperature	-55°C...+105°C			
	Temperature Coefficient	±0.05%/°C			
	Humidity	95% RH			
	MTBF	>800,000 h @ 25°C (MIL-HDBK-217F)			
Physical	Dimension (L x W x H)	1.0 x 1.0 x 0.433 Inches (25.4 x 25.4 x 11.0 mm) Tolerance ±0.5 mm			
	Case Material	six-side shielded Aluminum with Non-Conductive base, Black Anodize			
	Weight	15g			
	Cooling Method	Free-air convection			
Remote ON/OFF	DC-DC ON	Open or +5 VDC ~ +15 VDC			
	DC-DC OFF	When -DC IN and ON/OFF CTL is Short (or 0 VDC ~ +0.5VDC)			
	Input Current of Remote Control Pin	1mA			
	Remote off State Input Current	4mA			

NOTE

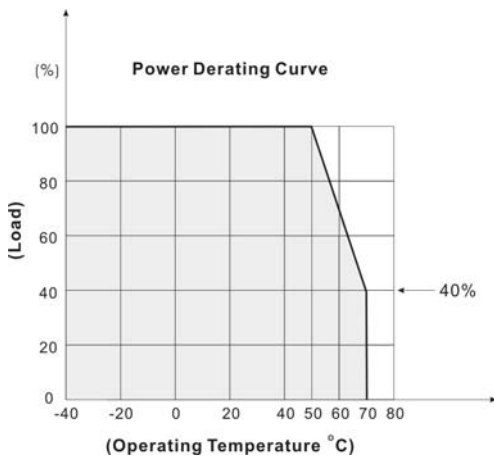
Ripple & Noise are measured at 20MHz of bandwidth with 0.1uF & 47uF parallel capacitor.

MECHANICAL DIMENSION (Top View)

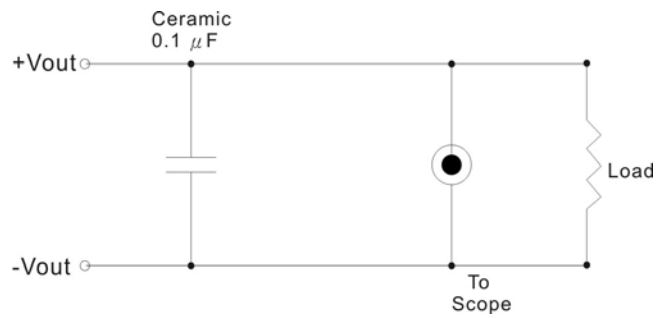


PIN#	Single
1	ON / OFF CTL
2	-DC IN
3	+DC IN
4	-DC OUT
5	NO PIN
6	+DC OUT

DERATING



OUTPUT NOISE



The output noise is measured with 0.1μF tantalum capacitor.