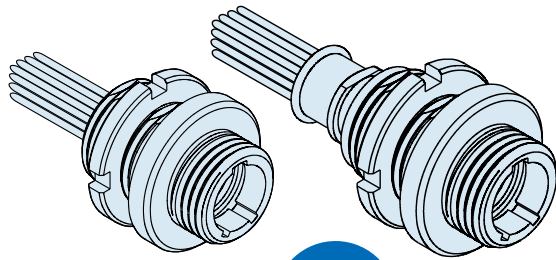


# 892-001 Circular Threaded, Front Panel Mount Receptacle Connector with Insulated Wire



**MATES  
WITH  
892-006**

**Glenair Front Panel Mount Threaded Coupling Receptacle Connectors** feature gold alloy TwistPin contacts, offering premium performance and reliability for demanding applications. Available with or without backshell, overmolded or shrink boot.

**Choose Aluminum or Stainless Steel Shells** in 6 layouts from 4 to 55 contacts. These connectors are intermateable with nanominiature plug connectors 892-006.

How To Order Circular Nano Connectors	
<b>Sample Part Number</b>	892 -001 -02 1-7 N A2 -0 A 7 -12
<b>Series</b>	892 - Nano Circular with Insulated Wire
<b>Shell Style</b>	001 - Front Panel Mount Threaded Coupling Receptacle
<b>Accessory</b>	01 - No Backshell 03 - Overmolded 02 - With Backshell 04 - Shrink Boot
<b>Shell Size/Contact Arrangement</b>	1-4 - Shell Size 1 with 4 contacts 1-7 - Shell Size 1 with 7 contacts 2-19 - Shell Size 2 with 19 contacts 3-37 - Shell Size 3 with 37 contacts 4-44 - Shell Size 4 with 44 contacts 4-55 - Shell Size 4 with 55 contacts <i>See Table I</i>
<b>Polarization</b>	N - Normal A - Alternate
<b>Shell Material/Finish</b>	A2 - Aluminum/Electroless Nickel A5 - Aluminum/Gold Over Nickel S1 - Stainless Steel/Zinc Cobalt (Black) S2 - Stainless Steel/Passivated
<b>Wire Gauge</b>	0 - 30 AWG 2 - 32 AWG
<b>Wire Type</b>	A - Ultralightweight XLETFE insulation, silver coated ultrahigh strength copper B - Extruded PTFE insulation, silver-coated copper NEMA HP3-ETX (MIL-W-16878/6) C - Cross linked modified ETFE insulation, silver coated high strength copper. MIL-W-22759/33 (not available in #32 AWG)
<b>Wire Color</b>	1 - White 2 - Yellow 7 - 10 Color repeating (Wire type A is striped, types B and C are solid colors)
<b>Wire Length (Inches)</b>	12 = 12.00 + 1.00 Inches

Table I: 892 Circular Receptacle Mating Face Views

Size 1-4 4 Contacts	Size 1-7 7 Contacts	Size 2-19 19 Contacts	Size 3-37 37 Contacts	Size 4-44 44 Contacts	Size 4-55 55 Contacts

Dimensions in inches (millimeters) and are subject to change without notice.

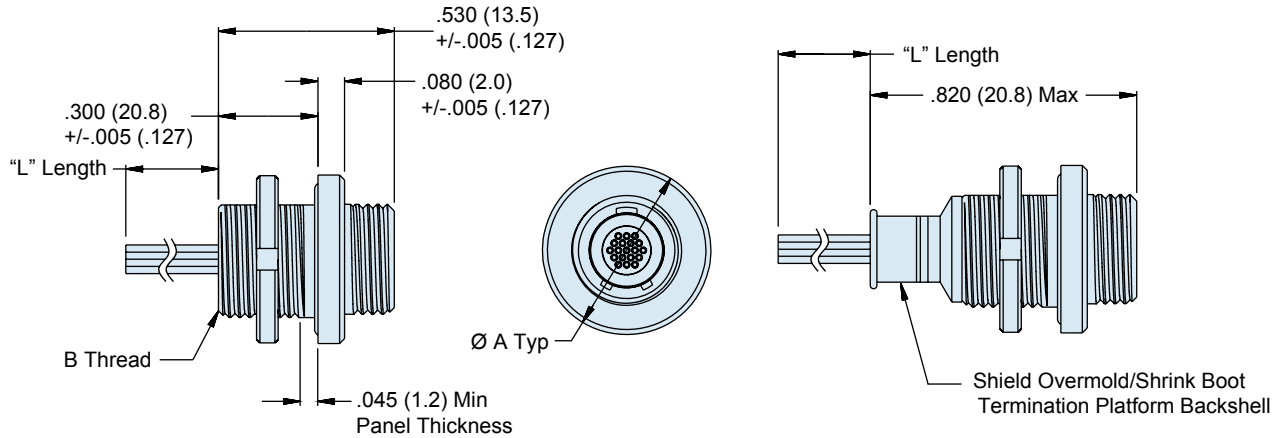
# 892-001

## Circular Threaded, Front Panel Mount Receptacle Connector with Insulated Wire

Table II: Dimensions

892-001-01 Without Termination Platform

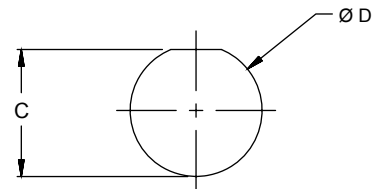
892-001-02 With Termination Platform



Size	Ø A +/- .005	B Thread
1-4	.489 (12.5)	M8.5 X 0.75-6g
1-7	.489 (12.5)	M8.5 X 0.75-6g
2-19	.528 (13.5)	M9.5 X 0.75-6g
3-37	.567 (14.5)	M10.5 X 0.75-6g
4-44	.627 (16.0)	M12.0 X 0.75-6g
4-55	.627 (16.0)	M12.0 X 0.75-6g

Table III: Front Panel Mount Panel Cut-Out

Size	C +.002 / -.001	ØD +.002 / -.001
1-4	.320 (8.2)	.340 (8.7)
1-7	.320 (8.2)	.340 (8.7)
2-19	.359 (9.2)	.380 (9.7)
3-37	.399 (10.2)	.420 (10.7)
4-44	.457 (11.7)	.479 (12.2)
4-55	.457 (11.7)	.479 (12.2)

**Material/finish:**

- Shell/spanner nut/backshell - see part number breakdown
- Insulator - LCP/na
- Socket contacts - gold alloy
- O-rings - fluorosilicone/na
- Internal latching spring - stainless steel/gold plate

Dimensions in inches (millimeters) and are subject to change without notice.