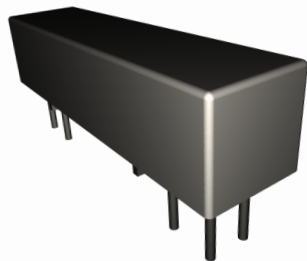


20W Series

PCB Mount



PRODUCT DESCRIPTIONS

The 20W Series consists of our 20 Series mercury switch, and has been on the market for more than 25 years. This series is available with different electrical performances tuned to your specific requirements.

If you are looking for a product not listed in our catalog, please contact our sales engineers for more details.

SPECIFICATIONS

20W Series		20W-1A□1□2□0			Wetted Mercury
Parameters	Units	1 Form A			Test Conditions
Coil Specifications					
Nominal Coil Voltage	VDC	5.0	12.0	24.0	
Coil Resistance	Ω	70	330	1200	±10% @ 20°C
Operate Voltage	VDC Max	3.6	8.8	17.6	15°C to 35°C
Release Voltage	VDC Min	0.7	1.2	2.4	15°C to 35°C
Contact Ratings					
Switching Voltage	Volts	500			Max DC/Peak AC resistance
Switching Current	Amps	1.0			Max DC/Peak AC resistance
Carry Current	Amps	2.0			Max DC/Peak AC resistance
Contact Rating	Watts	50			Max DC/Peak AC resistance
Life Expectancy	x10 ⁶ Cycle	1000			@ 1V 10mA
Contact Resistance	mΩ	80			Max initial @ operate voltage
Contact Resistance Stability	mΩ	2.0			Max initial @ operate voltage
Relay Specifications					
Insulation Resistance	Ω Min	10 ¹⁰			Between all isolated pins @ 500V 20°C 40%RH
Dielectric Strength	VDC Min	1000			Between contacts
	VDC Min	1000			Contacts to shield
	VDC Min	1000			Contacts/Shield to coil
Operate Time (No Bounce)	msec Max	2.5			@ nominal coil voltage
Release Time	msec Max	2.5			50Hz square wave Diode suppression
Environmental Ratings					
Measurement Reference Conditions		Storage temp: -20°C to +80°C			
Temp: 15°C to 35°C		Operate temp: -10°C to +60°C			
Humidity: 25% to 75%RH		Vibration: 20G's to 2000Hz			
Atmospheric Pressure: 860 to 1060hpa		Shock: 50G's			

Ordering Code:

20W-1A□1□2□0

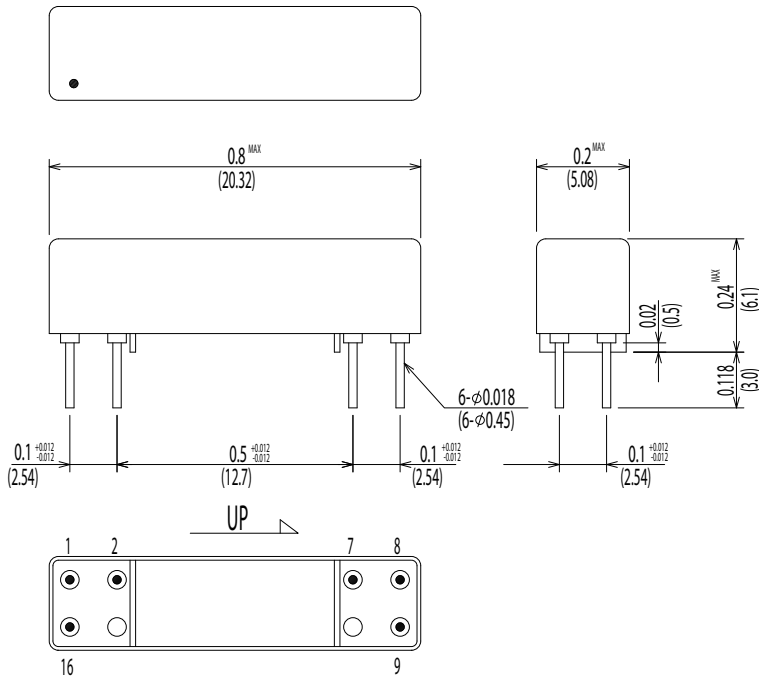
□1)=1 (5.0VDC), 2 (12.0VDC), 3 (24.0VDC)

□2)=D (Diode), E (LED), N (No diode)

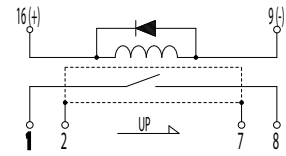
Dimensions All Dimensions are inches (mm)

Schematic <Top View>

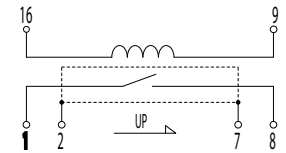
20W-1A□2D0/20W-1A□2N0



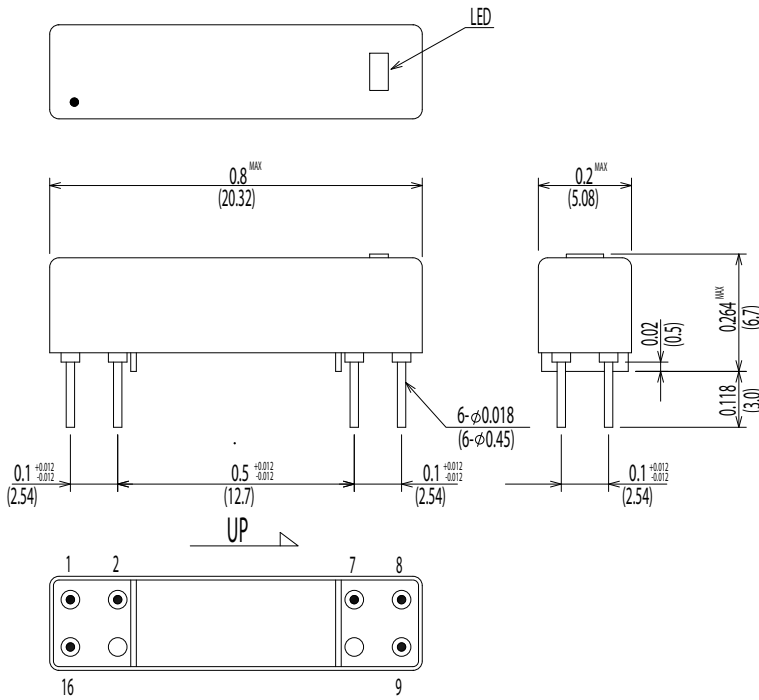
20W-1A□2D0



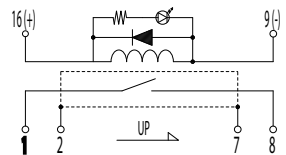
20W-1A□2N0



20W-1A□2E0



20W-1A□2E0



Note: Hg wet contacts must be mounted within 30° of vertical plane.