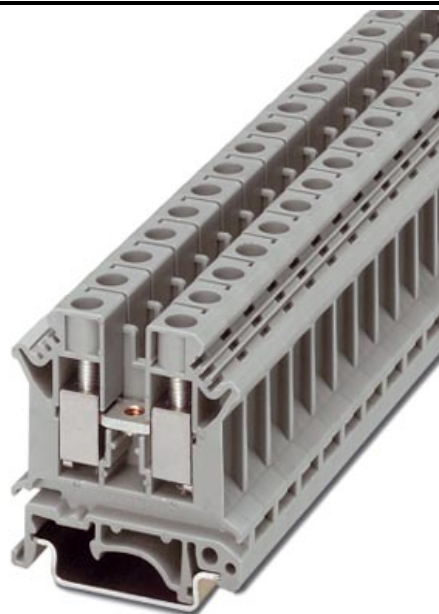


Please note that the data given here has been taken from the online catalog. For comprehensive information and data, please refer to the user documentation at <http://www.download.phoenixcontact.com>. The General Terms and Conditions of Use apply to Internet downloads.

► Extract from the online catalog



Universal terminal block with screw connection, cross section: 0.5- 10 mm², AWG: 20- 6, width: 10.2 mm

| | |
|--------------------------|--------------------|
| Order No. | 3005073 |
| Ord designation | UK 10 N |
| EAN | 4017918091019 |
| Pack | 50 Pcs. |
| Customs tariff | 85369010 |
| Weight/Piece | 0,017046 KG |
| Catalog page information | Page 213 (CL-2005) |

► Product notes

WEEE/RoHS-compliant since: 01/01/2003



IMPORTANT : This date is valid for Customers in Germany only. Date Format is MM/DD/YYYY. Please contact your local in-country Phoenix Contact location or designated business partner for a Logistics Compliant date in your area. In order to guarantee delivery of RoHS-Compliant product, please purchase Phoenix Contact parts from authorized Phoenix Contact representatives and distributors.

UK 10 N



► **Technical data**

General

| | |
|------------------------------------|------|
| Number of levels | 1 |
| Number of connections | 2 |
| Color | gray |
| Insulating material | PA |
| Inflammability class acc. to UL 94 | V0 |

Dimensions

| | |
|------------------|---------|
| Width | 10.2 mm |
| Length | 42.5 mm |
| Height NS 35/7,5 | 47 mm |
| Height NS 35/15 | 54.5 mm |
| Height NS 32 | 52 mm |

Technical data

| | |
|----------------------------------|--|
| Maximum load current | 76 A (with 16 mm ² conductor cross section) |
| Rated surge voltage | 8 kV |
| Contamination class | 3 |
| Surge voltage category | III |
| Insulating material group | I |
| Connection in acc. with standard | IEC / EN |
| Nominal current I _N | 76 A |
| Nominal voltage U _N | 800 V |
| Open side panel | ja |

Connection data

| | |
|---|---------------------|
| Conductor cross section solid min. | 0.5 mm ² |
| Conductor cross section solid max. | 16 mm ² |
| Conductor cross section stranded min. | 0.5 mm ² |
| Conductor cross section stranded max. | 10 mm ² |
| Conductor cross section AWG/kcmil min. | 20 |
| Conductor cross section AWG/kcmil max | 6 |
| Conductor cross section stranded, with ferrule without plastic sleeve min. | 0.5 mm ² |
| Conductor cross section stranded, with ferrule without plastic sleeve max. | 10 mm ² |
| Conductor cross section stranded, with ferrule with plastic sleeve min. | 0.5 mm ² |
| Conductor cross section stranded, with ferrule with plastic sleeve max. | 6 mm ² |
| 2 conductors with same cross section, solid min. | 0.5 mm ² |
| 2 conductors with same cross section, solid max. | 4 mm ² |
| 2 conductors with same cross section, stranded min. | 0.5 mm ² |
| 2 conductors with same cross section, stranded max. | 6 mm ² |
| 2 conductors with same cross section, stranded, TWIN ferrules with plastic sleeve, min. | 0.5 mm ² |
| 2 conductors with same cross section, stranded, TWIN ferrules with plastic sleeve, max. | 6 mm ² |
| 2 conductors with same cross section, stranded, ferrules without plastic sleeve, min. | 0.5 mm ² |

UK 10 N



| | |
|---|--------------------|
| 2 conductors with same cross section, stranded, ferrules 2.5 mm ² without plastic sleeve, max. | |
| Cross section with insertion bridge, solid max. | 16 mm ² |
| Cross section with insertion bridge, stranded max. | 10 mm ² |
| Type of connection | Screw connection |
| Stripping length | 10 mm |
| Internal cylindrical gage | B6 |
| Screw thread | M 4 |
| Tightening torque, min | 1.5 Nm |

► Certificates / Approvals

Certificate logos



CSA

| | |
|-----------------------|-------|
| Nominal voltage U_N | 600 V |
| Nominal current I_N | 65 A |
| AWG/kcmil | 24-6 |

CUL

| | |
|-----------------------|-------|
| Nominal voltage U_N | 600 V |
| Nominal current I_N | 65 A |
| AWG/kcmil | 24-6 |

UL

| | |
|-----------------------|-------|
| Nominal voltage U_N | 600 V |
| Nominal current I_N | 65 A |
| AWG/kcmil | 24-6 |

► Accessories

| Item | Designation | Description |
|-----------------|-------------------------------|---|
| Assembly | | |
| 3003224 | ATP-UK | Separating plate, for visual and electrical separation of terminal groups, width: 1.5 mm, color: Gray |
| 3022218 | CLIPFIX 35 | Snap-on end bracket, for 35 mm NS 35/7.5 or NS 35/15 mounting rail, can be fitted with Zack strip ZB 8 and ZB 8/27, terminal strip marker KLM 2 and KLM, width: 9.5 mm, color: gray |
| 3003020 | D-UK 4/10 | Cover, width: 1.8 mm, color: gray |
| 3003101 | D-UK 4/10 BU | Cover, width: 1.8 mm, color: blue |
| 1201442 | E/UK | End clamp, for supporting the electronic base. If mounted vertically, 2 end clamps are required in each case |
| 1201028 | NS 32 AL UNPERF 2000MM | G rail 32 mm (NS 32) |
| 1201280 | NS 32 CU/120QMM UNPERF 2000MM | G-profile DIN rail, deep-drawn, material: Copper, unperforated, height 15 mm, width 32 mm, length 2 m |
| 1201358 | NS 32 CU/35QMM UNPERF 2000MM | G-profile DIN rail, material: Copper, unperforated, height 15 mm, width 32 mm, length 2 m |
| 1201002 | NS 32 PERF 2000MM | G-profile DIN rail, material: Steel, perforated, height 15 mm, width 32 mm, length 2 m |
| 1201015 | NS 32 UNPERF 2000MM | G-profile DIN rail, material: Steel, unperforated, height 15 mm, width 32 mm, length 2 m |
| 0801762 | NS 35/ 7,5 CU UNPERF 2000MM | DIN rail, material: Copper, unperforated, height 7.5 mm, width 35 mm, length: 2 m |
| 0801733 | NS 35/ 7,5 PERF 2000MM | DIN rail, material: Steel, perforated, height 7.5 mm, width 35 mm, length: 2 m |
| 0801681 | NS 35/ 7,5 UNPERF 2000MM | DIN rail, material: Steel, unperforated, height 7.5 mm, width 35 mm, length: 2 m |
| 1201756 | NS 35/15 AL UNPERF 2000MM | DIN rail, deep-drawn, high profile, unperforated, 1.5 mm thick, material: Aluminum, height 15 mm, width 35 mm, length 2 m |
| 1201895 | NS 35/15 CU UNPERF 2000MM | DIN rail, material: Copper, unperforated, 1.5 mm thick, height 15 mm, width 35 mm, length: 2 m |
| 1201730 | NS 35/15 PERF 2000MM | DIN rail, material: Steel, perforated, height 15 mm, width 35 mm, length: 2 m |
| 1201714 | NS 35/15 UNPERF 2000MM | DIN rail, material: Steel, unperforated, height 15 mm, width 35 mm, length: 2 m |
| 1201798 | NS 35/15-2,3 UNPERF 2000MM | DIN rail, material: Steel, unperforated, 2.3 mm thick, height 15 mm, width 35 mm, length: 2 m |
| 0204110 | STL 10N/5N | Step bracket, 2-pos. |
| 1302215 | TS-K | Separating plate, for electrical separation of neighboring bridges, can be fitted later, no loss of pitch, color: Gray |
| Bridges | | |
| 0203153 | EB 2-10 | Insertion bridge, 2-pos., fully insulated |
| 0203328 | EB 3-10 | Insertion bridge, 3-pos., fully insulated |
| 0203137 | EB 10-10 | Insertion bridge, 10-pos., divisible, fully insulated |
| 0203195 | FB 2-10 | Fixed bridge, 2-pos., divisible, with screws, screw heads without insulation |
| 0203140 | FB 3-10 | Fixed bridge, for cross connections, with screws, screw heads without insulation, 3-pos. |

UK 10 N



| | | |
|---------|--------------|--|
| 0203182 | FB 4-10 | Fixed bridge, 4-pos. |
| 0203179 | FB 10-10 | Fixed bridge, 10-pos., divisible, with screws, screw heads without insulation |
| 0203247 | FB 10-10-EX | Fixed bridge, 10-pos. |
| 0203483 | FBI 2-10 | Fixed bridge, for cross connections, with screws, screw heads without insulation, 2-pos. |
| 0203276 | FBI 10-10 | Fixed bridge, 10-pos., screw heads with insulating collar, divisible, with screws |
| 0203205 | KB- 10 | Chain bridge, across any number of terminal blocks, 1-pos., with screw |
| 0200062 | SB 2- 8/13 N | Switching bridge, 2-pos. |

Marking

| | | |
|---------|------------------|---|
| 1007248 | SBS10:UNBEDRUCKT | Marker cards, unprinted, for individual labeling with the M-PEN, 250-section, perforated, white plastic |
| 1004225 | WS 4-10 | Warning plate, with 2 plastic screws, across 4 terminal blocks, pitch 10 mm |
| 1004429 | WS 5-10 | Warning plate, with 2 plastic screws, across 5 terminal blocks, pitch 10 mm |
| 1050525 | ZB10:SO/CMS | Zack strip, 10-section, divisible, special printing, marking according to customer requirements |

Plug/Adapter

| | | |
|---------|---------------------|--|
| 0310541 | KSS 10 | Short circuit connector, for short circuiting neighboring terminal blocks, can only be used with PSB or PSBJ, 2-pos., pitch: 10.2 mm, color: Black |
| 0311647 | PS-MT | Test plug, consisting of: metal part for 4 mm diameter socket hole and insulating sleeve for PS metal part |
| 0303299 | PSB 4/7/6 | Test plug socket, not insulated, length: 7 mm, screw thread width: 4 mm, socket width: 6 mm |
| 0303406 | PSBJ 4/15/6 BK | Test plug socket, insulated, length: 15 mm, screw thread width: 4 mm, socket width: 6 mm, insulation material in black |
| 0303354 | PSBJ 4/15/6 BU | Test plug socket, insulated, length: 15 mm, screw thread width: 4 mm, socket width: 6 mm, insulation material in blue |
| 0303419 | PSBJ 4/15/6 FARBLOS | Test plug socket, insulated, length: 15 mm, screw thread width: 4 mm, socket width: 6 mm, insulation material transparent |
| 0303370 | PSBJ 4/15/6 GN | Test plug socket, insulated, length: 15 mm, screw thread width: 4 mm, socket width: 6 mm, insulation material in green |
| 0303396 | PSBJ 4/15/6 GY | Test plug socket, insulated, length: 15 mm, screw thread width: 4 mm, socket width: 6 mm, insulation material in gray |
| 0303325 | PSBJ 4/15/6 RD | Test plug socket, insulated, length: 15 mm, screw thread width: 4 mm, socket width: 6 mm, insulation material in red |
| 0303383 | PSBJ 4/15/6 VT | Test plug socket, insulated, length: 15 mm, screw thread width: 4 mm, socket width: 6 mm, insulation material in violet |
| 0303312 | PSBJ 4/15/6 WH | Test plug socket, insulated, length: 15 mm, screw thread width: 4 mm, socket width: 6 mm, insulation material in white |
| 0303367 | PSBJ 4/15/6 YE | Test plug socket, insulated, length: 15 mm, screw thread width: 4 mm, socket width: 6 mm, insulation material in yellow |

► Address

PHOENIX CONTACT GmbH & Co. KG
Flachsmarktstr. 8
32825 Blomberg
Germany
Phone +49 5235 3 00
Fax +49 5235 3 41200
<http://www.phoenixcontact.com>
Phoenix Contact
Technical modifications reserved;