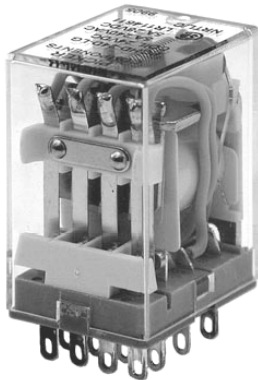


Minature 4 pole 5 Amp General Purpose Relay

PC118



FEATURES

- 4 pole and 2 pole contact form
- 5 to 7 amp switching capacity
- AC and DC coils available
- Available as Plug in or with PC pins
- Available with gold plated contacts
- Available with bipolar LED indicator light
- Available with top mounting flange
- Now available with Push TO Test Button

UL **us** File # E86876

UL/CUR RATINGS

Load Type	Voltage	2 Form C (DPDT)	4 Form C (4PDT)
General Purpose	120 VAC	7 A	5 A
	240 VAC	7 A	5 A
	30 VDC	7 A	5 A
Resistive	120 VAC	7 A	5 A
	240 VAC	7 A	5 A
	30 VDC	7 A	5 A
Max. Switching Power		1540 VA 210 W	1100 VA 150 W

CONTACT DATA

Material		AgCdO (Silver Cadmium Oxide)
Initial Contact Resistance		50 milliohms max @ 1A, 6VDC
Service Life	Mechanical	2 X 10 ⁷ Operations
	Electrical	1 X 10 ⁵ Operations

CHARACTERISTICS

Operate Time	25 ms. Max.
Release Time	25 ms. Max.
Insulation Resistance	1,000 megohms min, at 500VDC, 50%RH
Dielectric Strength	1500 Vrms, 1 min. between coil and contacts
	1000 Vrms, 1 min. between open contacts
	1000 Vrms, 1 min. between contact poles
Shock Resistance	10 g, 11ms, functional; 100 g, destructive
Vibration Resistance	DA 1.5mm, 10-55 Hz
Power Consumption	DC coil 0.9 W, AC coil 1.2 VA
Ambient Temperature Range	-55 to 70 C, -55 to 130 C storage
Weight	37 grams approx.

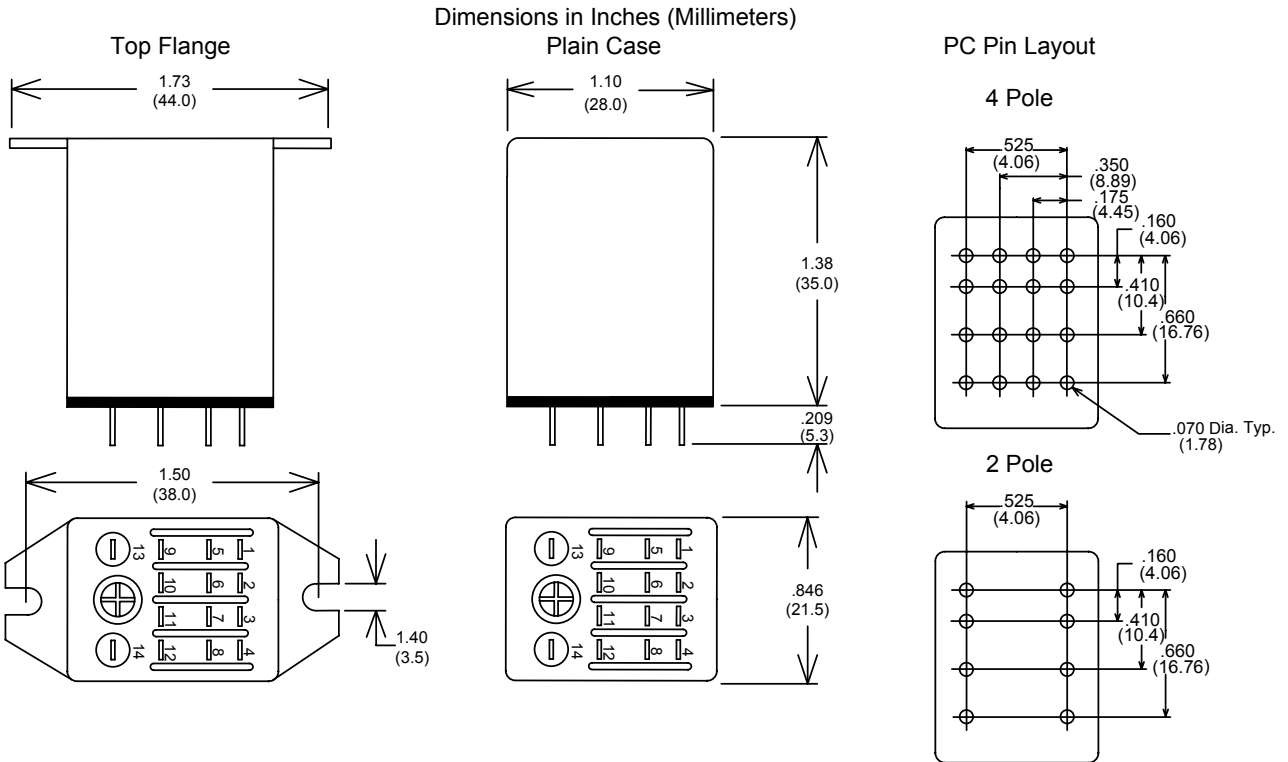
ORDERING INFORMATION

Example: PC118	-4C	-P	-C1	-120A	-LM	-X
Contacts:	2C, 3C or 4C					
Terminal Type						
Nil: Solder Lugs; P: PC Pins						
Case Style						
Nil: Plain Case; C1: Flange Mount Case						
Coil						
XXXA: AC Coil; XXXD: DC Coil						
Options						
D: Internal Diode, L: Indicator light, G: Gold Plated Contacts, M: Push to Test						
RoHS Compliant						
Nil: Not Rohs, -X: RoHS Compliant						

COIL DATA

Voltage Type	Coil Voltage	Resistance ohms $\pm 10\%$	Coil Power	Must Operate Voltage Max.	Must Release Voltage Min.
DC	5	27.5	0.9 W	4.0	0.5
	6	40		4.8	0.6
	12	160		9.6	1.2
	24	650		19.2	2.4
	48	2600		38.4	4.8
	110	11000		88.0	11.0
AC	6	11.5	1.2 VA	4.8	1.8
	12	46.0		9.6	3.6
	24	184		19.2	7.2
	48	735		38.4	14.4
	120	4550		96.0	36.0
	220 / 240	14400		176.0	66.0

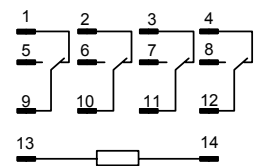
Note: Custom coil voltages within the ranges shown are available on special order.



Wiring Diagram 2 Pole



Wiring Diagram 4 Pole



Tolerances $\pm .010$ unless otherwise noted



3220 Commander Drive, Suite 102, Carrollton, Texas 75006
 Sales: (888)997-3933 Fax: (818) 342-5296 email: sales@pickercomponents.com URL: pickercomponents.com