

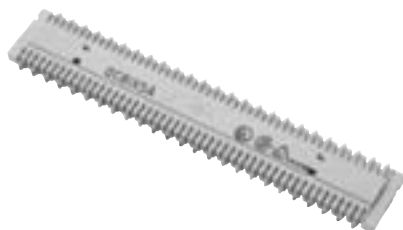
BIX Cross-Connect System

Distribution Connectors, Multiplying Connectors and Modular Jack Connectors

A0393146 QCBIX1A4 Connector



A0266827 QCBIX5A Multiplying Connector



AX100798 BIX Modular Jack Connector



BIX Distribution Connector

The **BIX Distribution Connector** is a 25-pair connector. The connector's symmetrical construction allows termination of cables on one side and cross-connect jumper wires or BIX Patch Cords on the other. Each BIX connector is equipped with 50 double-ended Insulation Displacement Connection (IDC) clips for terminating plastic insulated solid copper conductors without stripping and pair splitters on each side of the connector facilitate wire insertion.

BIX Multiplying Connector

BIX Multiplying Connectors are used to generate multiple outputs from a single input. Construction of these connectors is identical to that of BIX Distribution Connectors, except for the IDC clips which are bridged. BIX Multiplying Connectors are typically used in voice applications.

The QCBIX2A Connector is built using 24 sets of bridged clips (2 clips each). It is used to terminate various facilities where multiples of 2 are required.

The QCBIX5A Connector is built using 10 sets of bridged clips (5 clips each). It is used for multiple jumper connections to the same equipment.

The QCBIX7A Connector is built using 10 sets of bridged clips (four 2-clip and six 7-clip bridged arrangements). It is primarily intended for use with 1A type key telephone systems. Each connector can terminate up to three lines of key equipment providing service to as many as seven key telephone sets per line.

BIX Modular Jack Connector

BIX Modular Jack Connectors provide a fast and flexible method to manage small-to-medium cross-connect installations. These connectors are built with a BIX connector pre-wired to standard modular jacks. They allow front-access termination and patching.

The NXXCBMC6U Connector is a 6-port, 8-position modular connector used for data applications. It exceeds all Category 5e channel requirements when used with PS5E Modular Cords in a Belden IBDN 1200 System.

QCBIX36-type Connectors are used mostly for voice applications. The QCBIX36D connector is a 6-port, 8-position modular connector. It is pre-wired to USOC 8-wire wiring scheme specifications. The QCBIX36C connector is an 8-port, 6-position modular connector. It is pre-wired to USOC 6-wire wiring scheme specifications. The QCBIX36B connector is a 12-port, 6-position modular connector. It is pre-wired to USOC 4-wire wiring scheme specifications.

Description	Belden Part Number
-------------	--------------------

BIX Cross-Connect System

Distribution Connector

BIX Distribution Connector, 5-pair Marking	A0266828
BIX Distribution Connector, 4-pair Marking	A0393146

Multiplying Connector

BIX Multiplying Connector, QCBIX2A, 25-pair, 12x2-pair	A0269923
BIX Multiplying Connector, QCBIX5A, 25-pair, 5x5-pair	A0266827
BIX Multiplying Connector, QCBIX7A, 25-pair, 2x2-pair & 3x7-pair	A0269925

Modular Jack Connector

BIX Modular Jack Connector, NXXCBMC6U, 6-port, PS5E, T568A/B Coded	AX100798
BIX Modular Jack Connector, QCBIX36D, 6-port, USOC, 8-pin	A0341173
BIX Modular Jack Connector, QCBIX36C, 8-port, USOC, 6-pin	A0330864
BIX Modular Jack Connector, QCBIX36B, 12-port, USOC, 4-pin	A0330863

These products are in the process of being assessed for RoHS compliance. Please check our Web Site for the most current RoHS status.

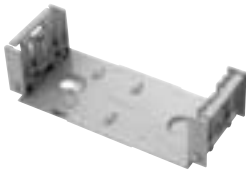
BIX Cross-Connect System

Mounts, Covers and Wire Management Accessories

A0340836 QMBIX12E BIX Mount, 300-pair



A0284798 QMBIX10C BIX Mount, 50-pair



A0277853 QMBIX31A 50-pair Mount with Locking Cover



A0285986 Locking Cover for 250-pair Mount



A0276396 BIX Cover, QMBIX10A, Stand-alone installation, Locking



A0270168 Distribution Ring



BIX Mount

BIX Mounts are basic components used in building a cross-connect system. They can accept BIX Distribution, Multiplying or Modular Jack Connectors. The 300 and 250-pair mounts can be wall-mounted or installed on BIX Frames. These mounts feature an interlocking design allowing them to be stacked for larger cross-connect installations.

The **BIX 50-pair Mount** is typically used in small cross-connect installations. Also available is a 50-pair mount with cover that is sold as an assembly and is typically used in small cross-connect installations where security and/or dust protection is required.

BIX Cover

BIX Covers can be used to restrict access of cross-connect installations for better protection and security. Two sizes are available to suit either the QMBIX12E 300-pair mount or the QMBIX10A 250-pair mount. The two locking covers used in wall or frame-mounted installations are molded with translucent plastic allowing visual inspection. Also available are two covers used exclusively in stand-alone QMBIX10A 250-pair mount installations: one locking, the other non-locking—both have four cable entries, one at each corner.

Distribution Ring

The **Distribution Ring** is used in wall mount installations providing a cross-connect channel for jumper wires, patch cords and cables. The Distribution Ring interlocks with the QMBIX12E or QMBIX10A mounts, providing proper spacing and alignment.

Description	Belden Part Number
BIX Cross-Connect System	
BIX Mount	
BIX Mount, QMBIX12E (300-pair)	A0340836
BIX Mount, QMBIX10A (250-pair)	A0270164
BIX Mount, QMBIX10C (50-pair)	A0284798
BIX Mount with Cover	
BIX Mount with Cover, (Locking), 50-pair	A0277853
BIX Mount with Cover, (Snap-on), 50-pair	A0277854
BIX Locking Cover	
BIX Locking Cover, for QMBIX12E (300-pair)	A0340838
BIX Locking Cover, for QMBIX10A (250-pair)	A0285986
BIX Cover	
BIX Cover, QMBIX10A, Stand-alone installation, locking	A0276396
BIX Cover, QMBIX10A, Stand-alone installation, non-locking	A0276394
Distribution Ring	
Distribution Ring	A0270168

These products are in the process of being assessed for RoHS compliance. Please check our Web Site for the most current RoHS status.

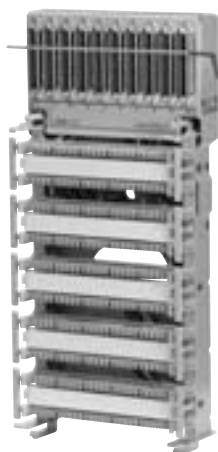
BIX Cross-Connect System

BIX Distribution Frames, Universal BIX-PAC and Trunk Access Blocks

A0340837 BIX Frame



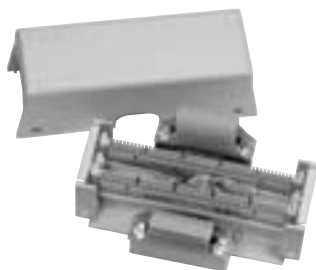
A0321776 Universal BIX-PAC Version 10-10



A0318897 BIX PAC Enclosure



A0327326 BIX Trunk Access Block



BIX Distribution Frame

BIX Distribution Frames provide a compact mounting unit for large cross-connect installations. The QFBIX24E BIX Frame can accommodate up to 16 QMBIX12E 300-pair mounts, eight on the vertical side and eight on the horizontal side. The QFBIX24E BIX Frame has a capacity of 4800-pair. The QFBIX24A BIX Frame can accommodate up to 16 QMBIX10A 250-pair mounts, eight on the vertical side and eight on the horizontal side. The QFBIX24A BIX Frame has a capacity of 4000-pair.

The BIX Frame End Kit consists of eight cable trays and eight distribution rings plus appropriate mounting hardware. One kit is required to support cross-connect wires on the sides of the shelves in a single-frame installation or on the end frames of a multi-frame installation.

The Distribution Rings are plastic rings used to manage cross-connect wires.

Universal BIX-PAC

The Universal BIX-PAC provides a fast, factory-wired, pre-tested and easy-to-install method of terminating wiring for the voice environment. A typical application for this product is in the main distribution terminal system or the riser terminal system, where it can provide connectivity and cross-connection for up to 250 pairs. The units come equipped with up to 10 QCBIX1A Connectors and 10 fifty-pin type telco connectors for the termination of connectorized cables. Also available is a BIX-PAC Enclosure, which is a fire-retardant polystyrene structural foam box that can house one BIX-PAC. The enclosure has a snap-on cover and removable panels for cable entry on top, bottom and sides.

BIX Trunk Access Block

BIX Trunk Access Blocks provide a fast, factory-wired, pre-tested and easy-to-install method for demarcation or testing points on customer premises. Typical applications are in the building entrance system or the main distribution terminal system, where the demarcation point between the network provider and the customer equipment usually can be found.

Description	Belden Part Number
BIX Cross-Connect System	
BIX Distribution Frame	
BIX Distribution Frame, 4800-pair (4 Shelves for 16 Mounts, 300-pair)	A0340837
BIX Distribution Frame, 4000-pair (4 Shelves for 16 Mounts, 250-pair)	A0275511
BIX Distribution Frame Accessories	
BIX Distribution Frame Accessories, End Kit (4 Shelves)	A0275512*
BIX Distribution Frame Accessories, Distribution Ring	P0596540*
Universal BIX-PAC	
Universal BIX-PAC, 10-8, 8 RJ21X Female to 8 QCBIX1A Connectors	A0321775
Universal BIX-PAC, 10-10, 10 RJ21X Female to 10 QCBIX1A Connectors	A0321776
BIX PAC Enclosure	
BIX PAC Enclosure, Gray	A0318897
BIX Trunk Access Block	
BIX Trunk Access Block, 1 RJ21X Female to 1 QCBIX1A Connector	A0327325
BIX Trunk Access Block, 2 RJ21X Female to 2 QCBIX1A Connector	A0327326

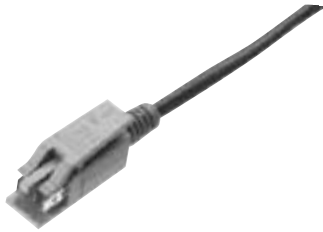
*Eight Distribution Rings come as part of the BIX Distribution Frame End Kit. Additional Distribution Rings can be ordered separately. Use (1) end kit per row of frames.

These products are in the process of being assessed for RoHS compliance. Please check our Web Site for the most current RoHS status.

BIX Cross-Connect System

BIX Patch Cords and B-Plus Cross-Connect Wire

A0410494 BIX Patch Cord, BIX-BIX, 2-pair



A0410469 BIX Patch Cord, BIX-BIX, 1-pair



22208260 B-Plus Cross-Connect Wire



BIX Patch Cords

BIX Patch Cords allow for high-density connections, coupled with flexibility for cost-effective installation and administration. Installation and rearrangement of patch cords do not require any special tools or training. BIX Patch Cord plugs terminate directly into QCBIX1A/1A4 connectors.

B-Plus Cross-Connect Wire

B-Plus Cross-Connect Wire is intended primarily for use between incoming cables and station equipment in a Telecommunications Room or at a Main Cross-Connect.

Z Cross-Connect Wire is intended primarily for use in voice applications such as cross-connecting PBX or Key Telephone system equipment to backbone or horizontal distribution cables.

Description	Belden Part Number
-------------	--------------------

BIX Cross-Connect System

BIX Patch Cord	
BIX Patch Cord, BIX-BIX, 2-pair, 1.2 m (4 ft.)	A0410494
BIX Patch Cord, BIX-BIX, 1-pair, 1.2 m (4 ft.)	A0410469
BIX Patch Cord, BIX-BIX, 2-pair, 2.1 m (7 ft.)	A0410495
BIX Patch Cord, BIX-BIX, 1-pair, 2.1 m (7 ft.)	A0410471
BIX Patch Cord, BIX-BIX, 2-pair, 3.0 m (10 ft.)	A0410496
BIX Patch Cord, BIX-BIX, 1-pair, 3.0 m (10 ft.)	A0410473
BIX Patch Cord, BIX-BIX, 2-pair, 4.6 m (15 ft.)	A0410497
BIX Patch Cord, BIX-BIX, 1-pair, 4.6 m (15 ft.)	A0410475
BIX Patch Cord, BIX-BIX, 1-pair, 7.6 m (25 ft.)	A0410493

For 4-pair connections, please see the GigaBIX Patch Cord section.

B-Plus Cross-Connect Wire	
24 AWG, 1-pair, Wh/Bl, 305 m (1000 ft.), K-Carton	22208250
24 AWG, 1-pair, Wh/Bl, 305 m (1000 ft.), Spool (S77)	22208253
24 AWG, 2-pair, Wh/Bl/Wh/Or, 305 m (1000 ft.), K-Carton	22208260
24 AWG, 2-pair, Wh/Gr/Wh/Or, 305 m (1000 ft.), K-Carton	22208231
24 AWG, 3-pair, Wh/Bl/Wh/Or/Wh/Gr, 152 m (500 ft.), K-Carton	22208265
24 AWG, 3-pair, Wh/Bl/Wh/Or/Wh/Gr, 200 m, K-Carton	22208235
24 AWG, 4-pair, Wh/Bl/Wh/Or/Wh/Gr/Wh/Br, 152 m (500 ft.), K-Carton	22208270

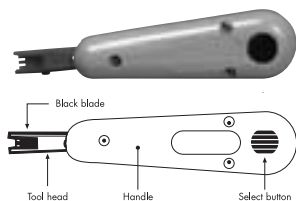
Z Cross-Connect Wire	
Z Cross-Connect Wire, 24 AWG, 1-pair, Bl/Ye, 300 m (984 ft.), Spool	22208010
Z Cross-Connect Wire, 24 AWG, 1-pair, Bl/Rd, 300 m (984 ft.), Spool	22208067

These products are in the process of being assessed for RoHS compliance. Please check our Web Site for the most current RoHS status.

BIX Cross-Connect System

BIX Tools, Testing Tools, Accessories and Designation Strip

A0270165 BIX Connecting Tool



Tool in CUT position Tool in NO CUT position



C0054642 Tool Pouch



A0270166 BIX Test Probe



A0270172 Special Service Guard



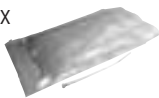
A0325493 Bridging Clip



P0660798 BIX Wire Retainer



C0039222 BIX Cable Tie



A0352331 19 in. Rack Bracket Kit



A0270169 BIX Designation Strip



BIX Connecting Tool

The **BIX Connecting Tool** is the only tool required to terminate cables, pigtails or jumper wires on all GigaBIX and BIX connection products. The BIX Connecting Tool is a spring-activated hand tool. A single forward movement will seat the wire into the BIX IDC clip and cut off the excess wire. The tool will terminate 22-26-AWG plastic insulated solid copper conductors. A separate leather BIX Tool Pouch to carry and protect the BIX Tool can be ordered.

BIX Test Probe

The **BIX Test Probe** is a single-pair probe that clips onto the termination clip of BIX Distribution or BIX Modular Jack Connectors to facilitate testing.

BIX Accessories

The **BIX Special Service Guard** is a single-pair red plastic clip used to identify a connection within a BIX distribution field that requires special attention prior to any maintenance work.

The **BIX Bridging Clip** is a single-pair clip used to bridge single-pair connections of two BIX connectors.

The **BIX Wire Retainer** is a plastic extrusion that fits over the terminated wires on a BIX Connector to prevent them from being pulled out of the IDC contacts. It can be used to secure a permanent connection on either side of a BIX Connector.

This **19 in. Rack Bracket Kit** provides the hardware for BIX Mount installation into a 19 in. rack. This kit comes complete with two mounting bars, four screws for rack mounting, four screws for BIX Mount assemblies and an installation guide.

BIX Cable Ties are used for securing wire bundles to the BIX Connector.

BIX Designation Strip

The **BIX Designation Strip** is designed to be used in conjunction with all BIX Mounts and BIX Connectors. It snaps in between two connectors and provides space for self adhesive BIX labels. The strip is made of white fire-retardant plastic, with ridges on the top and bottom for easy alignment and placement of designation labels. (See the LabelFlex section for designation labels.)

Description	Belden Part Number
BIX Cross-Connect System	
BIX Tools	
BIX Connecting Tool	A0270165
Tool Pouch	C0054642
BIX Test Probe	
BIX Test Probe, 1-pair, 1/pack	A0270166
BIX Accessories	
BIX Special Service Guard, 1-pair, Red, 50/pack	A0270172
BIX Bridging Clip, 1-pair, Gray, 50/pack	A0325091
BIX Bridging Clip, 1-pair, White, 50/pack	A0325493
BIX Wire Retainer, 100/pack	P0660798
19 in. Rack Bracket Kit, 2 bars/pack	A0352331
BIX Cable Tie, 100/pack	C0039222
BIX Designation Strip	
BIX Designation Strip, White, 50/pack	A0270169

These products are in the process of being assessed for RoHS compliance. Please check our Web Site for the most current RoHS status.

Mouser Electronics

Authorized Distributor

Click to View Pricing, Inventory, Delivery & Lifecycle Information:

[Belden Wire & Cable:](#)

[A0266828](#) [A0270164](#) [A0270166](#) [A0270169](#) [A0393146](#)