



TAI-SAW TECHNOLOGY CO., LTD.

No. 3, Industrial 2nd Rd., Ping-Chen Industrial District,
Taoyuan, 324, Taiwan, R.O.C.

TEL: 886-3-4690038 FAX: 886-3-4697532

E-mail: tstsales@mail.taisaw.com Web: www.taisaw.com

Product Specifications Approval Sheet


Product Description: SAW Resonator 423.22 MHz SMD 5.0X3.5 mm

TST Part No.: TC0553A

Customer Part No.: _____

Customer signature required
Company: _____
Division: _____
Approved by : _____
Date: _____

Checked by: Jimmy Han 

Approved by: Francis Chen 

Date: 2011/03/21

1. Customer signed back is required before TST can proceed with sample build and receive orders.
2. Orders received without customer signed back will be regarded as agreement on the specifications.
3. Any specifications changes must be approved upon by both parties and a new revision of specifications shall be released to reflect the changes.



TAI-SAW TECHNOLOGY CO., LTD.

No. 3, Industrial 2nd Rd., Ping-Chen Industrial District,
Taoyuan, 324, Taiwan, R.O.C.

TEL: 886-3-4690038 FAX: 886-3-4697532

E-mail: tstsales@mail.taisaw.com Web: www.taisaw.com

SAW Resonator 423.22 MHz

MODEL NO.: TC0553A

REV. NO.:1

A. FEATURES:

- 1-Port Resonator.

B. MAXIMUM RATING:

1. Input Power Level: 0 dBm
2. DC voltage: 12 V
3. Operating Temperature: -40°C to +85°C
4. Storage Temperature: -40°C to +85°C

C. ELECTRICAL CHARACTERISTICS:

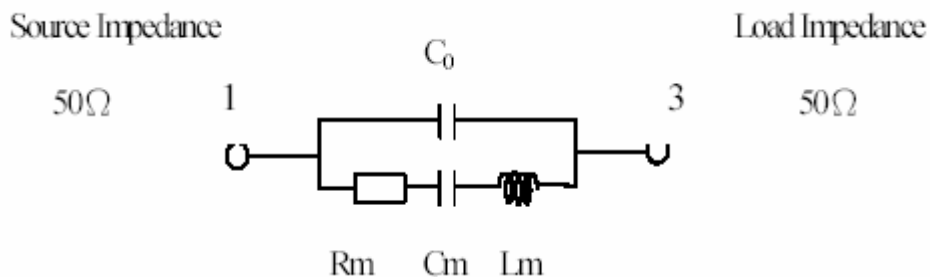
Reference Temperature $T_A=25^\circ\text{C}$

Characteristic	Units	Minimum	Typical	Maximum
Center frequency Fc	MHz	423.145	423.220	423.295
Insertion Loss IL	dB	-	1.2	1.7
Ageing of fc	ppm/yr	-	-	±10
Equivalent Circuit Model				
Motional capacitance C1	fF	-	2.2	-
Motional inductance L1	μH	-	65.6	-
Motional resistance R1	Ohm	-	11.4	23
Parallel capacitance Co	pF	-	3.6	-
Frequency Temperature coefficient (TC_f)	ppm/c*2	-	0.032	-
Turnover T_o	deg.C	-	50	-
Package size	mm	SMD 5.0X3.5X1.4mm		

Temperature dependence of fc: $f_c(T_A)=f_c(T_O)(1+TC_f(T_A-T_O)^2)$

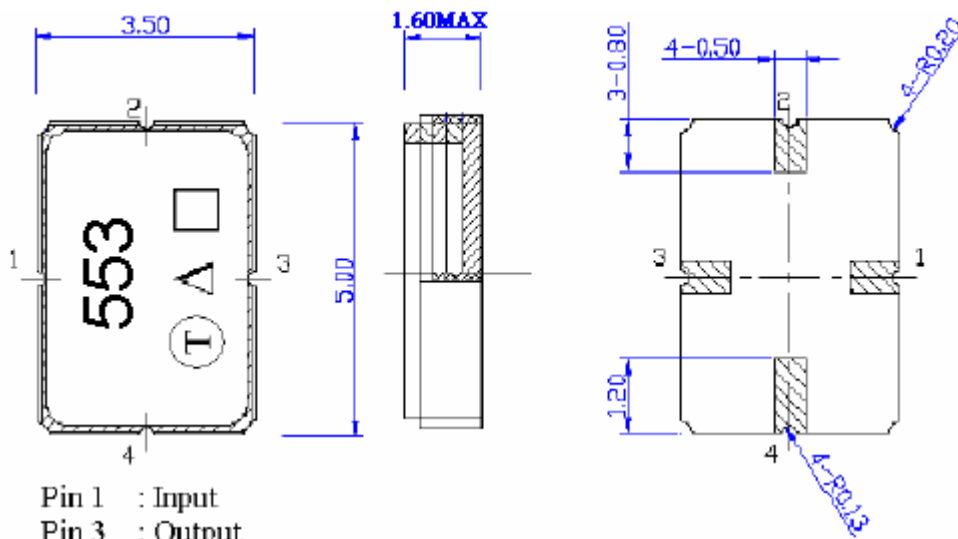
D. EQUIVIRENT CIRCUIT:

One-Port Resonator:



RoHS Compliant
Lead free
Lead-free soldering

E. OUTLINE DRAWING:



Pin 1 : Input
 Pin 3 : Output
 Pin 2,4 : Ground

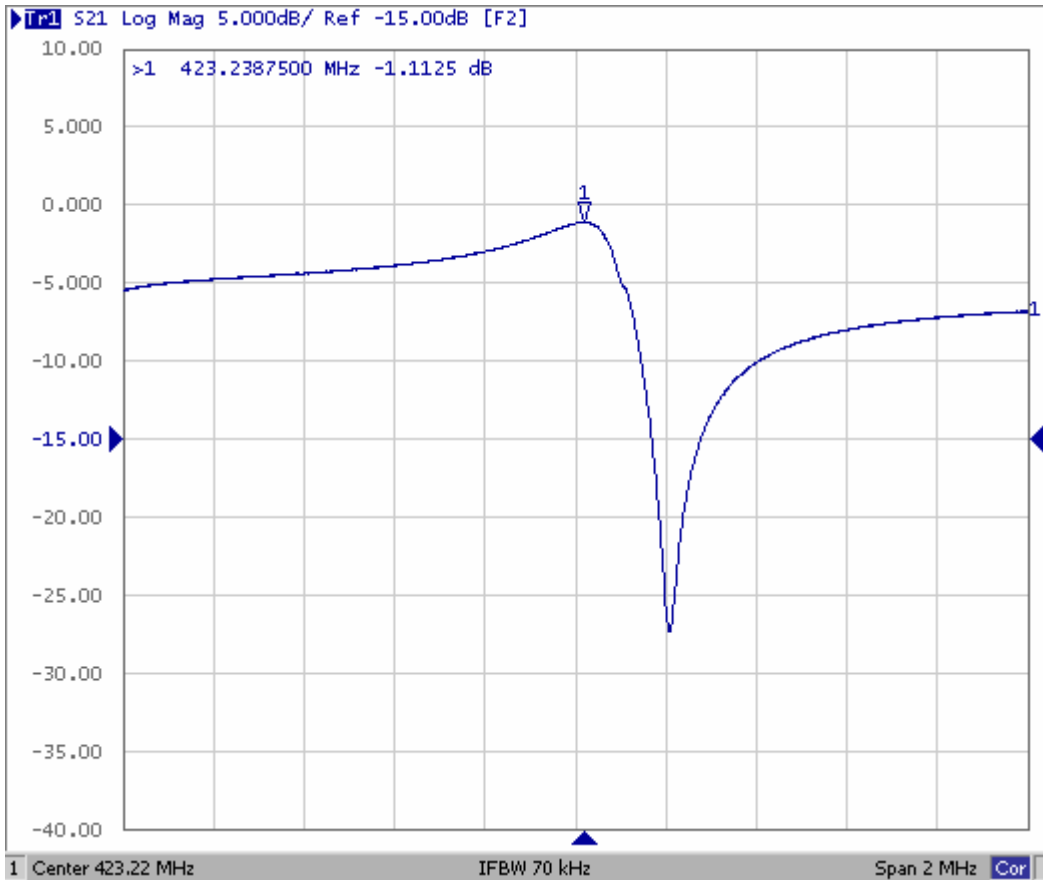
△ Year code

□ Week code(Follow Provided by planer each year)the table

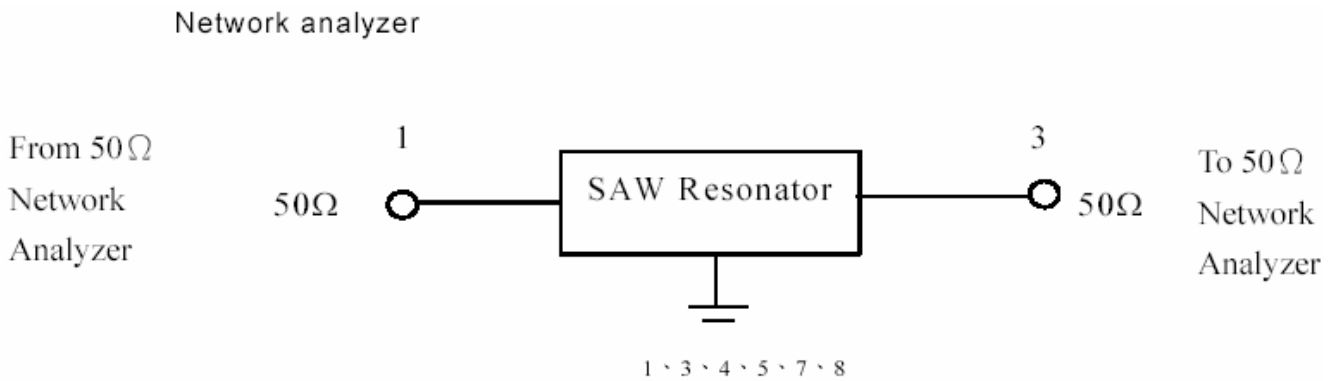
Year code	2005	2006	2007	2008
	2009	2010	2011	2012
	C	c	<u>C</u>	<u>c</u>

week code	1	2	...	26	27	28	...	52
	a	b	...	Z	a	b	...	z

F.FREQUENCY CHARACTERISTICS:

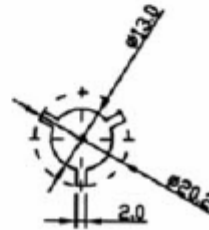
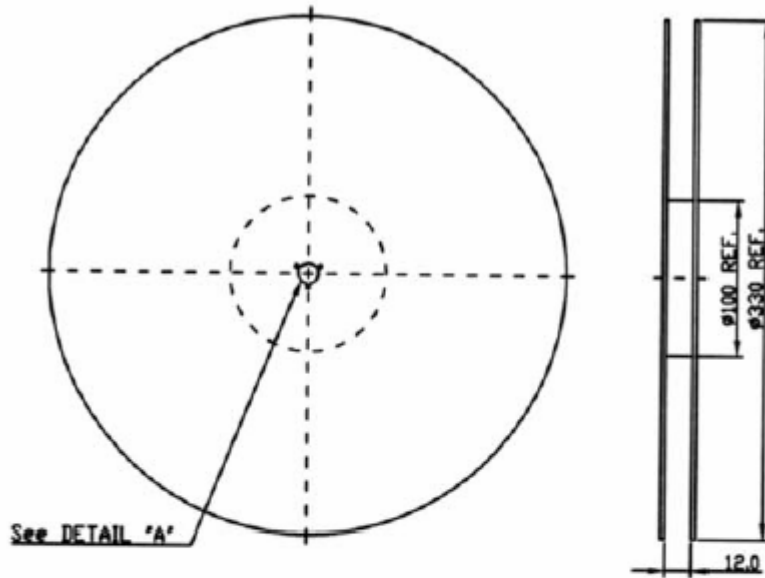


G. TEST CIRCUIT:



H. PACKING:

1. REEL DIMENSION



2. TAPE DIMENSION

