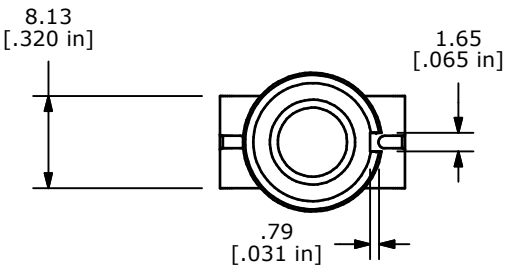
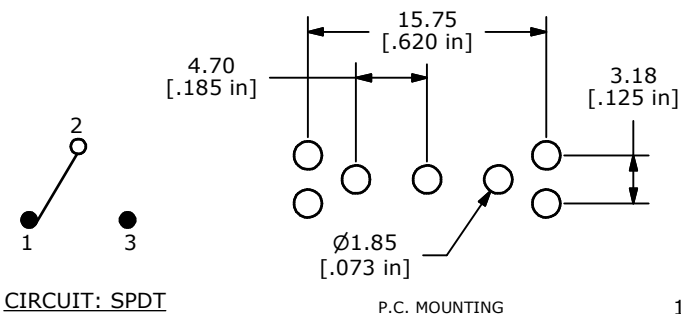
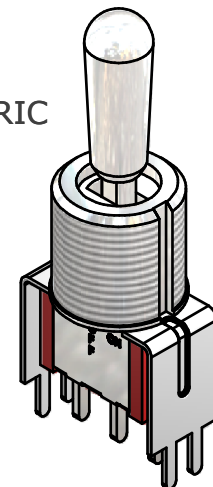


| SWITCH FUNCTION | | |
|-----------------|--------|--------|
| POS. 1 | POS. 2 | POS. 3 |
| | | |
| ON | OFF | ON |
| 2-3 | OPEN | 2-1 |



ISOMETRIC

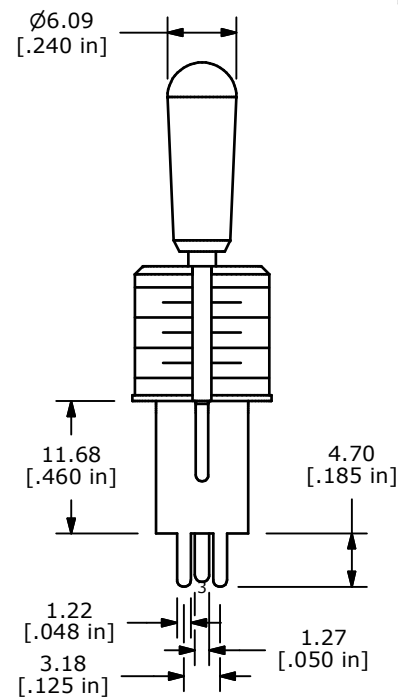
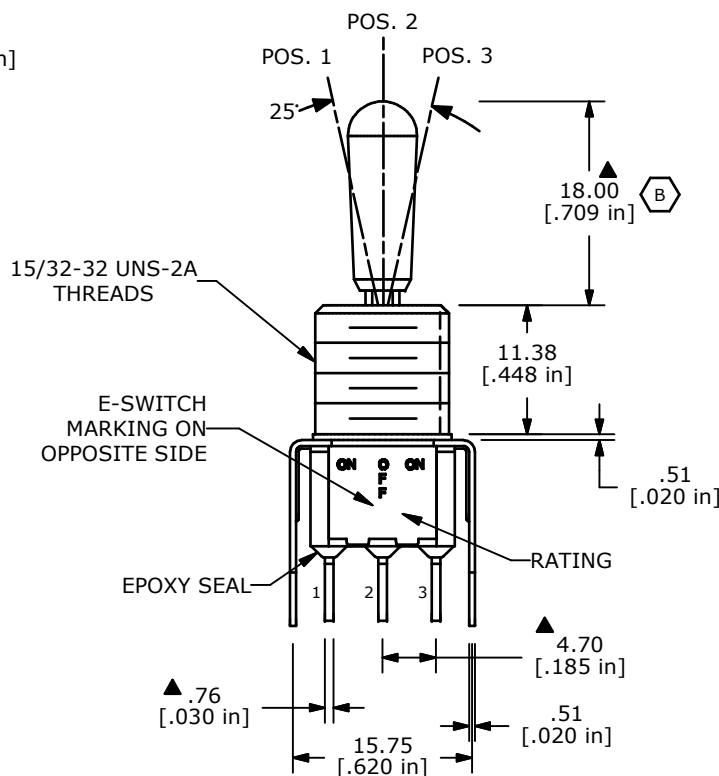


CIRCUIT: SPDT

P.C. MOUNTING

NOTE:

1. ALL DIMENSIONS IN MM [INCH]
2. GENERAL TOLERANCE: X.X=±0.4
X.XX=±0.25
3. TERMINAL NUMBERS FOR REF ONLY
- ▲4. CONTACT MATERIAL: GOLD
5. RATING: 0.4 (VA) Max. @ 20V (AC or DC)
6. ELECTRIC LIFE: 40,000 MAKE-AND-BREAK CYCLES AT FULL LOAD.
7. INSULATION RESISTANCE: 1,000 MEGA-OHM MIN.
8. DIELECTRIC STRENGTH: 1,000 V RMS @SEA LEVEL.
9. OPERATING TEMP.: -30°C to 85°C
- ▲ DENOTES CRITICAL PARAMETER.
11. 2002/95/EC (ROHS) COMPLIANT
12. HARDWARE TO BE SHIPPED BULK
T100004 - HEXNUT - QTY 2
T100012 - LOCKWASHER - QTY 1
T100003 - LOCKRING - QTY 1



| | | | | |
|-----|--------|--------------------------------|---------|-----|
| B | 19003 | REVISE DIM FOR ACTUATOR HEIGHT | 4/7/10 | BLR |
| A | 17981 | RELEASED FOR PRODUCTION | 2/25/08 | BLR |
| REV | PCR NO | DESCRIPTION | DATE | BY |

| | | | | |
|-------------------------|---------------|--------|--------------|-------|
| TITLE 100SP3T8B13VS2REH | | | | |
| SCALE 2:1 | DATE 4/7/2010 | DR BLR | DWG ST113059 | REV B |

THE INFORMATION CONTAINED IN THIS DOCUMENT IS PROPRIETARY TO E-SWITCH AND IS NOT TO BE COPIED OR TRANSFERRED