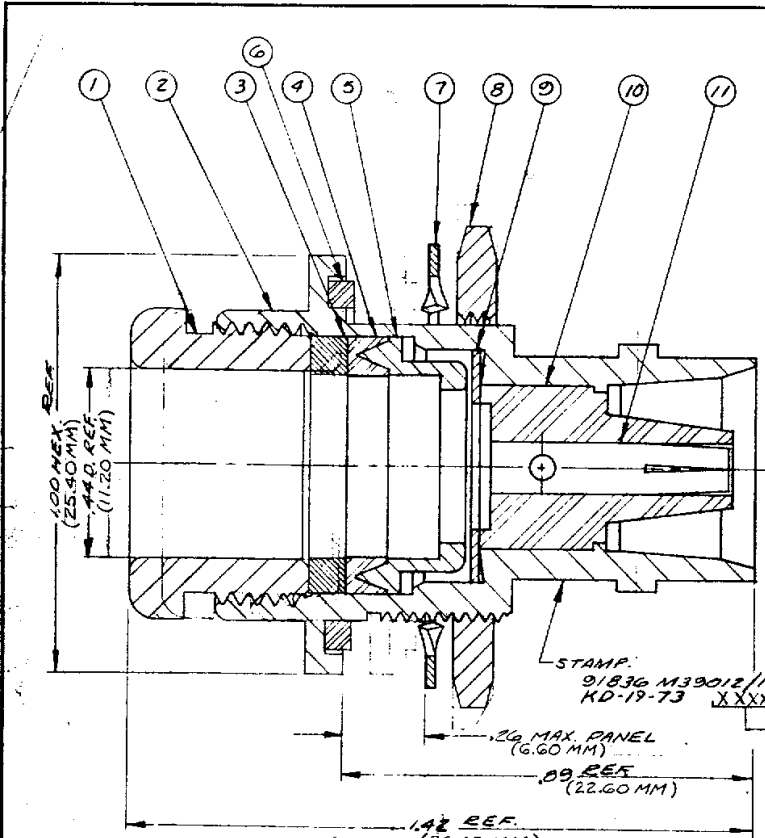
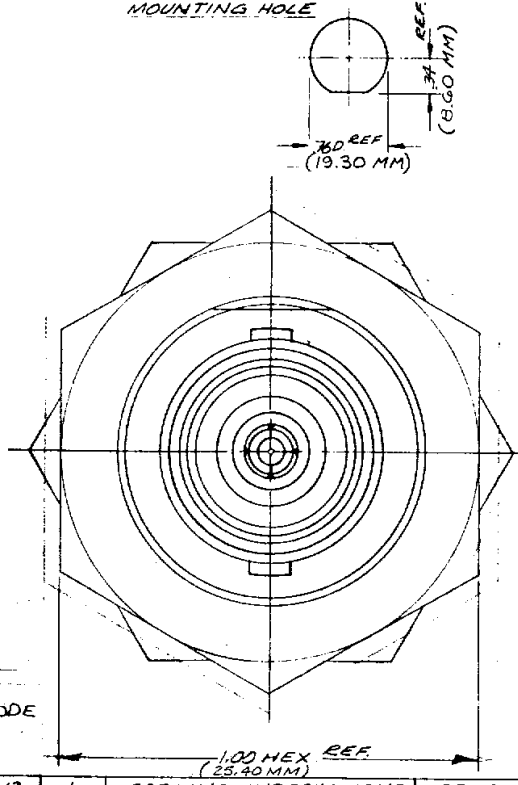


S-D



NOTES:
 1. FOR USE WITH RG-8, 9, 213 & 214 CABLE GROUPS.
 2. FOR CABLING INSTRUCTIONS SEE CP-1022.

MOUNTING HOLE



M39012/11-0002

REVISIONS	
ISSUE	CHANGES
0	ER 6239 7 AUG 68 HFE
1	CN 9452A HLA 9 MAR 71
2	CN 13699A WD 6 AUG 74
3	CN 15185C JL 15 DEC 75
4	CN 16669C MJB 23 DEC 76
5	CN 23169 E GL 15 APR 82
6	CN 32263 A LNM 7 JUN 90

S-D

KD-19-73

ITEM	REQ'D	DESCRIPTION	DRAWING NO.
12	1	CABLING INSTRUCTIONS	573C-1
11	1	C CONTACT F	1-782 5-MSD
10	1	INSULATOR	
9	1	WASHER	
8	1	HEX NUT	570-2-MCT
7	1	LOCKWASHER	6-79-01-4-MCT
6	1	GASKET	570-3-M99
5	1	BRAID CLAMP	571-2-MCT
4	1	GASKET	571-3-M99
3	1	WASHER	1-1370-MCT
2	1	BODY	
1	1	CLAMP NUT	571-1-MCT

REF:	SUPERSEDES UG-570A/U
FINISH	
SPEC.	
MATL.	
SPEC.	
C BULKHEAD JACK	
DRAWN HFE	DATE 6 AUG 68
APPR. LT	DATE 7 AUG 68
KINGS ELECTRONICS 40 MARBLEDALE ROAD TUCKAHOE, N. Y. 10707	
M39012/11-0002	

UNLESS OTHERWISE SPECIFIED

- | | |
|---|--|
| 1. TOLERANCES
FRACTIONS ± .010 DECIMALS ± .004 ANGLES ± 0° 30' | 2. REMOVE ALL BURRS. BREAK SHARP EDGES .005 MAX. |
| T. I. R. CONCENTRICITY OF ANY 2 DIAMETERS MAY NOT EXCEED THE SUM OF THEIR TOLERANCES. | 3. NO FILLETS PERMITTED. |
| | 4. SURFACE ROUGHNESS 83 MICRONS RMS MAX. |
| | 5. ALL DIMENSIONS PRIOR TO PLATING. |

S-D