

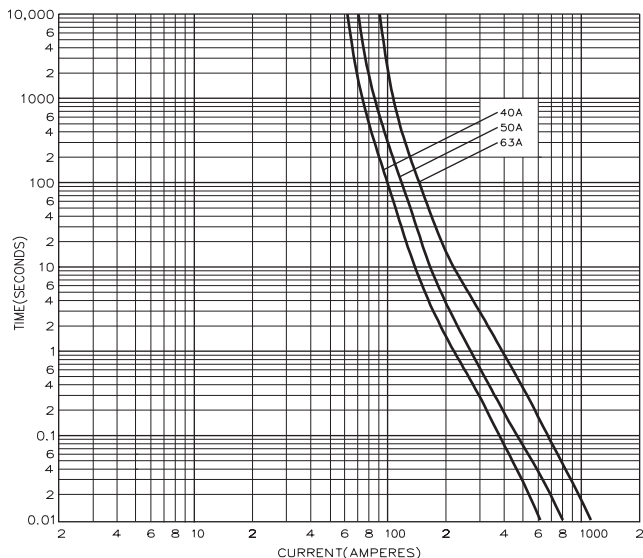
# BS88, IEC269 Industrial HRC Fuse Links

## Centre Bolted Tags 550V ac 250V dc

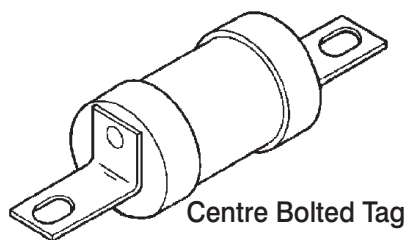
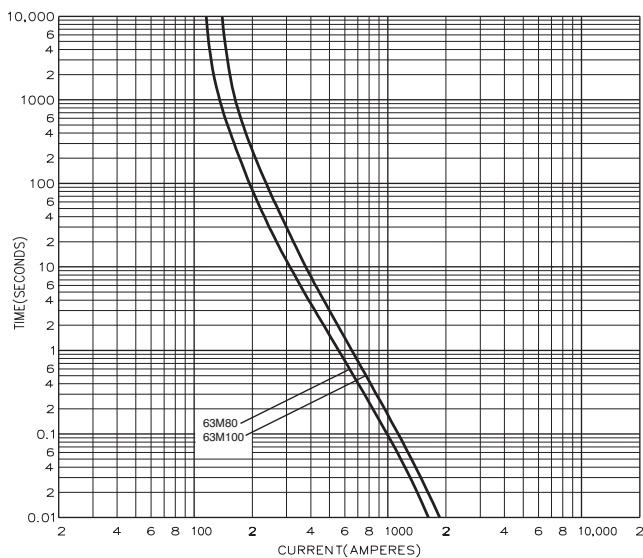
BC

### Time-Current Characteristic Curves

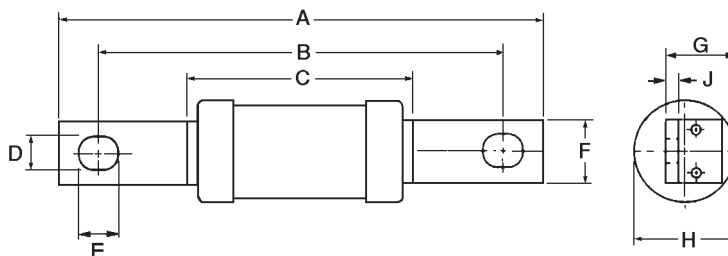
Non Motor Rated



Motor Rated



Dimensional Data



Catalog' Number	I²t (Amps² Seconds)			Nom. Watts Loss	Rated Voltage	Dimensions (mm)								
	Amp Ratings	Pre-Arcing	Total at 415V			A	B	C	D	E	F	G	H	J
BC40	40	1400	3600	4.7	550 ac 250 dc	113.5	97.5	55.5	12.7	13.5	7.0	11.2	21.0	1.6
BC50	50	3000	8000	4.9										
BC63	63	6700	18,800	5.6										
BC63M80	63M80	12,600	33,900	4.4	550 ac	113.5	97.5	55.5	12.7	13.5	7.0	11.2	21.0	1.6
BC63100	63M100	24,000	72,900	3.4										

Packaging - 20 per carton

This bulletin is intended to clearly present comprehensive product data and provide technical information that will help the end user with design applications. Bussmann reserves the right, without notice, to change design or construction of any products and to discontinue or limit distribution of any products. Bussmann also reserves the right to change or update, without notice, any technical information contained in this bulletin. Once a product has been selected, it should be tested by the user in all possible applications.

**Bussmann Division**  
**Cooper (U.K.) Ltd**  
 Burton-on-the-Wolds  
 Leicestershire, LE12 5TH  
 United Kingdom  
 Tel: (44) (0)1509 88 27 37  
 Fax: (44) (0)1509 88 27 86

Head Office  
 St. Louis, MO, U.S.A. Tel: (314) 527-3877 Fax: (800) 544-2570 International Fax: (314) 527-1445



Bussmann Information Fax (00 1) 314 527 1450  
 Bussmann WEB site - <http://www.bussmann.com>