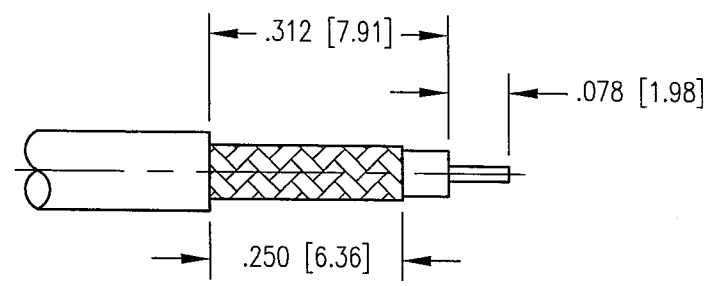
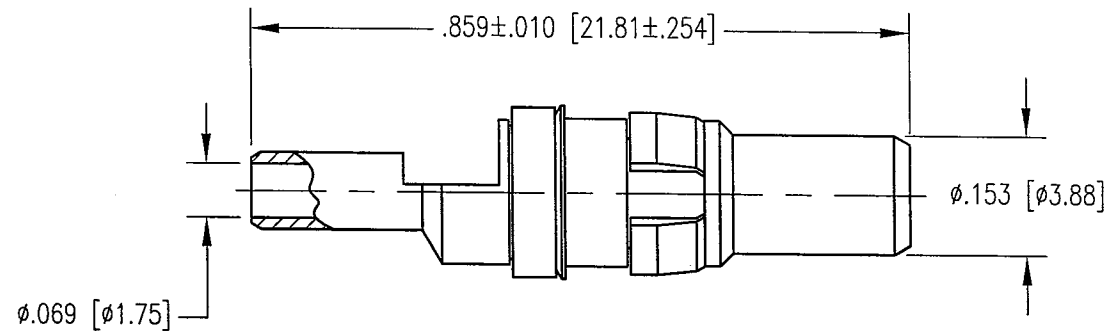
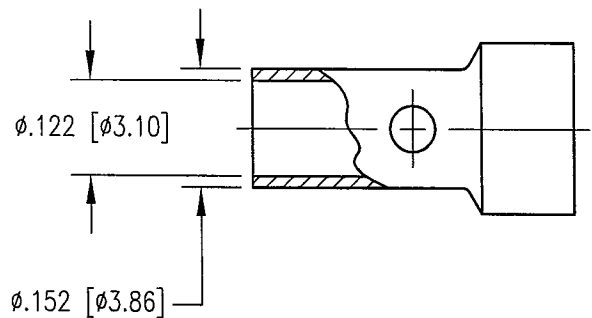


DWG. NO. 200-510-0630H

REV	DESCRIPTION	BY DATE	APPD
C	ECR 7248	JWH 2/06/02	JWH



CABLE TRIMMING DIMENSIONS

NOTES:

- MATERIALS:
 CONTACT: COPPER ALLOY
 INSULATOR: TEFLON PER ASTM D1710
 CLIP RING: BERYLLIUM COPPER PER ASTM B194
 SPRING WASHER: PHOSPHOR BRONZE PER ASTM B103
 ALL OTHER METAL PARTS: BRASS PER ASTM B16
- FINISH:
 BODY AND CONTACT: .000050 MIN. GOLD PER MIL-G-45204 OVER
 .000100 MIN. COPPER PER MIL-C-14550
 CLIP RING: .000100 MIN. NICKEL PER QQ-N-290 OVER
 COPPER FLASH
 FERRULE AND SPRING WASHER: .000005 MIN. GOLD PER MIL-G-45204 OVER
 .000050 MIN. NICKEL PER QQ-N-290
- FOR USE WITH RG-316 CABLE OR EQUIVALENT
- FOR CABLING PROCEDURE USE CAP 5-07 WITH TRIMMING DIMENSIONS SHOWN.

PER ASME Y14.5M-1994 UNLESS OTHERWISE SPECIFIED: DIMENSIONS ARE IN INCHES [MM]		NORTHROP GRUMMAN	
TOLERANCES: DECIMALS .XX ± .01 [0.254] .XXX ± .005 [0.127] ANGLES ± 2°		Winchester Electronics 400 Park Road Watertown, CT 06795	
CUSTOMER DRAWING		TITLE RDM STRAIGHT PLUG	
DRAWN JWH	DATE 2/06/02	CHECKED R. J. [Signature]	DATE 2/14/02
APPROVED [Signature]	DATE 2/14/02	APPROVED [Signature]	DATE 2/14/02
A		200-510-0630H	SHT. 1 OF 1 REV. C