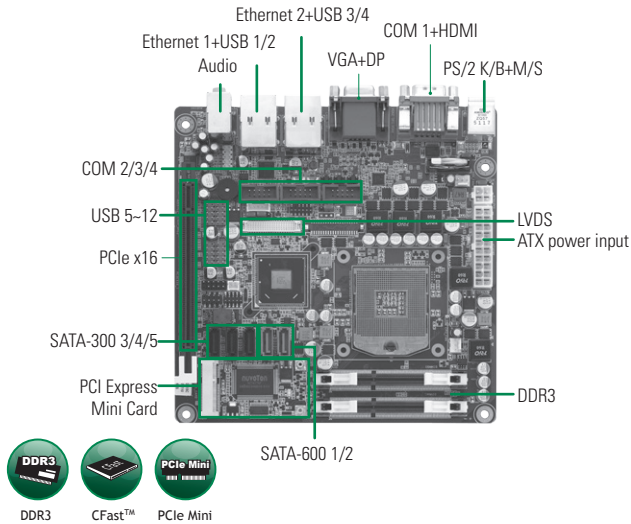


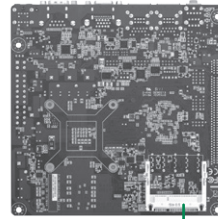
MANO860

Socket G2 Intel® Quad/Dual Core™ i7/ i5/ i3/ Celeron® Mini ITX SBC with Intel® QM67 PCH, DisplayPort/HDMI/VGA/LVDS, SATA-600, Dual LANs and RAID



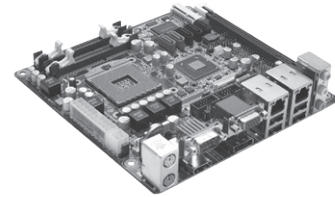
Features

- Socket G2 (rPGA 988B) 2nd Generation Intel® Quad/ Dual Core™ i7/i5/ i3/ Celeron® processors
- 2 DDR3-1066/1333 MHz, max. up to 16 GB
- PCIe x16 Gen. 2 supported
- SATA-600 with RAID 0/1/5/10 supported
- CFast™ supported
- iAMT supported
- TPM supported
- Display: DisplayPort/HDMI/VGA/LVDS



▲ Rear view

CFast



▲ Side view

System

| | |
|---------------------|---|
| CPU | Socket G2 (rPGA 988B) for 2nd Generation Intel® Core™ i7/ i5/ i3/ Celeron® processors |
| System Memory | 2 x 204-pin SO-DIMM support DDR3-1066/1333 max. up to 16 GB |
| Chipset | Intel® QM67 PCH |
| BIOS | AMI UEFI BIOS |
| SSD | 1 x CFast™ |
| Watchdog Timer | 255 levels, 1~255 sec. |
| Expansion Interface | 1 x PCIe x16 Gen. 2 1 x PCI Express Mini Card |
| Battery | Lithium 3 V/ 220 mAh |
| Power Requirements | +12V @ 4.86A, +5V @ 1.28A, +3.3V @ 1.05A, +5VSB @ 0.36A, -12V @ 0.41A |
| Size | 170 x 170 mm |
| Board Thickness | 1.6 mm |
| Temperature | 0° ~ +60°C (32°F ~ 140°F), operation |
| Operation Humidity | 10% ~ 95% relative humidity, non-condensing |

Display

| | |
|-------------------|---|
| Chipset | Intel® HD Graphics 2000/3000 |
| Memory Size | 1.7 GB |
| Display Interface | 1 x DP 1 x HDMI 1 x LVDS 1 x VGA |

Packing List

User's manual/utility CD, SATA cable, I/O bracket

Ordering Information

| Standard | |
|-----------------------------------|---|
| MANO860PHGGA (P/N: E38M860100) | Socket G2 Mini ITX SBC with Intel® Core™ i7/ i5/ i3, VGA/ DisplayPort/HDMI/LVDS, 2 10/100/1000Mbps Ethernet, HD audio, 4 COM, 5 SATA and CFast™ |

I/O

| | |
|---------------------|---|
| MIO | 1 x PS/2 keyboard 1 x PS/2 mouse 4 x RS-232 (COM 2/3/4); with +5V/+12V powered |
| SATA | 2 x SATA-600 & 3 x SATA-300 with RAID 0/1/5/10 |
| Hardware Monitoring | Detect CPU/system temperature, voltage and support Smart fan control |
| Ethernet | 1st port as 10/100/1000 Mbps supports Wake-on-LAN, PXE Boot ROM with Intel® 82579LM 2nd port as 10/100/1000 Mbps supports Wake-on-LAN, PXE Boot ROM with Intel® 82583V |
| Audio | HD Codec audio as MIC-in/Line-in/Line-out speaker-out with Realtek ALC892 |
| USB | 12 x USB 2.0 port |
| TPM | Infineon SLB9625 for trusted platform |
| SMBus | System Management Bus for advanced monitoring/control |
| Digital I/O | 8 channels (4-IN & 4-OUT) |

Mouser Electronics

Authorized Distributor

Click to View Pricing, Inventory, Delivery & Lifecycle Information:

[Axiomtek:](#)

[MANO860PHGGA](#)