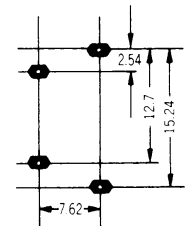
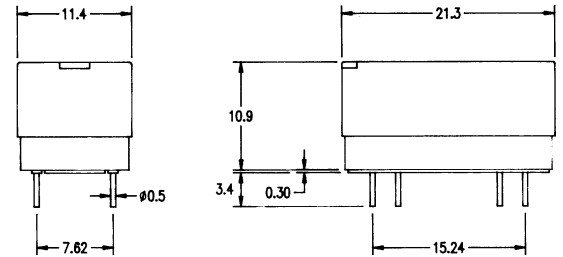
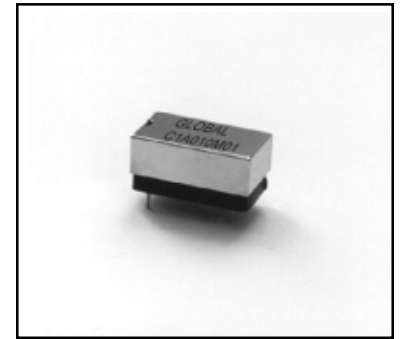


■ Features

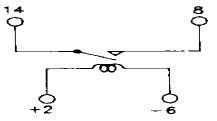
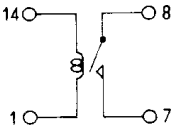
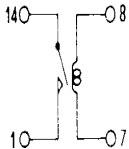
- Fully Sealed
- 4000 VDC Isolation Voltage between coil and contact
- Line Sensing

■ Characteristics

Contact resistance	200mOhm max., initial
Operate Time	0.5msec max.
Bounce Time	0.5msec max.
Release Time	0.1msec max.
Insulation Resistance	10 ¹⁰ ohm min.
Power	10VA max.
Switching Voltage	90VDC max.
Switching Current	0.5 Amps max.
Carrying Current	1.0 Amps max.
Life Expectancy	10 ⁸ (signal level)
Minimum Breakdown Voltage	100VDC across open contact 4000VDC between coil and contact
Operate Temperature	-45 - +85 C
Storage Temperature	-50 - +125 C
Minimum Permissible Load	100mVDC 10m A
Vibration	20g (10-2000Hz)
Shock	30g (11ms 1/2 sine wave)
Resonant Frequency	3.5KHz



■ Specifications (Contact Form: 1 Form A)

Part Number	Nominal Coil Current (mA)	Coil Resistance +/-10%	Pull-In Current (mA) max	Drop-Out Current (mA) min.	Circuit Schematic Top View
C1A011M01	20	10	15	5	
C1A010M01	20	10	15	5	
C1A010M03	20	10	15	5	
C1A0A2M00	20	2 x 4	15	5	