

FEATURES AND SPECIFICATIONS

Features and Benefits

- Accepts JEDEC Type A rectangular chips
- Raised inner platform with molded stops reduces stress on J-leads
- High normal force
- Locating peg available
- Black color housing standard, brown color housing available, contact factory

Reference Information

Product Specification: PS-87246
 Packaging: Tube
 UL File No.: E29179
 CSA File No.: LR19980
 Designed In: Inches

Electrical

Contact Resistance: 15mΩ max.
 Dielectric Withstanding Voltage: 600V
 Insulation Resistance: 10,000 MΩ min.

Mechanical

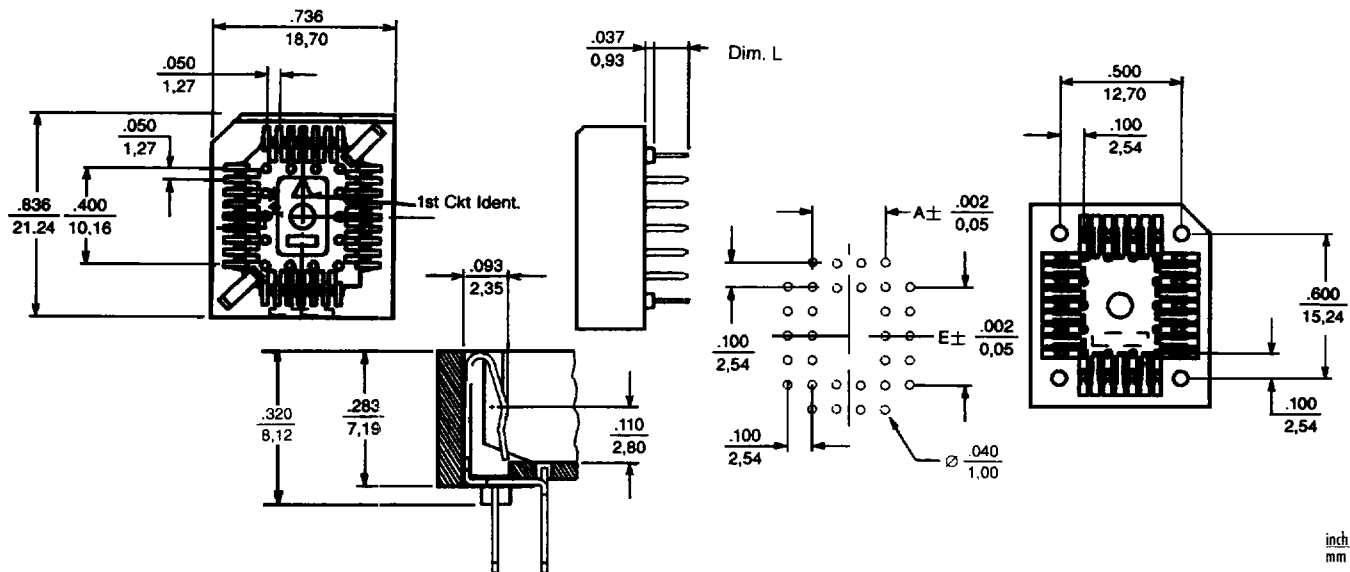
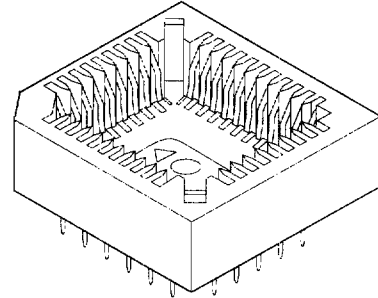
Contact Retention to Housing: 10 oz min.
 Mating Force: 16 lb max.
 Normal Force: 2 lb min.

Physical

Housing: Black PPS
 Contact: Phosphor Bronze
 Plating: Tin
 Temperature: -55 to +105°C

molex[®] 2.54mm (.100") Pitch PLCC Socket

87246



inch
mm

ORDERING INFORMATION

Circuits	Order No.		Tail Length and Peg Option
	Plating No. 1	Plating No. 2	
32	• 87246-3201	87246-3202	.142" Without Peg
32	• 87246-3221	87246-3222	.125" Without Peg
32	87246-3231	87246-3232	.142" With Peg
32	87246-3251	87246-3252	.125" With Peg

• US Standard Product, available through Molex franchised distributors

Plating No. 1: Pre-plate 3.81 μm (150 μ") min. Tin

Plating No. 2: Post-plate 3.81 μm (150 μ") min. Tin