

DESCRIPTION

The SG1626, SG2626, SG3636 is a dual inverting monolithic high speed driver that is pin-for-pin compatible with the DS0026, TSC426 and ICL7667. This device utilizes high voltage Schottky logic to convert TTL signals to high speed outputs up to 18V. The totem pole outputs have 3A peak current capability, which enables them to drive 1000pF loads in typically less than 25ns. These speeds make it ideal for driving power MOSFETs and other

large capacitive loads requiring high speed switching.

In addition to the standard packages, Linfinity offers the 16-pin SOIC (DW package) for commercial and industrial applications, and the Hermetic TO-66 (R package) for military use. These packages offer improved thermal performance for applications requiring high frequencies and/or high peak currents.

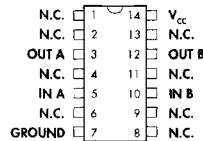
KEY FEATURES

- PIN-FOR-PIN COMPATIBLE WITH DS0026, TSC426 AND ICL7667
- TOTEM POLE OUTPUTS WITH 3.0A PEAK CURRENT CAPABILITY
- SUPPLY VOLTAGE TO 22V
- RISE AND FALL TIME LESS THAN 25ns
- PROPAGATION DELAYS LESS THAN 20ns
- INVERTING HIGH-SPEED, HIGH-VOLTAGE SCHOTTKY LOGIC
- EFFICIENT OPERATION AT HIGH FREQUENCY

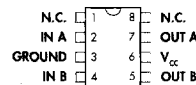
HIGH RELIABILITY FEATURES

- AVAILABLE TO MIL-STD-883B
- RADIATION DATA AVAILABLE
- LINFINITY LEVEL "S" PROCESSING AVAIL.

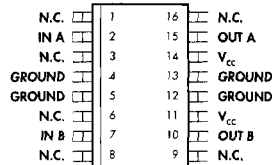
COMPLETE SPECIFICATIONS AVAILABLE FROM "LIN" FAX SYSTEM
(SEE PAGE 4-1) AND 1990/91 SILICON GENERAL DATABOOK

PACKAGE PIN OUTS


J PACKAGE
(Top View)



Y & M PACKAGE
(Top View)



DW PACKAGE
(Top View)

PACKAGE ORDER INFORMATION

T _A (°C)	J Ceramic DIP 14-pin	Y Ceramic DIP 8-pin	M Plastic DIP 8-pin	DW Plastic SOIC 16-pin
0 to 70	SG3626J	SG3626Y	SG3626M	SG3626DW
-25 to 85	SG2626J	SG2626Y	SG2626M	SG2626DW
-55 to 150	SG1626J	SG1626Y	—	—
MIL-STD-883	SG1626J/883B	SG1626Y/883B	—	—
DESC	SG1626J/DESC	SG1626Y/DESC	—	—

Note: All surface-mount packages are available in Tape & Reel. Append the letter "T" to part number. (i.e. SG3626DWT)

(Package Info / Pin Outs continued on next page)

FOR FURTHER INFORMATION CALL (714) 898-8121

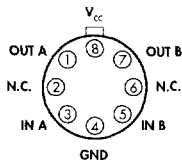
11861 WESTERN AVENUE, GARDEN GROVE, CA. 92841

SG1626/SG2626/SG3626

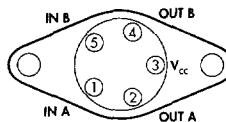
DUAL HIGH-SPEED DRIVER

PRODUCTION DATA SHEET

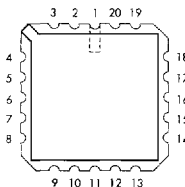
PACKAGE PIN OUTS



T PACKAGE
(Top View)



R PACKAGE
(Top View)
CASE IS GROUND
Case & Tab are internally connected to substrate ground



L PACKAGE
(Top View)

- | | |
|------------|---------------------|
| 1. N.C. | 11. N.C. |
| 2. GROUND | 12. N.C. |
| 3. N.C. | 13. OUT B |
| 4. IN A | 14. N.C. |
| 5. N.C. | 15. V _{cc} |
| 6. GROUND | 16. N.C. |
| 7. N.C. | 17. V _{cc} |
| 8. IN B | 18. N.C. |
| 9. N.C. | 19. OUT A |
| 10. GROUND | 20. N.C. |

PACKAGE ORDER INFORMATION

T _A (°C)	T Metal Can TO-99 8-pin	R Metal Can TO-66 5-pin	L Ceramic (LCC) 20-pin
0 to 70	SG3626T	SG3626R	—
-25 to 85	SG2626T	SG2626R	—
-55 to 150	SG1626T	SG1626R	—
MIL-STD-883	SG1626T/883B	SG1626R/883B	SG1626L/883B
DESC	SG1626T/DESC	SG1626R/DESC	—