

High-power LED Drivers for Illumination

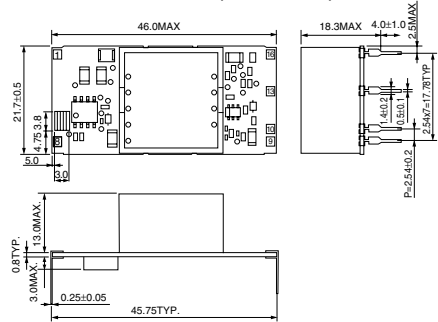
BP5845W

AC100V input, constant current

Absolute Maximum Ratings

Parameter	Symbol	Limits	Units	Remarks
Input voltage	V_i	170	V	DC
Output voltage (limits)	V_o	36	V	$I_o=360\text{mA}$
Output voltage (no load)	V_o	39	V	$I_o=0\text{mA}$
Output current	I_o	378	mA	
Output control terminal voltage	VCTL	12.5	V	
Withstand voltage	BV	1.8	kV	1sec (between primary and secondary) While pin 1 and 8 are shorted and pins 9-16 are shorted, a voltage is applied between them.
Maximum surface temperature	T_{cmax}	105	$^{\circ}\text{C}$	Ambient temperature + the module self-heating $\leq T_{cmax}$
Operating temperature range	T_{opr}	-20 to +80	$^{\circ}\text{C}$	Refer to derating curve
Storage temperature range	T_{stg}	-25 to +85	$^{\circ}\text{C}$	

Dimensions (Unit : mm)

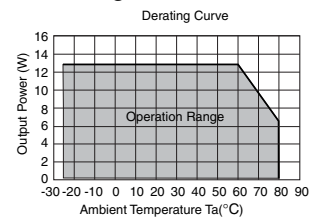


Electrical Characteristics

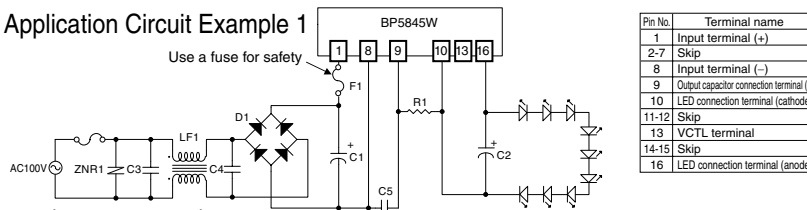
Parameter	Symbol	Spec			Units	measurement circuit	Remarks
		Min.	Typ.	Max.			
Input voltage range	V_i	113	141	170	V	-	
Output current	I_{o1}	342	360	378	mA	Figure 1	$V_i=141\text{V}, R_1=0.78\Omega$
Output voltage range	V_o	15.0	-	36	V	Figure 1	$V_i=141\text{V}, I_o=360\text{mA}$
Output ripple voltage	V_p	-	0.1	0.5	Vp-p	Figure 1	$V_i=141\text{V}, I_o=360\text{mA}$
Conversion efficiency	η	83	88	-	%	Figure 1	$V_i=141\text{V}, V_o=36\text{V}, I_o=360\text{mA}$

NOTE 1 Maximum output current varies depending on ambient temperature. Refer to the derating curve.
NOTE 2 Spike noise is not included in output ripple voltage.

Derating Curve



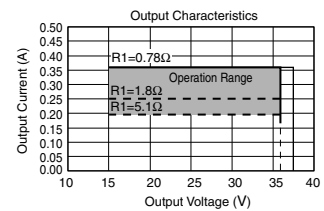
Application Circuit Example 1



External components setting

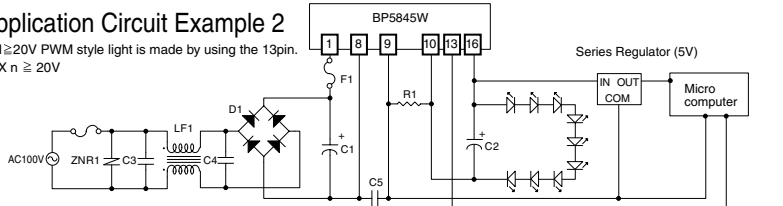
Symbol	Application	Characteristics	Recommended parts
C1	Input capacitor	22 μF / 250V General purpose	Manufactured by RUBYCON 250YXA22M
C2	Output capacitor	100 μF / 50V Low Impedance Iteam	Manufactured by NICHIKON UHD1H101M
R1	Output current setting resistor	0.78 Ω 1/4W ($I_o=360\text{mA}$)	Manufactured by ROHM MCR10EZHFR820, MCR03EZHFR15R0 A parallel connection
C3,C4	Noise reduction capacitor	It should be installed when required, above 125V 0.1 to 0.22 μF	Manufactured by MATUSHITA ECQE1A224KF
C5	Noise reduction capacitor	2200pF (Products with basic isolation certification)	Manufactured by TDK CS11-E2GA222MYNS
D1	Diodebridge	400V/1A	Manufactured by SHINDENGEN D1UBA80
F1	Fuse	125V/1A	
LF1	Line filter	10mH	
ZNR1	Varistor	Use a varistor. Be sure to use it to protect this product from thunder surge and the static electricity.	

Output Characteristics



Application Circuit Example 2

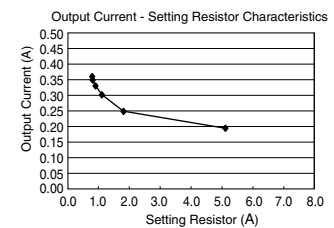
$V_{oH} \geq 20\text{V}$ PWM style light is made by using the 13pin.
 $V_F \times I_n \geq 20\text{V}$



Use condition
($T_a=25^{\circ}\text{C}$)

NO	Parameter	Symbol	Spec			Units	measurement circuit	Remarks
			Min.	Typ.	Max.			
1	LED OFF Voltage	V_{oL}	12.7	13.4	14.1	V	Figure 1	$V_{oH} \geq 20\text{V}$
2	CTL Terminal H Revel	VCTL(H)	3	5	10	V	-	Output OFF (VoL)
3	CTL Terminal L Revel	VCTL(L)	0	-	0.5 or OPEN	V	-	Output ON ($V_{oH} \geq 20\text{V}$)

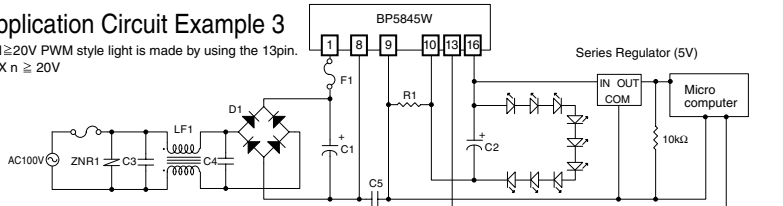
Setting current



NOTE) A maximum output current is set to 360mA.
Operations beyond this limit are prohibited.

Application Circuit Example 3

$V_{oH} \geq 20\text{V}$ PWM style light is made by using the 13pin.
 $V_F \times I_n \geq 20\text{V}$



Use condition
($T_a=25^{\circ}\text{C}$)

NO	Parameter	Symbol	Spec			Units	measurement circuit	Remarks
			Min.	Typ.	Max.			
1	LED OFF Voltage	V_{oL}	12.7	13.4	14.1	V	Figure 1	$V_{oH} \geq 20\text{V}$
2	PWM Signal H Revel	VCTL(H)	3	5	10	V	-	
3	PWM Signal L Revel	VCTL(L)	0	-	0.5	V	-	
4	PWM Signal cycle	fosc	1	10	20	kHz	-	Note 3

NOTE 3 Frequency is to be decided after you confirm it with the actual opportunity.

Power Module Usage Precautions

Safety Precautions

- 1) The products are designed and manufactured for use in ordinary electronic equipment (i.e. AV/OA/telecommunication/amusement equipment, home appliances). Please consult with the Company's (ROHM) sales staff if intended for use in devices requiring high reliability (e.g. medical/transport/aircraft/spacecraft equipment, nuclear power/fuel controllers, automotive/safety devices) and whose malfunction may result in injury or death. In this case, failsafe measures must be taken, including the following:
 - [a] Installation of protection circuits in order to improve system safety
 - [b] Incorporation of redundant circuits in the case of single-circuit failure
- 2) The products are designed for use under normal conditions. Application in special environments can cause a deterioration in product performance. Therefore, verification and confirmation of product performance, prior to use, is recommended. The following environments are considered to be 'special':
 - [a] Outdoors, exposed to direct sunlight or dust
 - [b] In contact with liquids, such as water, oils, chemicals, or organic solvents
 - [c] In areas where exposure to the sea air or corrosive gases (i.e. Cl₂, H₂S, NH₃, SO₂, NO₂) can occur
 - [d] In places where the products may be in contact with static electricity or electromagnetic waves
 - [e] In proximity to heat-producing items, plastic cords, or flammable materials
 - [f] In contact with sealing or coating products, such as resin
 - [g] In contact with unclean solder or exposed to water or water-soluble cleaning agents used after soldering
 - [h] In areas where dew condensation occurs
- 3) The products are not designed to be radiation resistant
- 4) The Company is not responsible for any problems resulting from use of the products under conditions not recommended herein.
- 5) The Company should be notified of any product safety issues. Moreover, product safety issues should be periodically monitored by the customer.

Application Notes

- 1) A sufficient margin must be allowed if changes are made to the peripheral circuit due to variations in the inherent tolerances of the external components as well as transient and static characteristics. In addition, please be aware that the Company has not conducted investigations on whether or not particular changes in the example application circuits would result in patent infringement.
- 2) The application examples, their constants, and other types of information contained herein are applicable only when the products are used in accordance with standard methods. Therefore, if mass production is intended, sufficient consideration to external conditions must be made.

Notes Regarding Industrial Property

- 1) The specifications included herein contain information related to the Company's industrial property. Their use other than pertaining to the relevant products is forbidden. Duplication and/or disclosure to a third party without express written permission is strictly prohibited.
- 2) Product information and data, including application examples, contained in the specifications are for reference purposes only; the Company does not guarantee the industrial/intellectual property rights or any other rights of a third party. Accordingly, the Company shall not bear responsibility for:
 - [a] Infringement of the intellectual property rights of a third party
 - [b] Problems arising from the use of the products listed herein
- 3) The Company prohibits the purchaser from exercising or using the intellectual/industrial property rights or any rights belonging to or are controlled by the Company, other than the right to use, sell, or dispose of the products.

Notes

- No technical content pages of this document may be reproduced in any form or transmitted by any means without prior permission of ROHM CO.,LTD.
- The contents described herein are subject to change without notice. The specifications for the product described in this document are for reference only. Upon actual use, therefore, please request that specifications to be separately delivered.
- Application circuit diagrams and circuit constants contained herein are shown as examples of standard use and operation. Please pay careful attention to the peripheral conditions when designing circuits and deciding upon circuit constants in the set.
- Any data, including, but not limited to application circuit diagrams information, described herein are intended only as illustrations of such devices and not as the specifications for such devices. ROHM CO.,LTD. disclaims any warranty that any use of such devices shall be free from infringement of any third party's intellectual property rights or other proprietary rights, and further, assumes no liability of whatsoever nature in the event of any such infringement, or arising from or connected with or related to the use of such devices.
- Upon the sale of any such devices, other than for buyer's right to use such devices itself, resell or otherwise dispose of the same, no express or implied right or license to practice or commercially exploit any intellectual property rights or other proprietary rights owned or controlled by
- ROHM CO., LTD. is granted to any such buyer.
- Products listed in this document are no antiradiation design.

The products listed in this document are designed to be used with ordinary electronic equipment or devices (such as audio visual equipment, office-automation equipment, communications devices, electrical appliances and electronic toys).

Should you intend to use these products with equipment or devices which require an extremely high level of reliability and the malfunction of which would directly endanger human life (such as medical instruments, transportation equipment, aerospace machinery, nuclear-reactor controllers, fuel controllers and other safety devices), please be sure to consult with our sales representative in advance.

It is our top priority to supply products with the utmost quality and reliability. However, there is always a chance of failure due to unexpected factors. Therefore, please take into account the derating characteristics and allow for sufficient safety features, such as extra margin, anti-flammability, and fail-safe measures when designing in order to prevent possible accidents that may result in bodily harm or fire caused by component failure. ROHM cannot be held responsible for any damages arising from the use of the products under conditions out of the range of the specifications or due to non-compliance with the NOTES specified in this catalog.

Thank you for your accessing to ROHM product informations.

More detail product informations and catalogs are available, please contact your nearest sales office.

ROHM Customer Support System

THE AMERICAS / EUROPE / ASIA / JAPAN

www.rohm.com

Contact us : webmaster@rohm.co.jp