

# DVD Micro Theater

MCD139B

Register your product and get support at

[www.philips.com/welcome](http://www.philips.com/welcome)

User manual

Manual de usuario

Manual do Utilizador



# PHILIPS

# México



Es necesario que lea cuidadosamente su instructivo de manejo.

|  |                                      |  |
|--|--------------------------------------|--|
|  | <b>PRECAUCIÓN - ADVERTENCIA</b>      |  |
|  | No abrir, riesgo de choque eléctrico |  |
| <b>ATENCIÓN</b>  |                                      |  |
| Verifique que el voltaje de alimentación sea el requerido para su aparato  |                                      |  |
| Para evitar el riesgo de choque eléctrico, no quite la tapa.<br>En caso de requerir servicio, dirijase al personal calificado. |                                      |  |

Descripción: **Minisistema de Audio**  
Modelo : **MCD139B/ 55**  
Alimentación: **110-127 / 220-240V~; 50-60 Hz**  
Consumo: **100 W**  
Importador: **Philips Mexicana, S.A. de C.V.**  
Domicilio: **Av. La Palma No.6**  
**Col. San Fernando La Herradura**  
**Huixquilucan**  
Localidad y Tel: **Edo. de México C.P. 52784**  
**Tel.52 69 90 00**  
Exportador: **Philips Electronics HK, Ltd.**  
País de Origen: **China**  
N° de Serie: \_\_\_\_\_

**LEA CUIDADOSAMENTE ESTE INSTRUCTIVO  
ANTES DE USAR SU APARATO.**

## AVISO IMPORTANTE

*Philips Mexicana, S.A. de C.V. no se hace responsable por daños o desperfectos causados por:*

- *Maltrato, descuido o mal uso, presencia de insectos o roedores (cucarachas, ratones etc.).*
- *Cuando el aparato no haya sido operado de acuerdo con el instructivo del uso, fuera de los valores nominales y tolerancias de las tensiones (voltaje), frecuencia (ciclaje) de alimentación eléctrica y las características que deben reunir las instalaciones auxiliares.*
- *Por fenómenos naturales tales como: temblores, inundaciones, incendios, descargas eléctricas, rayos etc. o delitos causados por terceros (choques asaltos, riñas, etc.).*



Manufactured under license from Dolby Laboratories. Dolby and the double-D symbol are trademarks of Dolby Laboratories.



Windows Media and the Windows logo are trademarks, or registered trademarks of Microsoft Corporation in the United States and/or other countries.

DivX Certified products: "DivX Certified, and associated logos are trademarks of DivX, Inc. and are used under license.

This product incorporates copyright protection technology that is protected by method claims of certain U.S. patents and other intellectual property rights owned by Macrovision Corporation and other rights owners. Use of this copyright protection technology must be authorized by Macrovision Corporation, and is intended for home and other limited viewing uses only unless otherwise authorized by Macrovision Corporation. Reverse engineering or disassembly is prohibited.

**Windows Media is a trademark of Microsoft Corporation.**

CONSUMERS SHOULD NOTE THAT NOT ALL HIGH DEFINITION TELEVISION SETS ARE FULLY COMPATIBLE WITH THIS PRODUCT AND MAY CAUSE ARTIFACTS TO BE DISPLAYED IN THE PICTURE. IN CASE OF 525 OR 625 PROGRESSIVE SCAN PICTURE PROBLEMS, IT IS RECOMMENDED THAT THE USER SWITCH THE CONNECTION TO THE 'STANDARD DEFINITION' OUTPUT. IF THERE ARE QUESTIONS REGARDING OUR TV SET COMPATIBILITY WITH THIS MODEL 525p AND 625p DVD PLAYER, PLEASE CONTACT OUR CUSTOMER SERVICE CENTER.

### **CAUTION**

*Use of controls or adjustments or performance of procedures other than herein may result in hazardous radiation exposure or other unsafe operation.*

### **ATENCIÓN**

*El uso de mando o ajustes o la ejecución de métodos que no sean los aquí descritos puede ocasionar peligro de exposición a radiación.*

### **CUIDADO**

*A utilização de comandos ou ajustes ou a execução de procedimentos diferentes dos descritos neste manual podem provocar uma exposição a radiações perigosas ou outras operações inseguras.*

# Index

---

English ..... 6

Español ..... 39

Português ..... 79

English

Español

Português

## General Information

|                                 |   |
|---------------------------------|---|
| Features .....                  | 8 |
| Supplied accessories .....      | 8 |
| Environmental information ..... | 8 |
| Safety information .....        | 9 |
| Maintenance .....               | 9 |

## Connections

|   |       |
|---|-------|
| Step 1: Placing speakers and subwoofer .....          | 10    |
| Step 2: Connecting speakers and subwoofer .....       | 10    |
| Step 3: Connecting TV set .....                       | 11~12 |
| Using Video In jack (CVBS) .....                      | 11    |
| Using Headphone jack .....                            | 11    |
| Using component Video In jack (Pr Pb Y) .....         | 11    |
| Using S-Video In jack .....                           | 12    |
| Using an accessory RF modulator .....                 | 12    |
| Step 4: Connecting the FM antenna .....               | 13    |
| Step 5: Connecting the power cord .....               | 13    |
| Step 6: Connecting a VCR or cable/satellite box ..... | 13    |
| Viewing and listening to playback .....               | 13    |
| Step 7: Connecting digital audio equipment .....      | 14    |
| Recording (digital) .....                             | 14    |
| Step 8: Connecting portable audio player .....        | 14    |
| Portable audio player(MP3) .....                      | 14    |

## Functional Overview

|                              |       |
|------------------------------|-------|
| Controls on the system ..... | 15    |
| Remote control .....         | 16~17 |

## Getting Started

|   |       |
|---|-------|
| Step 1: Using the Remote Control .....                    | 18    |
| Using the remote control to operate the Player ..         |       |
| Step 2: Setting up the TV .....                           | 18~20 |
| Selecting the color system that matches your TV set ..... | 18    |
| Component Setting .....                                   | 19    |
| Setting up Progressive Scan feature .....                 | 19    |
| To deactivate Progressive manually .....                  | 20    |
| Step 3: Setting language preference .....                 | 20    |
| Setting the OSD Language .....                            | 20    |
| Setting the Audio, Subtitle and Disc Menu language .....  | 20    |

## Basic Operations

|                                      |    |
|--------------------------------------|----|
| Switching the system on/off .....    | 21 |
| Power saving automatic standby ..... | 21 |
| Volume control .....                 | 21 |
| Sound Control .....                  | 21 |
| DBB (Dynamic Bass Boost) .....       | 21 |
| DSC (Digital Sound Control) .....    | 21 |

## Disc Operations

|  |       |
|--|-------|
| Playable Discs .....                                       | 22    |
| Region Codes .....   | 22    |
| Playing discs .....  | 23    |
| Using the Disc Menu .....                                  | 23    |
| Playback control (PBC) .....                               | 23    |
| Resuming playback .....                                    | 23    |
| Selecting and searching .....                              | 23~24 |
| Selecting a different track/chapter .....                  | 23    |
| Fast forwarding/reversing .....                            | 24    |
| Slow forwarding/reversing .....                            | 24    |
| Different play modes: REPEAT, SHUFFLE and REPEAT A-B ..... | 24    |
| REPEAT .....   | 24    |
| Repeat A-B .....   | 24    |
| Programming favourite chapters/tracks .....                | 25    |
| Display information .....                                  | 25    |
| Moving to another title/chapter .....                      | 25    |
| Viewing from another angle .....                           | 25    |
| ZOOM .....   | 26    |
| AUDIO .....  | 26    |
| SUBTITLE .....   | 26    |
| Playing MP3/Picture disc (Kodak, JPEG) .....               | 26    |
| MP3/JPEG Picture disc .....                                | 26    |
| Playing MP3 music and JPEG pictures simultaneously .....   | 27    |
| Kodak Picture disc .....                                   | 27    |
| Playing a DivX disc .....                                  | 28    |

## DVD Menu Operations

|   |       |
|---|-------|
| Using the setup menu (user preference settings) ..... | 29~31 |
| Setting the TV Display .....                          | 29    |
| Screen Saver .....                                    | 29    |
| Display Dim .....                                     | 30    |
| DivX(R) VOD Code .....                                | 30    |
| DivX Subtitle .....                                   | 30    |
| Changing the password .....                           | 30    |
| Restricting playback by setting parental level .....  | 31    |
| Rating explanations .....                             | 31    |
| OSD language (menu language) .....                    | 31    |
| Default .....   | 31    |

---

## **Tuner**

|  |    |
|--|----|
| Tuning to radio stations .....           | 32 |
| Storing preset radio stations .....      | 32 |
| Manual programming .....                 | 32 |
| Autostore: automatic programming .....   | 32 |
| Listening to preset radio stations ..... | 32 |
| Deleting a preset radio station .....    | 32 |

---

## **Clock/Timer**

|                             |    |
|-----------------------------|----|
| Viewing clock .....         | 33 |
| Setting clock .....         | 33 |
| Setting wake-up timer ..... | 33 |
| Setting sleep timer .....   | 33 |

---

## **Specifications** ..... 34 |

---

## **Troubleshooting** ..... 35~37 |

---

## **Glossary** ..... 38 |

---

# General Information

Congratulations on your purchase and welcome to Philips!

To fully benefit from the support that Philips offers, register your product at [www.philips.com/welcome](http://www.philips.com/welcome).

***This product complies with the radio interference requirements of the European Community.***

## Features

Your DVD MICRO THEATRE System with 2.1-channel full analog amplifier creates the same dynamic sound qualities that you find in full fledged cinemas and incorporates some of the best features in home theater technology. Other features include:

### **Additional Component Connections**

Lets you connect other audio and audio/visual components to the DVD micro system.

### **Parental Control (Rating Level)**

Lets you set a ratings level so that your children cannot watch a DVD that has a rating higher than you set.

### **Sleep/Wake-up Timer**

Enables the system to switch on/off automatically at a preset time.

### **Progressive Scan**

Provides high quality flicker-free images for film based sources. When a picture refreshes, its vertical resolution can double to 525 lines.

**Note:**

– *To fully enjoy the progressive scan feature, you need a progressive scan TV.*

## Supplied accessories

- Remote control with one CR2025 battery
- Two speakers and one subwoofer
- DIN cable
- Composite video cable (yellow)
- FM wire antenna
- User Manual and Quick Start Guide

***If any item is damaged or missing, contact your retailer or Philips.***

## Environmental information

All unnecessary packaging has been omitted. We have tried to make the packaging easy to separate into three materials: cardboard (box), polystyrene foam (buffer) and polyethylene (bags, protective foam sheet).

Your system consists of materials which can be recycled and reused if disassembled by a specialised company. Please observe the local regulations regarding the disposal of packaging materials, exhausted batteries and old equipment.



## Safety information

- Before operating the system, check that the operating voltage indicated on the typeplate (or the voltage indication beside the voltage selector) of your system is identical with the voltage of your local power supply. If not, please consult your dealer.
- Where the MAINS plug or an appliance coupler is used as the disconnect device, the disconnect device shall remain readily operable.
- Place the system on a flat, hard and stable surface.
- The apparatus shall not be exposed to dripping or splashing.
- Install the unit near the AC outlet and where the AC power plug can be easily reached.
- Place the system in a location with adequate ventilation to prevent internal heat build-up in your system. Allow at least 10 cm (4 inches) clearance from the rear and the top of the unit and 5 cm (2 inches) from each side.
- The ventilation should not be impeded by covering the ventilation openings with items, such as newspapers, table-cloths, curtains, etc.
- Do not expose the system, batteries or discs to excessive moisture, rain, sand or heat sources caused by heating equipment or direct sunlight.
- No naked flame sources, such as lighted candles, should be placed on the apparatus.
- No objects filled with liquids, such as vases, shall be placed on the apparatus.
- If the system is brought directly from a cold to a warm location, or is placed in a very damp room, moisture may condense on the lens of the disc unit inside the system. Should this occur, the CD player would not operate normally. Leave the power on for about one hour with no disc in the system until normal playback is possible.
- The mechanical parts of the set contain self-lubricating bearings and must not be oiled or lubricated.
- **When the system is switched to Standby mode, it is still consuming some power. To disconnect the system from the power supply completely, remove the AC power plug from the wall socket.**

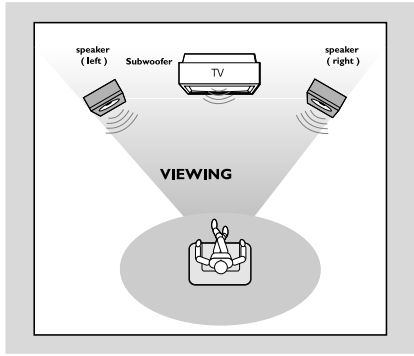
## Maintenance

- When a disc becomes dirty, clean it with a cleaning cloth. Wipe the disc from the center out, in a straight line.
- Do not expose the player, batteries or discs to humidity, rain, sand or excessive heat (caused by heating equipment or direct sunlight). Always keep the disc tray closed to avoid dust on the lens.
- Do not use solvents such as benzene, thinner, commercially available cleaners, or anti-static spray intended for colour discs.
- The lens may cloud over when the player is suddenly moved from cold to warm surroundings, making it impossible to play a disc. Leave the player in the warm environment until the moisture evaporates.



# Connections

## Step 1: Placing speakers and subwoofer



For best possible surround sound, locate your speakers and subwoofer as follows:

- Place the left and right speakers at equal distances from the TV set and at an angle of approximately 45 degrees from the listening position.
- Place the subwoofer on the floor:

### Notes:

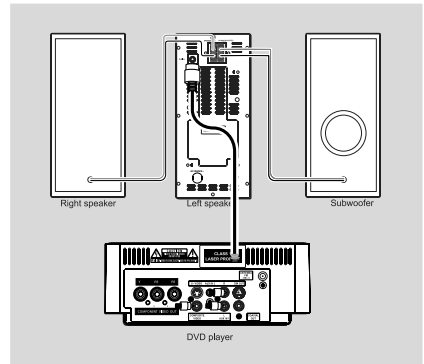
- To avoid magnetic interference, position the speakers, subwoofer as far as possible from the main unit, TV set or other radiation source.
- Allow adequate ventilation around the DVD System.

### IMPORTANT!

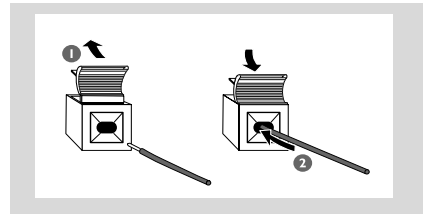
The type plate is located on the bottom of the system.

To avoid overheating of the system, a safety circuit has been built in. Therefore, your system may switch to Standby mode automatically under extreme conditions. If this happens, let the system cool down before reusing it.

## Step 2: Connecting speakers and subwoofer



- Connect the supplied DIN cable to DVD player's DIN jack and the left speaker's DIN jack.
- Connect the supplied speaker wires of the right speaker to SPEAKER RIGHT on the left speaker; red wire to red jack ("+"), black wire to black jack ("-"). Fully insert the stripped portion of the speaker wire into the terminal as shown.



- Connect the supplied speaker wire of the subwoofer to SUBWOOFER OUT on the left speaker; green wire to green jack ("+"), white wire to white jack ("-").

### Notes:

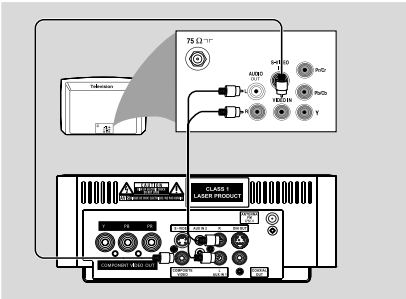
- For optimal sound performance, use the supplied speakers.
- Do not connect more than one speaker to any one pair of +/- speaker terminals.
- Do not connect speakers with an impedance lower than the speakers supplied. Please refer to the SPECIFICATIONS section of this manual.

## Step 3: Connecting TV set

### IMPORTANT!

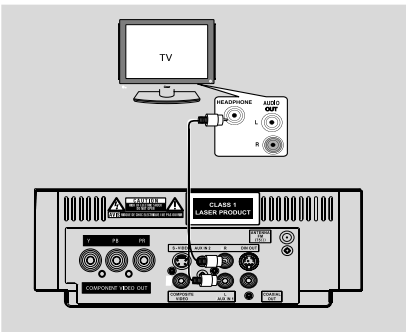
- You only need to make one video connection from the following options, according to the capabilities of your TV system.
- **S-Video or Component Video connection provides higher picture quality.** These options must be available on your TV set.
- **Connect the system directly to the TV set.**

### Using Video In jack (CVBS)



- Use the supplied composite video cable (yellow) to connect the system's **COMPOSITE VIDEO** jack to the video input jack (or labeled as A/V In, Video In, Composite or Baseband) on the TV set.
- To listen to TV channels through this system, use the audio cables (white/red, not supplied) to connect **AUX IN1 (L/R)** jacks to the corresponding AUDIO OUT jacks on the TV set.

### Using Headphone jack

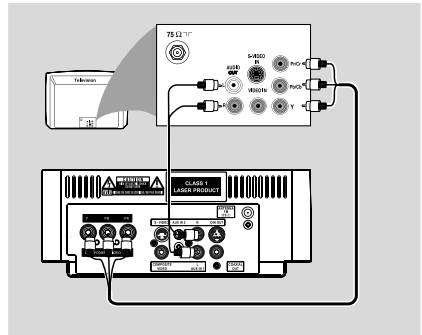


- To listen to TV channels through this system, use the audio cables (white/red, not supplied) to connect **AUX IN1 (L/R)** jacks to the HEADPHONE jacks on the TV set (with a 3.5mm-diameter stereo jack).

Before starting operation, press **AUX1/2/TV** on the remote control to select "AUX 1" in order to activate the input source.

### Using component Video In jack (Pr Pb Y)

- Use the component video cables (red/blue/green, not supplied) to connect the system's **PR/ PB/ Y** jacks to the corresponding Component video input jacks (or labeled as Pr/Cr Pb/Cb Y or YUV) on the TV set.
- To listen to TV channels through this system, use the audio cables (white/red, not supplied) to connect **AUX IN1 (L/R)** jacks to the corresponding AUDIO OUT jacks on the TV set.

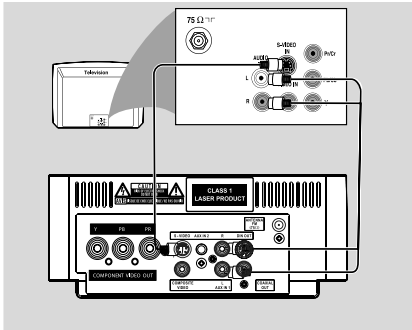


### Notes for progressive scan video:

- The progressive scan video quality is only possible when using Y Pb Pr, and a progressive scan TV is required.
- If you are using a Progressive Scan TV (TV must indicate Progressive Scan or ProScan capability), to activate TV Progressive Scan, please refer to your TV user manual. For DVD system's Progressive Scan function, see "Getting Started - Setting up Progressive Scan feature".
- If your TV does not support Progressive Scan, you will not be able to view the picture. Turn off progressive scan in PROGRESSIVE menu of the system setup menu.

# Connections

## Using S-Video In jack

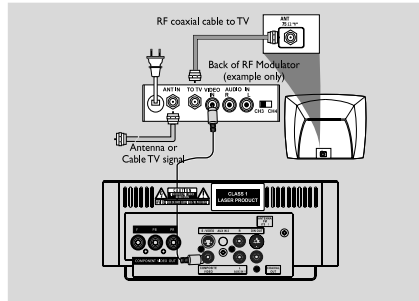


- Use the S-Video cable (not supplied) to connect the system's **S-VIDEO** jack to the S-Video input jack (or labeled as Y/C or S-VHS) on the TV set.
- To listen to TV channels through this system, use the audio cables (white/red, not supplied) to connect **AUX IN1 (L/R)** jacks to the corresponding AUDIO OUT jacks on the TV set.

## Using an accessory RF modulator

### IMPORTANT!

– If your TV set only has a single **Antenna In** jack (or labeled as **75 ohm** or **RF In**), you will need a **RF modulator** in order to view the DVD playback via TV. See your electronics retailer or contact Philips for details on RF modulator availability and operations.



- Use the supplied composite cable (yellow) to connect the system's **COMPOSITE VIDEO** jack to the video input jack on the RF modulator.
- Use the RF coaxial cable (not supplied) to connect the RF modulator to your TV's RF jack.

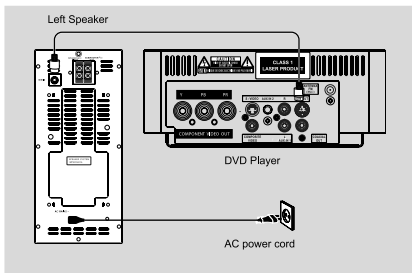
## Step 4: Connecting the FM antenna

- Connect the supplied FM antenna to the FM (75  $\Omega$ ) jack at the back of the main unit. Extend the FM antenna and fix its end to the wall.

## Step 5: Connecting the power cord

### IMPORTANT!

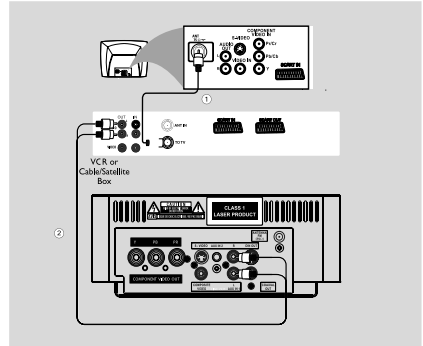
– Never make or change any connection with the power switched on.



- After everything is connected properly, plug in the AC power cord to the power socket.

## Step 6: Connecting a VCR or cable/satellite box

### Viewing and listening to playback

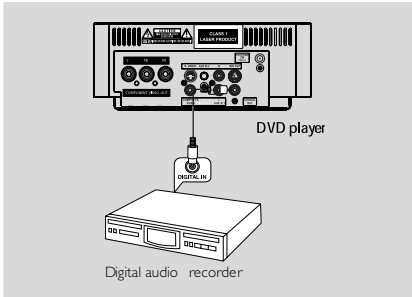


- 1 Connect the VCR or Cable/Satellite Box to the TV system as shown.
- 2 Use the audio cables (red/white, not supplied) to connect the system's **AUX IN1 (L/R)** jacks to the **AUDIO OUT** jacks on the VCR or Cable/Satellite box.

Before starting operation, press **AUX1/2/TV** on the remote control to select "AUX 1" in order to activate the input source.

# Connections

## Step 7: Connecting digital audio equipment

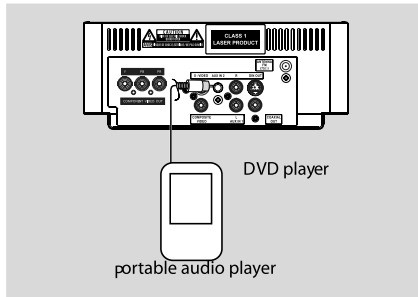


### Recording (digital)

Connect the system's COAXIAL OUT (digital out) jack to the DIGITAL IN jack on a digital recording device (DTS-Digital Theater System compatible, with a Dolby Digital decoder, for example).

Before operation, set COAXIAL OUTPUT according to the audio connection.

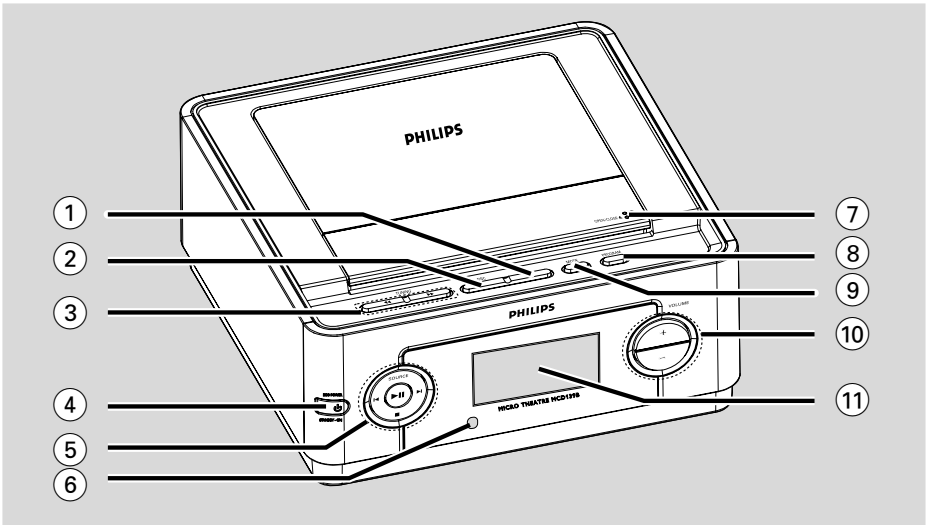
## Step 8: Connecting portable audio player



### Portable audio player(MP3)

Connect the system's AUX IN 2 jack to the HEADPHONE jack (diameter 3.5mm) on a portable audio player.

Before starting playback, press **AUX1/2** on the remote control to select "AUX 2" in order to activate the input source. The music will be heard through the speakers.



## Controls on the system

### ① DBB

- enables or disables bass enhancement.

### ② DSC

- selects different types of preset sound equalizer settings.

### ③ TUNING ◀ / ▶

Tuner ..... tunes to a radio station

Disc ..... fast searches backward/forward  
in a disc at different speeds.

Clock ..... sets the minutes

### ④ STANDBY-ON ⏻

- switches the system on or to Eco-power standby /standby mode.

### ⑤ ▶ ||

- starts or interrupts disc playback

### SOURCE

- selects the respective sound source: DISC, TUNER(FM), AUX1, AUX2 .



Disc ..... press to skip to the previous/  
next chapter/title/track.

Tuner ..... selects a preset radio station

Clock ..... sets the hours

- stops disc playback or erases a program.

### ⑥ iR Sensor

- point the remote control towards this sensor.

### ⑦ OPEN/CLOSE

- opens or closes the disc door.

### ⑧ PROGRAM

Tuner ..... program the favourite stations.

Tuner ..... press and hold to start automatic  
preset programming.

Disc ..... program the favourite tracks.

### ⑨ MODE

- selects various repeat play modes (For VCD with PBC feature, PBC must be turned off.)

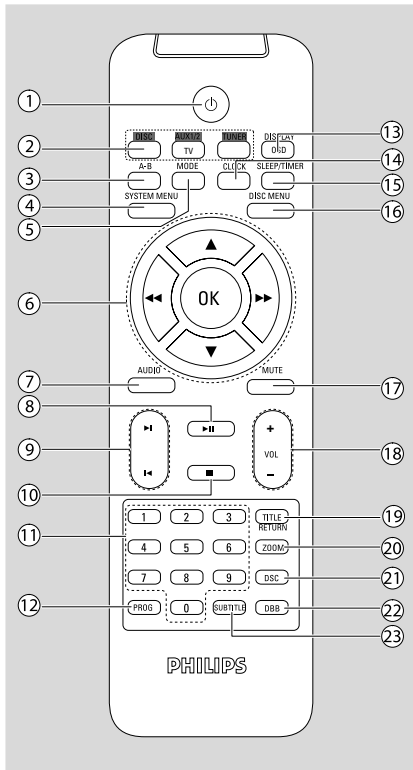
### ⑩ VOLUME +/-

- adjusts the volume upward/downward.

### ⑪ Display

- shows the current status of the DVD player.

# Functional Overview



## Remote control

- ① **Power**
  - switches the system to Eco-power standby / standby mode.
- ② **SOURCE (DISC/TUNER/AUX1/2)**
  - switches on the system
  - selects the respective sound source for disc/tuner/aux1/2.
- ③ **A-B**
  - repeats playback of a specific section within a chapter or a track.
- ④ **SYSTEM MENU**
  - enters or exits the system menu.
- ⑤ **MODE**
  - selects various repeat play modes (For VCD with PBC feature, PBC must be turned off.)
- ⑥ **OK**
  - confirms a selection.
  - selects an item in a menu.
  - moves an enlarged picture up/down/left/right.
  - Disc ..... fast searches backward/forward in a disc at different speeds.
  - Tuner ..... tunes to a radio station
  - Clock ..... sets the minutes
- ⑦ **AUDIO**
  - for VCD
    - sets stereo, mono left, mono right or mix mono sound mode.
  - for DVD
    - selects an audio language.
- ⑧ **▶ II**
  - starts or interrupts disc playback.
- ⑨ **◀ / ▶**
  - Tuner ..... selects a preset radio station
  - Disc ..... skips to the previous/next chapter/ title/track
  - Clock ..... sets the hours
- ⑩ **■**
  - stops disc playback or erases a program.
- ⑪ **Numeric Keypad (0-9)**
  - inputs a track/title/chapter number of the disc.
- ⑫ **PROG**
  - Tuner ..... program the favourite stations.
  - Tuner ..... press and hold to start automatic preset programming.
  - Disc ..... program the favourite tracks.
- ⑬ **DISPLAY (OSD)**
  - displays the current status and/or disc information.
- ⑭ **CLOCK**
  - sets and views the clock
- ⑮ **SLEEP/TIMER**
  - activates/deactivates or selects the sleep timer
  - activates/deactivates or sets the wake-up timer
- ⑯ **DISC MENU**
  - for DVD, enters or exits disc contents menu.
  - for VCD/SVCD, toggle between PBC ON or OFF.



- ⑰ **MUTE**
  - disables or enables sound output.
- ⑱ **VOL +/-**
  - adjusts the volume upward/downward.
- ⑲ **TITLE/RETURN**
  - for DVD, go back to the previous menu.
  - for VCD, in play mode, go back to the PBC menu page.
- ⑳ **ZOOM**
  - zoom in or out the picture.
- ㉑ **DSC**
  - selects different types of preset sound equalizer settings.
- ㉒ **DBB**
  - enables or disables bass enhancement.
- ㉓ **SUBTITLE**
  - selects a subtitle language.

**Notes for remote control:**

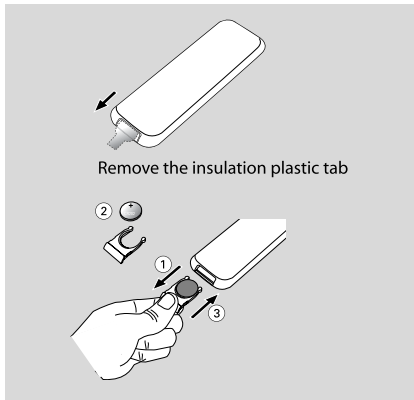
- **First select the source you wish to control by pressing one of the source select keys on the remote control (for example DISC , TUNER).**
- **Then select the desired function (for example ►, ◀, ▶).**

# Getting Started

## Step 1: Using Remote Control

### IMPORTANT!

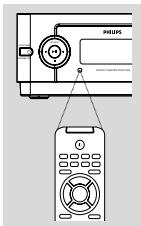
- Before using the remote control, remove the insulation plastic tab as shown in the picture below.
- If the remote control does not function correctly or the operating range is reduced, replace the battery with a new (CR2025) battery.



- 1 Push to open the battery tray.
- 2 Replace a new battery according to the indicated polarity.
- 3 Push the battery tray back to close it.

### Using the Remote Control to operate the Player

- 1 Aim the Remote Control directly at the remote sensor (IR) on the front panel.
- 2 Select the source you wish to control by pressing one of the source select buttons on the remote.
- 3 Then select the desired function (for example, ► || ◀ or ►).



### CAUTION!

- Remove the battery if it is exhausted or if the Remote Control is not being used for a long time.
- Batteries contain chemical substances, so they should be disposed of properly.

## Step 2: Setting up the TV

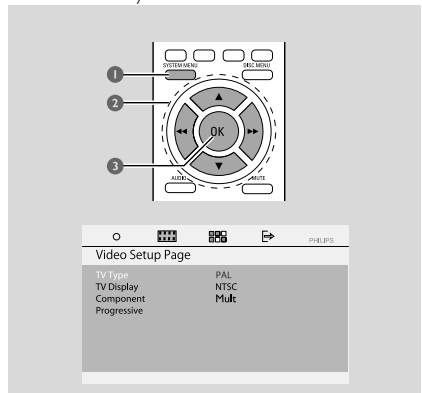
### IMPORTANT!

Make sure you have completed all the necessary connections. (See "Connecting TV").

- 1 Switch the DVD system on and then select DISC source. (See "Switching the system on/off").
- 2 Turn on the TV and set to the correct video-in channel. You should see the blue Philips DVD background screen on the TV.
  - Usually these channels are between the lowest and highest channels and may be called FRONT, A/V IN, or VIDEO. See your TV manual for more details.
  - Or; you may go to channel 1 on your TV, then press the Channel up button repeatedly until you see the Video In channel.
  - Or; the TV Remote Control may have a button or switch that chooses different video modes.
  - Or; set the TV to channel 3 or 4 if you are using an RF modulator.

### Selecting the color system that matches your TV set

This DVD system is compatible with both NTSC and PAL. For the playback of a DVD disc on this DVD system, the color systems of the DVD, TV set and DVD System should match.



- 1 In disc mode, press **SYSTEM MENU**.
- 2 Press ◀▶ / ▼ / ▲ keys on the remote control to navigate in the menu.
  - Move to "Video Setup Page" and press ▼.
  - Move to "TV TYPE" and press ▶▶.

### **PAL**

– Select this if the connected TV set is PAL system. It will change the video signal of an NTSC disc and output to PAL format.

### **NTSC**

– Select this if the connected TV set is NTSC system. It will change the video signal of a PAL video disc and output to NTSC system.

### **MULTI**

– Select this if the connected TV set is compatible with both NTSC and PAL (multi system). The output format will be consistent with the video signal of the disc.

- 3 Select an item and press **OK**.
  - The screen messages for further setting confirmation may appear. Follow the on-screen instructions to proceed to confirm the setting or not.

**To remove the menu**  
Press **SYSTEM MENU**.

## Component Setting

Component selection enables you to choose the type of video output suitable for your DVD system.

- 1 In disc mode, press **SYSTEM MENU**.
- 2 Press ◀▶ / ▼ / ▲ keys on the remote control to navigate in the menu.
  - Move to "Video Setup Page" and press ▼.
  - Move to "Component" and press ▶▶.

### **YUV**

– Select YUV if you have connected the Pr Pb Y output to your TV using Pr Pb Y jack.

### **S-VIDEO**

– Select S-VIDEO if you have connected the S-VIDEO output to your TV using S-VIDEO jack.

- 3 Select an item and press **OK**.

**To remove the menu**  
Press **SYSTEM MENU**.

## Setting up Progressive Scan feature (for Progressive Scan TV only)

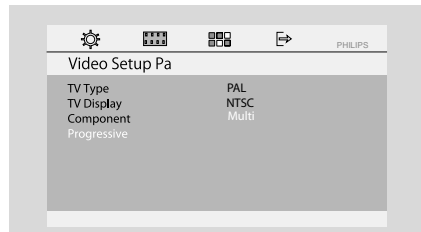
The progressive scan display twice the number of frames per seconds than interlaced scanning (ordinary normal TV system). With nearly double the number of lines, progressive scan offers higher picture resolution and quality.

### **IMPORTANT!**

**Before enabling the progressive scan feature, you must ensure:**

- 1) Your TV can accept progressive signals, a progressive scan TV is required.
- 2) You have connected the DVD player to your TV using Y Pb Pr (see "Connecting TV set")
- 3) Make sure Component has been set to YUV.

- 1 Turn on your TV.
- 2 Turn off your TV progressive scan mode or turn on interlaced mode (refer to your TV user manual).
- 3 Press **STANDBY-ON** ⏻ to turn on the DVD player.
- 4 Select the correct Video Input channel.
- 5 In disc mode, press **SYSTEM MENU**.
- 6 Press ◀▶ / ▼ / ▲ keys on the remote control to navigate in the menu.
  - Move to "Video Setup Page" and press ▼.
  - Move to "Progressive">"On" and press **OK**.



- 7 Read the notification message on the TV and confirm you action by selecting the {OK} in the menu and press **OK**.

**There will be a distorted picture on your TV at this state until you turn on the progressive scan mode on your TV.**

- 8 Turn on your TV progressive scan mode (refer to your TV user manual).

# Getting Started

- 9 In the confirmation menu, press ◀/▶ to highlight OK in the menu and press **OK** on the remote to confirm.
  - Progressive scan is now set on. TV screen comes to the system menu.
  - If distorted picture still appears, it indicates that your TV doesn't support progressive scan. In this case, turn off progressive scan as described in "To deactivate Progressive manually".
- 10 Press **SYSTEM MENU** on the remote to exit the system menu.
  - The setup is complete now and you can start enjoying the high quality picture.

## To deactivate Progressive manually

- **When the distorted sign still appears on the TV**, it may be because the connected TV does not accept progressive signals, and progressive is set by mistake. You must reset the unit to interlace format.
  - 1 Turn off your TV progressive scan mode or turn on to interlaced mode (refer to your TV user manual).
  - 2 Turn off progressive scan by selecting "OFF" under PROGRESSIVE menu, then press **SYSTEM MENU** on the remote to exit the system menu.
  - To turn off progressive scan, you may also first press **OPEN/CLOSE** to open the disc door; then press ◀ and **AUDIO** on the remote control.
    - Progressive scan is turned off.

## Step 3: Setting language preference

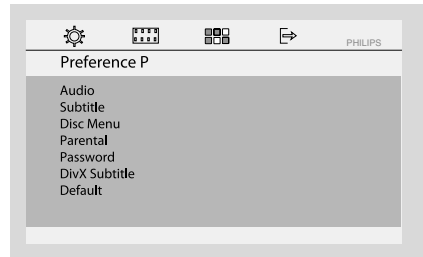
You can select your own preferred language settings. This DVD system will automatically switch to the selected language whenever you load a disc. If the language selected is not available on the disc, the disc's default language will be used instead. The OSD language in the system menu will remain once selected.

## Setting the OSD Language

- 1 In disc mode, stop playback and press **SYSTEM MENU**
- 2 Press ◀/▶ / ▼ / ▲ keys on the remote control to navigate in the menu.
  - Move to "General Setup Page" and press ▼.
  - Move to "OSD Lang" and press ▶▶.
- 3 Press ◀/▶ to select a language and press **OK**.

**To remove the menu**  
Press **SYSTEM MENU**.

## Setting the Audio, Subtitle and Disc Menu language



- 1 In disc mode, stop playback and press **SYSTEM MENU**
- 2 Press ◀/▶ / ▼ / ▲ keys on the remote control to navigate in the menu.
  - Move to "Preference Page" and press ▼.
  - Move to one of the following and press ▶▶.
    - "Audio" (disc's soundtrack)
    - "Subtitle" (disc's subtitles)
    - "Disc Menu" (disc's menu)
- 2 Press ▼ / ▲ to select a language and press **OK**.

**To remove the menu**  
Press **SYSTEM MENU**.

## IMPORTANT!

- Before you operate the system, complete the connection procedures.
- When the system is switched to Standby mode, it is still consuming power. To disconnect the system from the power supply completely, remove the AC power plug from the wall socket.

## Switching the system on/off

- In standby/Eco-power standby mode, press **STANDBY-ON** (⏻) / **ECO POWER** or **SOURCE** on the set, or **DISC, AUX1/2/TV** or **TUNER** on the remote to switch on the system.
  - "POWER ON" is displayed briefly.
  - The system will switch to the selected or last selected source.

### To switch the system to Eco-power standby mode

- In power-on mode, press briefly **STANDBY-ON** (⏻) (⏻ on the remote).
  - "ECO POWER" is displayed briefly.
  - Eco-power lamp (⏻) on the front panel will light up.
  - The LCD display will go blank.

### To switch the system to standby mode

- In power-on mode, press and hold **STANDBY-ON** (⏻) (⏻ on the remote).
  - The clock time will be displayed. Or "----:--" will be displayed if clock time is not set.

#### Helpful hints:

- Pressing and holding ⏻ on the remote can switch between Eco-power standby and normal standby.

## Power saving automatic standby

As a power-saving feature, the system will automatically switch to Standby mode if you don't press any button within 15 minutes in the stop mode.

## Volume control

Press **VOLUME (+/-)** (or **VOL +/-** on the remote) to increase or decrease the volume level.

- The display briefly shows "VOL" and a volume value from "01" to "99" ("MIN" or "MAX" is displayed when adjusted to the lowest or highest volume level).

### To switch off the volume temporarily

- Press **MUTE** on the remote.
  - Playback will continue without sound and "MUTE" is displayed briefly.
- To activate sound reproduction, you can:
  - press **MUTE** again;
  - adjust the volume controls;

## Sound Control

### DBB (Dynamic Bass Boost)

DBB enhances the bass response.

- Press **DBB** to enable or disable DBB feature.
  - If DBB is activated, "DBB ON" will be shown.
  - If DBB is deactivated, "DBB OFF" will be shown.

#### Helpful hints:

- Some discs might be recorded in high modulation, which causes a distortion at high volume. If this occurs, switch off DBB or reduce the volume.

### DSC (Digital Sound Control)

DSC provides a different type of preset sound equalizer setting.

- Press **DSC** repeatedly to select: CLASSIC (default), ROCK, JAZZ, POP.

# Disc Operations

## IMPORTANT!

- Depending on the DVD or VIDEO CD, some operations may be different or restricted.
- Do not push on the disc tray or put any objects other than disc on the disc tray. Doing so may cause the disc player malfunction.
- If the inhibit icon appears on the TV screen when a button is pressed, it means the function is not available on the current disc or at the current time.

## Playable Discs

Your DVD Player will play:

- Digital Versatile Discs (DVDs)
- Video CDs (VCDs)
- Super-Video CDs (SVCDs)
- Finalised DVD recordable (DVD±R)
- Digital Versatile Discs + Recordable (DVD+R)
- Digital Versatile Discs + Rewritable (DVD+RW)
- Audio Compact Discs (CDs)
- MP3/WMA discs, picture (Kodak, JPEG) files on CD-R (W)
- ISO 9660/UDF format
- JPEG resolution support up to 3073x2048
- Supported sampling frequencies: 32kHz, 44.1kHz, 48kHz.
- Supported Bit-rates: 32~256 (kbps), variable bit rates (average 128kbps)
- DivX files on CD-R(W)/DVD+R(W):
  - DivX 3/4/5

## Region Codes

DVD discs and players are designed with regional restrictions. Before playing a disc, make sure the disc is for the same region as your player. The regional code for this unit is indicated at the bottom panel.



### Note:

- If you are having trouble playing a certain disc, remove the disc and try a different one. Improperly formatted disc will not play on this DVD Player.



# Disc Operations

## Playing discs

- 1 For DVDs and VCDs, make sure that the system is properly connected to your TV (See Connecting a TV), and your TV is turned on and set to video-in channel (See Setting up the TV).
- 2 Press **SOURCE** on the system once or more to select DVD mode ( or **DISC** on the remote control).  
→ You should see the blue Philips DVD background screen on the TV.
- 3 Push **OPEN/CLOSE** on the top of the system to open the disc tray.
- 4 Insert a disc with the print side facing up and close the disc tray.
- 5 Playback will start automatically (depending on the disc type).  
→ If a disc menu appears on the TV, see "Using the Disc Menu".  
→ If the disc is locked by parental control, you must enter your six-digit password. (See "Changing the password").

### To interrupt playback

- Press ► **II**.  
→ "II" is displayed on the TV screen.
- To resume playback, press ► **II** again.

### To stop playback

- Press ■.

## Using the Disc Menu

- 1 Press **DISC MENU** on the remote control.  
→ If the current title has a menu, the menu will appear on the screen. Otherwise, the disc menu will be displayed.
- 2 Press ◀◀ / ▶▶ / ▼ / ▲ to select the desired title or chapter; and then press ► **II** or **OK**.  
→ Playback starts from the selected title or chapter.
- 3 Press **DISC MENU** on the remote control to go to disc menu of the disc.

### Note:

– If no title menu or root menu is recorded in the DVD disc, pressing this button will restart playback from the first track.

## Playback control (PBC)

PBC playback allows you to play Video CD interactively, following the menu on the display.

- Press **DISC MENU** to toggle between PBC ON and PBC OFF.

### Playing a disc with PBC function

- If PBC OFF, the system will start playback automatically.
- If PBC ON, the PBC menu (if available) will appear on the TV screen for selection. Use the **numeric keys (0-9)** to enter your choice.

### Note:

– This function is not available for DVD/CD/MP3/DivX disc.

## Resuming playback

- During playback, press ■ once to stop the playback in resume mode, then press ► **II** to start playback from where you have stopped.

### To cancel the resume mode

- In the stop position, press ■ again to fully stop the playback. Or open the disc door; or switch the system to standby mode.

## Selecting and searching

### Selecting a different track/chapter

#### For DVD/VCD/CD/MP3:

- During playback, briefly press ◀ / ▶ to select the previous or next track/chapter.

#### Or,

use the **Numeric Keypad (0-9)** on the remote control to directly input your track number:

→ After selecting, playback will automatically start from the beginning of the selected track.

#### Helpful hints:

- Some VCDs have a single track, so track selecting or an invalid input value for the current disc will be ignored.
- If the player has been set to repeat chapter (track), pressing this button will replay the same chapter (track) from its beginning.

# Disc Operations

## Fast forwarding/reversing

### For DVD/VCD/DivX/WMA/MP3:

- 1 During playback, press ◀◀ / ▶▶ repeatedly to select fast search speed in forward (FF) or reverse (FR) playback.
- 2 To resume to normal playback, press ▶||. Or; press ◀◀ / ▶▶ repeatedly until "▶" is displayed on the TV screen.

#### Helpful hints:

- Fast searching forward/backward is available only within the same track.

## Slow forwarding/reversing

### For DVD/VCD:

- 1 During playback, press ▲ / ▼ repeatedly to select slow search speed in forward (SF) or reverse (SR) playback.
- 2 To resume to normal playback, press ▶||. Or; press ▲ / ▼ repeatedly until "▶" is displayed on the TV screen.

#### Helpful hints:

- For VCD, slow reverse is unavailable.

## Different play modes: REPEAT, SHUFFLE and REPEAT A-B

### REPEAT

#### For DVDs/VCD/CD/MP3

- During playback, press repeatedly **MODE** on the system to choose desired repeat play modes. → For VCD with PBC feature, PBC must be turned off first.

#### For DVDs

**CHAPTER REPEAT:** Repeats the current chapter

**TITLE REPEAT:** Repeats the current title

**REPEAT ALL:** Plays all the content repeatedly

**SHUFFLE:** Random play

**REPEAT OFF:** Switches off play mode

#### For VCDs/SVCDs/CDs

**REPEAT TRACK:** Repeats the current track

**REPEAT ALL:** Plays all the tracks repeatedly

**SHUFFLE:** Random play

**REPEAT OFF:** Switches off play mode

#### For MP3/WMA/JPEG/DivX

**REPEAT ONE:** Repeats the current track

**REPEAT FOLDER:** Plays all the tracks in the folder repeatedly

**SHUFFLE:** Random play

**REPEAT OFF:** Switches off play mode

- To return to normal playback, press **MODE** repeatedly until "REPEAT OFF" is displayed.

#### In shuffle playback mode:

- Press ▶| button to select another track in a shuffle order.
- Press ■ to stop shuffle playback.

#### To cancel Shuffle mode:

- Press **MODE** repeatedly to select repeat off to cancel Shuffle mode.

#### Notes:

– In n Tuner, AUX 1, AUX2 mode, this button does not function.

– When the disc tray is opened, Shuffle/Repeat function will be cancelled automatically.

### Repeat A-B

You can play a specific section in a chapter/track repeatedly.

- 1 Press **A-B** at your chosen start point.
- 2 Press **A-B** again at your chosen end point. → The passage will now repeat continuously.
- 3 To resume normal play, press **A-B** again.

#### Note:

– The A-B function can only be set within the same chapter or track.

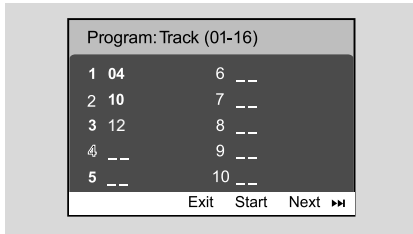


## Programming favourite chapters/tracks

You can play the contents of the disc in the order you want.

### For DVD/VCD/SVCD/CD/CDG

- 1 Press **PROG** on the remote control.  
→ The programming menu appears.



- 2 Use the **numeric keys (0-9)** to input the track /chapter number in the order you want. (two digits must be entered, e.g., 06 ).  
→ If there are more than ten tracks to be programmed in total, select **{NEXT}** on the screen and press **OK** (or press ►| on the remote control) to access the next programming page.  
→ To remove the track/chapter from the programming menu, select the track/chapter and press **OK**.
- 3 Select **{Start}** to play the program.
- 4 To stop playback, press ■ once.
- 5 To exit the program mode, press ■ twice.

### For MP3/WMA/JPEG

- 1 Press ▼ / ▲ to select a track/picture on the disc menu. Then press **PROG** to add the track/ picture to playlist.  
→ "Add To Playlist" will show on the disc menu.
- 2 Press **DISC MENU** three times.  
→ playlist menu will appear.
- 3 Press ▼ / ▲ to select a track/picture on the disc menu. Then press **PROG** to add the track/ picture to playlist.
- 3 Press ▼ / ▲ to select a track/picture and press **OK** to start playback.  
→ You can select a track/picture and press **PROG** to remove it from programme playlist.

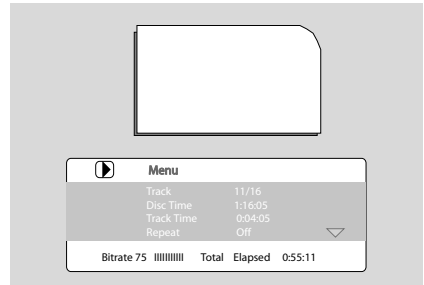
- 4 Press **STOP** to stop program playback .
- 5 Press **DISC MENU** return to disc menu.

### Notes:

- At most 20 tracks can be stored for DVD/VCD/ SVCD/CD/CDG.
- At most 100 tracks can be stored for MP3/ WMA/JPEG.

## Display information

In disc mode, press **DISPLAY/OSD** repeatedly to select the following display information.



## Moving to another title/chapter

Some discs may contain more than one title or chapter. If the disc has a title or chapter menu recorded on it, you can start playback from the selected item.

- 1 Press **DISPLAY/OSD** on the remote control to display the message of title and chapter.
- 2 Use ▼ / ▲ to highlight an item and press **OK**.
- 3 Use **numeric keys (0-9)** to select a desired title/chapter number.
- 4 Press **DISPLAY/OSD** to exit the disc information menu.

### Note:

- *Selecting a title or chapter might not be possible on certain discs.*

## Viewing from another angle

If the playing DVD disc is recorded with multiple camera angles, this function allows you to view the picture from different angles. Angle selection is determined by the disc format.

## Disc Operations

- 1 Press **DISPLAY/OSD** on the remote control to display the message of title and chapter.
- 2 Use **▼ / ▲** to highlight "Angle" and press **OK**.
- 3 Use **numeric keys (0-9)** to select desired angle.

### ZOOM

Zooming allows you to enlarge the video/ JPEG image during playback.

#### For DVDs/VCDs

- Press **ZOOM** repeatedly to change the zooming scale.  
ZOOM X 2 -->ZOOM X 3-->ZOOM X 4-->ZOOM X 1/2-->ZOOM X 1/3-->ZOOM X 1/4-->(ZOOM OFF)
- For **JPEG**
- Press **ZOOM** repeatedly to change the zooming scale.  
ZOOM X100% -->ZOOM X 125%-->ZOOM X 150%-->ZOOM X 200%-->ZOOM X 75%-->ZOOM X 50%-->(ZOOM OFF)
- To pan through the enlarged image, press **◀▶ / ▲ / ▼** buttons.
- Press **ZOOM** repeatedly to exit ZOOM mode.

### AUDIO

#### For DVDs

- On the remote control, press **AUDIO** repeatedly to select the desired language for sound track.  
→ The feature is disc dependant.

#### For VCDs

- Press **AUDIO** repeatedly to select the audio channel for sound output displayed on the TV screen.

**STEREO, MONO LEFT, MONO RIGHT**  
or **MIX MONO**

### SUBTITLE

- Press repeatedly **SUBTITLE** on the remote control to select different subtitle languages.  
→ The feature is disc dependent.

## Playing MP3/Picture disc (Kodak, JPEG)

### IMPORTANT!

– You have to turn on your TV set and set to the correct Video In channel.

### MP3/JPEG Picture disc

- 1 Load an MP3/Picture (JPEG) disc.  
→ The disc reading time may exceed 30 seconds due to complexity of the directory/file configuration.  
→ The disc menu appears on the TV
- 2 Select a track in the menu and press **OK** to start playback.



- 3 During music playback, press **▲ / ▼** or use the **numeric keys (0-9)** to select a desired picture file from the disc menu and press **OK**.  
→ If the disc main menu contains various folders, use **▲ / ▼** to select a desired folder, and press **OK** to open the folder.
- 4 Press **◀ / ▶** to select previous/next track.
- 5 To stop simultaneous playback, press **DISC MENU** followed by **STOP**.

## If the MP3 menu is switched off

- While in playback mode, press ◀ or ▶ to select the previous/next track.

Note:

– No album search function in menu off mode.

- During JPEG or Kodak Picture disc playback, press **PROG** repeatedly to select different scan effect. There are 12 types of scan effect for selection. The selected scan effect will be displayed on the TV screen.

## Playing MP3 music and JPEG pictures simultaneously

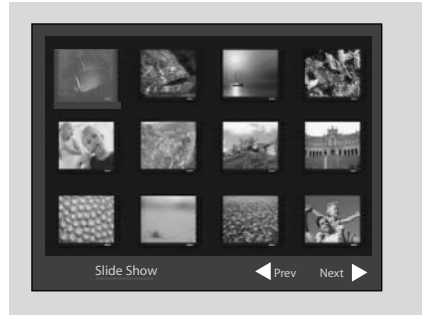
You can create a musical slide show if the disc contains both the MP3 music and JPEG picture files.

- 1 Insert a MP3/WMA disc that contains music and pictures.
- 2 Select a track in the menu and press **OK** to start playback.
- 3 During music playback, press ▼ / ▲ keys to select a desired picture file from the disc menu and press **OK**.
  - The picture files will be played back through to the end of the folder.
  - The music keeps playing back and will be repeated when reaching the end of the selected album, playlist or track.
- 4 To stop simultaneous playback, press **DISC MENU** followed by **STOP**.

## Kodak Picture disc

- 1 Load a Kodak Picture disc.
  - The disc reading time may exceed 30 seconds due to complexity of the directory/file configuration.
- 2 During playback, press ■.
  - 12 thumbnail pictures will appear on the TV screen.

(example for picture disc menu)



- 3 Press ◀ / ▶ to view the previous/next page (if available).
- 4 Press ◀◀ / ▶▶ / ▼ / ▲ to move within the menu and press **OK** to select the desired picture to play.
- 5 Press **PROG** to select the slide-show mode.

### During playback, you can:

- Press ◀ or ▶ to select another title/picture in the current folder.
- Press ◀◀ / ▶▶ / ▲ / ▼ on the remote control to rotate or flip the picture files.
- Press **ZOOM** repeatedly to zoom the picture in and out.
- Press ▶|| to pause/resume playback.

Notes:

- Due to the recording nature of Digital Audio MP3 (DAM), only digital audio music will play.
- It is normal to experience an occasional “skip” while you are listening to your MP3 discs.
- F or multi-session discs with different formats, only the first session can be read and played.

## Playing a DivX disc

The unit supports the playback of DivX movies which you can copy from your computer onto a recordable disc. See {DVD Menu Operations} - DivX(R)VOD Code for details.

- 1 Insert a DivX disc.
- 2 Use ◀◀ / ▶▶ / ▼ / ▲ keys to navigate to the title you want to play.
- 3 Press **OK** to start playback .

### During playback:

- If the DivX disc has multilingual subtitles, you can press SUBTITLE on the remote control to change the subtitle language.
- If the DivX disc has different audio tracks, you can press AUDIO on the remote control to change the audio stream.
- Press ◀◀ / ▶▶ keys on the remote control to perform fast reverse and forward.
- Press DISPLAY/OSD repeatedly until the time search menu appears, key in the time where playback should start.  
→ Playback skips to the time entered.

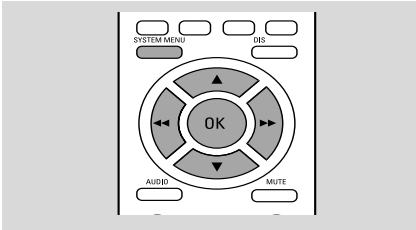
### Helpful Hints:

- Subtitle files with the following file name extensions (.srt, .smi, .sub, .ssa, .ass) are supported but do not appear on the file navigation menu.
- The subtitle file name has to be the same as the file name of the movie.
- The subtitle can only be displayed up to an average of 45 characters.

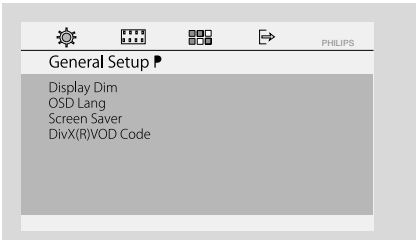
## DVD Menu Operations

### Using the setup menu (user preference settings)

This DVD setup is carried out via your TV set, enabling you to customize the DVD System to suit your particular requirements



- In disc mode, press **SYSTEM MENU**.  
→ The setup will appear across the TV screen.



- Press **◀ / ▶ / ▼ / ▲** on the remote control to navigate in the menu.
- Press **OK** to confirm your setting.

#### To remove the menu

- Press **SYSTEM MENU**.

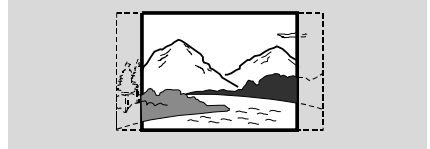
#### Note:

— Some of the features in the System Menu Options are described in “Getting Started”.

### Setting the TV Display

Set the aspect ratio of the DVD Player according to the TV you have connected.

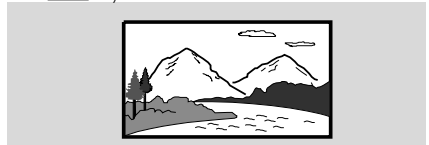
→ **4:3** (panscan): If you have a normal TV and want both sides of the picture to be trimmed or formatted to fit your TV screen.



→ **4:3** (letterbox): If you have a normal TV. In this case, a wide picture with black bands on the upper and lower portions of the TV screen will be displayed.

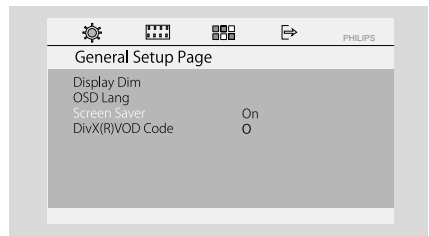


→ **16:9**: If you have a wide-screen TV.



### Screen Saver

This function is used to turn the screen saver on or off.



→ **ON**: In STOP or tray open mode, if no actions are performed about 5 minutes, the screen saver will be activated.

→ **OFF**: Screen saver is disabled.

# DVD Menu Operations

## Display Dim

Select the brightness of this unit's display panel.

- **100%**: Full brightness.
- **70%**: Medium brightness.
- **40%**: Dimmest display. This switches off all LEDs and icons on the front display panel of this unit.

## DivX(R)VOD Code

Philips provides you with the DivX(R)VOD registration code that allows you to rent or purchase videos from DivX(R) VODE service at [www.divx.com/vod](http://www.divx.com/vod). All the downloaded videos from DivX(R)VOD can only be displayed back on this unit.

Press **▶▶** to see the registration code and press **OK** to exit.

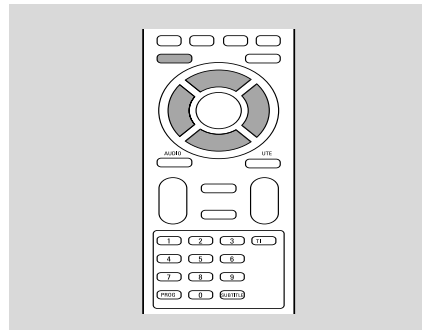
## DivX Subtitle

Select the font type that supports the recorded DivX subtitle.

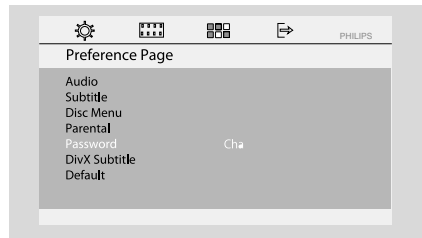
- **Standard**: Display a standard list of Roman subtitle fonts provided by this unit.
- **Central Europe**: Display Central Europe fonts.
- **Cyrillic**: Display Cyrillic font.

## Changing the password

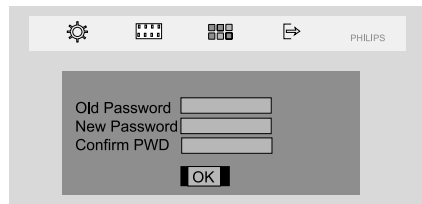
You can change the six-digit code used as Password.



- 1 In disc mode, press **SYSTEM MENU**.
- 2 Press **◀/▶** / **▼/▲** on the remote control to navigate in the menu.
  - Move to Preference page and press **▼**.
  - Move to "Password" and press **▶▶**.
  - Move to "Change" and press **OK**.



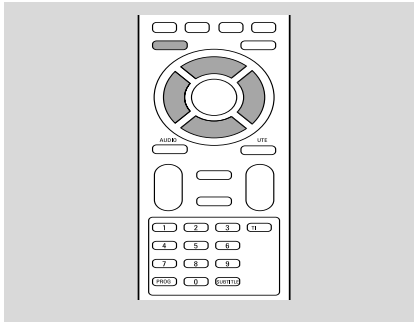
- 3 Use the **numeric keys (0-9)** to enter your current six-digit code.
  - The password supplied by default is 000000.
  - If you forget your existing password, key in the super password 136900.
- 4 Go to "Password" and enter you new code. Then, enter the same code again to confirm.



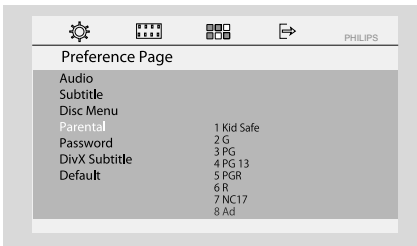
- 5 Press **SYSTEM MENU** again to remove the menu.

## Restricting playback by setting parental level

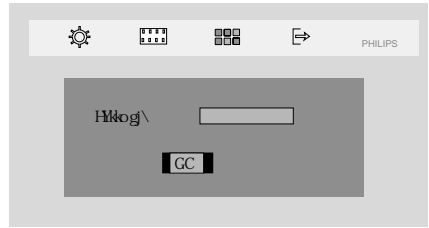
Some DVDs may have a parental level assigned to the complete disc or to certain scenes on the disc. This feature lets you set a playback limitation level. The rating levels are from 1 to 8 and are country specific. You can prohibit the playing of certain discs that are not suitable for your children or have certain discs played with alternative scenes.



- 1 In disc mode, press **SYSTEM MENU**.
- 2 Press **◀ / ▶ / ▼ / ▲** on the remote control to navigate in the menu.  
 → Move to "Preference Page" and press **▼**.  
 ▼ Move to "Parental" and press **▶▶**.



- 3 Press **▼ / ▲** to select a rating level between 1-8 and press **OK**.  
 → DVDs rated above the level you select will not play unless you enter your six-digit password or choose a higher level rating.
- 4 Use the **numeric keys (0-9)** to enter the six-digit code.



- 5 Press **SYSTEM MENU** again to remove the menu.

## Rating explanations

**8 ADULT** – material for adults only; viewed only by adults due to graphic sexual scenes, violence, or language.

**7 NC-17** – No children under age 17; not recommended for children under age 17.

**5-6 PG-R** – Parental Guidance – Restricted; recommended that parents restrict children under 17 from viewing or allow them to view only when supervised by a parent or adult guardian.

**4 PG 13** – Material is unsuitable for children under age 13.

**3 PG** – Parental Guidance suggested.

**2 G** – General Audience; recommended as acceptable for viewers of all ages.

**1 KID SAFE** – Kids material; recommended especially for children and viewers of all ages.

## – OSD LANG (menu language)

To set the screen display language. The default setting is English.

## – Default

If **RESET** is selected, all the items in the setup menu will be reset to default setting, except Parental Setting and Password.

# Tuner

## Tuning to radio stations

- 1 Press repeatedly **SOURCE** (or **TUNER** on the remote) .
- 2 Press and hold **TUNING** ◀ / ▶ on the set to start tuning.  
→ The frequency indication starts to change until a radio station with sufficient signal strength is found.
- 3 Repeat step 2 if necessary until you find the desired radio station.
- 4 To fine-tune the reception of a weak station, press ◀ / ▶ briefly and repeatedly until an optimal reception is found.

## Storing preset radio stations

You can preset up to 40 FM stations regardless of the reception.

### Manual programming

- 1 Tune to your desired radio station (refer to "Tuning to radio stations").
- 2 Press **PROG**.
- 3 Press ◀ / ▶ keys to select a preset number that you want to store the current radio station.
- 4 Press **PROG** to store.

### Autostore: automatic programming

Autostore automatically starts programming radio stations from preset 1. Any previous presets e.g. manually programmed will be erased.

- In tuner mode, press & hold **PROG** until "START..." appears on the display panel.  
→ All previously stored radio stations will be replaced.

### Listening to preset radio stations

- In tuner mode, press ◀ / ▶ to select the desired preset radio stations.  
→ The preset number, radio frequency, and waveband are displayed.

### Deleting a preset radio station

- 1 In tuner mode, press ◀ / ▶ to select a preset radio station.
- 2 Press and hold ■ until "DELETE" appears.  
→ The radio station continues to play but has been deleted from the preset list.  
→ The rest of the preset radio stations remain unchanged.



## Viewing clock

The clock (if it is set) will be shown in standby mode.

**To view the clock in any source mode (DISC or TUNER for example), or Eco-power standby mode**

- Press briefly **CLOCK** on the remote.
  - The clock is displayed for a few seconds.
  - If the clock has not been set, "--:--" is displayed for a few seconds.

## Setting clock

- 1 In standby or any source mode, press and hold **CLOCK** on the remote.
  - The clock digits flash on the display panel.
  - If the clock has not been set, "--:--" flashes
- 2 Press ◀ / ▶ on the set repeatedly to set the hour.
- 3 Press ◀◀ / ▶▶ on the set repeatedly to set the minute.
- 4 Press and hold **MODE on the front panel** for more than 5 seconds to toggle between 12-hour and 24-hour display.
- 5 Press **CLOCK** again to store the setting.
  - The clock starts working.

### Notes:

- The clock setting will be erased when the system is disconnected from the power supply.
- The system will exit clock setting mode if no button is pressed within 25 seconds.
- To exit clock setting without storing, press **STOP** on the system to exit.

## Setting wake-up timer

The system can switch on to DISC or TUNER mode automatically at a preset time, serving as an alarm to wake you up.

### IMPORTANT!

- Before setting the timer, ensure that the clock is set correctly.
- To set a new timer, you need to deactivate the previously set timer.

- 1 In standby mode, press and hold **SLEEP/TIMER** on the remote for more than five seconds to enter timer setting mode.

- The source and timer digits will be lighted on the display panel.
- " NO TIMER " will be displayed briefly if wake-up timer is not set.

- 2 Press **DISC** or **TUNER** to select the desired source.
  - Before setting timer; make sure the music source has been prepared.
  - DISC** – load the disc.
  - TUNER** – tune to the desired radio station.
- 3 Press ◀ / ▶ repeatedly to set the hour.
- 4 Press ◀◀ / ▶▶ repeatedly to set the minute.
- 5 Press **SLEEP/TIMER** to store the time.
- At the preset time, the selected source will play.

### To deactivate the wake-up timer

- In standby mode, press and hold **SLEEP/TIMER** until "TIMER OFF" is displayed on the panel.

### Notes:

- The system will exit timer setting mode if no button is pressed within 25 seconds.
- Display shows ⏰ if activated, and disappears if deactivated.

## Setting sleep timer

The sleep timer enables the system to switch off by itself after a set period of time.

- 1 Press **SLEEP/TIMER** on the remote control repeatedly to select a preset time.
  - The selections are as follows (time in minutes):  
15 → 30 → 45 → 60 → 90 → 120 → OFF
- 2 Press **SLEEP/TIMER** until you reach the desired length of time.

### To deactivate the sleep timer

- Press **SLEEP/TIMER** repeatedly until "OFF" is displayed, or press the **STANDBY ON** ⏻ button.

# Specifications

## AMPLIFIER

|                             |                             |
|-----------------------------|-----------------------------|
| Output power                |                             |
| L/R speakers .....          | 25 W /channel RMS           |
| Subwoofer .....             | 50 W RMS                    |
| Speaker channel             |                             |
| Frequency Response .....    |                             |
| .....                       | 180Hz - 18 kHz / $\pm$ 3 dB |
| Signal-to-Noise Ratio ..... | > 62dB (A-weighted)         |
| Input Sensitivity           |                             |
| AUX In 1 .....              | 800mV                       |
| AUX In 2 or TV .....        | 1000mV                      |

## TUNER

|                             |                   |
|-----------------------------|-------------------|
| Tuning Range .....          | FM 87.5 – 108 MHz |
| Signal-to-Noise Ratio ..... | FM $\geq$ 50 dB   |

## DVD

|                              |                           |
|------------------------------|---------------------------|
| Laser Type .....             | Semiconductor             |
| Disc Diameter .....          | 12cm / 8cm                |
| Video Decoding .....         | MPEG-2 / MPEG-1           |
| Video DAC .....              | 12 Bits                   |
| Signal System .....          | PAL / NTSC                |
| Video Format .....           | 4:3 / 16:9                |
| Video S/N .....              | 56 dB (minimum)           |
| Composite Video Output ..... | 1.0 Vp-p, 75 $\Omega$     |
| S-Video Output .....         | Y - 700 Vp-p, 75 $\Omega$ |
| .....                        | C - 300 Vp-p, 75 $\Omega$ |
| Audio DAC .....              | 24 Bits / 96 kHz          |

## Main unit

|                                    |                                 |
|------------------------------------|---------------------------------|
| Power Supply Rating .....          | 110-127V 220 -240V / 50 Hz-60Hz |
| Power Consumption                  |                                 |
| Active .....                       | 30 W                            |
| Eco-power standby .....            | <1 W                            |
| Dimensions (w x h x d).....        | 218 x 90 x 222 (mm)             |
| Weight .....                       | 1.24kg                          |
| Package Dimension (w x h x d)..... |                                 |
| .....                              | 550 x 314 x 330 (mm)            |
| Gross weight .....                 | 9.7kg                           |

## SPEAKERS

|                                    |                       |
|------------------------------------|-----------------------|
| System .....                       | 1-way, Bass reflex    |
| Impedance .....                    | 8 $\Omega$            |
| Speaker drivers .....              | 3" fullrange          |
| Frequency response .....           | 80 Hz – 20 kHz        |
| Package Dimension (w x h x d)..... |                       |
| .....                              | 125 x 250 x 232 (mm)  |
| Weight .....                       | 2.4 kg/left speaker   |
| .....                              | 1.76 kg/right speaker |

## SUBWOOFER


|                           |                     |
|---------------------------|---------------------|
| Impedance .....           | 6 $\Omega$          |
| Speaker driver .....      | 5.25" subwoofer     |
| Frequency response .....  | 60HZ—1K HZ          |
| Dimensions(w x h x d ) .. | 147 x 250 x 232(mm) |
| Weight .....              | 2.4kg               |

**Specifications and external appearance are subject to change without notice.**

**WARNING**

*Under no circumstances should you try to repair the system yourself, as this will invalidate the warranty. Do not open the system as there is a risk of electric shock.*

*If a fault occurs, first check the points listed below before taking the system for repair. If you are unable to remedy a problem by following these hints, consult your dealer or Philips for help.*

| Problem   | Solution  |
|---|---|
| <b>No power.</b>  | <ul style="list-style-type: none"> <li>✓ Check if the AC power cord is properly connected.</li> <li>✓ Press STANDBY ON  on the DVD System or source buttons on the remote to turn on the power.</li> </ul>   |
| <b>No picture.</b>  | <ul style="list-style-type: none"> <li>✓ Check if the TV is switched on.</li> <li>✓ Check the video connection.</li> <li>✓ Press SOURCE on the DVD player repeatedly to select "DVD" or press DISC on the remote.</li> <li>✓ Set your TV to the correct Video In channel. This channel is usually near channel 00. Or; you may have a button on the TV remote control that selects Auxiliary or A/V IN channel. See your TV owner's manual for details. Or, change channels at the TV until you see DVD screen on the TV.</li> <li>✓ If the progressive scan feature is activated but the connected TV does not support progressive signals or the cables are not connected accordingly, see "Getting Started-Setting up Progressive Scan feature (for Progressive Scan TV only)" for proper progressive scan setup or deactivate the progressive scan feature as below:               <ol style="list-style-type: none"> <li>1) Turn off your TV progressive scan mode or turn on to interlaced mode.</li> <li>2) Select "OFF" in PROGRESSIVE menu of system setup menu to turn off progressive, then press SYSTEM MENU to exit the menu.</li> </ol> </li> </ul> |
| <b>Distorted or poor picture.</b>                           | <ul style="list-style-type: none"> <li>✓ Sometimes a small amount of picture distortion may appear. This is not a malfunction.</li> <li>✓ Clean the disc.</li> </ul>  |
| <b>Completely distorted picture or black/white picture.</b> | <ul style="list-style-type: none"> <li>✓ TV has a colour system standard. If the disc's or DVD system's colour system is different than your TV's colour system, the picture may be distorted or colourless.</li> </ul>   |

# Troubleshooting

**The aspect ratio of the screen cannot be changed even though you have set the TV shape.**

- ✓ The aspect ratio is fixed on the DVD disc.
- ✓ Depending on the TV, it may not be possible to change the aspect ratio.

**No sound or distorted sound.**

- ✓ Adjust the volume.
- ✓ Check that the speakers are connected correctly.
- ✓ Replace the speaker cables.
- ✓ Disconnect the headphones.
- ✓ The system is in pause, slow motion or fast forward/reverse mode, press ► || (or ► ||| on the remote) to resume normal play mode.

**The micro DVD player does not start playback.**

- ✓ Insert a readable disc with the playback side facing down.
- ✓ Check the disc type, colour system and regional code. Check for any scratches or smudges on the disc.
- ✓ Press SYSTEM MENU to turn off the setup menu screen.
- ✓ Cancel the parental control rating function or change the rating level.
- ✓ Moisture has condensed inside the system. Remove the disc and leave the system turned on for about an hour.

**The DVD micro system does not respond when the buttons are pressed.**

- ✓ Disconnect the power plug from the outlet and insert again.

**Cannot activate some features, such as Subtitles, or multi-language Audio.**

- ✓ Multi-language sound or subtitle is not recorded on the DVD.
- ✓ Changing the language for the sound or subtitle is prohibited on the DVD.
- ✓ The features may not be available on the disc.

**Radio reception is poor.**

- ✓ If the signal is too weak, adjust the antenna or connect an external antenna for better reception.
- ✓ Increase the distance between the Mini HiFi System and your TV or VCR.

**The timer is not working.**

- ✓ Set the clock correctly.

**The Clock/Timer setting is erased.**

- ✓ Power has been interrupted or the power cord has been disconnected. Reset the clock/timer.

**The remote control does not function.**

- ✓ Select the correct source (DISC or AUX1/2 for example) before pressing the function button.
- ✓ Point the remote control at the remote sensor of the unit.
- ✓ Reduce the distance to the player.
- ✓ Remove any possible obstacles.
- ✓ Replace the battery with new one.
- ✓ Check that the battery is loaded correctly.

**Low hum or buzz sound.**

- ✓ Place the DVD micro system as far away as possible from electrical devices (such as speakers, TV) that may be causing interference.

**Low bass response.**

- ✓ Check all speakers for correct polarity.

**Unable to select Progressive Scan**

- ✓ Check that the output of the video signal is switched to 'Ypbpr'.

**Analog:** Sound that has not been turned into numbers. Analog sound varies, while digital sound has specific numerical values. These jacks send audio through two channels, the left and right.

**Aspect ratio:** The ratio of vertical and horizontal sizes of a displayed image. The horizontal vs. vertical ratio of conventional TVs is 4:3, and that of wide-screens is 16:9.

**AUDIO OUT Jacks:** Jacks on the back of the DVD System that send audio to another system (TV set, Stereo, etc.).

**Bit Rate:** The amount of data used to hold a given length of music; measured in kilobits per second, or kbps. Or, the speed at which you record. Generally, the higher the bit rate the better the sound quality. However, higher bit rates use more space on a Disc.

**Chapter:** Sections of a picture or a music piece on a DVD that are smaller than titles. A title is composed of several chapters. Each chapter is assigned a chapter number enabling you to locate the chapter you want.

**Component Video Out Jacks:** Jacks on the back of the DVD System that send high-quality video to a TV set that has Component Video In jacks (R/G/B, Y/Pb/Pr, etc.).

**Disc menu:** A screen display prepared for the selection of images, sound, subtitles, multi-angles, etc recorded on a DVD.

**Digital:** Sound that has been converted into numerical values. Digital sound is available when you use the DIGITAL AUDIO OUT COAXIAL or OPTICAL jacks. These jacks send audio through multiple channels, instead of just two channels as analog does.

**Dolby Digital:** A surround sound system developed by Dolby Laboratories containing up to six channels of digital audio (front left and right, surround left and right and center).

**JPEG:** A still-picture data compression system proposed by the Joint Photographic Expert Group, which features small decrease in image quality in spite of its high compression ratio.

**MP3:** A file format with a sound data compression system, "MPE" is the abbreviation of Motion Picture Experts Group 1 (or MPEG-1) Audio Layer 3. Through the MP3 format, one CD-R or CD-RW can contain about 10 times as much data volume as a regular CD can.

**Multichannel:** DVD is specified to have all sound tracks constitute one sound field. Multichannel refers to a structure of sound tracks having three or more channels.

**Parental control:** A function of the DVD to limit playback of the disc by the age of the users according to the limitation level in each country. The limitation varies from disc to disc; when it is activated, playback will be prohibited if the software's level is higher than the user-set level.

**PCM (Pulse Code Modulation):** A system for converting analog sound signal to digital signal for later processing without data compression.

**Playback control (PBC):** Refers to the signal recorded on video CDs or SVCDs for reproduction control. By using screen menus recorded on a Video CD or SVCD that supports PBC, you can enjoy interactive-type software as well as software having a search function.

**Progressive Scan (P-Scan):** It displays all the horizontal lines of a picture at one time, as a signal frame. This system can convert interlaced video from DVD into progressive format for connection to a progressive display. It dramatically increases the vertical resolution. A progressive scan TV set is needed to receive progressive scan output from the system.

**Region code:** A system allowing discs to be played only in preset regions. This unit will only play discs that have compatible region codes. You can find the region code of your unit from the product label. Some discs are compatible with more than one region (or ALL regions).

**S-Video:** Produces a clear picture by sending separate signals for luminance and the color. You can use S-Video only if your TV set has S-Video In jack.

**Sampling Frequency:** Frequency of data sampling when analog data is converted to digital data. Sampling frequency numerically represents how many times the original analog signal is sampled per second.

**Surround:** A system for users to create realistic three-dimensional sound fields full of realism by arranging multiple speakers around the listener.

**Title:** The longest section of a picture or music feature on DVD, music, etc., in video software, or the entire album in audio software. Each title is assigned a title number enabling you to locate the title you want.

**VIDEO OUT jack:** Jack on the back of the DVD System that sends video to TV.