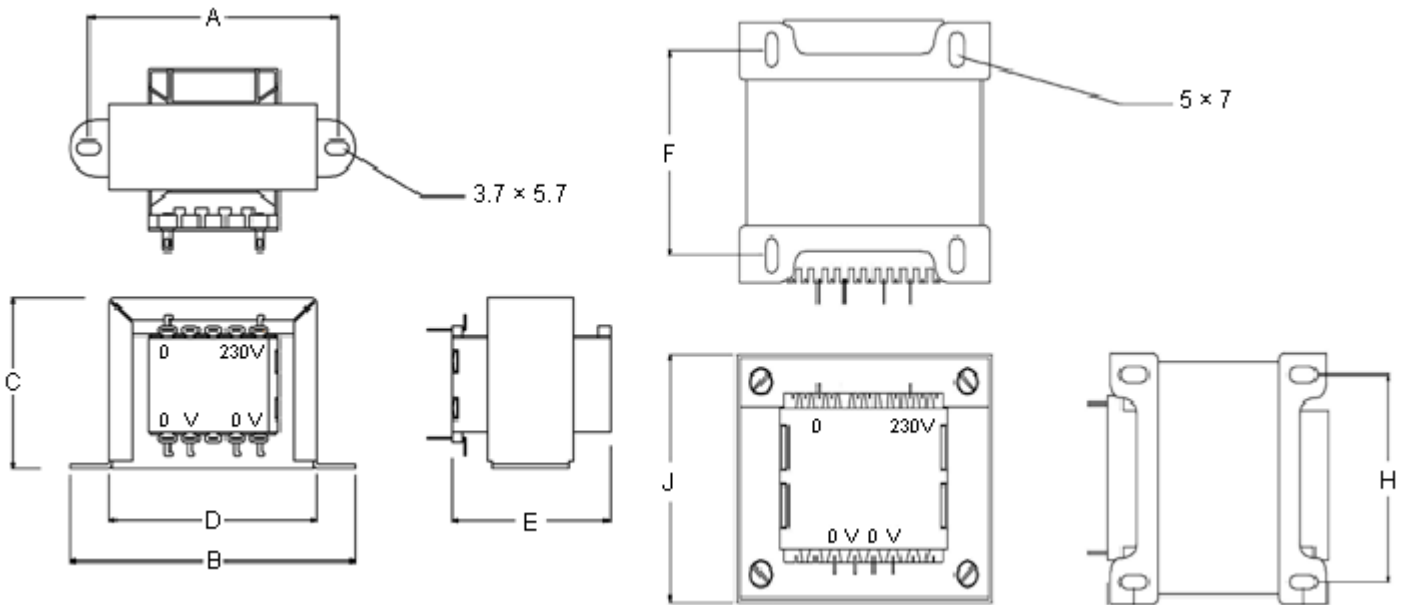
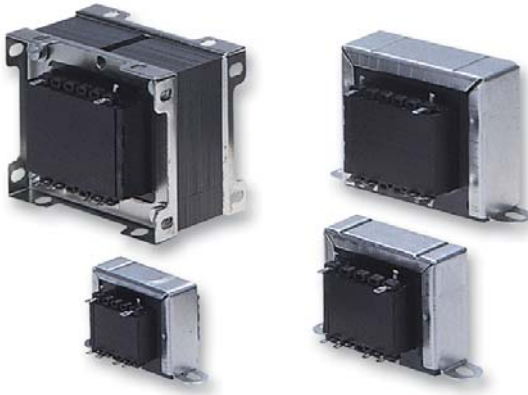


Transformers

Chassis Mount

Features:

- Single 230 V primary windings
- Double section metric bobbins
- Power : 6 to 200 VA, 50 / 60 Hz
- Temperature class : B (130°C)
- Dielectric strength : 3,750 V_{rms}
- Manufactured and tested in accordance with EN60950 and EN61558



Dimensions : Millimetres

Specifications:

Maximum winding temperature	: 55°C
Overall insulation rating	: > 50 MΩ (at 500 V, 20°C)
Flash test (isolation test)	: Primary / secondary / lamination 2.4 kV _{rms}
Winding wire	: Polyurethane coated IEC317 grade 1
Tape	: 3M no 56 or 36M no 1350Y thermosetting
Core	: 400 / 50
Finish	: Ultimeg 3.72 clear

Dimension Table

Dimensions													
VA Rating	Reg%	A	B	C	D	E	F	G	H	I	J	K	Weight (g)
6	24	55	68	37	45	36	-	-	-	-	-	-	170
12	16	74	90	50	60	45							390
20	12					52							530
50	9	94	106	65	79	53							985

Dimensions : Millimetres

Transformers

Chassis Mount

Dimension Table

Dimensions													
VA Rating	Reg%	A	B	C	D	E	F	G	H	I	J	K	Weight (g)
100	10	-	-	-	-	-	45	57	57	89	75	65	1,550
150	9						68	72	56	102	85	85	2,750
200	8												
Tolerance	2	±1											approximate

Dimensions : Millimetres

Specifications Table

Description	VA	Output V _{ac}	Part Number
Transformer, 6 VA, 2 × 5 V	6	2 × 5	CTFCS6-5
Transformer, 6 VA, 2 × 6 V		2 × 6	CTFCS6-6
Transformer, 6 VA, 2 × 9 V		2 × 9	CTFCS6-9
Transformer, 6 VA, 2 × 12 V		2 × 12	CTFCS6-12
Transformer, 6 VA, 2 × 15 V		2 × 15	CTFCS6-15
Transformer, 6 VA, 2 × 18 V		2 × 18	CTFCS6-18
Transformer, 6 VA, 2 × 20 V		2 × 20	CTFCS6-20
Transformer, 6 VA, 2 × 24 V		2 × 24	CTFCS6-24
Transformer, 12 VA, 2 × 6 V	12	2 × 6	CTFCS12-6
Transformer, 12 VA, 2 × 9 V		2 × 9	CTFCS12-9
Transformer, 12 VA, 2 × 12 V		2 × 12	CTFCS12-12
Transformer, 12 VA, 2 × 20 V		2 × 20	CTFCS12-20
Transformer, 12 VA, 2 × 24 V		2 × 24	CTFCS12-24
Transformer, 20 VA, 2 × 6 V	20	2 × 6	CTFCS20-6
Transformer, 20 VA, 2 × 9 V		2 × 9	CTFCS20-9
Transformer, 20 VA, 2 × 12 V		2 × 12	CTFCS20-12
Transformer, 20 VA, 2 × 15 V		2 × 15	CTFCS20-15
Transformer, 20 VA, 2 × 18 V		2 × 18	CTFCS20-18
Transformer, 20 VA, 2 × 20 V		2 × 20	CTFCS20-20
Transformer, 20 VA, 2 × 24 V		2 × 24	CTFCS20-24
Transformer, 50 VA, 2 × 6 V	50	2 × 6	CTFCS50-6
Transformer, 50 VA, 2 × 12 V		2 × 12	CTFCS50-12
Transformer, 50 VA, 2 × 15 V		2 × 15	CTFCS50-15
Transformer, 50 VA, 2 × 18 V		2 × 18	CTFCS50-18
Transformer, 50 VA, 2 × 24 V		2 × 24	CTFCS50-24