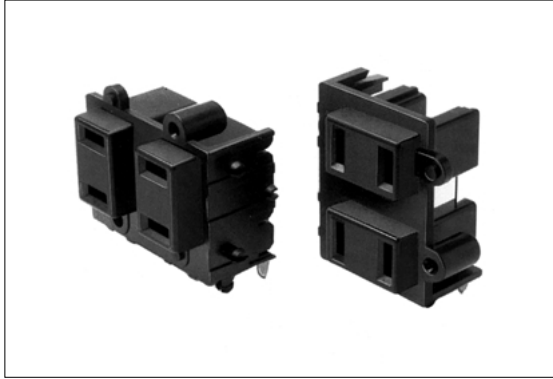
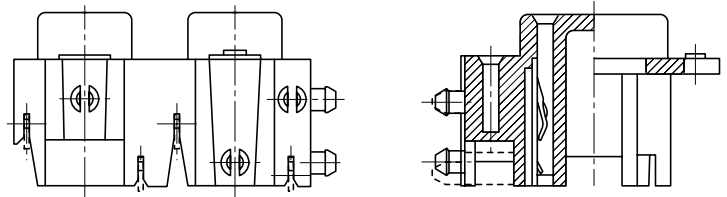
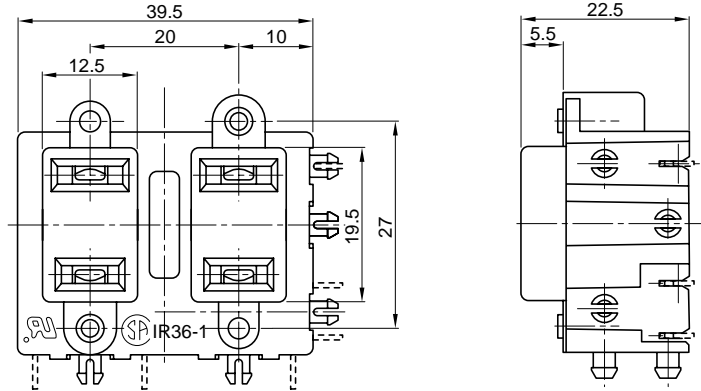


POWER CONNECTOR



CCT 1304-□□□□

Serial No.
 0 : Horizontal
 1 : Vertical
 01 : Non-polarized (neutral)
 02 : Polarized



2-Section AC Outlet (PS-2 Series)

Specifications

1. Rating : 15A 125V AC
2. Contact Resistance : 50mΩ max.
3. Insulation Resistance : 300MΩ min. at 500V DC
4. Withstanding Voltage : 2000V AC for one minute
5. Operating Temperature : -20°C to +80°C
6. Main Unit Material : Polyphenylene Oxide (Black) 94V-1

Approval Standards:

UL
 CSA (02 for polarized models only)

NOTE

1. Independent structure from the printed circuit board.
2. Can be fixed to the chassis with two tapping screws.
1. プリント基板に自立する構造です。
2. シャーシには2ヶ所でタッピンねじ固定ができます。

Mounting Direction	Product No.	Terminal Layout	P.C.Board Dimension (Top View)	Mounting Holes for Panel
Horizontal	01			
	02			
Vertical	11			
	12			