

PRODUCT NUMBER

5 2 6 0 1 - X X X - X X X X LF

PLATING

S=15µ"[0.38µm]GOLD ON CONTACT AREA (NOTE 13)  
100µ"[2.54µm]TIN ON TAIL  
G=30µ"[0.76µm]GOLD ON CONTACT AREA (NOTE 13)  
100µ"[2.54µm]TIN ON TAIL

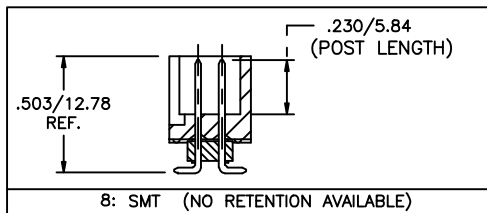
LEAD FREE OPTION NOTE 10,11,12  
PACKAGE NOTE 5

RETENTION R= RETENTIVE LEG (NOTE 6)

POLARIZATION NOTE 9

TAIL		
+	.090/2.29	OBS.
-	.142/2.84	OBS.
4	.120/3.05	
6	.150/3.81	
-	.675/17.15	OBS.
8	SMT	

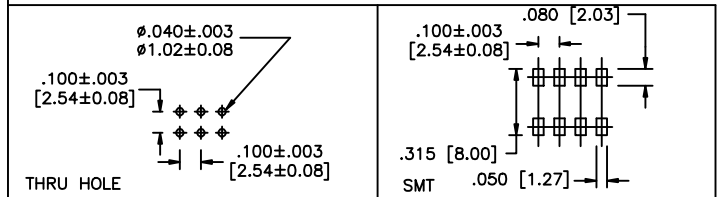
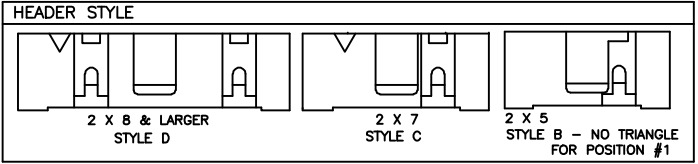
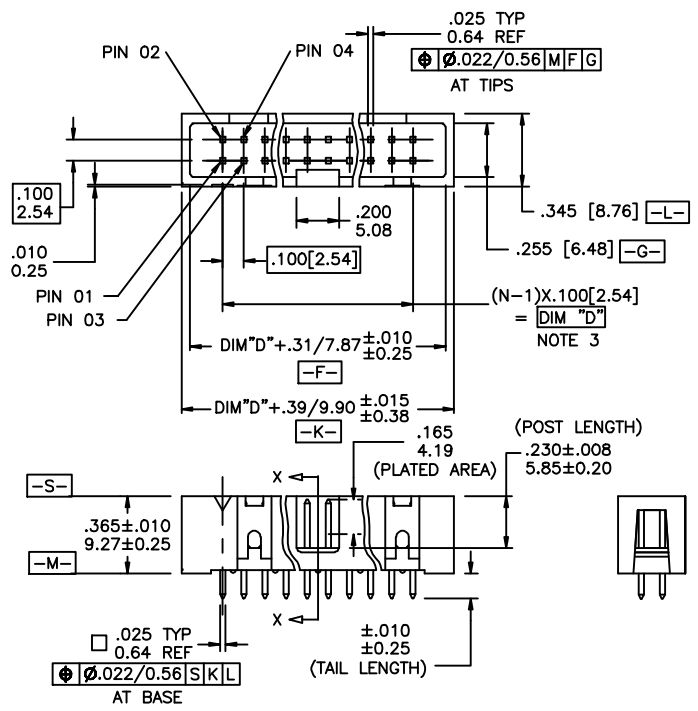
	TOTAL POSITIONS	HDR. STYLE
10	2 x 5	B
14	2 x 7	C
16	2 x 8	D
20	2 x 10	D
26	2 x 13	D
30	2 x 15	D
34	2 x 17	D
40	2 x 20	D
44	2 x 22	D
50	2 x 25	D
60	2 x 30	D



NOTES:

- HOUSING MAT'L: HIGH TEMPERATURE THERMOPLASTIC. UL94V-0  
COLOR: BLACK  
OR  
MINERAL FILLED LCP FLAME RETARDANT  
PER UL-94V-0. COLOR: BLACK.
- PIN MATERIAL: PHOSPHOR-BRONZE
- TO DETERMINE DIMENSIONS:  
N = NUMBER OF POSITIONS PER ROW  
EXAMPLE: 10 POS.,(N-1) x .100[2.54]=.900[22.86]
- 3 LBS./1.36 KG MIN. RETENTION
- PACKAGED IN TRAYS,  
PART NUMBER FOLLOWS BY "T" SUFFIX ARE PACKAGED  
TAPE ON REEL WITH PACK-UP INSTALLED. VACUUM CAP TO BE  
CENTRALLY LOCATED REGARDLESS OF NUMBER OF POSITIONS (SHEET 3)
- RETENTIVE LEG APPLICABLE TO TAIL LENGTHS .125/3.18 MAX.  
5LB/2.3KG MAX INSERTION FORCE AND .25LB./1KG MIN RETENTION FORCE  
PER RETENTIVE PIN USING .062/1.57 THICK CIRCUIT BOARD AND RECOMMENDED  
HOLE PATTERN. RETENTIVE LOCATION AT THE DISCRETION OF THE MANUFACTURER.  
RETENTION PIN MAY BE SHIFTED TO NEXT POSITION.
- OMIT FROM PRODUCT NUMBER IF THIS FEATURE IS NOT APPLICABLE.
- UNDERPLATING: 50µ"/1.27µm Ni.
- FOR POLARIZATION SPECIFY POSITION NUMBER (i.e. 03 = PIN 3) TO OMIT PIN.  
OMIT FROM PRODUCT NUMBER IF THIS FEATURE IS NOT APPLICABLE.
- ADD "Lf" SUFFIX AT THE END OF PART NUMBER FOR LEAD FREE OPTION.
- THE HOUSING WILL WITHSTAND EXPOSURE TO 260°C PEAK TEMPERATURE  
FOR 15 SECONDS IN A WAVE SOLDER APPLICATION WITH A 1.5mm  
MINIMUM THICK CIRCUIT BOARD. SEE APPLICATION NOTES/PROCEDURES  
IF THEY ARE AVAILABLE.  
  
THE HOUSING WILL WITHSTAND EXPOSURE TO 260°C PEAK TEMPERATURE  
FOR 20 SECONDS IN A CONVECTION, INFRA-RED OR VAPOR PHASE  
REFLOW OVEN. SEE APPLICATION NOTES/PROCEDURES IF THEY ARE AVAILABLE.
- THIS PRODUCT MEETS EUROPEAN UNION DIRECTIVES AND OTHER  
COUNTRY REGULATION AS DESCRIBED IN GS-22-008.
- PLATING OPTIONS:  
MAY BE EITHER GOLD OR GXT PLATED AT MANUFACTURER'S OPTION.

mat'l. code		surface ISO 902	tolerance ISO 406 ISO 1101	projection	product family QUICKIE
ltr	ecn no	dr	date	tolerances unless otherwise specified	title
P	M07-0185	MHT	4/16/07	angles	.100/2.54mm LOW PROFILE SHOROUDED VERTICAL HEADER
R	M08-001d	MHT	1/11/07	linear	
S	M08-0117	MHT	4/24/08	0°±2'	scale 1:1
T	M08-0118	MHT	4/22/08	dr	D. INGRAM 7/7/99
U	M08-0237	MHT	5/25/08	engr	L. GREEN 7/12/99
V	M08-0261	MHT	8/19/08	chr	L. GREEN 7/12/99
W	M08-0279	MHT	9/30/08	appd	L. GREEN 7/21/99
sheet	revision	w	w	w	dwg no
index	sheet	1	2	3	52601
					sheet 1 of 3 size A3
					type Product Customer Drawing



mat'l. code		surface	tolerance	projection	product family
ltr	ecn no	ISO 902	ISO 406 ISO 7101	ISO 10	QUICKIE
dr	date	tolerances unless otherwise specified		INCH/MM	title
w		angles	linear		
		0' ± 2'	XXX ± .01 / XXX ± 0.3 XXX ± .005 / XXX ± 0.13 XXX ± .0020 / XXX ± 0.05		.100/2.54mm LOW PROFILE SHROUDED VERTICAL HEADER
dr	D. INGRAM	7/7/99			dwg no
engr	L. GREEN	7/12/99			sheet 2 of 3
chr	L. GREEN	7/12/99			size
appd	L. GREEN	7/21/99			A3
sheet index	revision sheet				type Product Customer Drawing

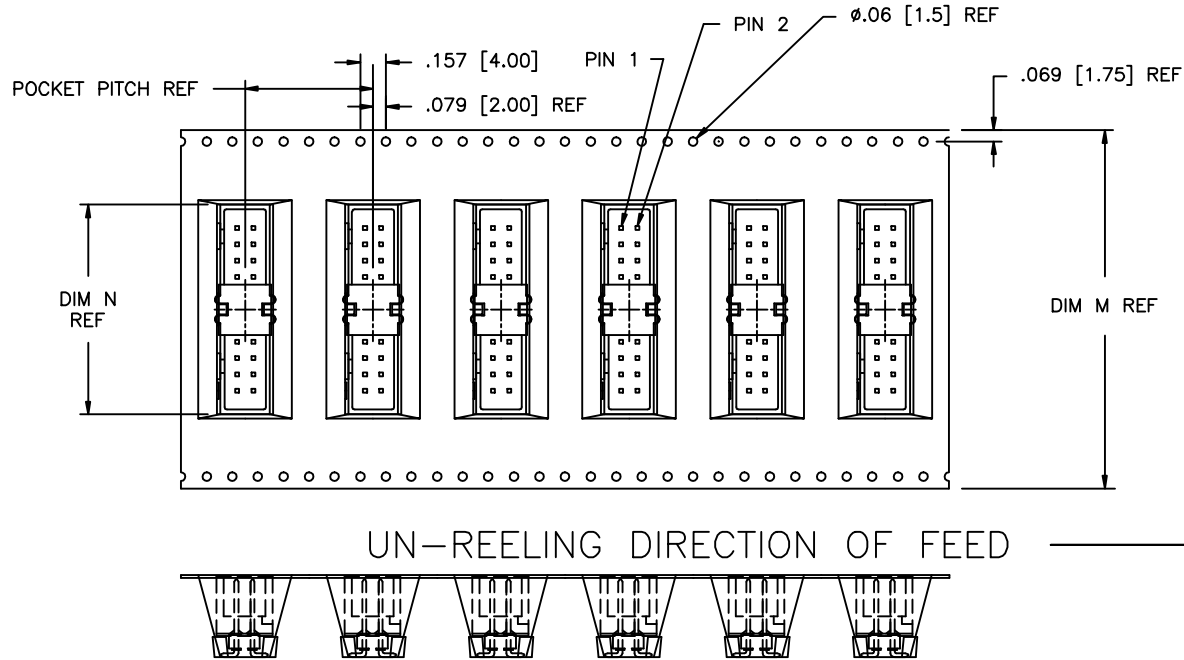


Copyright FCJ

Form A3

PRODUCT No. NOTE 10	NO. OF POSITIONS	HSG. STYLE	POLARIZED POSITION	PACKAGING	POCKET PITCH	DIM M	DIM N
52601-S10-801T	2 X 5	B	01	TAPE-ON-REEL	0.787/20.00	1.260/32.00	0.790/20.07
52601-S10-805T	2 X 5	B	05	TAPE-ON-REEL	0.787/20.00	1.260/32.00	0.790/20.07
52601-S10-807T	2 X 5	B	07	TAPE-ON-REEL	0.787/20.00	1.260/32.00	0.790/20.07
52601-S14-807T	2 X 7	C	07	TAPE-ON-REEL	0.787/20.00	1.732/44.00	1.090/27.69
52601-S14-80714T	2 X 7	C	07,14	TAPE-ON-REEL	0.787/20.00	1.732/44.00	1.090/27.69
52601-X16-8T	2 X 8	D	-	TAPE-ON-REEL	0.787/20.00	1.732/44.00	1.090/27.69
52601-X20-8T	2 X 10	D	-	TAPE-ON-REEL	0.787/20.00	2.204/56.00	1.290/32.77
52601-X30-8T	2 X 15	D	-	TAPE-ON-REEL	0.787/20.00	2.834/72.00	1.786/45.37

\* SPECIAL CUSTOMER



mat'l. code	surface ISO 1302	tolerance ISO 406 ISO 2101	projection	product family QUICKIE
ltr	ecn no	dr	date	title .100/2.54mm LOW PROFILE SHOROUDED VERTICAL HEADER
w				scale 1:1
	angles	linear	XXX±.01/XXX±.03 XXX±.006/XXX±.013 XXX±.0020/XXX±.0051	INCH/MM
	0'±2'	dr	D. INGRAM 7/7/99	dwg no 52601 sheet 3 of 3 size A3
		engr	L. GREEN 7/12/99	type Product Customer Drawing
		chr	L. GREEN 7/12/99	
		appd	L. GREEN 7/21/99	
sheet index	revision sheet			