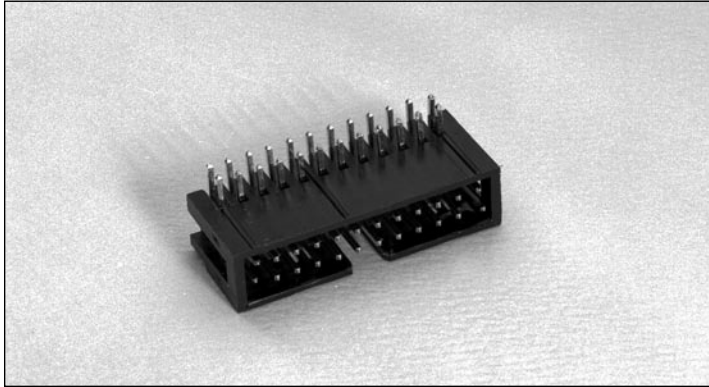


.100" (2.54mm) Dual Row, Through Hole, Right Angle, Polarizing Shrouded Header



9100 SERIES ("POST/BOXE")

PART NUMBER LEGEND

91XX-41-2XX-01

NUMBER OF POSITIONS
(SEE TABLE)

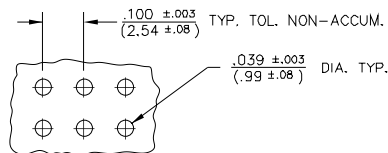
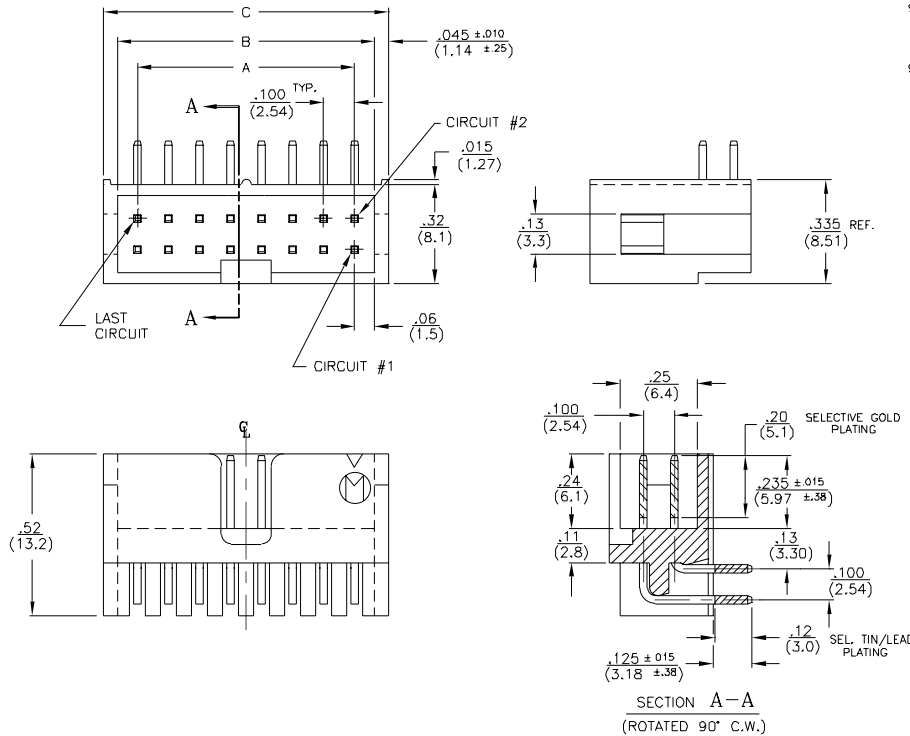
PIN PLATING
(SEE NOTE 3)

INSULATOR MATERIAL
(SEE NOTE 2)

MATING CONNECTORS: 9000 SERIES & 9300-6XX/7XX SERIES

NOTES:

- ALL DIMENSIONS ARE IN./.(MM.)
- INSULATOR MATERIAL : 9100-40-2XX-01; POLYESTER (PBT), 30% GLASS FILLED, UL94V-0
9110-40-2XX-01; POLYESTER (PCT), 30% GLASS FILLED, UL94V-0
- PIN MATERIAL : PHOSPHOR BRONZE.
- PIN FINISH :
9100 - TIN/LEAD OVER NICKEL PLATE.
9108 - .000050 NICKEL PLATE ALL OVER;
.000030 SELECTIVE GOLD IN MATING AREA, .0001-.0002 SEL. TIN/LEAD ON SOLDER TAIL.
910E - .000050 NICKEL PLATE ALL OVER;
.000015 SELECTIVE GOLD IN MATING AREA, .0001-.0002 SEL. TIN/LEAD ON SOLDER TAIL.



PART NO.	No OF CIRCUITS	A ±.005 (±.13)	B ±.010 (±.25)	C ±.010 (±.25)
910X-41-202-01	4	.100 (2.54)	.220 (5.59)	.310 (7.87)
↑ -203- ↓	6	.200 (5.08)	.320 (8.13)	.410 (10.41)
↑ -204- ↓	8	.300 (7.62)	.420 (10.67)	.510 (12.95)
↑ -205- ↓	10	.400 (10.16)	.520 (13.21)	.610 (15.49)
↑ -206- ↓	12	.500 (12.70)	.620 (15.65)	.710 (18.03)
↑ -207- ↓	14	.600 (15.24)	.720 (18.29)	.810 (20.57)
↑ -208- ↓	16	.700 (17.78)	.820 (20.83)	.910 (23.11)
↑ -209- ↓	18	.800 (20.32)	.920 (23.37)	1.010 (25.65)
↑ -210- ↓	20	1.000 (25.40)	1.220 (30.91)	1.110 (28.19)
↑ -211- ↓	22	1.200 (30.48)	1.420 (36.05)	1.210 (30.73)
↑ -212- ↓	24	1.400 (35.56)	1.620 (41.15)	1.310 (33.27)
↑ -213- ↓	26	1.600 (40.64)	1.820 (46.25)	1.410 (35.81)
↑ -214- ↓	28	1.800 (45.72)	2.020 (51.31)	1.510 (38.35)
↑ -215- ↓	30	2.000 (50.80)	2.220 (56.39)	1.610 (40.89)
↑ -216- ↓	32	2.200 (55.88)	2.420 (61.47)	1.710 (43.43)
↑ -217- ↓	34	2.400 (60.96)	2.620 (66.55)	1.810 (45.97)
↑ -218- ↓	36	2.600 (66.04)	2.820 (71.63)	1.910 (48.51)
↑ -219- ↓	38	2.800 (71.12)	3.020 (76.71)	2.010 (51.05)
↑ -220- ↓	40	3.000 (76.20)	3.220 (81.79)	2.110 (53.59)
↑ -221- ↓	42	3.200 (81.28)	3.420 (86.87)	2.210 (56.13)
↑ -222- ↓	44	3.400 (86.36)	3.620 (91.95)	2.310 (58.67)
↑ -223- ↓	46	3.600 (91.44)	3.820 (97.03)	2.410 (61.21)
↑ -224- ↓	48	3.800 (96.52)	4.020 (102.11)	2.510 (63.75)
↑ -225- ↓	50	4.000 (101.60)	4.220 (107.19)	2.610 (66.29)
↑ -226- ↓	52	4.200 (106.68)	4.420 (112.27)	2.710 (68.83)
↑ -227- ↓	54	4.400 (111.76)	4.620 (117.35)	2.810 (71.37)
↑ -228- ↓	56	4.600 (116.84)	4.820 (122.43)	2.910 (73.91)
↑ -229- ↓	58	4.800 (121.92)	5.020 (127.51)	3.010 (76.45)
↑ -230- ↓	60	5.000 (127.00)	5.220 (132.59)	3.110 (78.99)
↑ -231- ↓	62	5.200 (132.08)	5.420 (137.67)	3.210 (81.53)
↑ -232- ↓	64	5.400 (137.16)	5.620 (142.75)	3.310 (84.07)
↑ -233- ↓	66	5.600 (142.24)	5.820 (147.83)	3.410 (86.61)
↑ -234- ↓	68	5.800 (147.32)	6.020 (152.91)	3.510 (89.15)
↑ -235- ↓	70	6.000 (152.40)	6.220 (157.99)	3.610 (91.69)
↑ -236- ↓	72	6.200 (157.48)	6.420 (163.07)	3.710 (94.23)
↑ -237- ↓	74	6.400 (162.56)	6.620 (168.15)	3.810 (96.77)
↑ -238- ↓	76	6.600 (167.64)	6.820 (173.23)	3.910 (99.31)
↑ -239- ↓	78	6.800 (172.72)	7.020 (178.31)	4.010 (101.85)
↑ -240- ↓	80	7.000 (177.80)	7.220 (183.39)	4.110 (104.39)