

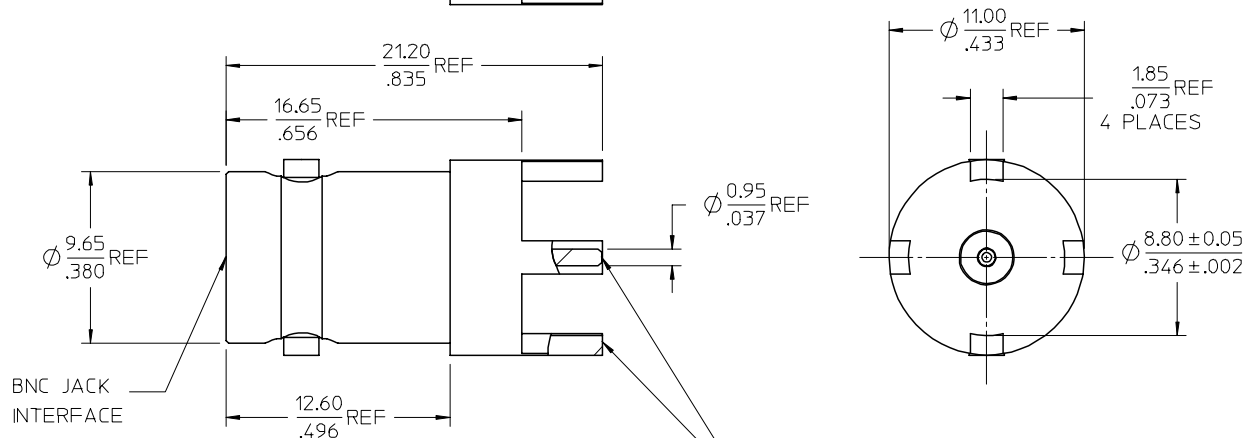
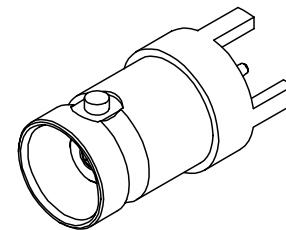
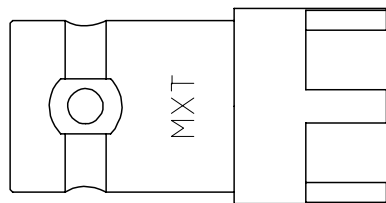
MATERIALS AND FINISHES

BODY: BRASS
PLATED NICKEL

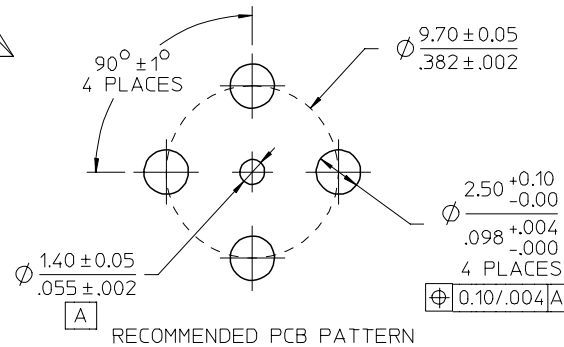
CENTER CONTACT: PHOSPHOR BRONZE
PLATED GOLD

INSULATOR: TEFLON

PRESS RING: BRASS
PLATED NICKEL



THE TIP OF THE CENTER CONTACT IS REFERENCED FLUSH TO THE LEGS



PS-73598-0061	ELECTRO/MECH PERFORM
SPECIFICATION	DESCRIPTION

73171-3050	73100-0153, ONE PER BAG
73100-0153	BULK PACK WITH PLASTIC BAG
PART NO.	PACKAGING

CHG: UPDATED TO SHOW USE OF PRESS RING. EC NO: URF2007-0403 DRAWN: ARROBERTSON 2007/04/09 CHKD: 2007/04/09 APPR: JIM ENEER 2007/04/09 REV: DESCRIPTION	QUALITY SYMBOLS
	$\nabla=0$
	$\nabla=0$

GENERAL TOLERANCES (UNLESS SPECIFIED)	DIMENSION STYLE	SCALE	DESIGN UNITS	THIRD ANGLE PROJECTION
mm INCH	MM/IN		METRIC	
4 PLACES ± --- ± ---	DRAWN BY DATE	TITLE		
3 PLACES ± --- ± ---	FIELDS 1994/08/29	BNC JACK, VERTICAL PCB		
2 PLACES ± --- ± ---	CHECKED BY DATE	50 OHMS		
1 PLACE ± --- ± ---	APPROVED BY DATE	BNC-J/PCB		
ANGULAR ± 2 °	MATERIAL NO.	MOLEX INCORPORATED		
DRAFT WHERE APPLICABLE MUST REMAIN WITHIN DIMENSIONS	SEE TABLE	DOCUMENT NO.	SHEET NO.	
		SD-73100-0153	1 OF 1	
	SIZE C	THIS DRAWING CONTAINS INFORMATION THAT IS PROPRIETARY TO MOLEX INCORPORATED AND SHOULD NOT BE USED WITHOUT WRITTEN PERMISSION		