

TT® TELEPHONE SWITCHES AND LAMP JACKS

TT-SWITCHES

TT-Switches are interchangeable with TT-Lamp jacks and TT-Jax® in miniature jack panels. Contacts are crossbar palladium rated at 2A, 200 W maximum AC non-inductive load. Fine silver (higher currents) and gold alloy (dry circuits) contacts are available (special order). Rear mount Series TT300 (solder lugs) and WTT300 (wire-wrapping) mount in 1600, A1600, B1600 and C1600 miniature jack panels. Front mount Series TT300FM (solder lugs) and WTT300FM (wire-wrapping) mount in TT51, TT52, TT55 and TT56 miniature jack panels. Materials are the same as TT-Jax®, except knob is white plastic.

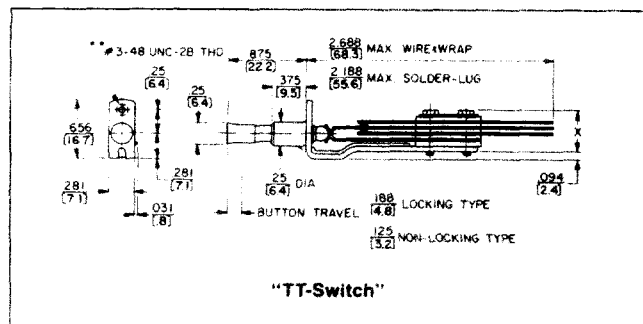
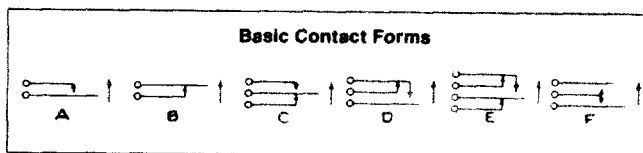
SOLDER LUGS

| Part Number | | | | Dim. "X" maximum Inch (mm) | Sche- matic |
|---------------------------|----------|-----------------|---------|----------------------------------|----------------|
| Push-Lock Pull-Release | | Non- Locking | | | |
| TT301L | TT301LFM | TT301 | TT301FM | .469 (11.9) | 1-A |
| TT303L | TT303LFM | TT303 | TT303FM | .5 (12.7) | 1-C |
| TT306L | TT306LFM | TT306 | TT306FM | .688 (17.5) | 2-C |
| TT307L | TT307LFM | TT307 | TT307FM | .734 (18.8) | 3-A |

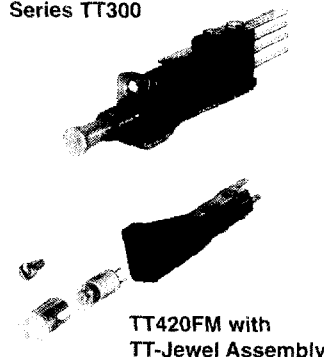
WIRE-WRAPPING TERMINALS (schematics same as above)

| Push-Lock Pull-Release | | Non- Locking | | Dim. "X" maximum Inch (mm) |
|---------------------------|-----------|-----------------|----------|----------------------------------|
| WTT301L | WTT301LFM | WTT301 | WTT301FM | |
| WTT303L | WTT303LFM | WTT303 | WTT303FM | .517 (13.1) |
| WTT306L | WTT306LFM | WTT306 | WTT306FM | .75 (19.1) |
| WTT307L | WTT307LFM | WTT307 | WTT307FM | .828 (21) |

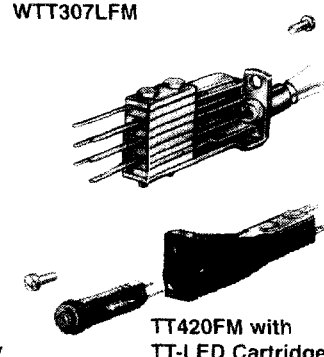
Special order only; contact Switchcraft for price and delivery.



Series TT300



WTT307LFM



TT-LAMP JACKS

Miniature lamp jacks can be substituted on TT jack panels where TT-jacks are used. Jacks use T-1 3/4 bi-pin incandescent lamps and jewel assemblies or TT-LED solid state lamps.

SPECIFICATIONS

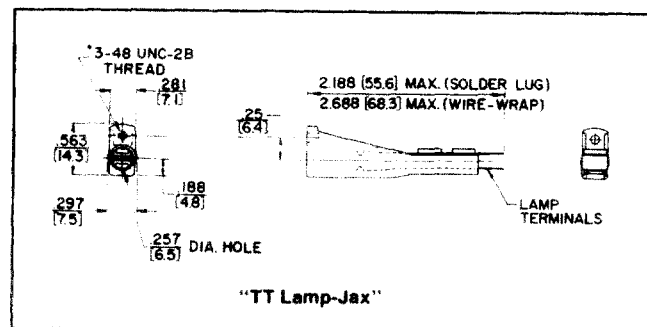
Housing: Gray molded plastic.

Contact Springs and Wire Wrapping Terminals: Copper alloy. Solder lugs are tin-dipped.

Mounting Screw: Steel, plated, #3-48 x .312 inch phillips head machine screw (front mount jacks only).

PART NUMBERS

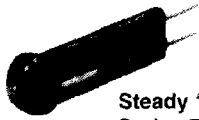
| Solder Lugs | Wire- Wrapping | Description |
|----------------|-------------------|---|
| TT420 | WTT420 | Rear mount lamp jack. Used on 1600, A1600, B1600, C1600 jack panels. |
| TT420FM | WTT420FM | Front mount lamp jack. Used on TT51, TT52, TT55 and TT56 jack panels. One #3-48 x .312 inch mounting screw P25425 is supplied with each jack. |



*For rear mount component, hole is 1.103 inch (27.6 mm) diameter

Note: Dimensional drawings show panels with steel frame jacks. Overall dimensions for steel or die-cast frame jacks are the same.

TT® LAMPS AND JEWEL ASSEMBLIES



Steady "On" Lamp
Series TT450



Blinking/Steady
"On" Lamp

SERIES TT-450 LAMPS

Red LED and series dropping resistor are molded into compact cartridge with bi-pin terminals for use with TT Lamp-Jax® lamp jacks. Colored bezels are molded in for color coding of functions; colors are black, red, green, white and yellow. On special order, blue or other colors are available.

Standard voltages are 6, 24 and 48 V (DC only). No tools are required for lamping/relamping. Simply slip TT-LED into lamp jack with (+) terminal up. If it doesn't light, remove it, rotate it 180°, and reinsert it into jack.

SPECIFICATIONS

Housing: Molded black plastic.

Bezel: Molded plastic in colors.

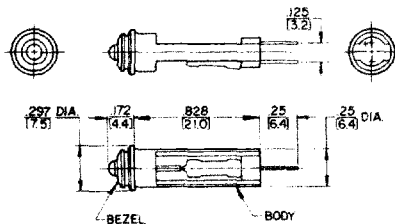
LED: Red illumination.

Pins: T-1 3/4 bi-pin configuration.

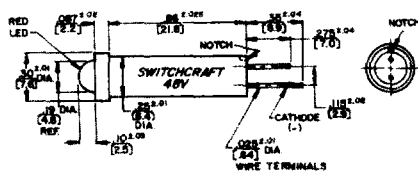
| Part Number | Voltage | Bezel Color | Part Number | Voltage | Bezel Color |
|-------------|---------|-------------|-------------|---------|-------------|
| TT45106 | 6 | Red | TT45406 | 6 | Blue |
| TT45124 | 24 | | TT45424 | 24 | |
| TT45148 | 48 | | TT45448 | 48 | |
| TT45206 | 6 | Black | TT45506 | 6 | White |
| TT45224 | 24 | | TT45524 | 24 | |
| TT45248 | 48 | | TT45548 | 48 | |
| TT45306 | 6 | Green | TT45806 | 6 | Yellow |
| TT45324 | 24 | | TT45824 | 24 | |
| TT45348 | 48 | | TT45848 | 48 | |

ORDERING

- Order by part number from table.
- For special order items, such as other LED colors, voltages, lamps with 25% reduced power consumption, etc., contact Switchcraft.



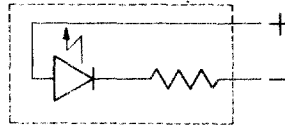
Series TT-450 TT-LED Lamps



Flashing/Steady "On" Lamps

TT-LED Lamps Installed

SCHEMATIC



FLASHING/STEADY ON LEDS

Yellow, green and red LEDs are 2-pin cartridge plug-ins which operate from a 48 VDC supply. When 48 V is applied, LED flashes for 30 seconds, then changes to steady "On" condition.

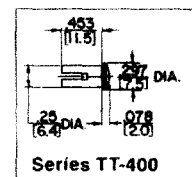
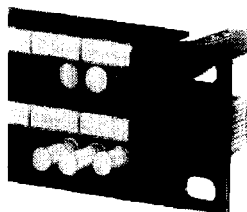
SPECIFICATIONS

Body: Thermoplastic, UL 94V-0 rated.

LED Colors: Yellow, green or red.

| Part Number | Description |
|-------------|----------------------------|
| 15J9068 | Red flashing/continuous |
| 15J9076 | Yellow flashing/continuous |
| 15J9077 | Green flashing/continuous |
| 15J9078 | Amber flashing/continuous |

TT-JEWEL ASSEMBLY



Panel with TT-Jewel Assemblies
and TT-Switches installed

Jewel assemblies use bi-pin lamp and act as lighted jewel and lamping/relamping tool. Simply slip bi-pin lamp in brass collar and insert lamp with pins in vertical plane. Lamp automatically seats properly. Jewel is molded plastic in colors; sleeve is brass.

| Part Number | Color | Part Number | Color |
|-------------|-------|--|--------|
| TT401 | Red | TT408 | Yellow |
| TT403 | Green | TT413 | Amber |
| TT404 | Blue | TT510 | Black* |
| TT405 | White | *Used as hole plug where no jack is installed. | |

LAMPS

| Part Number | Description |
|-------------|---|
| P2290 | 6.3 V, GE No. 7377. |
| P2315 | 6.3 V, GE No. 7381. Avg. life: 50K hrs. @ 200 mA. |
| P2316 | 28 V, GE No. 7387. Avg. life: 25K hrs. @ 40 mA. |
| P2456 | 24 V, GE No. 7001. |

DIMENSIONS ARE FOR REFERENCE ONLY $\frac{\text{Inch}}{(\text{mm})}$

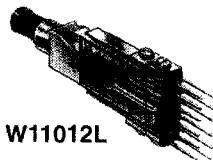
NOTE: Contact your Switchcraft Representative for price and delivery.

All products shown in this catalog are covered by Switchcraft's limited lifetime warranty

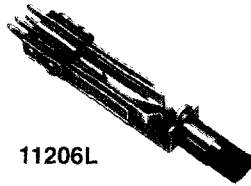
® Registered trademark of Switchcraft, Inc.

LONG FRAME SWITCHBOARD SWITCHES

SERIES 11000 and 11200



W11012L



11206L

Premium quality, long frame switches, designed especially for jack panel mounted switching. Standard actuations are push-lock/pull-release, 2-position turn button and 3 position turn button. Many contact forms available. Mounts in Switchcraft Jack Panels Series 1200, 1400, 2400, 2600, 2800, modular JP® jack panels, and other standard telephone jack panels. Part numbers in table indicate "A" frame. For same switch with "C" frame, add prefix "C" to part number. Many circuit forms not shown in tables are available on special order. Long leaf springs have no forms at point of flexing, which insures long life. Welded crossbar palladium contacts rated at 2A 200W maximum are standard. Fine silver (for higher currents) or gold alloy (dry circuit to 1A) contacts are available on special order. Contact Switchcraft.

SPECIFICATIONS

Frame, Screws and Twin Nut: Steel, plated.

Springs, Pressure Plate and Terminals: Copper alloy.
Solder lugs are tin-dipped.

Contacts: Welded crossbar palladium are standard.
Fine silver or gold alloy are available on special order.

Insulation: Rigid plastic. Extruded plastic tubing through stack.

Knob: Molded black plastic. Turn-key type faced with white arrow.

Bushing: Copper alloy, nickel-plated.

ORDERING

- Order by part number from table.
- For special order items, contact Switchcraft.

| Part Numbers | | Circuit |
|--------------|-----------|---------|
| Locking | Momentary | |

PUSHBUTTONS - SERIES 11000

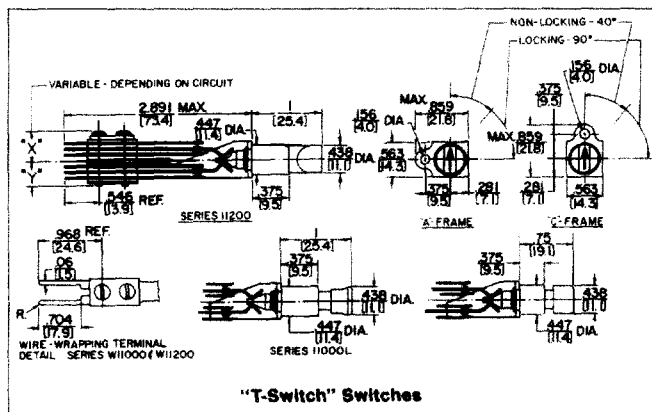
| | | |
|----------|---------|-----|
| ◊11001L | ◊11001 | 1-A |
| ◊11002L | ◊11002 | 1-B |
| ◊11003L | 11003 | 1-C |
| ◊W11003L | ◊W11003 | |
| ◊11003DL | ◊11003D | 1-D |
| ◊11004L | ◊11004 | 2-A |
| ◊11005L | ◊11005 | 2-B |
| 11006L | ◊11006 | 2-C |
| ◊W11006L | ◊W11006 | |
| ◊11006DL | ◊11006D | 2-D |
| ◊11008L | ◊11008 | 4-A |
| ◊11009L | ◊11009 | 3-C |
| ◊11012L | ◊11012 | 4-C |
| ◊W11012L | ◊W11012 | |

TURN BUTTONS - SERIES 11200

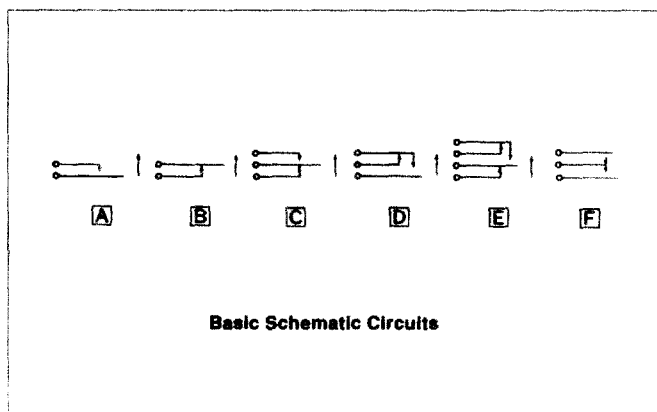
| | | |
|----------|---------|-----|
| ◊11201L | ◊11201 | 1-A |
| ◊11202L | ◊11202 | 1-B |
| 11203L | 11203 | 1-C |
| ◊W11203L | ◊W11203 | |
| ◊11203DL | ◊11203D | 1-D |
| ◊11204L | ◊11204 | 2-A |
| ◊11205L | ◊11205 | 2-B |
| 11206L | 11206 | 2-C |
| ◊W11206L | ◊W11206 | |
| ◊11206DL | ◊11206D | 2-D |
| ◊11208L | ◊11208 | 4-A |
| ◊11209L | ◊11209 | 3-C |
| ◊11212L | 11212 | 4-C |
| ◊W11212L | ◊W11212 | |

◊ Special order only; contact Switchcraft.

Mounting Screws: #6-32, P10725, can be ordered separately.
Contact Switchcraft. (Screws not supplied with switches.)



"T-Switch" Switches



Basic Schematic Circuits

DIMENSIONS ARE FOR REFERENCE ONLY $\frac{\text{inch}}{(\text{mm})}$

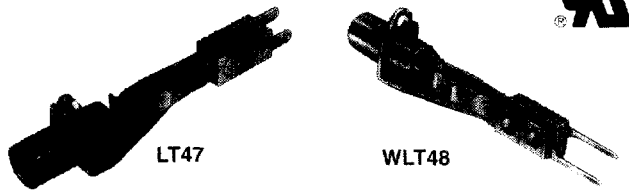
NOTE: Contact your Switchcraft Representative for price and delivery.

All products shown in this catalog are covered by Switchcraft's limited lifetime warranty

® Registered trademark of Switchcraft, Inc.

LONG FRAME LAMP JACKS AND LENS CAPS

SERIES LT-47 AND LT-48



Rugged Lamp-Jax[®] lamp jacks provide highly visible lighted indications on jack panels. Designed for use on Switchcraft Jack Panels Series 1200, 1400, 2400, 2600, 2800 and modular JP[®] panels, and other jack panels utilizing standard lamp jacks. Series LT50 Lens Caps are available where colored indications are desired.

LAMP-JAX[®], LT47 AND WLT47

Interchangeable with WEco #47A and #47B. Nylon lamp housing is molded to, and insulates from, frame. Long leaf springs without forms at point of flexing assure constant pressure on lamp contacts. Insulating stop member between springs acts as mechanical stop to prevent lamp insertion too far into frame. Solder lug LT47; Wire-wrapping WLT47.

LAMP-JAX®, LT48 AND WLT48

Similar to LT47 and WLT47, except uses high heat T2 lamps (ballast type, Sylvania 60XA or equivalent; not supplied). Metal sleeve and frame act as an efficient heatsink device to dissipate heat. Solder lug LT48; Wire-wrapping WLT48.

LAMP-JAX®, LT49

Designed for panel/chassis mount using standard T2 telephone slide base lamps or TEL-LED indicators (not supplied). Mounts in .438 inch (11.13mm) diameter hole in panels/chassis up to .031 inches (.79mm) to .25 inches (6.35mm) thick.

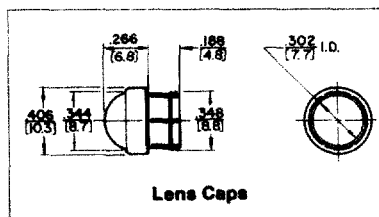
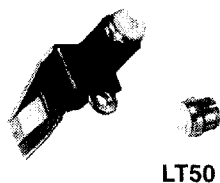
LAMPS

Lamp-Jax® use TEL-LED indicators or standard telephone T-2 slide base lamps (not supplied) and Switchcraft Lens Caps, Series LT70. WECo Lamp Caps numbers 2 or 72 may also be used. Long-life TEL-LED solid state lamps, Series LT70, are also available. See following page for specifications.

LENS CAPS, SERIES LT50

Series LT50 is standard telephone-type lamp caps used with LT47, WLT47, L-48 and WLT48 Lamp-Jax. Lens Caps are interchangeable with WEco Lens Caps numbers 2 and 72, and other equivalent types. Simply snap cap onto lamp jack pushing.

Lens Cap Installed



ORDERING

1. Order by part number from table.
2. "A" or "C" frames can be supplied. Part numbers in table denote "A" frame. For "C" frame, add prefix "C" to part number.
3. Other terminals can be supplied on special order: fanned (offset); right-angle AMP FASTON, or PC terminals. Contact Switchcraft.

SPECIFICATIONS

Frame, Rivets and Pressure Plates: Steel, plated.

Bushing (LT47, WLT47): Molded black thermoplastic.

Sleeve (LT48, WLT48): Steel, plated with iridescent iridite finish.

Sleeve Insulating Tubing (LT48, WLT48): Thermoplastic.

Springs: Copper alloy. Lugs are solder coated.

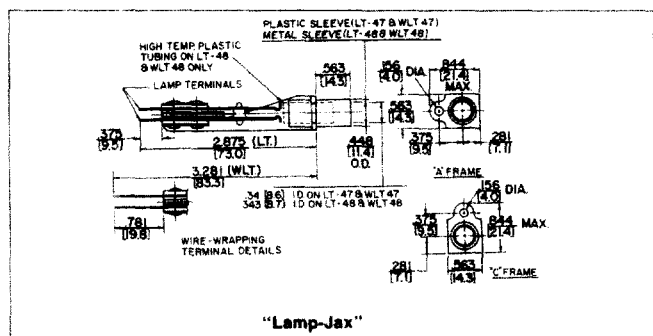
Insulation: Rigid plastic spacers with plastic tubing through stack.

Stop Member: Phenolic.

| Part Number | Description |
|-------------|---|
| LT47 | Lamp-Jax® lamp jack, solder lugs. |
| WLT47 | Lamp-Jax® lamp jack, wire-wrapping. |
| LT48 | Ballast Lamp-Jax® lamp jack, solder lugs. |
| ♦WLT48 | Ballast Lamp-Jax® lamp jack, wire-wrapping. |
| ♦LT49 | Lamp-Jax® lamp jack, solder lugs. |

◆ Special order only; contact Switchcraft

Mounting Screws: #6-32, P10725, can be ordered separately
Contact Switchcraft. (Screws not supplied with jacks.)



SPECIFICATIONS

Body: Nickel-plated copper alloy.

Lens Cap: Translucent plastic in colors.

ORDERING

Order by part number from table.

| Part Number | Lens Cap Color |
|-------------|----------------|
| LT5001 | Red |
| LT5003 | Green |
| LT5004 | Blue |
| LT5005 | White |
| LT5008 | Yellow |
| LT5012 | Clear |
| LT5013 | Amber |

Special order only; contact Switchcraft

DIMENSIONS ARE FOR REFERENCE ONLY Inch
(mm)

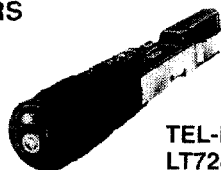
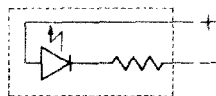
NOTE: Contact your Switchcraft Representative for price and delivery.

All products shown in this catalog are covered by Switchcraft's limited lifetime warranty

® Registered trademark of Switchcraft, Inc.

LED INDICATORS, DUMMY PLUGS AND HOLE PLUGS

TEL-LED INDICATORS



TEL-LED Indicator
LT7248

TEL-LED indicators provide bright red lighted indications from a solid-state lamp in telephone and other telecommunication applications. Ideal for retrofitting standard slide base T2 incandescent lamps. TEL-LED Indicators fit Switchcraft Lamp-Jax® and other standard telephone lamp jacks which use T2 slide base lamps. Solid-state construction, low power consumption, low heat generation, long-life and immunity to normal shock and vibration. Standard indicators operate on 48 V DC (polarity and voltage ratings such as 6 V DC and 24/28 V DC are available on special order). A built-in dropping resistor permits direct plug-in replacement of slide base T2 incandescent lamps to reduce future maintenance. TEL-LED indicators can be supplied in red, black, green, white or yellow bezel colors. This quick recognition feature is ideal for color coding groups of indicators in small and large jackfields.

SPECIFICATIONS

Housing and Bezel: Molded plastic in colors.

Springs: Copper alloy.

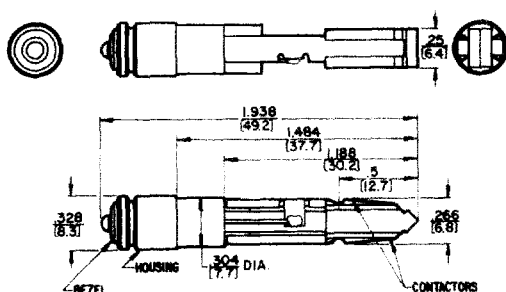
| Voltage Rating (DC) | Voltage Range | | Current (max.) (at rated voltage) | Luminous Intensity (milli-candellas) |
|---------------------|---------------|---------|-----------------------------------|--------------------------------------|
| | Minimum | Maximum | | |
| 24/28 | 20 | 32 | 9.5 | .63 |
| 48 | 46 | 80 | 8.5 | .58 |

ORDERING

Order by part number from table. For special order items, contact Switchcraft.

| Part Number | Rated Voltage | Bezel Color | Part Number | Rated Voltage | Bezel Color |
|-------------|---------------|-------------|-------------|---------------|-------------|
| LT7124 | 24/28 | Red | LT7348 | 48 | Green |
| LT7148 | 48 | Red | LT7524 | 24/28 | White |
| LT7224 | 24/28 | Black | LT7548 | 48 | White |
| LT7248 | 48 | Black | LT7824 | 24/28 | Yellow |
| LT7324 | 24/28 | Green | LT7848 | 48 | Yellow |

Special order only; contact Switchcraft.



DIMENSIONS ARE FOR REFERENCE ONLY $\frac{\text{Inch}}{(\text{mm})}$

NOTE: Contact your Switchcraft Representative for price and delivery.

DUMMY PLUGS



491



492



493

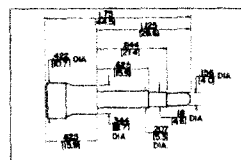
When inserted into a standard size telephone jack, the dummy plug actuates springs like a normal plug, except no signal is conducted through since the plug is made of non-conducting plastic. Dummy plugs can also be used to plug-up unused jacks to prevent accidental insertion of an incorrect plug.

SERIES 491: 3-conductor with .206 inch diameter finger. Mates with MT342B and MT344B MT-Jax®, Series M Hi-D Jax®, and other standard telephone jacks having .21 inch inside diameter sleeves.

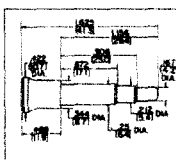
SERIES 492: 3-conductor with .25 inch diameter finger. Mates with 3-conductor MT-Jax® and Series M Hi-D Jax®, and other standard telephone jacks have .25 inch inside diameter sleeves.

SERIES 493: 2-conductor with .25 inch diameter finger. Mates with 2-conductor MT-Jax®, Series M Hi-D Jax®, and other standard telephone jacks having .25 inch inside diameter sleeves.

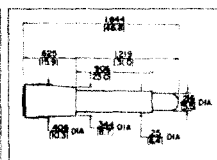
| Part Number | Description | | Interchangeable with | |
|-------------|-------------|-------|----------------------|-------|
| | Conductors | Color | WEco | Trimm |
| 49101 | 3 | Red | — | — |
| 49102 | 3 | Black | — | — |
| 49105 | 3 | White | — | — |
| 49201 | 3 | Red | 258F | 558D |
| 49202 | 3 | Black | 258C | 558C |
| 49205 | 3 | White | 258E | 558E |
| 49301 | 2 | Red | 165F | 556D |
| 49302 | 2 | Black | 165C | 556C |
| 49305 | 2 | White | 165E | — |



No. 491



No. 492



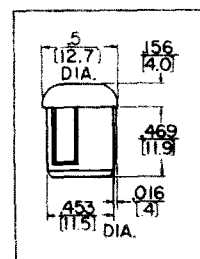
No. 493

PLASTIC HOLE PLUG

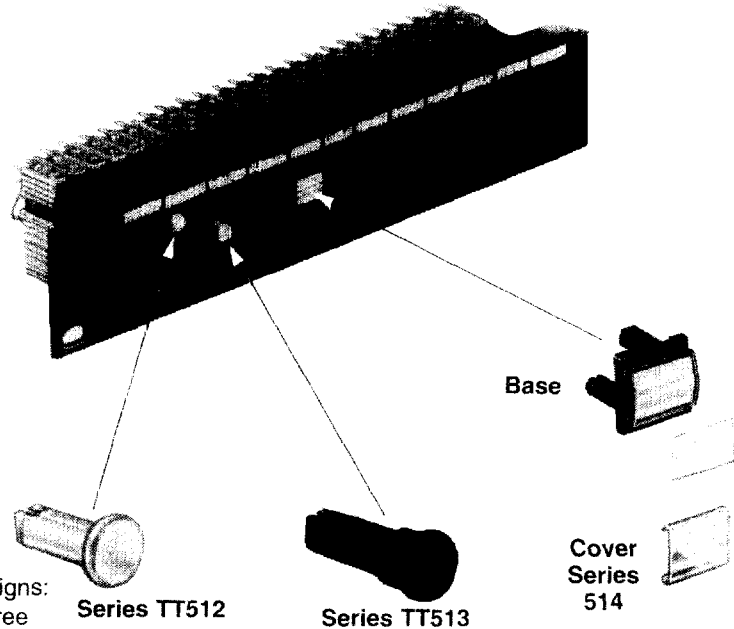


Hole Plug
P1801

Used to seal off unused holes in jack panels, Series 1200, 1400, 2400, 2600 and JP012000 through JP122000. Constructed of dimensionally stable molded black plastic.



TT® (BANTAM) CIRCUIT GUARD PLUGS



APPLICATION

Circuit guard plugs snap into TT-Jax® (bantam) jacks eliminating accidental or unauthorized insertion of a plug into a critical circuit. The circuit guards plugs do not actuate the jack springs. These plugs seal the jack bushing and provide an additional means of circuit identification.

Circuit guard plugs are available in three different designs: Series TT512, Series TT513 and Series TT514. All three designs are molded thermoplastic and are available in the following colors: red, black, green, blue, white or yellow.

SERIES TT512

TT512 circuit guard plugs cover an individual jack opening and insert to an virtually flush position with the front panel.

SERIES TT513

TT513 circuit guard plugs are similar to the Series TT512 except the button extends .219 inches from the front of the panel for easier removal.

SERIES TT514

TT514 circuit guard plugs cover both the IN and OUT jacks of two adjoining circuits while leaving the monitor jacks exposed for circuit testing. The four jack circuit guard plugs also include a matte finish white plastic marking strip and a clear extruded plastic window for additional designation.

SPECIFICATIONS

TT512 and TT513: Molded thermoplastic in colors.

TT514:

Base: Molded thermoplastic in colors.

Marking Strip: Matte finish white plastic.

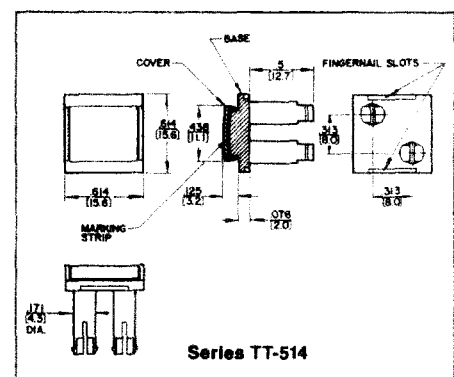
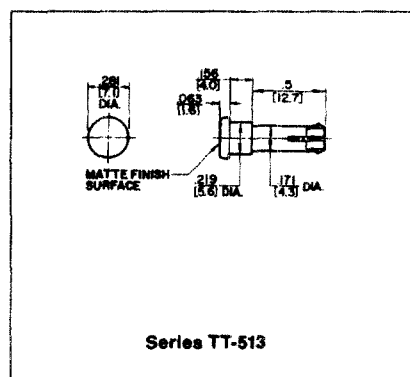
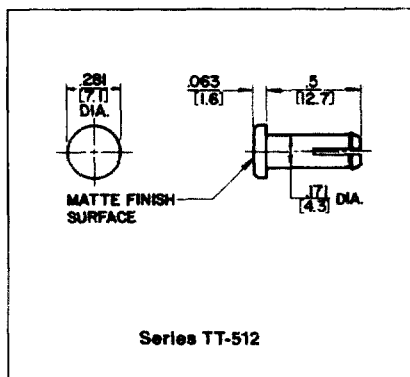
Cover: Clear extruded plastic

ORDERING

1. Order by part number from table.
2. Contact Switchcraft for any special order items.

| Part Number | Part Number | Part Number | Color |
|-------------|-------------|-------------|--------|
| TT5121 | TT5131 | TT5141* | Red |
| TT5122 | TT5132 | TT5142* | Black |
| TT5123 | TT5133 | TT5143* | Green |
| TT5124 | TT5134 | TT5144* | Blue |
| TT5125 | TT5135 | TT5145* | White |
| TT5128 | TT5138 | TT5148* | Yellow |

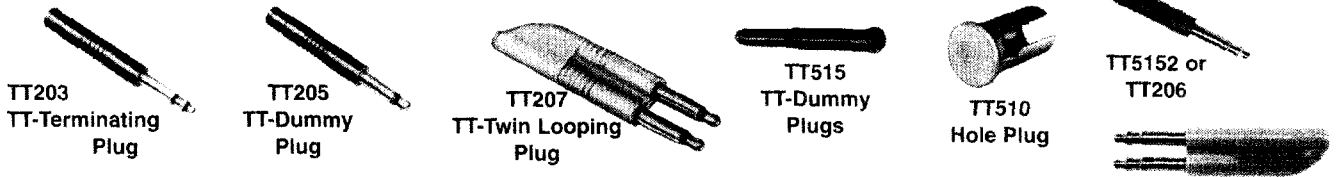
* Includes base, marking strip & cover



DIMENSIONS ARE FOR REFERENCE ONLY $\frac{\text{Inch}}{\text{mm}}$

NOTE: Contact your Switchcraft Representative for price and delivery.

MINIATURE, DUMMY PLUGS, HOLE PLUGS



Terminating, dummy and looping plugs are designed for use with mini-telephone® jacks. TT-Phone Plugs are also recommended for use on other miniature telephone jacks with same bushing inside diameter and compatible tip and/or ring spring configurations.

TT-TERMINATING PLUGS

TT-Phone Plug terminating plugs are used to terminate a circuit with a specific resistive load. A precision 1/2 watt, $\pm 1\%$ resistor is molded into the handle of each terminating plug. See "PLUG SCHEMATICS" for resistor wiring. Resistance value is marked on plug handle. Other resistance values are available on special order.

TT-DUMMY PLUGS

TT-Phone Plug dummy plugs are designed to be inserted into phone jacks to actuate shunt and isolated switching circuits.

TT-LOOPING PLUGS

TT-Phone Plug looping plugs are used to loop or patch adjacent jack circuits. See "PLUG SCHEMATICS" for wiring.

TT-HOLE PLUG

TT-Hole Plugs are used to close off unused openings in all Switchcraft TT-Jack Panels. Molded of black plastic with brass sleeve.

ORDERING

1. Order by part number from table.
2. Contact Switchcraft for any special order items.

SPECIFICATIONS

Series TT200

Tip Rod, Ring and Sleeve: Brass per QQ-B-626.

Handle: Molded PVC, ivory or black.

Series TT-510:

See page 215 for specifications.

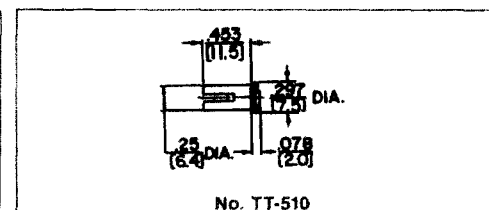
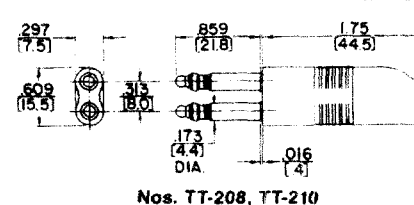
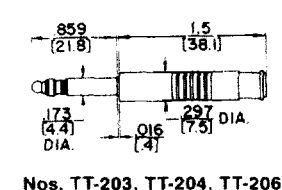
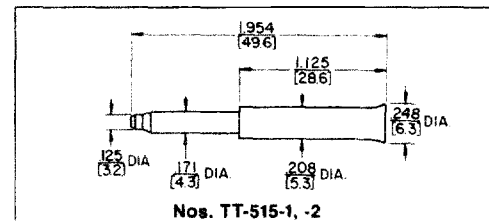
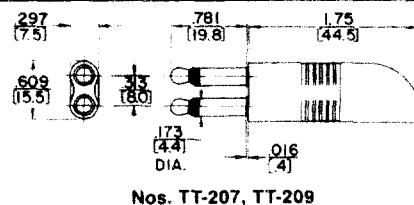
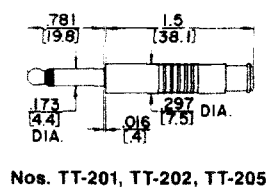
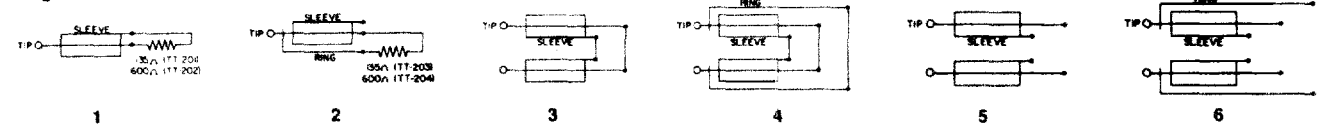
Series TT515:

Molded of dimensionally stable plastic in black, red or white.

| Part No. | Description | Schematic | Color |
|----------|--------------------------------------|-----------|-------|
| TT201 | 2-conductor terminating-135 Ω | 1 | Gray |
| TT202 | 2-conductor terminating-600 Ω | 1 | Gray |
| TT203 | 3-conductor terminating-135 Ω | 2 | Gray |
| TT204 | 3-conductor terminating-600 Ω | 2 | Gray |
| TT205 | 2-conductor dummy | 5 | Gray |
| TT206 | 3-conductor dummy | 6 | Gray |
| TT207 | 2-conductor twin looping | 3 | Gray |
| TT208 | 3-conductor twin looping | 4 | Gray |
| TT209 | 2-conductor twin dummy | 5 | Ivory |
| TT210 | 3-conductor twin dummy | 6 | Ivory |
| TT510 | Hole Plug | — | Black |
| TT5151 | 2- or 3-conductor dummy | — | Red |
| TT5152 | 2- or 3-conductor dummy | — | Black |
| TT5155 | 2- or 3-conductor dummy | — | White |

0 Special order only; contact Switchcraft for price and delivery.

Plug Schematics



DIMENSIONS ARE FOR REFERENCE ONLY $\frac{\text{inch}}{(\text{mm})}$

NOTE: Contact your Switchcraft Representative for price and delivery.

All products shown in this catalog are covered by Switchcraft's limited lifetime warranty

® Registered trademark of Switchcraft, Inc.

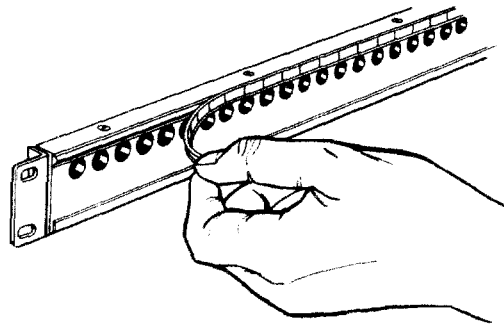
DESIGNATION STRIPS



Designation strips with protective covers are supplied with all tini-telephone® jack panels, jackfields and certain standard jack panels. Replacement kits and individual parts are also available. Legends can be marked in pencil, ink, or lettering transfers. Kwik-Change® is the name of all horizontal strips. See illustration.

Three types of designation strips are available as accessories:

1. Kwik-Change single height.
2. Kwik-Change double height.
3. X-Wide vertical.



KWIK-CHANGE® DESIGNATION STRIPS (SINGLE HEIGHT)

Two types of single height designation strips are available:

1. SERIES 1600, A1600, B1600, C1600, 1700, B1700, 1400300, 2600300, JP012000 through JP122000
 - Extruded aluminum mounting strip
 - Four mounting screws
 - Marking strips
 - Clear plastic strip covers

Mounting strips are fastened with four mounting screws provided. Marking strip slides into the clear plastic cover, and cover is snapped into place on the mounting strip. Legends can be marked in pencil, ink, lettering transfers, typewriter, etc.

SPECIFICATIONS

(Used on panels 1600, A1600, B1600, C1600, 1700, B1700)

Mounting Strip: Extruded aluminum black anodized

Cover: Clear extruded plastic.

Marking Strip: White matte finish plastic.

Screws: Copper alloy, plated.

(Used on panels 1400300, 1600300)

Mounting Strip: Aluminum alloy, extruded, black anodized.

Cover: Clear extruded plastic.

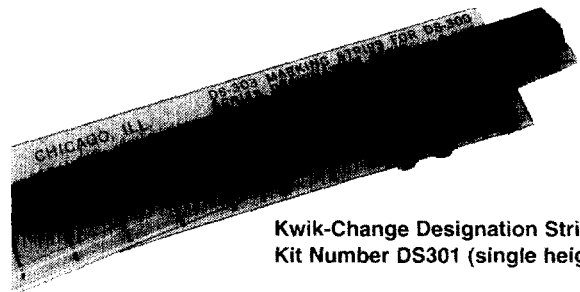
Marking Strip: White matte finish plastic.

Screws: Steel, plated.

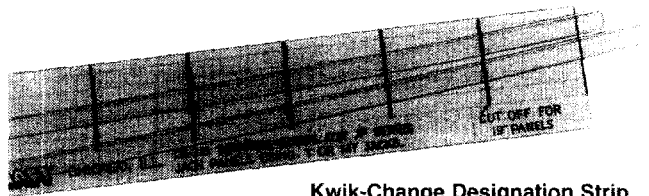
SERIES TT51 through TT62, TT-Connectorized (2-, 4- and 6-Wire), JP012000 through JP122000, TTPC and DSX panels. Mounting strips are extruded as part of the panel. Otherwise, use is the same as above.

ORDERING

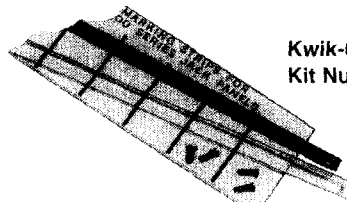
Order by part number from table.



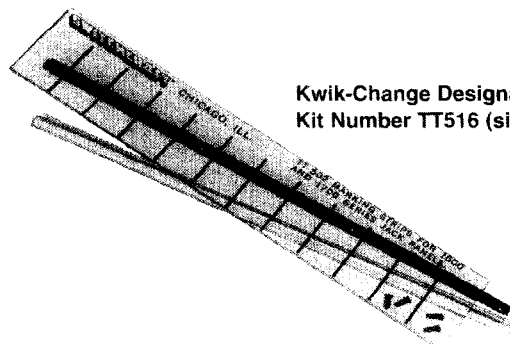
Kwik-Change Designation Strip
Kit Number DS301 (single height)



Kwik-Change Designation Strip
Kit Number DS318 (single height)



Kwik-Change Designation Strip
Kit Number TT501 (single height)



Kwik-Change Designation Strip
Kit Number TT516 (single height)

DIMENSIONS ARE FOR REFERENCE ONLY $\frac{\text{Inch}}{(\text{mm})}$

NOTE: Contact your Switchcraft Representative for price and delivery.

DESIGNATION STRIPS (continued)



SINGLE HEIGHT DESIGNATION STRIPS

| Part No. | Description | For Panels |
|--------------|---|---|
| TT501 | Kits (single height) includes: 1-mounting strip (8.375" long) 1-cover 1-marking strip sheet (5 strips per sheet) 4-mounting screws | 1600, 1700 (Alternate spacing) |
| TT502 | Marking Strip sheet (used with Kit TT501 & TT521) | — |
| TT503 | Cover (used with Kit TT501 and TT504) | — |
| TT504 | Kits (single height) includes: 1-mounting strip (8.375" long) 1-cover 1-marking strip sheet (5 strips per sheet) 4-mounting screws | A1600, C1600 (Continuous spacing) |
| TT519 | Kit (single height) includes: 2-covers (9.61" long) 1- marking strip sheet (5 strips per sheet) | TT52, TT54 TT56, TT58 TT60, TT62 (23" Panels) |
| TT520 | Marking strip sheet (used with Kit TT519) | — |
| TT521 | Kit (single height) includes: 2-covers (8.25" long) 1- marking strip sheet (5 strips per sheet) | TT51, TT53 TT55, TT57 TT59, TT61 Connectorized Jackfields (2-, 4- and 6 wire) |

| Part No. | Description | For Panels |
|--------------|---|------------------------------------|
| DS301 | Kit (single height) includes: 1-mounting strip (17" long) 1-cover 1-marking strip sheet (5 strips per sheet) 4-mounting screws | 1400301, 2600301 |
| DS302 | Cover (used with Kit DS301) | — |
| DS303 | Marking strip sheet (used with Kit DS301 and DS316) | — |
| DS306 | Marking strip sheet (used with Kit DS307 and DS308) | — |
| DS307 | Kit (single height) includes: 2-covers (16.5 inches long) 1-marking strip sheet (5 strips per sheet) | JP012000, JP032000, JP052000 |
| DS308 | Kit (single height) includes: 2-covers (19.5 inches long) 1-marking strip sheet (5 strips per sheet) | JP022000, JP042000, JP062000 |
| DS316 | Kit (single height) includes: 2-covers (16.25 inches long) 1- marking strip sheet (5 strips per sheet) | JP072000 JP092000, JP112000 |
| DS317 | Marking strip sheet (used with Kit DS318) | — |
| DS318 | Kit (single height) includes: 2-covers (20 inches long) 1- marking strip sheet (5 strips per sheet) | JP082000 JP102000, JP122000 |

KWIK-CHANGE® DESIGNATION STRIPS (DOUBLE HEIGHT)

Double height strips allow larger legends. Can be factory installed on Series 1600, B1600, 1700 and B1700 panels, or may be ordered separately for customer installation.

- Series 1600/B1600: Four strips can be mounted, two above each row of jack openings.
- Series 1700: Two strips can be mounted, two above or two below (special order) the double row of jack openings.
- Series B1700: Two strips can be mounted (side-by-side) above top row of jacks.

NOTE: When TT516 kits are mounted above top row of jacks on Series 1600, B1600 and B1700, strips will overhang top edge of panel by .156 inches. For most applications, the strips help seal the normal opening between adjacent panels. Series B1700 panel mounting screws may have to be loosened to facilitate removal of the panel above it in this type of installation.

SPECIFICATIONS

Mounting Strip: Black thermoplastic UL 94V-0.

Cover: Clear plastic.

Marking Strip: Matte finish white plastic.

Mounting Screws: Copper alloy, plated.

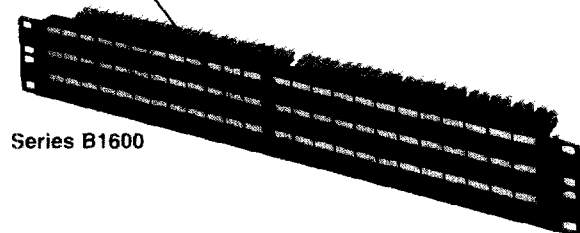
ORDERING

1. Order by part number from table.
2. To order double height strips installed on panels, contact Switchcraft.

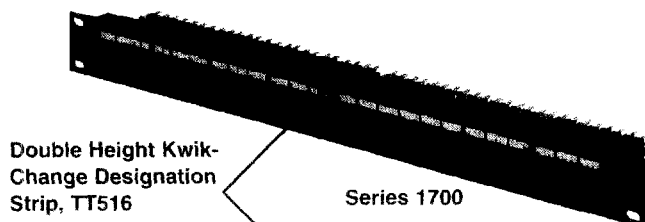
DIMENSIONS ARE FOR REFERENCE ONLY $\frac{\text{Inch}}{(\text{mm})}$

NOTE: Contact your Switchcraft Representative for price and delivery.

Single Height Kwik-Change® Designation Strip, TT501



Series B1600



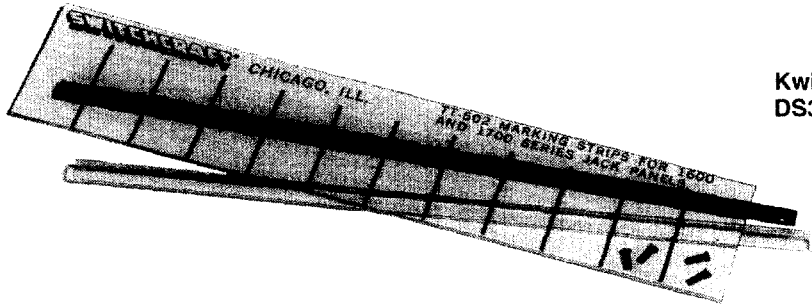
Double Height Kwik-Change Designation Strip, TT516

Series 1700



Series B1700

Kwik-Charge® DESIGNATION STRIPS (DOUBLE HEIGHT)



**Kwik-Charge® Designation Strip
DS311 (double height)**



DOUBLE HEIGHT DESIGNATION STRIPS

| Part No. | Description | For Panels |
|--------------|---|---------------------|
| DS311 | Kit (double height) includes: 1-mounting strip (17 inches long) 1-cover 1-marking strip sheet (3 strips per sheet) 4-mounting screws | 2600310, 1400315 |
| DS312 | Cover (used with Kit DS311) | — |
| DS313 | Marking strip sheet (used with Kit DS311) | — |

| Part No. | Description | For Panels |
|--------------|--|-----------------------------|
| TT516 | Kit (double height) includes: 1-mounting strip (8.375" long) 1-cover 1-marking strip sheet (3 strips per sheet) 4-mounting screws | 1600, B1600, 1700, B1700 |
| TT517 | Marking strip sheet (used with Kit TT516) | — |
| TT518 | Cover (used with Kit TT516) | — |

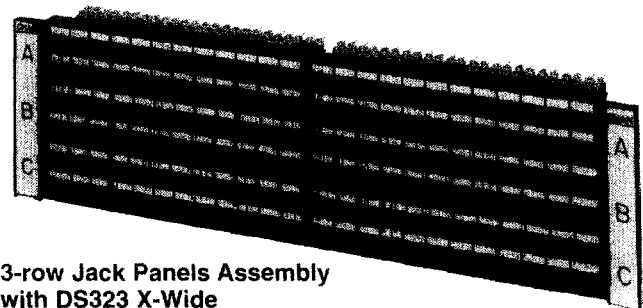
X-WIDE® VERTICAL DESIGNATION STRIPS

X-Wide designation strips mount on either side (or both) of standard 19- and 23- inch wide panels and do not interfere with horizontally mounted strips. Each kit contains two mounting brackets which easily fasten with mounting screws provided. Marking strips and clear plastic covers slide into place. Each kit fits onto both sides of a jack panel. X-Wide strips are used on the following panels:

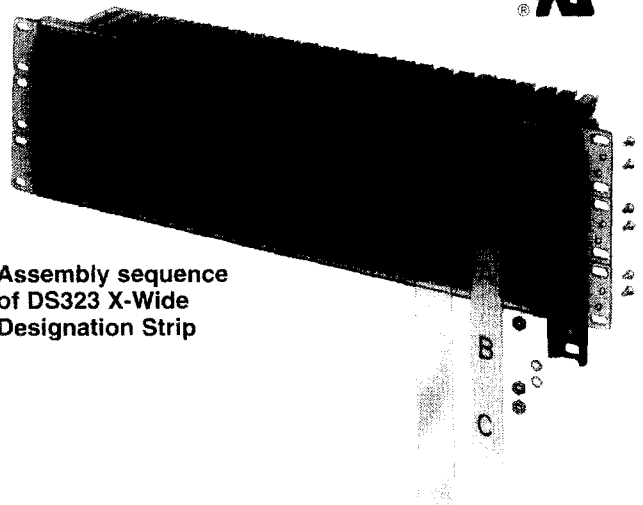
| UNDRILLED | PREDRILLED |
|---|---|
| 1600, A1600, 1700 B1700, TT51 through TT62, 2-, 4- & 6-Wire TT-Connectorized Jackfields, 2- & 4-Wire TTPC Connectorized Jackfields, 1200, 1400, 1400320, 2600, and 2600320. | D1600, D1700, BD1700, TTD51 through TTD62, 2- 4 & 6-Wire TT-Connectorized Jackfields, 2 & 4-Wire TTPC Connectorized Jackfields. |

SPECIFYING NOTES: Each kit fits both sides of a jack panel (Standard height 1.75 inches. Also available in 3.5 inch and 5.25 inch heights.

Prefix letter "D" indicates panels have been predrilled countersunk holes to facilitate mounting X-Wide strips. Series 1200, 1400, & 2600 can be predrilled on special order.



**3-row Jack Panels Assembly
with DS323 X-Wide
Designation Strip installed**



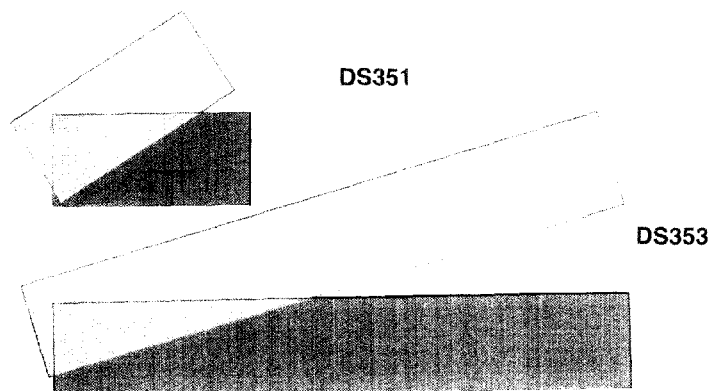
**Assembly sequence
of DS323 X-Wide
Designation Strip**

DIMENSIONS ARE FOR REFERENCE ONLY

Inch
(mm)

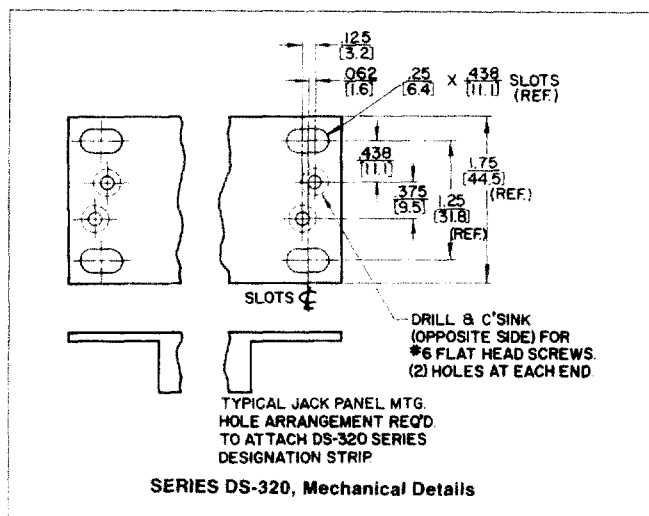
NOTE: Contact your Switchcraft Representative for price and delivery.

X-WIDE® VERTICAL DESIGNATION STRIPS



X-WIDE VERTICAL DESIGNATION STRIPS

| Part No. | Description | For Panels |
|--------------|---|--|
| DS321 | Kit (.75 x 1.75 inches) includes: 2-mounting brackets 2-marking strips 2-covers 4-mounting screws, nuts and lockwashers | 1600, A1600 1700, B1700 TT51 thru TT54, TT59 thru TT62, 2- & 4-Wire TTConnectorized Jackfields, 2-, 4- & 6-Wire TTPC Connectorized Jackfields |
| DS322 | Kit (.75 x 3.5 inches) includes: 2-mounting brackets 2-marking strips 2-covers 8-mounting screws, nuts and lockwashers | Same as DS321 (Mounted in pairs) |
| DS323 | Kit (.75 x 5.25 inches) includes: 2-mounting brackets 2-marking strips 2-covers 12-mounting screws, nuts and lockwashers | 6-Wire TT- Connectorized and panels for DS321 |
| DS350 | Kit (.75 x 2.265 inches) includes: 2-mounting brackets 2-marking strips 2-covers 4-mounting screws, nuts and lockwashers | B1600, C1600 |
| DS351 | Kit (.75 x 1.75 inches) includes: 1-marking strip 1-cover (Used on all 1.75 inch height connectorized jackfields except next to hinge) | 2-, 4- & 6-Wire Connectorized Jackfields, TTPC Connectorized Jackfields |
| DS352 | Kit same as DS351 except narrow width. To be used next to hinge. | Same as DS351 |
| DS353 | Kit (.75 x 5.25 inches) includes: 1-marking strip 1-cover | 6-Wire TT- Connectorized Jackfields |



ORDERING

1. Order by part number from table.
2. To order X-Wide® strips installed on panels, contact Switchcraft.

DIMENSIONS ARE FOR REFERENCE ONLY

Inch
(mm)

NOTE: Contact your Switchcraft Representative for price and delivery.

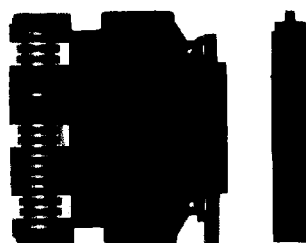
All products shown in this catalog are covered by Switchcraft's limited lifetime warranty

® Registered trademark of Switchcraft, Inc.

BLANK MODULES

APPLICATION

Blank modules can be used to cover open positions in a partially filled SNAP® chassis where jacks have not yet been installed. Each blank module covers an individual jack position protecting the circuit cards inside the chassis and preventing any damage to the internal circuitry of the chassis. Blank modules slide into the open position and then are easily removed when jacks need to be deployed.



ORDERING INFORMATION

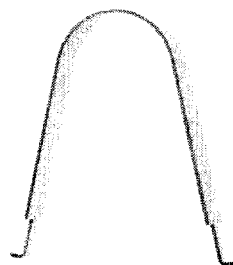
| PART NUMBER* | DESCRIPTION |
|----------------|-----------------------------|
| DSX-SNAP-BLANK | SNAP® blank module - 4 pack |

* Standard color is black. Call Switchcraft for color options.

JACK REMOVAL TOOL

APPLICATION

SNAP® jack removal tool is used to pull jack modules out of the card slots in the SNAP® chassis.



ORDERING INFORMATION

| PART NUMBER | DESCRIPTION |
|-------------|--------------------------------|
| 480C013BE | SNAP® jack module removal tool |

EXTENDER BRACKETS

APPLICATION

Extender brackets allow panels designed to mount in a 19" rack to mount in a 23" rack. Extender brackets attach to each side of the panel to adapt the width to the mounting requirements of the 23" rack. Each extender bracket kit includes 2 brackets and the required rack mounting hardware.

ORDERING INFORMATION

| PART NUMBER | DESCRIPTION |
|-------------|---|
| DSX-EB2E | 2" with mounting holes on 1.25" center for EIA rack |
| DSX-EB2W | 2" with mounting holes on 1" center for WECO rack |
| DSX-EB525EW | 5.25" with mounting holes for 1.75" and 2" EIA and WECO racks |

DIMENSIONS ARE FOR REFERENCE ONLY $\frac{\text{Inch}}{(\text{mm})}$

NOTE: Contact your Switchcraft Representative for price and delivery.

DESIGNATION WINDOWS AND LABELS**APPLICATIONS**

Replacement cards and windows and stick-on labels are available for each DSX panel so that panels may be relabeled or reused as needed within the network.

ORDERING INFORMATION

| DSX PANEL | REPLACEMENT KIT PART NUMBER |
|------------------|------------------------------------|
| DSX-S-28-RR | DSX-DK-S-28-RR |
| DSX-S-56-RR-11 | DSX-DK-S-56-RR-11 |
| DSX-S-56-RR-12 | DSX-DK-S-56-RR-12 |
| DSX-S-56-RR-21 | DSX-DK-S-56-RR-21 |
| DSX-S-56-RR-22 | DSX-DK-S-56-RR-22 |
| DSX-S-64-RR-21 | DSX-DK-S-64-RR-21 |
| DSX-S-64-RR-23 | DSX-DK-S-64-RR-23 |
| DSX-S-28-FR | DSX-DK-S-28-FR |
| DSX-S-56-FR-11 | DSX-DK-S-56-FR-11 |
| DSX-S-56-FR-12 | DSX-DK-S-56-FR-12 |
| DSX-S-56-FR-21 | DSX-DK-S-56-FR-21 |
| DSX-S-56-FR-22 | DSX-DK-S-56-FR-22 |
| DSX-S-64-FR-21 | DSX-DK-S-64-FR-21 |
| DSX-S-64-FR-23 | DSX-DK-S-64-FR-23 |
| DSX-W-56-RR-21 | DSX-DK-W-56-RR-21 |
| DSX-W-56-RR-22 | DSX-DK-W-56-RR-22 |
| DSX-W-84-RR-21 | DSX-DK-W-84-RR-21 |
| DSX-W-84-RR-24 | DSX-DK-W-84-RR-24 |
| DSX-W-08-FF-UW | DSX-DK-W-08-FF |
| DSX-W-12-FF-UW | DSX-DK-W-12-FF |
| DSX-W-12-FR-11 | DSX-DK-W-12-FR-11 |
| DSX-W-50-FR-11 | DSX-DK-W-50-FR-11 |
| DSX-W-56-FF-21 | DSX-DK-W-56-FF-21 |
| DSX-W-56-FF-22 | DSX-DK-W-56-FF-22 |
| DSX-W-56-FR-11 | DSX-DK-W-56-FR-11 |
| DSX-W-56-FR-12 | DSX-DK-W-56-FR-12 |
| DSX-W-56-FR-21 | DSX-DK-W-56-FR-21 |
| DSX-W-56-FR-22 | DSX-DK-W-56-FR-22 |

DIMENSIONS ARE FOR REFERENCE ONLY $\frac{\text{Inch}}{(\text{mm})}$

NOTE: Contact your Switchcraft Representative for price and delivery.

All products shown in this catalog are covered by Switchcraft's limited lifetime warranty

® Registered trademark of Switchcraft, Inc.

DSX-1 PART NUMBERING SYSTEM

DSX - - - - (-)*

CONFIGURATION

S - SNAP®

W - Wired

NUMBER OF CIRCUITS

(00, 08, 12, 28, 50, 56, 64, 84)

CROSS-CONNECTS

F - Front

R - Rear

EQUIPMENT TERMINATIONS

F - Front

R - Rear

MOUNTING

1 - 19"

2 - 23"

3 - Both 19" and 23"

CIRCUIT NUMBERING

1 - 1-N

2 - 1-28 A and B

3 - 1-32 A and B

4 - 1-28 A,B and C

* OPTIONS (use only if required)

UW - White Panel Color

LY - Yellow LEDs

LA - Amber LEDs

LG - Green LEDs

R2 - Repeater Jack

10 - 1" D Cable Rings

20 - 2" D Cable Rings

30 - 3" D Cable Rings

DIMENSIONS ARE FOR REFERENCE ONLY $\frac{\text{inch}}{(\text{mm})}$

NOTE: Contact your Switchcraft Representative for price and delivery.

CROSS REFERENCE TABLE

SNAP® PANELS - FRONT CROSS-CONNECT

| DESCRIPTION | SWITCHCRAFT® | ADC |
|-------------|----------------|----------------------|
| 64 Circuit | DSX-S-64-FR-2X | Similar to DSX-1C/28 |

SNAP® PANELS - REAR CROSS-CONNECT

| DESCRIPTION | SWITCHCRAFT® | ADC |
|-------------|----------------|------------------------|
| 64 Circuit | DSX-S-64-RR-22 | Similar to DSX-BEST-64 |

HARDWIRED PANELS - FRONT CROSS-CONNECT

| DESCRIPTION | SWITCHCRAFT® | ADC |
|-------------|----------------|-----------------------------|
| 8 Circuit | DSX-W-08-FF-UW | Equivalent to MINI DSX-1/WM |
| 50 Circuit | DSX-W-50-FR-22 | Equivalent to DSX-1C/1BR |
| 56 Circuit | DSX-W-56-FF-21 | Equivalent to DSX-CEV-56 |

HARDWIRED PANELS - FRONT CROSS-CONNECT

| DESCRIPTION | SWITCHCRAFT® | ADC |
|-------------|-------------------|-------------------------------|
| 56 Circuit | DSX-W-56-RR-21 | Equivalent to DSX-BEST-56 |
| 56 Circuit | DSX-S-56-RR-22 | Equivalent to DSX-BEST-56C |
| 84 Circuit | DSX-W-84-RR-21 | Equivalent to D1M-1B0006 |
| 84 Circuit | DSX-W-84-RR-24 | Equivalent to D1M-1B0007 |
| 84 Circuit | DSX-W-84-RR-21-UW | Equivalent to D1M-1B0005 |
| 84 Circuit | DSX-W-84-RR-24-UW | Equivalent to D1M-1B0004 |
| 84 Circuit | DSX-W-84-RR-21 | Equivalent to DSX-BEST-84B |
| 84 Circuit | DSX-W-84-RR-24 | Equivalent to DSX-BEST-84/28B |
| 84 Circuit | DSX-W-84-RR-21-UW | Equivalent to DSX-BEST-84P |
| 84 Circuit | DSX-W-84-RR-24-UW | Equivalent to DSX-BEST-84/28P |