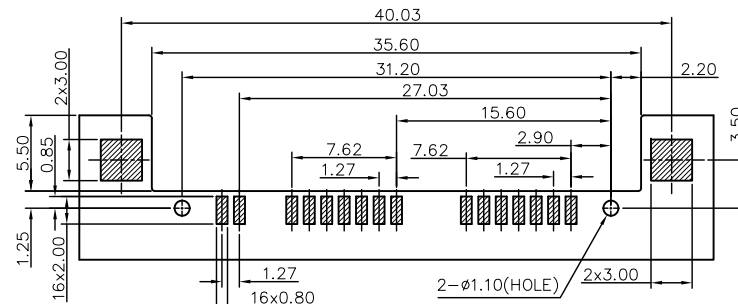
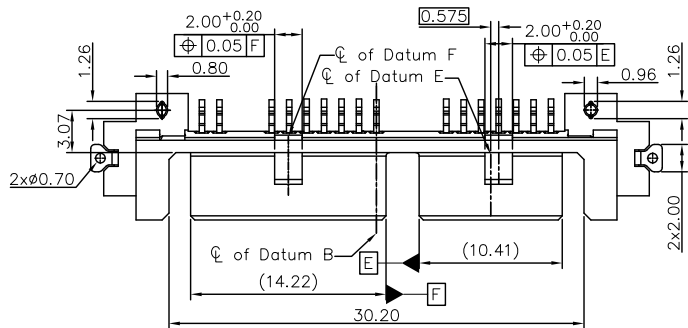


This document is the property of Amphenol Corporation and is delivered on the express condition that it is not to be disclosed, reproduced or used, in whole or in part, for manufacture or sale by anyone other than Amphenol Corporation without the prior consent, & that no right is granted to disclose or to use any information in this document.

REVISIONS				
SYM	ECN	DESCRIPTION	DATE	APPROVED
1	HK6022	FIRST RELEASE	12/24/09	IP



RECOMMEND PCB LAYOUT  
General Tolerance:±0.05

NOTES :

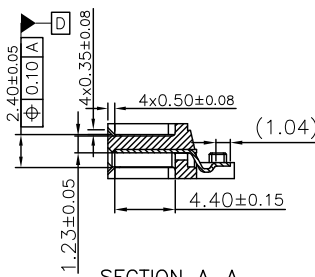
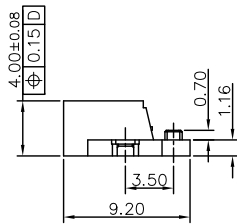
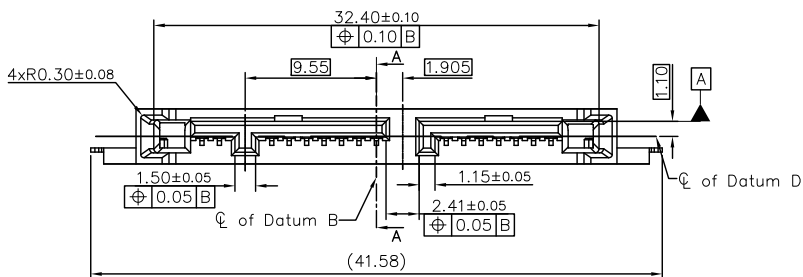
- Material:  
Plastic: High thermoplastic,UL 94V-0,Black  
Contact: copper alloy  
Solder tab: copper alloy
- Finished:  
All pins: 1.27~2.54µm Nickel under plate over all  
Contact mating area:Refer to the P/N system  
Tail area: 1.27µm MIN Matte TIN plated  
Solder tab: 1.27µm Nickel under plated over all  
2.54~5.08µm Matte tin plating solder area.
- Electrical performance:  
3.1 Current rating: 1.5A MIN  
3.2 Dielectric strength: 500V for 1 minute  
3.3 Insulation resistance: 1000MΩ  
3.4 Operation temperature: -40°C to +105°C
- Order p/n system:

MSATA-001-0003-X-X

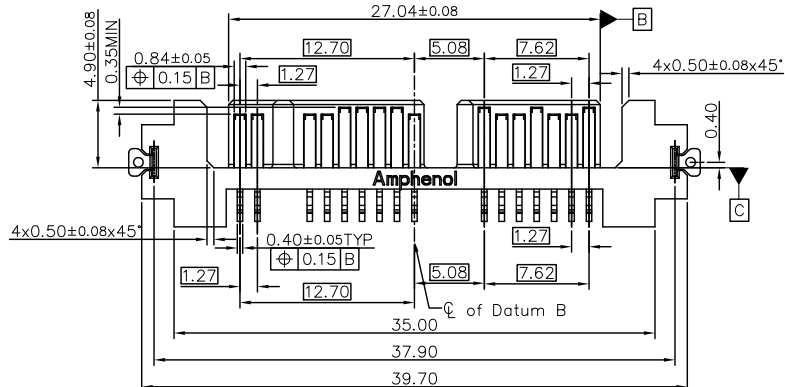
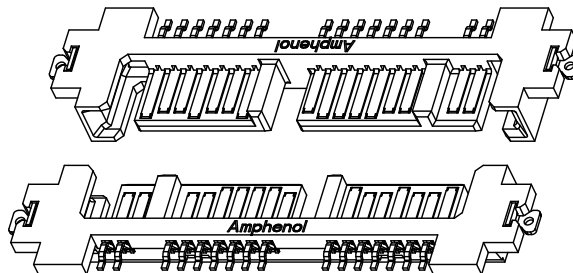
- Packing method  Contact mating area plated
- Packing with tray 1 0.76 µm MIN gold
  - Packing with tape and reel 2 0.38 µm MIN gold
  - Gold flash 3 Gold flash

- Dimensioning shall be interpreted per ASME Y14.5M 1994
- Material should be fulfilled Amphenol SPEC.# S-SN-002, for halogen free products,also need to meet S-SN-004

CUSTOMER DRAWING



SECTION A-A



UNLESS OTHERWISE SPECIFIED TOLERANCES		APPROVAL		DATE	Amphenol Amphenol East Asia Limited
U.S.	METRIC	DRAWN	Fuan Jiong 12/24/09		
0.0	+/-	0.50	CHECKED	Tom Tang	TITLE CUSTOMER DRAWING FOR MICRO SATA REVERSE SMT PLUG
0.00	+/-	0.25	CHECKED		
0.000	+/-	0.20			SIZE DRAWING NO. A3 C MSATA-001-0003-X-X
FRACTIONS	+/-	0.20			
ANGLES	+/-	5°	DRAWING FILE : VDRWHQ\MSATA\CMR\TA01000003-1		REV. 1
FOR MATERIALS AND FINISHES SEE NOTES		REMOVE SHARP EDGES		ANGLE OF PROJECTION	SCALE N/A
DIMENSIONS		U.S. INCHES			SHEET 1 OF 1
(METRIC)		(MM)			