

# FAST / TTL Buffered 5-Tap Delay Modules DIP & SMD

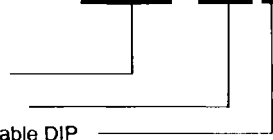
## Part Number Description

Buffered 5 Tap Delay  
Molded Package Series:  
FAMDM, FAIDM, AMDM, AIDM  
Total Delay in nanoseconds (ns)

Lead Style: Blank = Auto-Insertable DIP  
G = "Gull Wing" Surface Mount  
J = "J" Bend Surface Mount

Examples: FAMDM-100 = 100ns (20ns per tap) 74F Buffered, DIP  
AMDM-25G = 25ns (5ns per tap) TTL, G-SMD

XXXXX - XXX X



**GENERAL:** For Operating Specifications and Test Conditions, see Tables I and VII on page 7 of this catalog. Delays specified for the Leading Edge.

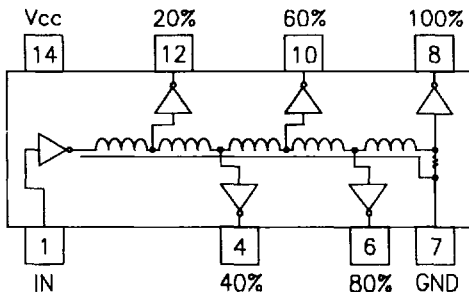
Tap Delays referenced to Input .....  $\pm 5\%$  or  $\pm 2$  ns  
Minimum Input Pulse Width ..... 40% of total delay  
Temperature Coefficient of Delay ..... 500ppm/ $^{\circ}$ C typical  
Supply Current,  $I_{CC}$  :  
AIDM, AMDM ..... 39 mA typ., 65 mA max.  
FAIDM, FAMDM ..... 25 mA typ., 48 mA max.

## Electrical Specifications at 25 $^{\circ}$ C

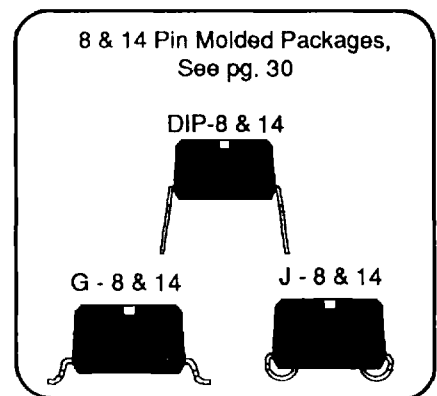
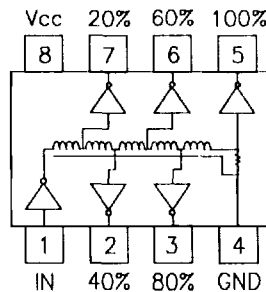
FAST Buffered 5 Tap Modules		Tap Delay Tolerances +/- 5% or 2ns (+/- 1ns <15ns)					Tap-to-Tap (ns)
8 Pin DIP P/N	14 Pin DIP P/N	Tap 1	Tap 2	Tap 3	Tap 4	Total - Tap 5	
** FAMDM-7	** FAIDM-7	3.0	4.0	5.0	6.0	7 $\pm$ 1.0	** 1 $\pm$ 0.5
** FAMDM-9	** FAIDM-9	3.0	4.5	6.0	7.5	9 $\pm$ 1.0	** 1.5 $\pm$ 0.5
** FAMDM-11	** FAIDM-11	3.0	5.0	7.0	9.0	11 $\pm$ 1.0	** 2 $\pm$ 0.7
** FAMDM-13	** FAIDM-13	3.0	5.5	8.0	10.5	13 $\pm$ 1.5	** 2.5 $\pm$ 1.0
FAMDM-15	FAIDM-15	3.0	6.0	9.0	12.0	15 $\pm$ 1.5	3 $\pm$ 1.0
FAMDM-20	FAIDM-20	4.0	8.0	12.0	16.0	20 $\pm$ 2.0	4 $\pm$ 1.5
FAMDM-25	FAIDM-25	5.0	10.0	15.0	20.0	25 $\pm$ 2.0	5 $\pm$ 2.0
FAMDM-30	FAIDM-30	6.0	12.0	18.0	24.0	30 $\pm$ 2.0	6 $\pm$ 2.0
FAMDM-35	FAIDM-35	7.0	14.0	21.0	28.0	35 $\pm$ 2.0	7 $\pm$ 2.0
FAMDM-40	FAIDM-40	8.0	16.0	24.0	32.0	40 $\pm$ 2.0	8 $\pm$ 2.0
FAMDM-45	FAIDM-45	9.0	18.0	27.0	36.0	45 $\pm$ 2.25	9 $\pm$ 2.0
FAMDM-50	FAIDM-50	10.0	20.0	30.0	40.0	50 $\pm$ 2.5	10 $\pm$ 2.0
FAMDM-60	FAIDM-60	12.0	24.0	36.0	48.0	60 $\pm$ 3.0	12 $\pm$ 2.0
FAMDM-75	FAIDM-75	15.0	30.0	45.0	60.0	75 $\pm$ 3.75	15 $\pm$ 2.5
FAMDM-80	FAIDM-80	16.0	32.0	48.0	64.0	80 $\pm$ 4.0	16 $\pm$ 2.5
FAMDM-100	FAIDM-100	20.0	40.0	60.0	80.0	100 $\pm$ 5.0	20 $\pm$ 3.0
FAMDM-125	FAIDM-125	25.0	50.0	75.0	100.0	125 $\pm$ 6.25	25 $\pm$ 3.0
FAMDM-150	FAIDM-150	30.0	60.0	90.0	120.0	150 $\pm$ 7.5	30 $\pm$ 3.0
FAMDM-175	FAIDM-175	35.0	70.0	105.0	140.0	175 $\pm$ 8.75	35 $\pm$ 3.5
FAMDM-200	FAIDM-200	40.0	80.0	120.0	160.0	200 $\pm$ 10.0	40 $\pm$ 4.0
FAMDM-250	FAIDM-250	50.0	100.0	150.0	200.0	250 $\pm$ 12.5	50 $\pm$ 5.0
FAMDM-300	FAIDM-300	60.0	120.0	180.0	240.0	300 $\pm$ 15.0	60 $\pm$ 6.0
FAMDM-350	FAIDM-350	70.0	140.0	210.0	280.0	350 $\pm$ 17.5	70 $\pm$ 7.0
FAMDM-400	FAIDM-400	80.0	160.0	240.0	320.0	400 $\pm$ 20.0	80 $\pm$ 8.0
FAMDM-500	FAIDM-500	100.0	200.0	300.0	400.0	500 $\pm$ 25.0	100 $\pm$ 10.0

\*\* These part numbers do not have 5 equal taps. Specified Tap-to-Tap Delays are referenced to Tap 1.

FAIDM - 14 Pin Schematic



FAMDM - 8 Pin Schematic



For other values & Custom Designs, contact factory.

Specifications subject to change without notice.

FAMDM 6/95