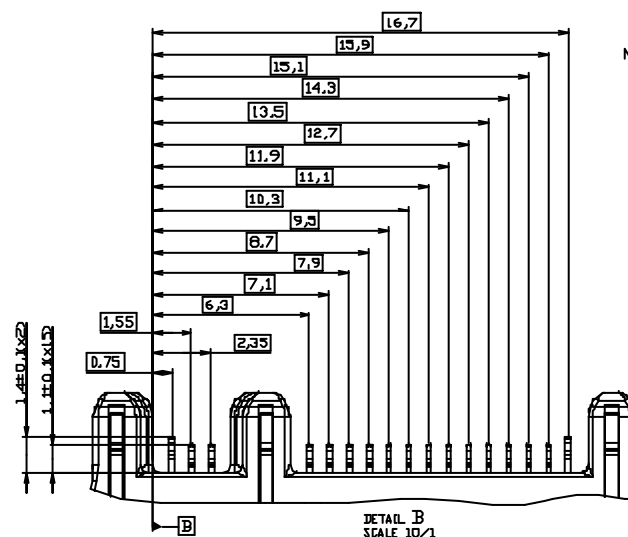
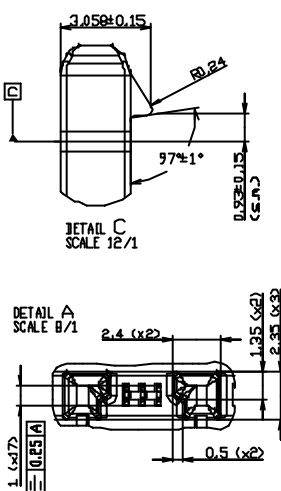
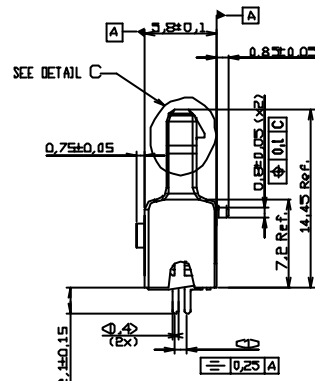


ECHELLE 5/1

ECHELLE 5/2

ECHELLE 5/3



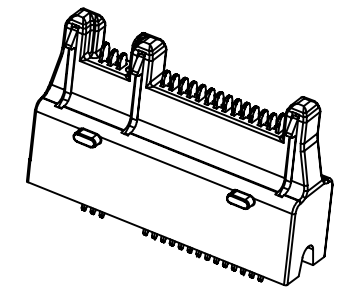
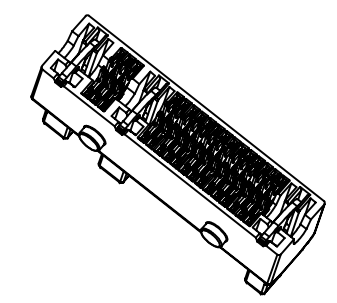
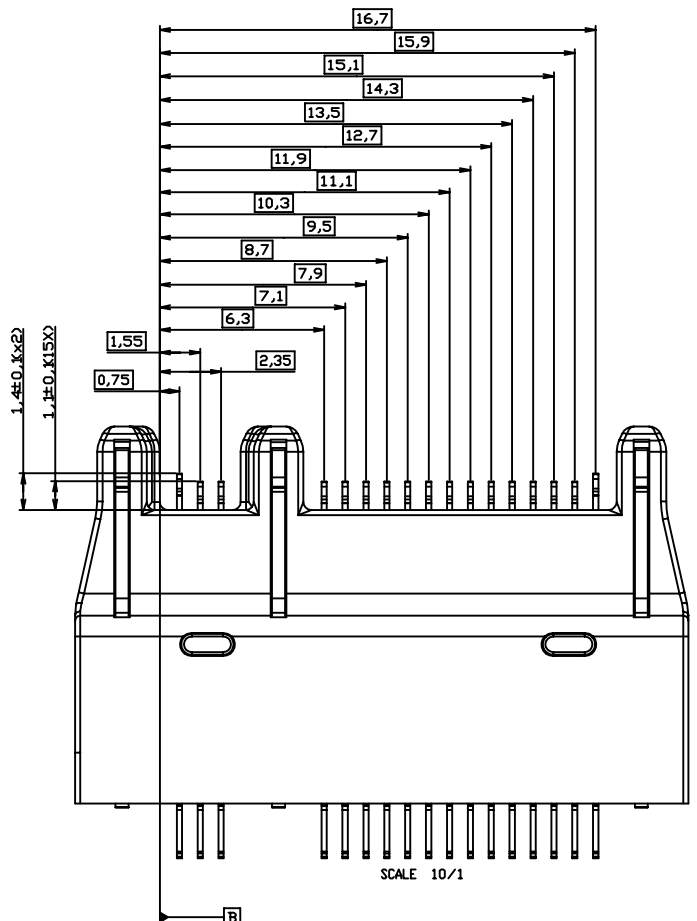
- | Item description | Material colour/plating |
|-------------------|---|
| Housing | -AL/ANALF PA 46, color black
-OD/ODLFL LCP, color black
-OD3/OD3FL PBT, color black |
| Contacts material | Std 94 |
| Contacts plating | Under layer Nickel
Contact area
20um min PGM with 18um min gold
Solder ball:
The lead for -OD/OD/OD3 is pure tin for
-ODLF/ODLF/ODLF |
| Latch material | Stainless steel |



PDM: Rev:D

all rights strictly reserved. Reproduction or use in third parties is strictly prohibited.
Tous droits strictement réservés. Réimpression ou utilisation par tiers est formellement interdite.
All rights strictly reserved. Reproduction or use in third parties is strictly prohibited.
Tous droits strictement réservés. Réimpression ou utilisation par tiers est formellement interdite.



© FCI Inc.



nat'l. code				tolerances unless otherwise specified				CUSTOMER COPY		 ELECTRONICS www.fciconnect.com				
ltr	ecn no	dr	date	linear	---					title				
C					---					BLUETOOTH ASSEMBLY				
					---					product family Mobile I/O				
		dr	MAGGIE WU	072203	angles	mm				code				
		engr	LEIF SHEN	072203		scale				213				
		chr	PAUL WANG	072203		10:1				sheet				
		appd	JENN TSAO	072203										
sheet	revision													
index	sheet													