

90° HYBRIDS - 5:1 TO 125:1 BANDWIDTH

Bandwidth	Frequency Range (MHz)	Insertion Loss (dB) max.	Isolation (dB) min.	Amplitude Balance (dB) max.	Phase Balance (Deg) max.	VSWR max.	P/N
5:1	2-10	0.5	25	0.4	2.0	1.40:1	QE-01-*
6:1	5-30	0.6	20	0.5	3.0	1.40:1	QE-02-*
5:1	10-50	0.6	20	0.5	3.0	1.40:1	QE-03-*
5:1	20-100	0.6	20	0.5	3.0	1.40:1	QE-04-*
5:1	30-150	0.6	20	0.5	3.0	1.40:1	QE-05-*
5:1	40-200	0.6	20	0.5	3.0	1.40:1	QE-06-*
5:1	50-250	0.7	20	0.5	3.0	1.40:1	QE-07-*
5:1	60-300	0.7	20	0.5	3.0	1.40:1	QE-08-*
5:1	70-350	0.7	20	0.5	3.0	1.40:1	QE-09-*
16:1	2-32	0.8	23	0.8	3.0	1.40:1	QE-10-442
60:1	0.5-30	1.0	20	0.8	3.0	1.40:1	QE-11-442
40:1	1-40	0.8	23	0.8	3.0	1.40:1	QE-12-442
40:1	2-80	0.8	23	0.8	3.0	1.40:1	QE-13-442
125:1	2-250	1.5	20	1.0	5.0	1.50:1	QE-14-442
100:1	5-500	3.0	15	1.5	8.0	1.50:1	QE-15-442
10:1	10-100	1.5	20	1.5	3.0	1.40:1	QE-16-E
10:1	5-50	1.5	20	1.2	3.0	1.30:1	QE-17-E
5:1	100-500	1.2	20	0.8	3.0	1.30:1	QE-18-E

Hybrids
90° & 180°

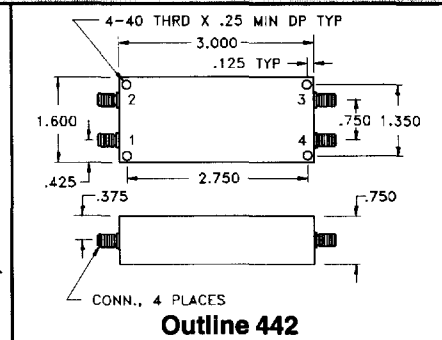
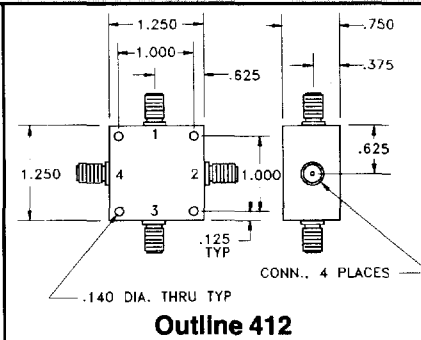
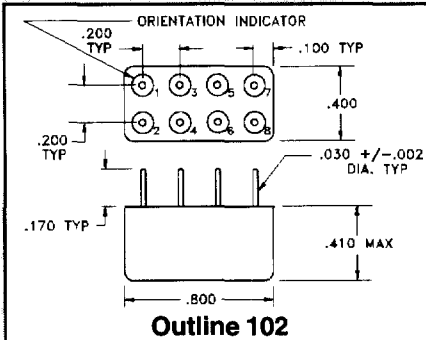
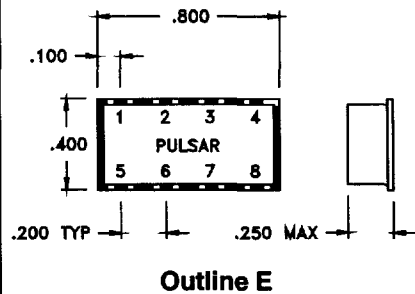
* Available in outline # 102

* Available in outline # 412 & 442 - SMA female connectors standard, refer to page 98 for more information.

Notes: Power rating 1 watt max. for load VSWR better than 1.20:1.
Higher power models available, consult factory.

Port Configuration

Outline	Input	90° Output	0° Output	Isolated	Ground
102	1	8	7	2	3-6
412	1	3	4	2	Housing
442	1	3	4	2	Housing
E	5	4	8	1	All Others



48 Industrial West • Clifton, NJ 07012 • Tel: (973) 779-6262 • Fax: (973) 779-2727
Web Site: www.pulsarmicrowave.com • E-Mail: sales@pulsarmicrowave.com