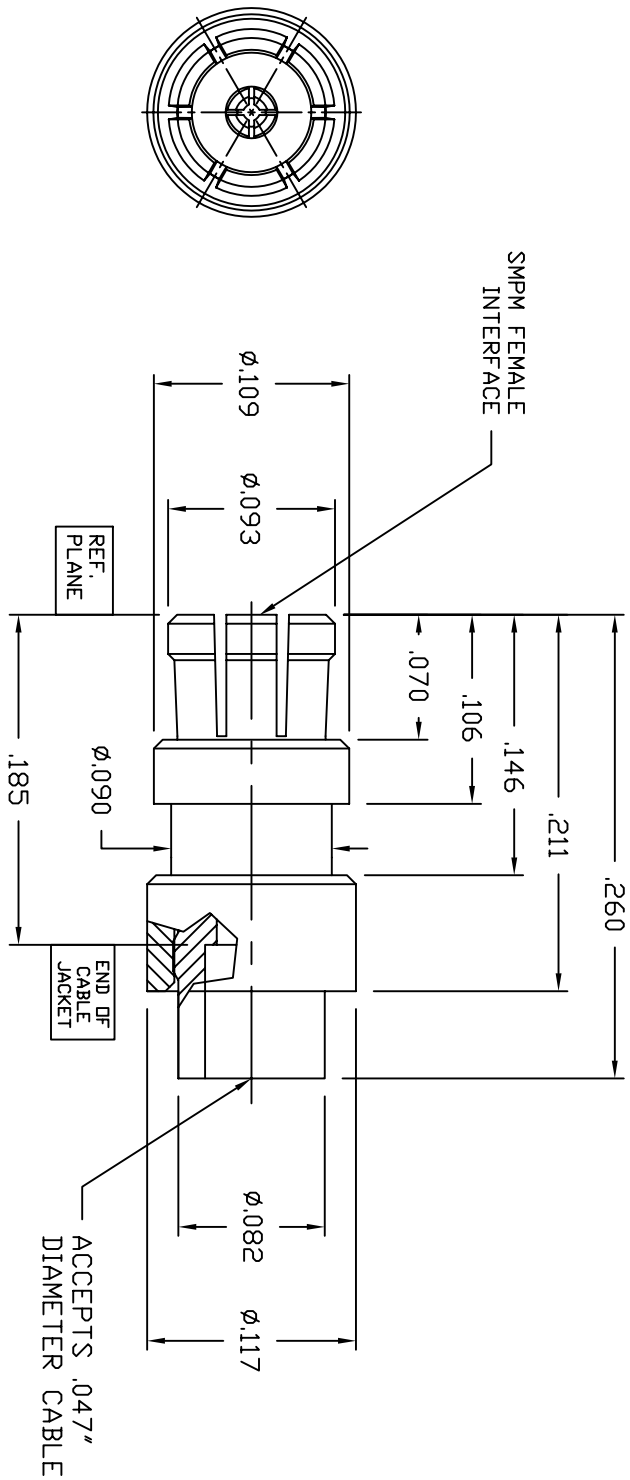


CONNECTOR P/N MA1-MFCS-001

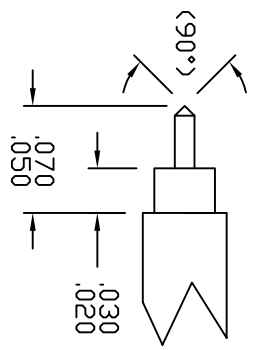
COMPONENT	MATERIAL	FINISH
HOUSING AND CONTACT	BeCu PER ASTM B 196 AND/OR ASTM B 197 AND UNS #C17300 OR UNS #C172000	GOLD PLATE PER ASTM B 488, TYPE 1, GRADE G-500050 DD .000100 THICK OVER NICKEL PER AMS 24290 OR AMS 2404 000050 TD .000150 THICK.
INSULATOR(S)	PTFE(FLDND) PER ASTM D 1710 AND ASTM D 1457	N/A

ECO NO.		DESCRIPTION		DATE		RELEASED	
A		INITIAL RELEASE					

REV. NO. 01-MA1-MFCS-001



CABLE TRIM  
DETAIL



UNLESS OTHERWISE SPECIFIED, DIMENSIONS ARE IN INCHES. TOLERANCES ON:		PRODUCT CODE		TITLE	
DECIMALS	ANGULAR	DATE	DATE	DATE	DATE
.XX ± .005	± .1/32	5/20/02	5/20/02	5/20/02	5/20/02
DO NOT SCALE DRAWING		APPROVED	CAD FILENAME	SIZE	DWG. NO.
		DME	CADFILENAME	C 67720	01-MA1-MFCS-001
THIS DRAWING AND THE DATA DISCLOSED HEREIN IS CONFIDENTIAL AND PROPRIETARY TO CRISTEK. IT IS TO BE KEPT IN STRICTLY CONFIDENTIAL AND NOT TO BE DISCLOSED IN WHOLE OR IN PART TO ANYONE WITHOUT THE WRITTEN PERMISSION OF CRISTEK NETWORKS.		THIRD ANGLE PROJECTION	SCALE	NONE	SHEET 1 OF 1

**CRISTEK**  
1301 S. LEVY STREET  
ANN ARBOR, MI 48106  
(734) 618-2900

SMPM FEMALE  
STRAIGHT TO .047 CABLE