

## 2, 5, & 10 Watts Power - Wireless System Performance

- 2, 5, and 10 Watt Model selection
- Broad Frequency Band Coverage
- Low VSWR - 50 Ohm - High Performance.
- Rugged Stainless Steel Interface Construction

Midwest Microwave's SMA series of medium power coaxial Terminations provide temperature stable, ruggedly built, precision performance in light weight reasonably sized packages using stainless steel connectors and black anodized finned aluminum housings. Input Power levels of 2, 5, and 10 Watts are offered with low VSWR performance.



### 2 Watts - DC - 8 GHz

**Impedance:** 50 Ohms

**Frequency:** DC - 8.0 GHz

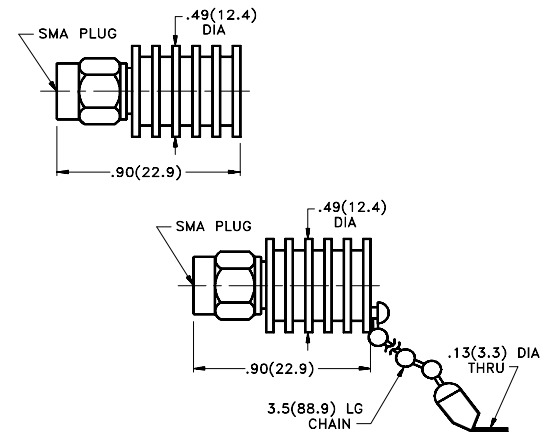
**VSWR:** 1.05 + 0.008 f (GHz)

**Power:** 2 Watts average @ +25 °C derated linearly to 0.5 Watts @ +125 °C

**Peak Power:** 500 Watts

**Operating Temperature Range:** -54 °C to +125 °C

DC - 8.0 GHz	2008 Series	Model Numbers
Male Plug		Male Plug with Chain
TRM-2008-M0-SMA-07		TRM-2008-MC-SMA-07



### 5 Watts - DC - 8 GHz

**Impedance:** 50 Ohms

**Frequency:** DC - 8.0 GHz

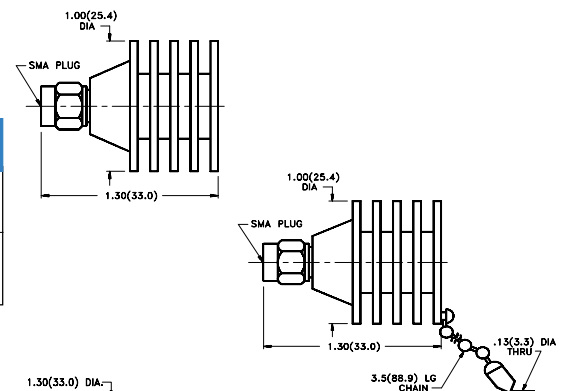
**VSWR:** 1.05 + 0.01 f (GHz)

**Power:** 5 Watts average @ +25 °C derated linearly to 0.5 Watts @ +125 °C

**Peak Power:** 1 Kilowatt

**Operating Temperature Range:** -54 °C to +125 °C

DC - 8.0 GHz	2009 Series	Model Numbers
Male Plug		Male Plug with Chain
TRM-2009-M0-SMA-07		TRM-2009-MC-SMA-07



### 10 Watts - DC - 8 GHz

**Impedance:** 50 Ohms

**Frequency:** DC - 8.0 GHz

**VSWR:** 1.05 + 0.01 f (GHz)

**Power:** 10 Watts average @ +25 °C derated linearly to 1.0 Watts @ +125 °C

**Peak Power:** 1 Kilowatt

**Operating Temperature Range:** -54 °C to +125 °C

DC - 8.0 GHz	2003 Series	Model Numbers
Male Plug		Male Plug with Chain
TRM-2003-M0-SMA-07		TRM-2003-MC-SMA-07

