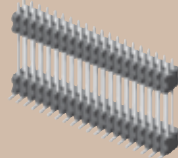
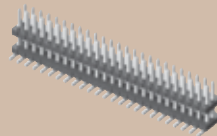


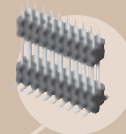


FW-25-03-G-D-163-120



FW-20-05-G-D-500-075

FW-10-05-G-D-400-090-A



Surface  
**SMT**  
Mount

# .050" BOARD STACKER FW SERIES

## SPECIFICATIONS

For complete specifications and recommended PCB layouts see [www.samtec.com?FW](http://www.samtec.com?FW)

### Insulator Material:

Black Liquid Crystal Polymer

### Terminal Material:

Phosphor Bronze

### Plating:

Sn or Au over 50µ" (1,27µm) Ni

### Current Rating:

1.75A @ 80°C ambient

### Operating Temp Range:

-55°C to +125°C

### RoHS Compliant:

Yes

### Processing:

#### Max Processing Temp:

230°C for 60 seconds, or 260°C for 20 seconds 3x

#### Lead-Free Solderable:

Yes

#### SMT Lead Coplanarity:

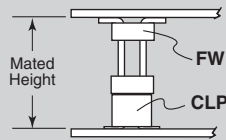
(0,10mm) .004" max (02-30)

(0,15mm) .006" max (31-50)



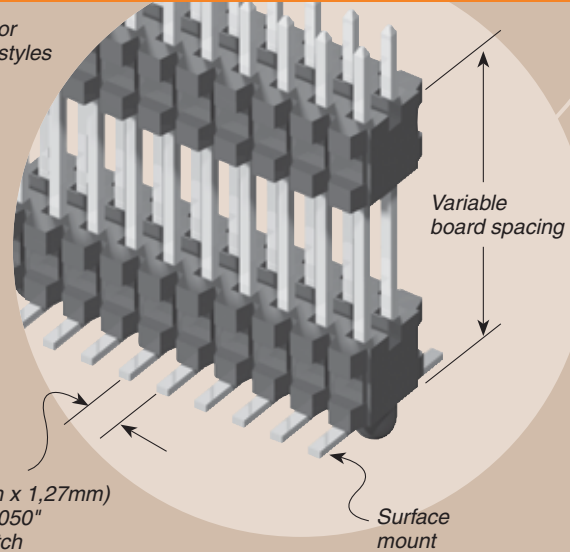
Mates with:  
CLP, FFSD, FLE

## APPLICATIONS



Lead Style	CLP	Mated Height
FW		
FW-XX-03-X-X-233-065	-02	(8,13) .320
FW-XX-03-X-X-303-065		(9,91) .390

Low profile or skyscraper styles



(1,27mm x 1,27mm)  
.050" x .050"  
micro pitch

FW	NO. PINS PER ROW	LEAD STYLE	PLATING OPTION	D	STACKER HEIGHT	POST HEIGHT	OPTION									
	02 thru 50	Specify LEAD STYLE from chart	<p><b>-G</b> = 10µ" (0,25µm) Gold on post, Gold flash on tail</p> <p><b>-L</b> = 10µ" (0,25µm) Gold on post, Matte Tin on tail</p> <p><b>-F</b> = Gold flash on post, Matte Tin on tail</p>		<p><b>"XXX"</b> = Stacker Height (in inches) Example: -250 = (6,35mm) .250"</p>	<p><b>"XXX"</b> = Post Height (in inches) (1,65mm) .065" minimum Example: -065 = (1,65mm) .065"</p>	<p><b>-ES</b> = End Shroud (-075 post height only. Mate only with CLP) (5,46mm) .215" to (15,49mm) .610" stacker height only 9 pins/row min.</p> <p><b>-EP</b> = End Shroud with Guide Post (-075 post height only. Mate only with CLP.) (5,46mm) .215" to (15,49mm) .610" stacker height only 9 pins/row min.</p> <p><b>-A</b> = Alignment Pin (3 positions min.) (5,46mm) .215" to (15,75mm) .620" stacker height only</p> <p><b>-P</b> = Pick &amp; Place Pad (5 positions min.)</p> <p><b>-TR</b> = Tape &amp; Reel (Post+Stacker Height = (17,46mm) .6875 max.)</p>									
<table border="1"> <thead> <tr> <th>LEAD STYLE</th> <th>STACKER HEIGHT</th> <th>STACKER + POST</th> </tr> </thead> <tbody> <tr> <td>-03</td> <td>(5,46) .215 to (8,51) .335</td> <td>(7,11) .280 to (10,16) .400</td> </tr> <tr> <td>-05</td> <td>(8,64) .340 to (15,49) .610</td> <td>(10,29) .405 to (17,15) .675</td> </tr> </tbody> </table>								LEAD STYLE	STACKER HEIGHT	STACKER + POST	-03	(5,46) .215 to (8,51) .335	(7,11) .280 to (10,16) .400	-05	(8,64) .340 to (15,49) .610	(10,29) .405 to (17,15) .675
LEAD STYLE	STACKER HEIGHT	STACKER + POST														
-03	(5,46) .215 to (8,51) .335	(7,11) .280 to (10,16) .400														
-05	(8,64) .340 to (15,49) .610	(10,29) .405 to (17,15) .675														

**TAPE & REEL AVAILABILITY**

No tooling charges.  
Minimum order is the lesser of a full reel quantity or 125 pieces.  
Order any quantity above minimum.  
In-house design, manufacture.  
Quick turn-around.

Call Samtec for specifications and ordering information.

Note: This Series is non-standard, non-returnable.

Due to technical progress, all designs, specifications and components are subject to change without notice.

[WWW.SAMTEC.COM](http://WWW.SAMTEC.COM)